



ORIGINAL ARTICLE

# Influence of EPICardial adipose tissue in HEART diseases (EPICHEART) study: Protocol for a translational study in coronary atherosclerosis



Jennifer Mancio<sup>a,b,\*</sup>, António S. Barros<sup>a</sup>, Glória Conceição<sup>a</sup>, Cátia Santa<sup>c</sup>,  
Guilherme Pessoa-Amorim<sup>a</sup>, Carla Bartosch<sup>d</sup>, Mariana Fraga-Marques<sup>a</sup>,  
Wilson Ferreira<sup>b</sup>, Mónica Carvalho<sup>b</sup>, Nuno Ferreira<sup>b</sup>, Luís Vouga<sup>e</sup>,  
Isabel M. Miranda<sup>a</sup>, Rui Vitorino<sup>a</sup>, Ricardo Fontes-Carvalho<sup>a,b</sup>, Bruno Manadas<sup>c</sup>,  
Inês Falcão-Pires<sup>a</sup>, Vasco Gama Ribeiro<sup>b</sup>, Adelino Leite-Moreira<sup>a,f</sup>, Nuno Bettencourt<sup>a</sup>

<sup>a</sup> Department of Surgery and Physiology, Cardiovascular Research Unit (UnIC), Faculty of Medicine, University of Porto, Portugal

<sup>b</sup> Department of Cardiology, Centro Hospitalar de Vila Nova de Gaia, Portugal

<sup>c</sup> CNC – Center for Neuroscience and Cell Biology, University of Coimbra, Coimbra, Portugal

<sup>d</sup> Department of Pathology, Portuguese Oncology Institute of Porto, Porto, Portugal

<sup>e</sup> Department of Cardiothoracic Surgery, Centro Hospitalar de Vila Nova de Gaia, Portugal

<sup>f</sup> Cardiothoracic Surgery, Centro Hospitalar de Sao João, Portugal

Received 13 October 2019; accepted 2 March 2020

Available online 7 November 2020

## KEYWORDS

Coronary atherosclerosis;  
Epicardial adipose tissue;  
Computed tomography;  
Proteomics;  
Mass spectrometry;  
EPICHEART study

## Abstract

**Introduction:** Accumulation of epicardial adipose tissue (EAT) is associated with coronary artery disease (CAD) and increased risk of coronary events in asymptomatic subjects and low-risk patients, suggesting that EAT promotes atherosclerosis in its early stage. Recent studies have shown that the presence of CAD affects the properties of adjacent EAT, leading to dynamic changes in the molecular players involved in the interplay between EAT and the coronary arteries over the history of the disease. The role of EAT in late-stage CAD has not been investigated.

**Objectives:** In a comparative analysis with mediastinal and subcutaneous adipose tissue, we aim to investigate whether the volume of EAT assessed by computed tomography and its proteome assessed by SWATH-MS mass spectrometry are associated with late stages of CAD in an elderly cohort of severe aortic stenosis patients.

**Methods:** The EPICHEART study (NCT03280433) is a prospective study enrolling patients with severe degenerative aortic stenosis referred for elective aortic valve replacement, whose protocol includes preoperative clinical, nutritional, echocardiographic, cardiac computed

\* Corresponding author.

E-mail address: [up200104593@med.up.pt](mailto:up200104593@med.up.pt) (J. Mancio).

**PALAVRAS-CHAVE**

Aterosclerose coronária;  
 Tecido adiposo epicárdico;  
 Tomografia computadorizada;  
 Proteomics;  
 Espectrometria de massa;  
 Estudo EPICHEART

tomography and invasive coronary angiographic assessments. During cardiac surgery, samples of EAT and mediastinal and subcutaneous thoracic adipose tissue are collected for proteomics analysis by SWATH-MS. In addition, pericardial fluid and peripheral and coronary sinus blood samples are collected to identify circulating and local adipose tissue-derived biomarkers of CAD.

**Conclusion:** We designed a translational study to explore the association of EAT quantity and quality with advanced CAD. We expect to identify new biochemical factors and biomarkers in the crosstalk between EAT and the coronary arteries that are involved in the pathogenesis of late coronary atherosclerosis, especially coronary calcification, which might be translated into new therapeutic targets and imaging tools by biomedical engineering.

© 2020 Published by Elsevier España, S.L.U. on behalf of Sociedade Portuguesa de Cardiologia. This is an open access article under the CC BY-NC-ND license (<http://creativecommons.org/licenses/by-nc-nd/4.0/>).

### Influência do Tecido Adiposo Epicárdico nas Doenças Cardíacas (EPICHEART): protocolo para um estudo de translação em aterosclerose coronário

**Resumo**

**Introdução:** Acumulação de tecido adiposo epicárdico (TAE) tem sido associado a doença coronária aterosclerótica (DC) e aumento do risco de eventos coronários em indivíduos assintomáticos e doentes de baixo risco, sugerindo que o TAE pode promover fases precoces da DC. Estudos recentes mostraram que a presença de DC afeta as características do TAE adjacente levando a modificações dinâmicas nos mediadores envolvidos na comunicação entre o TAE e as artérias coronárias ao longo da história da DC. O papel do TAE nas fases avançadas da aterosclerose coronária não foi investigado.

**Objetivos:** Através de análise comparativa com o tecido adiposo mediastínico e subcutâneo, pretendemos investigar se o volume do TAE, avaliado por tomografia computadorizada (TC), e o seu proteoma, avaliado por espectrometria de massa técnica de SWATH, estão associados a estádios avançados da DC numa coorte de estenose aórtica grave.

**Métodos:** O estudo EPICHEART (NCT03280433) é um estudo prospetivo que inclui doentes com estenose aórtica grave referenciados para substituição eletiva da válvula aórtica, cujo protocolo envolve avaliação pré-operatória clínica, nutricional, ecocardiográfica, por TC e angiografia coronária invasiva. Durante a cirurgia cardíaca, colhemos amostras de tecido adiposo epicárdico, mediastínico e subcutâneo para análise do seu proteoma por espectrometria de massa técnica de SWATH. Adicionalmente, colhemos líquido pericárdico, sangue venoso periférico e do seio coronário para investigar mediadores de DC derivados do TAE na circulação sistémica e local.

**Conclusão:** Desenhámos um estudo de translação para explorar a associação da quantidade e qualidade do TAE com a DC tardia. Esperamos identificar mediadores da comunicação recíproca entre o TAE e as artérias coronárias que estão envolvidos na patogénese das fases avançadas da DC, especialmente, calcificação coronária, os quais podem servir como novos alvos terapêuticos e soluções de engenharia biomédica para visualização da DC.

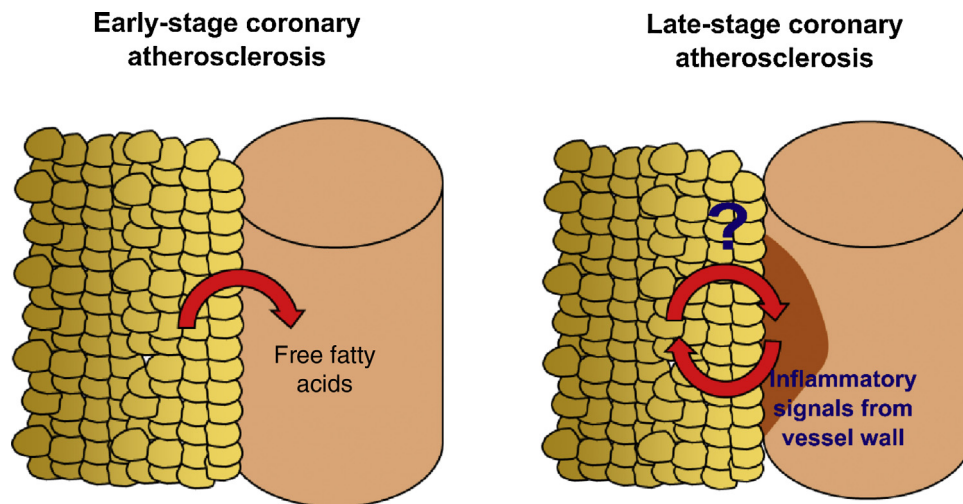
© 2020 Publicado por Elsevier España, S.L.U. em nome de Sociedade Portuguesa de Cardiologia. Este é um artigo Open Access sob uma licença CC BY-NC-ND (<http://creativecommons.org/licenses/by-nc-nd/4.0/>).

**Introduction**

More than 25 years have passed since Agatston et al.<sup>1</sup> introduced coronary artery calcification (CAC) quantification on computed tomography (CT) as a marker of subclinical coronary artery disease (CAD) and predictor of coronary events, independently of standard risk factors or risk scores.<sup>2</sup> Recently, epicardial adipose tissue (EAT) has emerged as a new marker of CAD that complements the prognostic information provided by the Agatston CAC score and increases the

predictive value of cardiac CT without additional radiation exposure or contrast administration.<sup>3-5</sup>

EAT is the visceral fat of the heart, located between the visceral pericardium and the myocardium. In physiological conditions, EAT exerts metabolic (source of free fatty acids), thermogenic (similar to brown fat) and mechanical cardio-protective properties.<sup>6</sup> However, dysfunctional EAT has been associated with coronary atherosclerosis, atrial fibrillation and diastolic dysfunction, due to a shift in its secretome profile. In patients with CAD, compared with subcutaneous



**Figure 1** Study hypothesis. Accumulation of epicardial adipose tissue (EAT) is associated with non-calcified, vulnerable coronary artery disease (CAD) and increased risk of coronary events in asymptomatic subjects and low-risk patients. Recent studies have shown that the presence of CAD affects the properties of the adjacent EAT, and that the molecular players involved in the interplay between EAT and the coronary arteries may undergo dynamic changes over the history of the disease. We designed the EPICHEART study (NCT03280433) to investigate how EAT volume and proteome are linked to the presence of coronary stenosis and coronary calcification in an elderly cohort of severe aortic stenosis patients who underwent elective aortic valve replacement.

adipose tissue, EAT presented higher expression of proinflammatory, pro-oxidant, and angiogenic regulatory genes, and greater infiltration by immune cells, particularly proinflammatory M1 macrophages.<sup>7-9</sup>

EAT can be quantified in clinical practice by non-invasive imaging techniques.<sup>10,11</sup> In a contemporary systematic review and meta-analysis,<sup>12</sup> we demonstrated that EAT volume assessed by CT is associated with the presence of coronary stenosis (lumen reduction  $\geq 50\%$  for obstructive stenosis and  $\geq 70\%$  for significant stenosis), myocardial ischemia and incident coronary events, independently of traditional cardiovascular risk factors. Most of the studies analyzed, however, were based on community-derived cohorts<sup>4,13-19</sup> composed of subjects at very low cardiovascular risk. Similarly, Mahabadi et al.<sup>20</sup> showed that EAT is associated with CAC progression, particularly in young subjects, suggesting that EAT has a role in the early stages of coronary atherosclerosis. How EAT volume is linked to CAD in high-risk patients and what EAT-derived molecular players are involved in the pathophysiology of advanced stages of atherosclerosis are still unknown (Figure 1).

### Study objectives

In a high-risk cohort of patients with symptomatic severe aortic stenosis (AS) undergoing surgical aortic valve replacement, we aim to determine the association between the quantity and quality of EAT and coronary stenosis and calcification, taking as comparison the mediastinal and subcutaneous thoracic fat depots. Specifically, our aims are to investigate the association of EAT volume assessed by CT with the extent, distribution and complexity of coronary stenosis assessed by invasive coronary angiography, to compare the proteomics of EAT with that of mediastinal and subcutaneous adipose tissue obtained by sequential windowed acquisition of all theoretical fragment

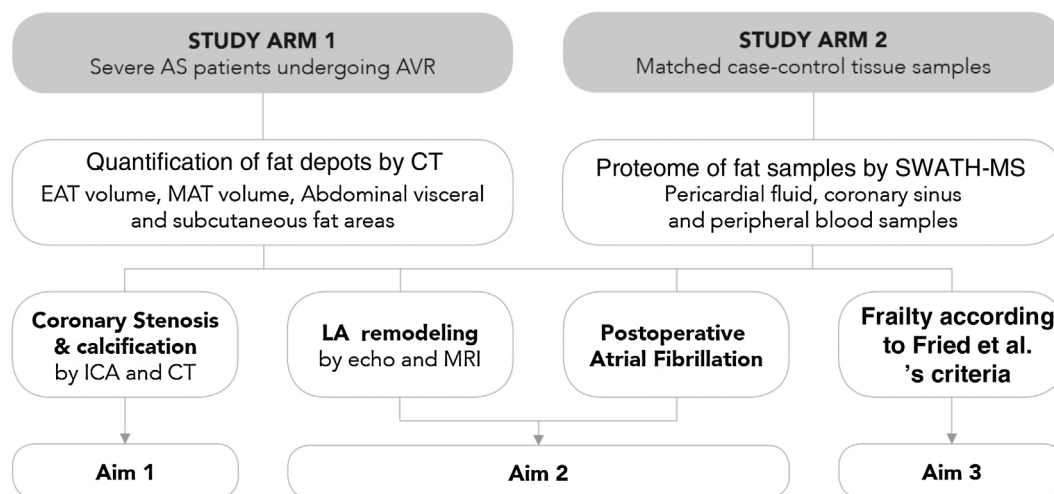
ion mass spectra (SWATH-MS) mass spectrometry, and to identify the EAT-derived proteins linked to advanced coronary atherosclerosis.

## Methods

### Study population

The Influence of EPICardial Adipose Tissue in HEART diseases (EPICHEART) study is a translational study designed to investigate the association between EAT and CAD, left atrial remodeling, postoperative atrial fibrillation, and frailty syndrome in patients with symptomatic severe AS. The study is composed of two arms: Arm 1 includes patients with severe AS referred for aortic valve replacement in whom we assessed clinical associations between EAT volume and CAD, and Arm 2 includes adipose tissue samples collected during cardiac surgery from a subset of Arm 1 patients (Figure 2).

Patients with symptomatic severe AS (defined as aortic valve area of  $< 1 \text{ cm}^2$  or  $0.6 \text{ cm}^2/\text{m}^2$  by transthoracic echocardiography) referred for aortic valve replacement were included. Patients have been recruited from the cardiology and cardiothoracic surgery departments at our institution since October 2014. Exclusion criteria are acute coronary syndrome in the previous three months, history of persistent or permanent atrial fibrillation or flutter, coexisting moderate to severe aortic valve regurgitation or moderate to severe mitral valve disease, bicuspid aortic valve, left ventricular dilatation (end-diastolic volume index  $> 75 \text{ ml}/\text{m}^2$ ), left ventricular ejection fraction  $< 55\%$ , stage 3-5 chronic renal failure (defined as glomerular filtration rate  $< 30 \text{ ml}/\text{min}/1.73 \text{ m}^2$  estimated by the Cockcroft-Gault formula and adjusted for body surface area<sup>21</sup>), moderate to severe chronic obstructive pulmonary disease (defined as forced expiratory volume in one second  $< 50\%$  according to



**Figure 2** EPICHEART study aims. The EPICHEART study is a prospective translational study enrolling severe aortic stenosis (AS) patients referred for aortic valve replacement, in which we will provide clinical associations between epicardial adipose tissue (EAT) volume assessed by computed tomography and different outcomes of heart disease, namely coronary artery disease, left atrial remodeling and incidence of postoperative atrial fibrillation, and frailty syndrome in severe AS patients referred to aortic valve replacement (Arm 1). In addition, the proteomic profile of EAT and mediastinal and subcutaneous thoracic fat samples collected from matched case-control pairs will be investigated and compared (Arm 2). In this paper, we focused on the methodology employed to address Aim 1. AVR: aortic valve replacement; CAD: coronary artery disease; CT: computed tomography; EAT: epicardial adipose tissue; echo: echocardiography; ICA: invasive coronary angiography; LA: left atrial; MAT: mediastinal adipose tissue; MRI: magnetic resonance imaging; SWATH-MS: sequential windowed acquisition of all theoretical fragment ion mass spectra mass spectrometry.

**Table 1** EPICHEART study population: inclusion and exclusion criteria.

#### Inclusion criterion

Symptomatic severe AS (aortic valve area  $<1 \text{ cm}^2$  or  $0.6 \text{ cm}^2/\text{m}^2$  by transthoracic echocardiography)

#### Exclusion criteria

Acute coronary syndrome in the previous 3 months  
History of persistent or permanent atrial fibrillation or flutter  
Coexisting moderate to severe aortic valve regurgitation or moderate to severe mitral valve disease  
Bicuspid aortic valve  
LV dilatation (end-diastolic volume index  $>75 \text{ ml}/\text{m}^2$ )  
LVEF  $<55\%$   
Stage 3–5 CKD  
Moderate to severe COPD  
Active malignancy

AS: aortic stenosis; CKD: chronic kidney disease; COPD: chronic obstructive pulmonary disease; LV: left ventricular; LVEF: left ventricular ejection fraction.

the 2011 Global Initiative for Chronic Obstructive Pulmonary Disease guidelines<sup>22</sup>), or active malignancy (no evidence of recurrence and no longer receiving active treatment<sup>23</sup>) (Table 1).

### Study protocol

The study protocol includes patient screening, preoperative assessment, intraoperative sample collection, and in-hospital and six-month postoperative follow-up (Figure 3).

### Preoperative assessment

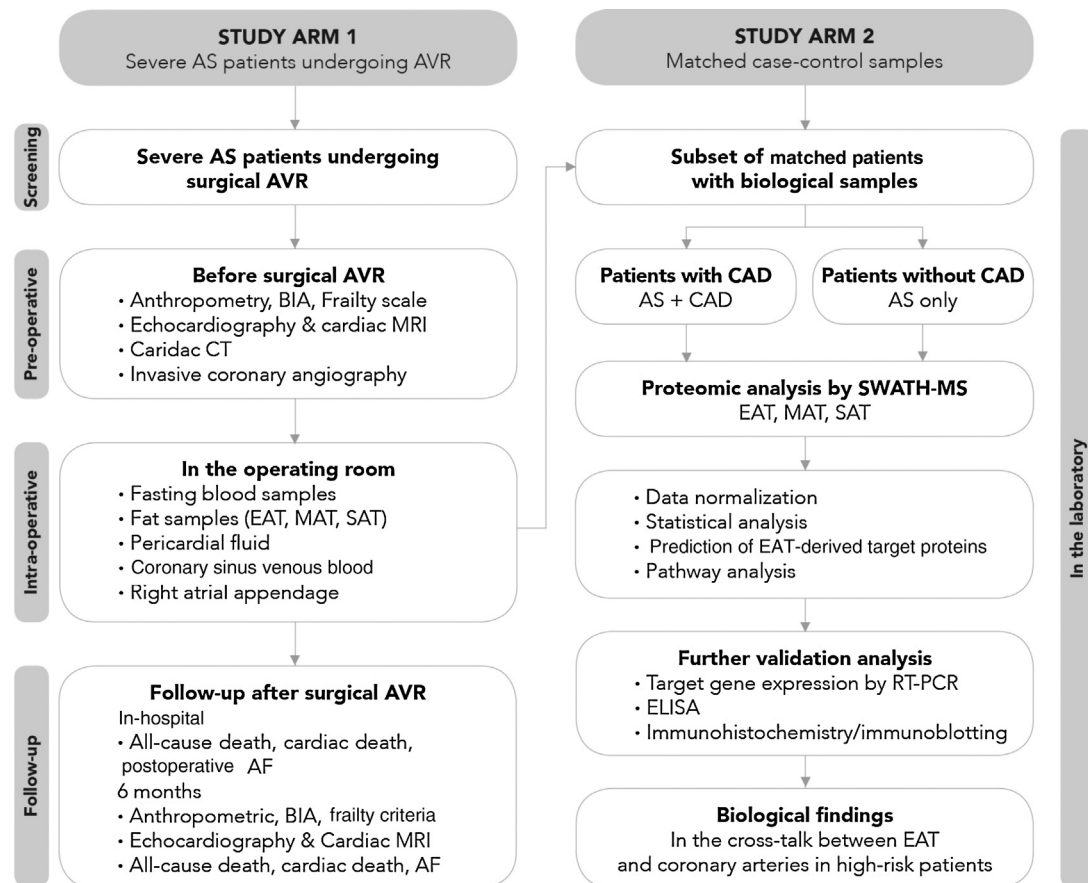
All included patients undergo a prespecified examination including clinical, anthropometric and bioelectrical impedance analyses, echocardiographic, cardiac CT and invasive coronary angiography assessments. A subset of patients undergoes cardiac magnetic resonance imaging. Fasting peripheral blood samples are collected on the morning of the surgery.

### Intraoperative assessment

During surgery and before the beginning of cardiopulmonary bypass, samples of approximately 0.5–10 g are collected from three different adipose tissue depots, namely EAT (taken from the anterior surface of the heart), mediastinal adipose tissue (MAT) (collected outside the pericardial cavity) and thoracic subcutaneous adipose tissue (taken from the incision at the chest wall). These specimens are rinsed with phosphate-buffered saline and divided into two portions: one imbedded in optimal cutting temperature compound and snap-frozen in liquid nitrogen at  $-80^\circ\text{C}$ , and the other fixed in formaldehyde for histologic analysis. In addition to fat samples, samples of pericardial fluid, coronary sinus venous blood and the right atrial appendage are also collected. The right atrial appendage sample is collected immediately after cannulation of the right atrium.

### In-hospital assessment

In-hospital death and postoperative atrial fibrillation are recorded at six months after aortic valve replacement.



**Figure 3** Study flowchart. Before surgery, beyond a detailed demographic, anthropometric and clinical characterization, patients' body composition will be determined by bioelectrical impedance analysis and the presence of frailty assessed using Fried et al.'s criteria; cardiac computed tomography will be performed to quantify fat depots including epicardial adipose tissue (EAT) volume and total thoracic fat and abdominal subcutaneous or visceral fat area, and coronary artery calcification through Agatston calcium score; the degree, distribution and complexity of coronary artery disease (CAD) will be assessed invasively by cardiac catheterization; and cardiac structure and function will be characterized in detail by both transthoracic echocardiography and cardiac magnetic resonance imaging. On the morning of surgery, fasting peripheral venous blood samples will be obtained and during surgery, biopsies will be taken from three fat depots (EAT, mediastinal and subcutaneous thoracic fat) and the right atrial appendage; cardiac fluids (pericardial fluid and coronary sinus venous blood) will be collected. Follow-up will be performed during hospitalization until hospital discharge and at six months after aortic valve replacement to assess the incidence of postoperative atrial fibrillation, cardiac remodeling and frailty change following cardiac surgery. The proteomic profile of the three fat samples (EAT, mediastinal and subcutaneous adipose tissue) will be investigated using SWATH-MS. After data normalization, a comparative analysis will be performed between the EAT proteome of patients with CAD and their matched controls without CAD, and between EAT, mediastinal adipose tissue and subcutaneous thoracic fat. Further validation of proteomic findings will be needed via quantitative polymerase chain reaction and Western blotting (and/or immunohistochemistry), and subsequently the pericardial fluid and coronary sinus blood (intracardiac local levels) and peripheral venous blood (systemic circulating levels) will be investigated by enzyme linked-immunosorbent assay in order to find potential target proteins secreted by EAT involved in the pathogenesis of late CAD. AF: atrial fibrillation; AS: aortic stenosis; AVR: aortic valve replacement; BIA: bioelectrical impedance analysis; CAD: coronary artery disease; CT: computed tomography; EAT: epicardial adipose tissue; ELISA: enzyme linked-immunosorbent assay; ICA: invasive coronary angiography; MAT: mediastinal adipose tissue; MRI: magnetic resonance imaging; PCR: polymerase chain reaction; SAT: subcutaneous adipose tissue; SWATH-MS: sequential windowed acquisition of all theoretical fragment ion mass spectra mass spectrometry.

The impact of surgery on body fat composition, recovery from frailty criteria, and cardiac remodeling assessed by transthoracic echocardiography and cardiac magnetic resonance imaging are analyzed.

The study protocol conforms to the ethical guidelines of the 1975 Declaration of Helsinki and was approved by

the Portuguese Data Protection Authority (CNPD) and by the Institutional Ethics Committee of Centro Hospitalar de Vila Nova de Gaia/Espinho. The study is registered at ClinicalTrials.gov (NCT03280433).

In this article, we focus on the methods used to study the relationship between EAT and coronary atherosclerosis.



**Table 2** EPICHEART study variables.

<i>Coronary artery disease</i>	
Cardiac computed tomography	
Coronary artery calcification (coronary calcium score)	
<i>Invasive coronary angiography</i>	
Coronary artery stenosis (extent of CAD: obstructive stenosis, significant stenosis; distribution of CAD: number of diseased vessels, and complexity of CAD by SYNTAX score)	
<i>Body fat quantity</i>	
<i>Computed tomography</i>	
Thoracic fat: EAT volume, mediastinal fat volume	
Abdominal fat: total, visceral and subcutaneous abdominal fat areas	
<i>Bioelectrical impedance analysis</i>	
Fat mass, fat mass percentage	
Free fat mass, free fat mass percentage	
<i>Anthropometry</i>	
Weight, height, waist circumference, hip circumference	
<i>Body fat proteome</i>	
SWATH-MS	
<i>Further validation by qPCR and western blotting (and/or immunohistochemistry)</i>	
EAT, mediastinal fat, subcutaneous thoracic fat	
<i>Circulating blood</i>	
Levels of proteins with different expression between groups	
<i>Coronary sinus blood</i>	
Levels of proteins with different expression between groups	
<i>Pericardial fluid</i>	
Levels of proteins with different expression between groups	

CAD: coronary artery disease; EAT: epicardial adipose tissue; MS: mass spectrometry; qPCR: quantitative polymerase chain reaction; SWATH-MS: sequential windowed acquisition of all theoretical fragment ion mass spectra mass spectrometry.

The variables are described in [Table 2](#); for further details on the EPICHEART study's full endpoints see [Supplementary Table 1](#).

## Assessment of coronary artery disease

### Coronary artery stenosis

The extent, distribution and complexity of coronary stenosis are characterized by invasive coronary angiography. An experienced invasive cardiologist (15 years performing and interpreting invasive coronary angiography) classifies the most severe stenosis within each coronary segment visually, and the anatomical complexity of CAD by the validated SYNTAX score. According to the standard definitions of flow-limiting stenosis, each patient is categorized according to (1) extent of CAD, classified by the degree of stenosis in obstructive CAD (i.e.  $\geq 50\%$  stenosis) and significant CAD (i.e.  $\geq 50\%$  stenosis in the left main coronary artery, and/or  $\geq 70\%$  or greater in any other coronary artery); (2) distribution of CAD, which is an ordered variable classified by CAD severity as one-, two- or three-vessel disease; and (3) complexity of

CAD, which is a categorical variable defined as SYNTAX score  $\geq 22$ .

### Coronary artery calcification

All patients undergo non-contrast cardiac multidetector CT (SOMATOM Sensation Cardiac 64, Siemens, Forchheim, Germany) 1-3 months before cardiac surgery for CAC scoring and analysis of fat depots. A CAC scan is performed using a prospectively electrocardiogram-triggered scanning protocol with the following parameters: tube voltage 120 kV, tube current 190 mA, gantry rotation 330 ms, collimation 24 mm $\times$ 1.2 mm, pitch 0.2, and image reconstruction 3 mm. CAC is reported as the Agatston score and calculated using a detection threshold of 130 Hounsfield units (HU) with semi-automated software (syngo Calcium Scoring, Siemens Medical Solutions). In addition, an abdominal single-slice acquisition is obtained between L4 and L5-S1 with the following radiographic factors: 120 kV and 216 mA with 5 mm thickness, resulting in an estimated radiation exposure of 0.06 mSv.

## Adipose tissue assessment

### Adipose tissue quantity

Fat depots including EAT, MAT, and abdominal visceral and subcutaneous adipose tissue are quantified by CT (syngo Volume, Siemens Medical Solutions), according to the predefined image display setting (window of -150 to -50 HU) to identify voxels that correspond to adipose tissue. To measure EAT volume, the pericardium is manually traced every 10 mm from the right pulmonary artery to the diaphragm to determine the region of interest. MAT is derived by the difference between total intrathoracic fat (defined as all fat located inside the thoracic cavity from first costal arch to diaphragm and from aorta to sternum) and EAT volumes. Total abdominal fat area is calculated as the total adipose tissue in the examined abdominal slice, and visceral abdominal fat area as adipose tissue located inside the region of interest defined by delineating the abdominal wall muscular layer. Subcutaneous adipose tissue is obtained by subtracting visceral abdominal fat from total abdominal fat areas.

Intra- and inter-rater reliability for each fat measurement was evaluated in 55 random patients as described previously.<sup>24</sup>

### Adipose tissue quality

The three fat samples (EAT, MAT and subcutaneous thoracic adipose tissue) will be phenotyped by SWATH-MS study of their proteome. A comparative analysis of EAT proteomics between patients with CAD and their matched controls without CAD, and between EAT, MAT and subcutaneous thoracic fat, will then be performed. Differently regulated proteins will be identified between tissues in patients with and without CAD through robust multivariate models. Finally, proteomics findings will be validated by immunohistochemistry and by determining transcript levels in EAT samples, and their availability explored in peripheral blood and

pericardial fluid to unravel potential circulating or local biomarkers of CAD and CAC.

## Statistical plan

Previous studies investigating the association between EAT and CAD compared patients referred for coronary artery bypass grafting with those referred for valve replacement only (controls). Therefore, their control groups were very heterogeneous and differed from the CAD groups in factors other than CAD. In this study, we studied a homogenous cohort of symptomatic severe degenerative AS patients. Since AS shares the same pathophysiology as CAD and the prevalence of CAD in severe AS patients is about 50%,<sup>25</sup> the groups AS+CAD (diseased group) and AS only (control group) are expected to present a balanced distribution of traditional cardiovascular risk factors. In addition, adjusted regression models were used to eliminate confounding by standard cardiovascular risk factors and drugs when assessing the association between EAT volume and coronary stenosis or calcification (Arm 1). Orthogonal projection to latent structures-discriminant analysis<sup>26–28</sup> will be used to build models able to distinguish and interpret the observed differences between the three fat samples in the CAD and non-CAD groups (Arm 2). Partial least square regression will be used to study the multivariate correlations between EAT proteins and CAC score.

With regard to sample size calculation, as previously described, patients with  $\geq 50\%$  coronary stenosis are expected to have significantly higher EAT volume, with an estimated mean difference in EAT volume between patients with and without CAD of 17.33 ml.<sup>12</sup> Assuming a beta of 0.20 and an alpha of 5%, it was estimated that a minimum of 294 patients will be needed to detect differences in EAT volume between patients with and without obstructive CAD. Additionally, it was estimated that at least 260 patients are needed to detect differences in EAT volume between patients with and without coronary calcification (CAC score  $>0$ ), considering an overall mean difference in EAT volume of 19.15 ml, beta of 20% and alpha of 5%.

## Discussion

In a thoroughly phenotyped cohort of elderly patients with severe degenerative AS referred for aortic valve replacement, we aim to explore the association of EAT volume assessed by CT with the presence and severity of coronary stenosis and with coronary calcium score. Moreover, in a comparative analysis with mediastinal and subcutaneous thoracic adipose tissue, EAT will be phenotyped by the study of its proteomics using a highly sensitive mass spectrometry technique to identify EAT-derived proteins linked to the late stages of CAD.

### Factors that modulate the link between epicardial adipose tissue and coronary artery disease

Several factors may affect the crosstalk between EAT and the coronary arteries. Through a systematic review, we determined that the major factors of heterogeneity in the

association between EAT volume and CAD are the pre-test probability of CAD, obesity, gender, and ethnicity. Increased EAT volume assessed by CT was independently associated with CAD in very low-to-intermediate risk subjects, but in the CORE320 Multicenter study, in which a third of included patients had previous myocardial infarction, EAT volume did not differ between patients with and without coronary stenosis or myocardial ischemia, and there was no significant correlation with CAC score.<sup>29</sup> It has recently been discovered that, in the presence of coronary plaques, the release of inflammatory mediators and oxidation products from the diseased vessel wall modifies the phenotype of the adjacent EAT, affecting its morphology and adipokine secretome.<sup>30,31</sup> It was shown that coronary inflammation blocks adipocyte maturation, leading to smaller adipocytes with a lower lipid content, changes that may have an impact on the total volume of EAT. Moreover, in an elderly population with a high prevalence of cardiovascular risk factors, conventional cardiovascular drugs, such as statins,<sup>32</sup> oral antidiabetic agents,<sup>33</sup> and aspirin<sup>34</sup> also directly modulate the phenotype of visceral adipose tissue. Altogether this evidence suggests that the communication between EAT and the coronary vessel wall is reciprocal and leads to modifications at the morphological and functional level over the natural history of the disease. Consequently, the relationship between EAT and late CAD needs to be specifically addressed in a high-risk stable cohort, and both quantitative and qualitative aspects of fat biology should be explored to understand the role of EAT in advanced stages of coronary atherosclerosis.

### Quantity versus quality of epicardial adipose tissue

Although the volume, area and thickness of EAT on echocardiography, CT or cardiac magnetic resonance imaging are highly correlated with increased adipocyte metabolic activity and inflammatory cell infiltration, EAT quantity may not accurately reflect the phenotype of EAT. The phenotype ('quality') of EAT can only be investigated invasively through the study of its genome, transcriptome or proteome. Unlike the genome and transcriptome, the proteome is a direct measure of the determinants of cell phenotype, and can thus better elucidate the dynamic processes behind the manifestation and progression of disease.<sup>35</sup> Mass spectrometry is the method of choice in proteomics approaches and SWATH-MS is recognized as a high-speed and high-resolution mass spectrometry acquisition method that accurately performs relative quantification of proteins even in complex samples.<sup>36</sup> Furthermore, because little correlation has been found between EAT secretion and plasma adipocytokine levels, it is essential to investigate to what degree EAT-derived mediators are represented in cardiac fluids such as coronary sinus blood and pericardial fluid, to reveal molecular players involved in vasocrine and paracrine crosstalk between epicardial adipocytes and the coronary vessels.

## Conclusions

In this translational study, we investigate, for the first time in the same cohort, the quantitative and qualitative aspects of adipose tissue, and how they are linked to coronary

atherosclerosis in high-risk patients. In a thoroughly phenotyped clinical cohort of severe AS patients, we will provide statistically powered associations between EAT volume and coronary stenosis and coronary calcification. Furthermore, we will generate an EAT bioresource that will help to create a library of independent markers of EAT biology, enabling correlations to be established between the EAT phenotype, its volume on CT, and the presence of disease. The results of our study will pinpoint potential EAT-derived targets for novel local therapies to slow down the progression and promote the stability of atherosclerotic plaques, and for the discovery of new CAD imaging tools by biomedical engineering.

## Funding

J. Mancio is supported by the Fundação Portuguesa para a Ciência e Tecnologia (SFRH/BD/104369/2014) and by the Sociedade Portuguesa de Cardiologia (Bolsa de investigação João Porto). This article is a result of the DOCnet project (NORTE-01-0145-FEDER-000003), supported by Norte Portugal Regional Operational Programme (NORTE 2020), under the PORTUGAL 2020 Partnership Agreement, through the European Regional Development Fund.

## Conflicts of interest

The authors have no conflicts of interest to declare.

## Appendix A. Supplementary data

Supplementary material associated with this article can be found in the online version at [doi:10.1016/j.repc.2020.03.017](https://doi.org/10.1016/j.repc.2020.03.017).

## References

1. Agatston AS, Janowitz WR, Hildner FJ, Zusmer NR, Viamonte M, Detrano R. Quantification of coronary artery calcium using ultrafast computed tomography. *J Am Coll Cardiol*. 1990;15:827–32.
2. Montalescot G, Sechtem U, Achenbach S, et al. 2013 ESC guidelines on the management of stable coronary artery disease. *Eur Heart J*. 2013;34:2949–3003.
3. Forouzandeh F, Chang SM, Muhyieddeen K, et al. Does quantifying epicardial and intrathoracic fat with noncontrast computed tomography improve risk stratification beyond calcium scoring alone? *Circ Cardiovasc Imag*. 2013;6:58–66.
4. Mahabadi AA, Berg MH, Lehmann N, et al. Association of epicardial fat with cardiovascular risk factors and incident myocardial infarction in the general population: the Heinz Nixdorf Recall Study. *J Am Coll Cardiol*. 2013;61:1388–95.
5. Oikonomou EK, Marwan M, Desai MY, et al. Non-invasive detection of coronary inflammation using computed tomography and prediction of residual cardiovascular risk (the CRISP CT study): a post-hoc analysis of prospective outcome data. *Lancet*. 2018;392(10151):929–39.
6. Iacobellis G. Local and systemic effects of the multifaceted epicardial adipose tissue depot. *Nat Rev Endocrinol*. 2015;11:363–71.
7. Salgado-Somoza A, Teijeira-Fernandez E, Fernandez AL, Gonzalez-Juanatey JR, Eiras S. Proteomic analysis of epicardial and subcutaneous adipose tissue reveals differences in proteins involved in oxidative stress. *Am J Physiol Heart Circ Physiol*. 2010;299:H202–9.
8. Sacks HS, Fain JN, Cheema P, et al. Depot-specific overexpression of proinflammatory, redox, endothelial cell, and angiogenic genes in epicardial fat adjacent to severe stable coronary atherosclerosis. *Metab Syndr Relat Disord*. 2011;9:433–9.
9. Chatterjee TK, Aronow BJ, Tong WS, et al. Human coronary artery perivascular adipocytes overexpress genes responsible for regulating vascular morphology, inflammation, and hemostasis. *Physiol Genomics*. 2013;45:697–709.
10. Iacobellis G, Lonn E, Lamy A, Singh N, Sharma AM. Epicardial fat thickness and coronary artery disease correlate independently of obesity. *Int J Cardiol*. 2011;146:452–4.
11. Mahabadi AA, Balcer B, Dykun I, et al. Cardiac computed tomography-derived epicardial fat volume and attenuation independently distinguish patients with and without myocardial infarction. *PLoS ONE*. 2017;12(8.).
12. Mancio J, Azevedo D, Saraiva F, Azevedo AI, Pires-Morais G, Leire-Moreira A, Falcao-Pires I, Lunet N, Nettekourt N. Epicardial adipose tissue volume assessed by computed tomography and coronary artery disease: a systematic review and meta-analysis. *Eur Heart J Cardiovasc Imag*. 2017 [in press].
13. Rosito GA, Massaro JM, Hoffmann U, et al. Pericardial fat, visceral abdominal fat, cardiovascular disease risk factors, and vascular calcification in a community-based sample—the Framingham heart study. *Circulation*. 2008;117:605–13.
14. Mahabadi AA, Massaro JM, Rosito GA, et al. Association of pericardial fat, intrathoracic fat, and visceral abdominal fat with cardiovascular disease burden: the Framingham Heart Study. *Eur Heart J*. 2009;30:850–6.
15. McClain J, Hsu F, Brown E, et al. Pericardial adipose tissue and coronary artery calcification in the multi-ethnic study of atherosclerosis (MESA). *Obesity*. 2013;21:1056–63.
16. Ding JZ, Hsu FC, Harris TB, et al. The association of pericardial fat with incident coronary heart disease: the Multi-Ethnic Study of Atherosclerosis (MESA). *Am J Clin Nutr*. 2009;90:499–504.
17. Wassel CL, Laughlin GA, Araneta MRG, et al. Associations of pericardial and intrathoracic fat with coronary calcium presence and progression in a multiethnic study. *Obesity*. 2013;21:1704–12.
18. Mahabadi AA, Lehmann N, Kalsch H, et al. Association of epicardial adipose tissue with progression of coronary artery calcification is more pronounced in the early phase of atherosclerosis: results from the Heinz Nixdorf recall study. *JACC Cardiovasc Imag*. 2014;7:909–16.
19. Bos D, Shahzad R, van Walsum T, et al. Epicardial fat volume is related to atherosclerotic calcification in multiple vessel beds. *Eur Heart J Cardiovasc Imag*. 2015, jev086.
20. Mahabadi AA, Kalsch H, Robens T, et al. Association of epicardial adipose tissue with progression of coronary artery calcification is more pronounced in the early phase of atherosclerosis: Results from the Heinz Nixdorf recall study. *JACC: Cardiovasc Imag*. 2014;7:909–16.
21. Levey AS, Coresh J. Chronic kidney disease. *Lancet*. 2012;379:165–80.
22. Leivseth L, Brumpton BM, Nilssen TI, Mai XM, Johnsen R, Langhammer A. GOLD classifications and mortality in chronic obstructive pulmonary disease: the HUNT Study, Norway. *Thorax*. 2013;68:914–21.
23. Watanabe Y, Kozuma K, Hioki H, et al. Comparison of Results of Transcatheter Aortic Valve Implantation in Patients With Versus Without Active Cancer. *Am J Cardiol*. 2016;118:572–7.
24. Mancio J, Barros A, Leite-Moreira A, et al. Gender differences in the association of epicardial adipose tissue and coronary artery calcification: EPICHEART study: EAT and coronary calcification by gender. *Int J Cardiol*. 2017;249:419–25.
25. Mancio J, Fontes-Carvalho R, Oliveira M, et al. Coronary artery disease and symptomatic severe aortic valve stenosis: clinical



- outcomes after transcatheter aortic valve implantation. *Front Cardiovasc Med.* 2015;2:18.
26. Wold SAR, Wold H, Dunn WJ. III. The Collinearity Problem in Linear Regression. The Partial Least Squares (PLS) Approach to Generalized Inverses. *SIAM J Sci Stat Comput.* 1984;5(No. 3):735–43.
  27. Wold SM, Wold HH. *Lecture Notes in Mathematics Proc. Conf. Heidelberg: Matrix pencils, Piteå, Sweden. Springer-Verlag; 1983.*
  28. Trygg JSW. Orthogonal projections to latent structures (O-PLS). *J Chemom.* 2002;16:119–28.
  29. Tanami Y, Jinzaki M, Kishi S, et al. Lack of association between epicardial fat volume and extent of coronary artery calcification, severity of coronary artery disease, or presence of myocardial perfusion abnormalities in a diverse, symptomatic patient population: results from the CORE320 multicenter study. *Circ Cardiovasc Imag.* 2015;8:e002676.
  30. Margaritis M, Antonopoulos AS, Digby J, et al. Interactions between vascular wall and perivascular adipose tissue reveal novel roles for adiponectin in the regulation of endothelial nitric oxide synthase function in human vessels. *Circulation.* 2013;127:2209–21.
  31. Antonopoulos AS, Sanna F, Sabharwal N, et al. Detecting human coronary inflammation by imaging perivascular fat. *Science Transl Med.* 2017;9(398.).
  32. Alexopoulos N, Melek BH, Arepalli CD, et al. Effect of intensive versus moderate lipid-lowering therapy on epicardial adipose tissue in hyperlipidemic post-menopausal women: a substudy of the BELLES trial (Beyond Endorsed Lipid Lowering with EBT Scanning). *J Am Coll Cardiol.* 2013;61:1956–61.
  33. Nakamura T, Funahashi T, Yamashita S, et al. Thiazolidinedione derivative improves fat distribution and multiple risk factors in subjects with visceral fat accumulation—double-blind placebo-controlled trial. *Diabetes Res Clin Pract.* 2001;54:181–90.
  34. Cyrus T, Sung S, Zhao L, Funk CD, Tang S, Praticò D. Effect of low-dose aspirin on vascular inflammation, plaque stability, and atherogenesis in low-density lipoprotein receptor-deficient mice. *Circulation.* 2002;106:1282–7.
  35. Doll S, Dressen M, Geyer PE, et al. Region and cell-type resolved quantitative proteomic map of the human heart. *Nat Commun.* 2017;8:1469.
  36. Anjo SI, Santa C, Manadas B. Short GeLC-SWATH: a fast and reliable quantitative approach for proteomic screenings. *Proteomics.* 2015;15:757–62.