

PLANT SCIENCES

Pervasive hybridization with local wild relatives in Western European grapevine varieties

Sara Freitas^{1,2,3,†}, Małgorzata A. Gazda^{1,2,†‡}, Miguel Â. Rebelo^{1,†§}, Antonio J. Muñoz-Pajares^{1,3,4}, Carlos Vila-Viçosa^{1,2,3,5}, Antonio Muñoz-Mérida¹, Luís M. Gonçalves^{1||}, David Azevedo-Silva^{1,2,3}, Sandra Afonso^{1,3}, Isaura Castro⁶, Pedro H. Castro^{1,3}, Mariana Sottomayor^{1,2,3}, Albano Beja-Pereira^{1,3,7,8}, João Tereso^{1,3,5,9}, Nuno Ferrand^{1,2,3,10}, Elsa Gonçalves^{11,12}, Antero Martins^{11,12}, Miguel Carneiro^{1,2,3}, Herlander Azevedo^{1,2,3*}

Grapevine (*Vitis vinifera* L.) diversity richness results from a complex domestication history over multiple historical periods. Here, we used whole-genome resequencing to elucidate different aspects of its recent evolutionary history. Our results support a model in which a central domestication event in grapevine was followed by postdomestication hybridization with local wild genotypes, leading to the presence of an introgression signature in modern wine varieties across Western Europe. The strongest signal was associated with a subset of Iberian grapevine varieties showing large introgression tracts. We targeted this study group for further analysis, demonstrating how regions under selection in wild populations from the Iberian Peninsula were preferentially passed on to the cultivated varieties by gene flow. Examination of underlying genes suggests that environmental adaptation played a fundamental role in both the evolution of wild genotypes and the outcome of hybridization with cultivated varieties, supporting a case of adaptive introgression in grapevine.

INTRODUCTION

The European grapevine (*Vitis vinifera* L.) is one of the most charismatic plants of the Mediterranean agricultural landscape and one of the most widely grown fruit crops in the world. *V. vinifera* has diverged into two subspecies that distinguish cultivated varieties (*V. vinifera* ssp. *vinifera*) from their wild relatives (*V. vinifera* ssp. *sylvestris*), hereafter *vinifera* and *sylvestris*, respectively (1). *V. vinifera* is the only species of the *Vitis* genus' European clade, holding wild populations that occupy river banks and damp woods from the Transcaucasian region of West Asia to the Iberian Peninsula (2, 3). The origin and domestication centers for *V. vinifera* are both widely

considered to match the Transcaucasian region, as suggested by morphological data and the presence of higher nucleotide diversity in both wild and cultivated germplasm belonging to this region (4–6). The earliest archaeological evidence for domestication of Eurasian grapevine was observed in the South Caucasus, timing it to the Late Neolithic Period, 8 thousand years (ka) ago (7). Divergence between the two subspecies, estimated using whole-genome resequencing (WGS), places this event much earlier (22 to 400 ka ago) with an important bottleneck occurring ca. 8 ka ago (8, 9). Between 6 and 3 ka ago, viticulture spread south and west across the Mediterranean space (10).

Similar to most crops, grapevine still retains numerous unanswered questions regarding its origin and domestication path (11). A restricted origin hypothesis first predicted that diversity of cultivated grapes was limited to a few founder genotypes in a single location (12). Since then, use of molecular markers spanning a restricted number of loci has suggested the existence of gene flow between cultivated varieties and local wild genotypes, particularly associated with Western European wine varieties. Thus, there has been conflicting molecular evidence to support either multiple independent domestications (4, 13) or an initial domestication in the Transcaucasus followed by postdomestication hybridization with local wild relatives (14). Characterization of cultivated and wild genetic diversity across the Mediterranean geographic range has placed the Iberian Peninsula region as a strong candidate for local contribution of wild populations to the overall modern-day structure of the cultivated grape (4). The Iberian Peninsula is a hotspot for grapevine genetic diversity supporting hundreds of autochthonous varieties. Its diversity has been structured into three genetic groups that reflect either a core Iberian nature, a common genetic signature with Western and Central Europe varieties, or a Western Mediterranean provenance that incorporates the Maghreb (15). This complexity reflects an ancient and rich domestication history, which translates into the diversity and identity of Iberian wines such as the distinctive Vinhos Verdes.

¹CIBIO, Centro de Investigação em Biodiversidade e Recursos Genéticos, InBIO Laboratório Associado, Campus de Vairão, Universidade do Porto, 4485-661 Vairão, Portugal. ²Departamento de Biologia, Faculdade de Ciências, Universidade do Porto, 4099-002 Porto, Portugal. ³BIOPOLIS Program in Genomics, Biodiversity and Land Planning, CIBIO, Campus de Vairão, 4485-661 Vairão, Portugal. ⁴Departamento de Genética, Facultad de Ciencias, Universidad de Granada, Campus Fuentenueva, 18071 Granada, Spain. ⁵MHNC-UP, Museum of Natural History and Science of the University of Porto–PO Herbarium, University of Porto, Praça Gomes Teixeira, 4099-002 Porto, Portugal. ⁶CITAB, Centre for the Research and Technology of Agro-Environmental and Biological Sciences, Universidade de Trás-os-Montes e Alto Douro, Quinta de Prados, 5000-801 Vila Real, Portugal. ⁷DGAOT, Faculty of Sciences, Universidade do Porto, Rua Campo Alegre 687, 4169-007 Porto, Portugal. ⁸Sustainable Agrifood Production Research Centre (GreenUPorto), Universidade do Porto, Rua da Agrária 747, 4485-646 Vairão, Portugal. ⁹Centre for Archaeology, UNIARQ, School of Arts and Humanities, University of Lisbon, 1600-214 Lisbon, Portugal. ¹⁰Department of Zoology, Centre for Ecological Genomics and Wildlife Conservation, University of Johannesburg, 2006 Johannesburg, South Africa. ¹¹LEAF, Linking Landscape, Environment, Agriculture, and Food, Instituto Superior de Agronomia, Universidade de Lisboa, Tapada da Ajuda, 1349-017 Lisboa, Portugal. ¹²Portuguese Association for Grapevine Diversity-PORVID, Tapada da Ajuda, 1349-017 Lisboa, Portugal.

*Corresponding author. Email: hazevedo@cibio.up.pt

†These authors contributed equally to this work.

‡Present address: Institut de Biologie de l'ENS (IBENS), Département de Biologie, École Normale Supérieure, CNRS, INSERM, Université PSL, 75005 Paris, France.

§Present address: IPATIMUP, Instituto de Patologia e Imunologia Molecular da Universidade do Porto, Porto, Portugal; I3S, Instituto de Investigação e Inovação em Saúde, Universidade do Porto, Porto, Portugal.

||Present address: ITQB Nova, Avenida da República, 2780-157 Oeiras, Portugal.

Since the earliest domestication period, human activity led to the creation of thousands of grapevine varieties (1). Whole-genome resequencing currently offers new opportunities to address this domestication path. Here, we analyzed 100 whole-genome sequences from the *Vitis* genus to elucidate important aspects of grapevine domestication, including the singularity of Western European genotypes in their relationship with sympatric *sylvestris* genotypes. Our data support the hypothesis of a single major domestication event in *V. vinifera*, followed by postdomestication hybridization with wild relatives in Western Europe. A subset of Iberian varieties exhibited particularly extensive signs of unidirectional introgression with local wild genotypes. Analysis of introgression tracts and selective sweep mapping suggest that regions under selection in donor wild genotypes were favorably incorporated into introgressed regions of the Iberian varieties. Ensuing analysis of the underlying genes suggests a strong association with environmental adaptation and a scenario of adaptive introgression as the result of hybridization with local wild relatives.

RESULTS

Whole-genome resequencing dataset

In *V. vinifera*, several reports have emphasized the importance of Western Europe as a source of either independent domestication or postdomestication hybridization between cultivated forms and local wild plants (4, 6, 14). To provide a detailed understanding of this past

genetic history, we collected 51 cultivated (*vinifera*) samples, representing a large geographic range reinforced with Western European and particularly Iberian varieties, nine wild (*sylvestris*) samples from the Iberian Peninsula, and three *Vitis* sp. genotypes (table S1). Genomes were resequenced using Illumina technology. This dataset was complemented with publicly available sequencing data from 37 other genotypes (table S1). The total dataset comprised 100 genotypes and was composed of several *Vitis* sp. members, *sylvestris* samples from eastern and Iberian origins, and an array of table and wine *vinifera* varieties. Reads were mapped to the *V. vinifera* reference genome (Pinot Noir PN40024). Samples mapped, on average, to 86% of the genome, regardless of origin, showing a mapping depth of 5.2× (fig. S1).

Patterns of population structure

We began by investigating population structure between species within the *Vitis* genus and cultivated and wild *V. vinifera* samples, using clustering methods based on genotype likelihoods (16–18). Among other advantages, these methods use a probabilistic framework to tackle multiple aspects of population genomics, offering an extensive suite of solutions tailored specifically to medium- and low-coverage data. First, principal components analysis (PCA) was used to help visualize the relationships between the different *Vitis* species members (Fig. 1A and fig. S2, A and B). *Vitis rotundifolia* (also designated *Muscadinia rotundifolia*) was clearly divergent from the remaining genotypes, in line with previous WGS assessments (9, 19).

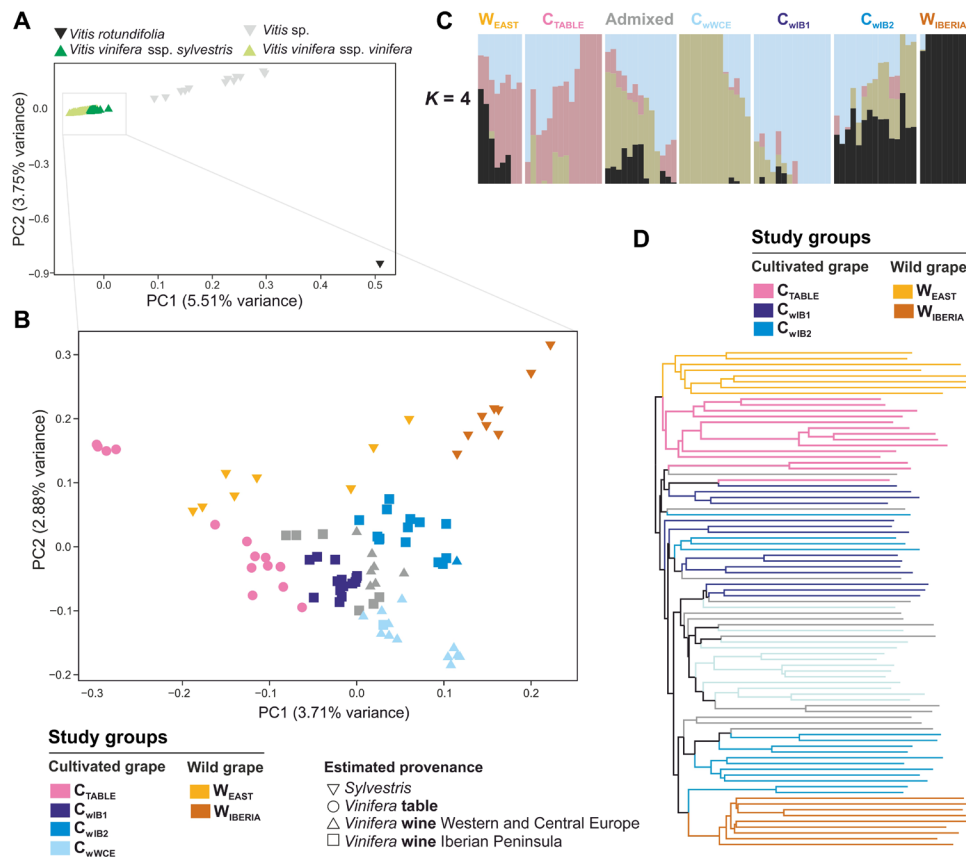


Fig. 1. Population structure analysis of *Vitis* sp. and *Vitis vinifera* genotypes. (A) PCA plot of *Vitis* sp. and *V. vinifera* wild and cultivated genotypes. (B) PCA plot of *V. vinifera* samples. (C) Ancestry proportions of all *V. vinifera* genotypes following admixture analysis for $K=4$; bars represent individual genotypes, organized into six study groups plus remaining admixed individuals. (D) Phylogenetic tree of *V. vinifera* samples.

Cultivated and wild *V. vinifera* formed a consistent cluster, with wild genotypes appearing closer to remaining *Vitis* species. We then resolved the relationship between cultivated and wild genotypes by excluding non-*V. vinifera* samples (Fig. 1B and fig. S2, C and D). This resulted in a clear separation between wild and cultivated varieties (PC2, 2.88% of the variance). Most notably, an overall east-to-west geographical gradient was evident both in wild and cultivated samples (PC1, 3.71% of the variance), consistent with a parallel westward expansion in these subspecies. Within cultivated varieties, there was a separation between table and wine varieties (Fig. 1B). Broadly, the PCA revealed a subclustering of wine varieties that reflected their estimated provenance. Varieties with estimated Iberian origin were split into two cohesive genetic groups, distinctly separated by varieties of Western and Central Europe estimated provenance. Overall results were strongly supported by ancestry and phylogenetic tree analysis (Fig. 1, C and D). Although the PCA seemed to explain a small percentage of the observed variance, values were similar to those reported using identical sequencing and PCA estimation methodologies (20, 21). Also, they followed the differentiation into wild-table-wine grapes of previous genome resequencing efforts (9, 19) and reflected the same clustering patterns in wine grapes obtained with 18K single nucleotide polymorphism (SNP) chip data (15). Subsequently, we used population structure data and the perceived geographical origin of the varieties to cluster and name genotypes within six study groups: Wild samples were divided between Eastern and Iberian groups (W_{EAST} , $n = 8$; W_{IBERIA} , $n = 9$), while cultivated varieties were divided between one table (C_{TABLE} , $n = 9$) and three wine groups, representing Western and Central Europe (C_{WUCE} , $n = 9$) and the Iberian Peninsula (C_{WIB1} , $n = 13$; C_{WIB2} , $n = 12$) (Fig. 1, B to D). We estimated identity-

by-descent (IBD) scores to single out the presence of clones, in which case, a single clone was retained for subsequent population studies (fig. S3 and table S2).

When interrogating these study groups for patterns of ancestry using admixture analysis, C_{WIB2} displayed compelling evidence of shared ancestry with Iberian *sylvestris* genotypes (Fig. 1C and fig. S4A). These results were highly contrasting with its C_{WIB1} counterpart in $K = 4$ and other meaningful simulations ($K = 2$ to $K = 6$). Furthermore, C_{WIB2} was the wine group closest to W_{IBERIA} genotypes in the PCA (Fig. 1B), and phylogenetic tree analysis placed most of the C_{WIB2} genotypes within the same subclade as W_{IBERIA} samples (Fig. 1D and fig. S4B). This evidence amounts to a high likelihood of genetic relatedness between C_{WIB2} and W_{IBERIA} groups. In addition, wine varieties from Western and Central Europe were also polarized by PC1 of the multivariate analysis to comparable levels as W_{IBERIA} and C_{WIB2} (Fig. 1B). They also clustered next to these two groups in the phylogenetic tree, suggesting some extent of admixture between C_{WUCE} and W_{IBERIA} , although smaller than that observed for C_{WIB2} . Table varieties clustered closer to wild genotypes from the center of origin (W_{EAST}) in all analysis (Fig. 1), supporting previous evidence of high phenotypic and genetic differentiation between table and wine grapes (9, 22). This also indicates that a potential hybridization event in Western European grapevine varieties took place after differentiation between wine and table grapes.

Introgression testing between cultivated varieties and local wild genotypes

Given the potential for hybridization with local wild relatives displayed by C_{WIB2} , we next tested for admixture using Patterson's D statistics—an explicit test of gene flow (Fig. 2A) (23). We configured

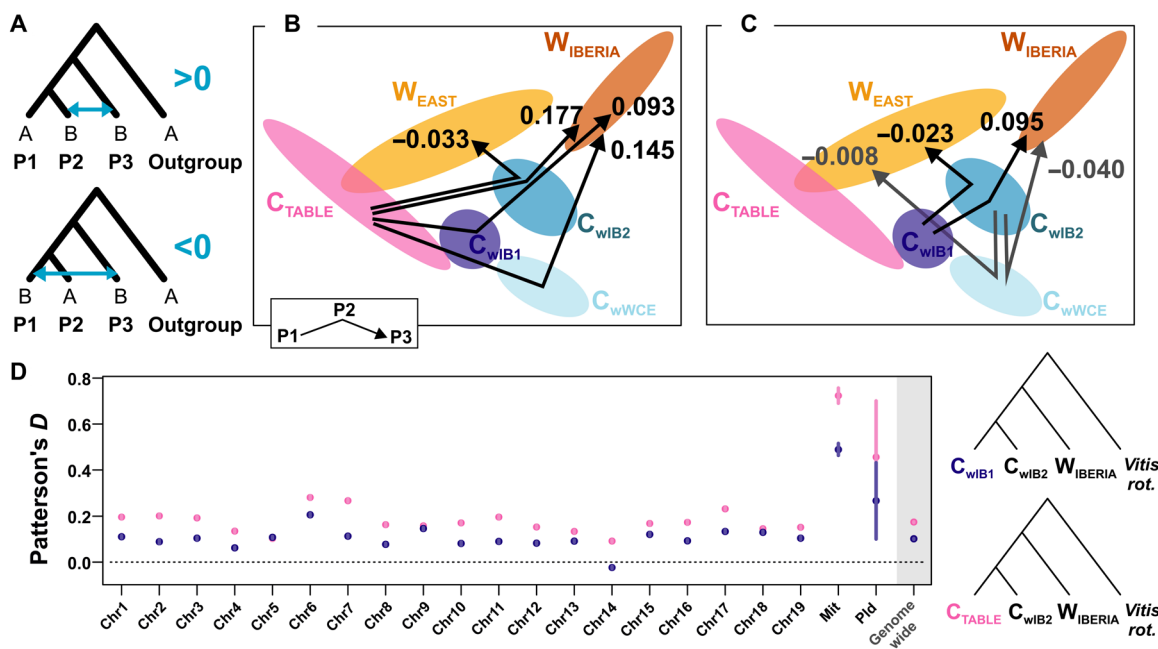


Fig. 2. Patterson's D statistics test for admixture. (A) Patterson's D statistics (or ABBA-BABA test) assumes that in four groups phylogenetically related as such— $((P_1, P_2), P_3), O$)—the proportion of ABBA and BABA sites will be equal under a scenario of incomplete lineage sorting without gene flow. Genome-wide levels of introgression from the donor P_3 group can be detected by the presence of statistically significant levels of excess ABBA ($P_3 \rightarrow P_2$) or BABA ($P_3 \rightarrow P_1$) patterns. (B) Genome-wide Patterson's D scores when confronting table (P_1) against wine groups as P_2 and wild groups as P_3 . (C) Genome-wide Patterson's D scores assuming wine groups as either P_1 or P_2 and wild groups as P_3 . (D) Chromosome-level estimates of Patterson's D statistics (\pm SE) estimated in the C_{TABLE} or C_{WIB1} (P_1), C_{WIB2} (P_2), and W_{IBERIA} (P_3) configurations.

the statistic to test potential gene flow from *sylvestris* donor groups (either W_{EAST} or W_{IBERIA}) to recipient cultivated groups. When placing C_{TABLE} (which previously showed no evidence of admixture with W_{IBERIA}) as P_1 , wine genotypes as P_2 , and W_{IBERIA} as the donor group, we observed positive and statistically significant Patterson's D levels across all tests (Fig. 2B). Results were strongest for C_{wIB2} ($D = 0.1772$; $Z = 114.2490$; $P = 0.0000$), followed by C_{wWCE} ($D = 0.1448$; $Z = 76.7658$; $P = 0.0000$) and C_{wIB1} ($D = 0.0927$; $Z = 59.4755$; $P = 0.0000$). Conversely, D scores were negative and much closer to zero (neutrality) when replacing W_{IBERIA} with W_{EAST} (Fig. 2B and table S3). Statistical support for the strongest gene flow occurring between W_{IBERIA} and C_{wIB2} was still evident when strictly wine groups were placed as recipients (Fig. 2C). When looking at each chromosome separately, there was a highly heterogeneous distribution of D (Fig. 2D), indicating that exchange of genetic information was not random across the genome. We found that chromosomes 6 ($D = 0.20$)

and 14 ($D = -0.03$) provided extreme cases of high and low admixture, respectively. When extending this analysis to mitochondrial and chromosomal genomes, we observed an increase in Patterson's D , which suggests a *sylvestris* maternal progenitor in the cross(es) that resulted in admixture. Collectively, these results support the first genome-level claim of admixture between Western European grapevine varieties and local wild relatives.

Analysis of introgression impact

We next looked at the impact of introgression by performing a genome-wide characterization of three separate properties of the data: (i) nucleotide diversity, (ii) IBD scores, and (iii) genetic differentiation. Diversity indexes and measures of population differentiation were estimated across the genome while taking into account nucleotide uncertainty (16) (Fig. 3 and fig. S5). Results for nucleotide diversity (π) (Fig. 3A) and Watterson's theta (θ_w) (fig. S5A) showed a

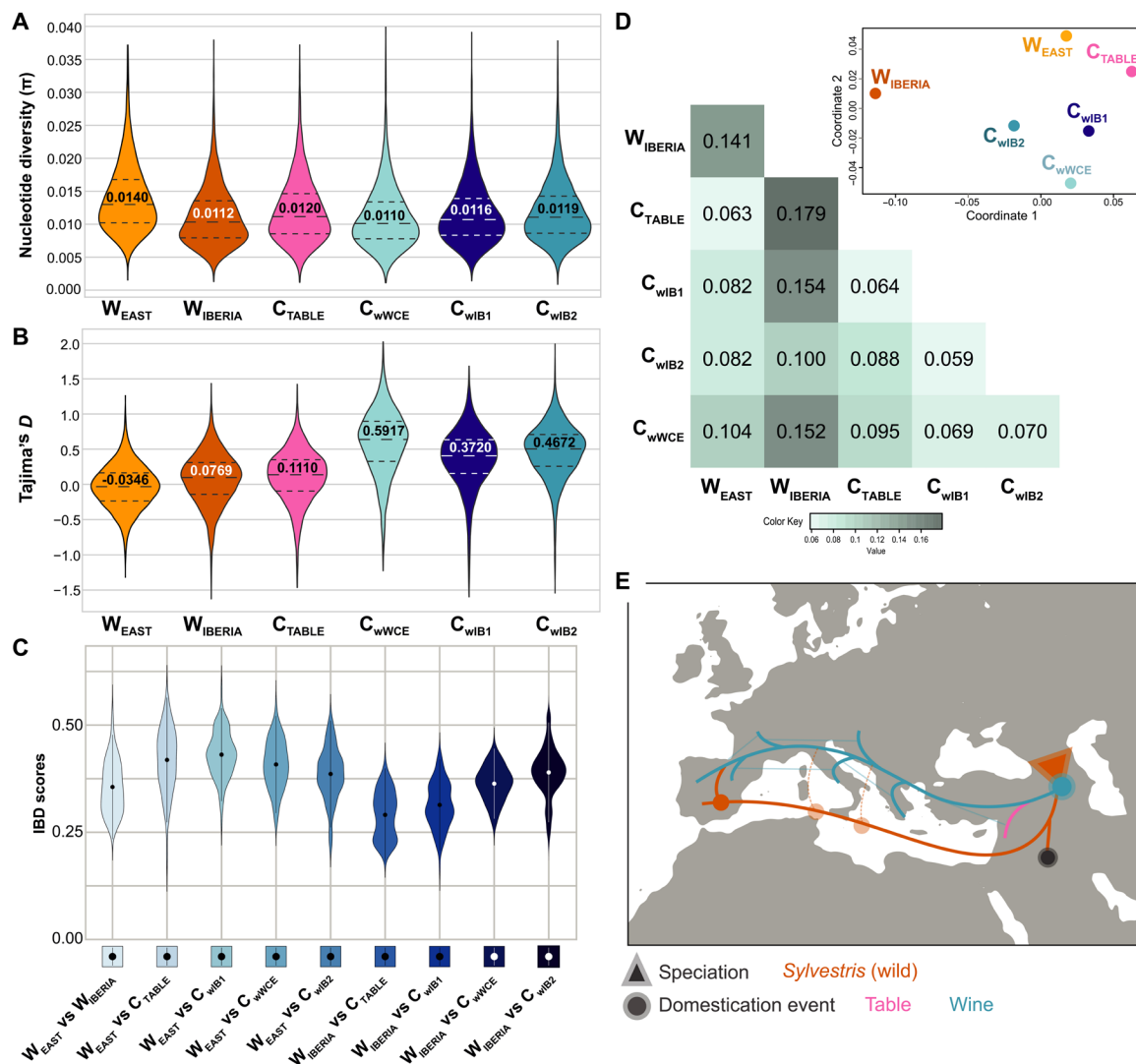


Fig. 3. Nucleotide diversity and genetic differentiation of the six study groups. (A and B) Violin plot distribution of nucleotide diversity (A) and Tajima's D (B). (C) Violin plot of pairwise IBD scores reflecting comparisons between two genotypes of interest. (D) Heatmap of the group differentiation matrix of averaged F_{ST} values (inset: multidimensional scaling analysis of the F_{ST} matrix for study group differentiation). (E) Biogeographical model depicting *Vitis vinifera* speciation (triangle) and important events during domestication history (circles). Statistics in (A), (B), and (D) were estimated as 100-Kb nonoverlapping windows across the genome.

decrease in diversity when comparing wild grapes from the East ($\pi = 0.0140$; $\theta_W = 0.0140$) and the wild Iberian group ($\pi = 0.0112$; $\theta_W = 0.0108$). There was also a decrease in nucleotide diversity from wild to table ($\pi = 0.0120$) and wine ($\pi = 0.0110$ to 0.0119) groups, which is consistent with the presence of a weak domestication bottleneck (14). Comparisons were all statistically supported ($P < 0.001$). There was an increase in nucleotide diversity in C_{wIB2} when compared to the remaining wine groups, which is compatible with higher proportion of admixture following introgression of local *sylvestris* into the *vinifera* genetic pool. Tajima's D statistics were close to zero for W_{EAST} ($TD = -0.0346$), but they increased for the remaining study groups (Fig. 3B), consistent with population contraction (a likely scenario in the wild Iberian population). An overall similar profile was observed when we summarized IBD scores between all individuals of a study group against all individuals of a second group (Fig. 3C). Groups displayed comparable levels of heterozygosity, albeit slightly higher in cultivated varieties (0.341 ± 0.024 ; $n = 43$) when compared to wild genotypes (0.335 ± 0.014 ; $n = 17$) (fig. S5C).

To capitalize on the opportunities provided by our dataset on understanding grapevine domestication, we determined the impact of introgression on differentiation. We calculated the fixation index (F_{ST}) (24) across all pairwise group comparisons and used multidimensional scaling to reduce F_{ST} distances to a two-dimensional space (Fig. 3D). Results completely mirrored our previous PCA analysis (Fig. 1A). Highest F_{ST} was observed for table grapes against wild Iberian genotypes ($F_{ST} = 0.179$). This result, in conjunction with the fact that table grapes were the group closest to wild Eastern grapes (second lowest $F_{ST} = 0.063$), suggests an altogether independent path between table *vinifera* and Iberian *sylvestris* genotypes (Fig. 3E). Most notably, we observed three important and correlated observations: (i) All three wine groups were more differentiated against W_{IBERIA} ($F_{ST} = 0.100$ to 0.154) than W_{EAST} ($F_{ST} = 0.082$ to 0.104), suggesting a common origin in W_{EAST} ; (ii) there was a sharp (~33%) decrease in F_{ST} in W_{IBERIA} versus C_{wIB2} when compared with other wine groups, supporting the existence of an introgression event; yet, (iii) the overall lowest F_{ST} , with values that represent fairly low divergence, was observed between Iberian wine groups ($F_{ST} = 0.059$), as might be expected with a recent differentiation (Fig. 3D). Collectively, these observations strongly undermine the possibility of an independent grapevine domestication event based on Western European wild grape ancestors. Rather, they favor the following model: (i) a single major domestication in the Transcaucasus, (ii) differentiation between wine and table grapes, and (iii) a postdomestication hybridization event with local wild grapes in Western Europe (most likely taking place in the Iberian Peninsula) (Fig. 3E).

Identification of introgression tracts in Iberian grape varieties

Next, we used f^{\wedge}_d statistics to assess the fraction of the genome shared through introgression (25). The analysis was restricted to the same biogeographical space (Iberia), where we had the strongest and weakest signs of introgression in wine study groups, sympatric with the potential donor (wild) genotypes, i.e., configuration f^{\wedge}_d ($P_1 = C_{wIB1}$, $P_2 = C_{wIB2}$, $P_3 = W_{IBERIA}$, and $O = V. rotundifolia$) (Fig. 4A). Averaged genome values from the sliding window analysis were fairly high ($f^{\wedge}_d = 0.216$). Together with the previous ancestry analysis (see Fig. 1C), our results suggest that the proportion of introgressed tracts may range between 25 and 50% of the grapevine genome in C_{wIB2} varieties. Nonetheless, we decided to implement a

conservative approach in defining introgression tracts (see Materials and Methods), which resulted in 219 tracts averaging 162 Kb in size and representing 8.11% of all genomic windows (Fig. 4A). Chromosome 6 displayed the largest number of tracts (33), consistent with its highest averaged Patterson's D score (Fig. 2D). In total, introgression tracts contained 2214 genes (data file S1). To extract biological meaning, genes were subjected to Gene Ontology (GO) term functional enrichment analysis (table S4), which highlighted an overrepresentation ($P < 0.05$) in abscisic acid (ABA) signaling genes. ABA is the canonical hormone in plant adaptation to abiotic stress stimuli (26). Of importance also is the presence of a homolog for the ABA receptor *PYR1* (VIT_02s0012g01270), which is the sensor protein for ABA (27). Enrichment analysis also signaled grapevine *PATHOGENESIS RELATED-10* homologs, strongly associated not only with biotic but also with abiotic stress responses (28). Results support a scenario where introgression in C_{wIB2} grapevine varieties implicated local environmental adaptation.

Detection of signatures of positive selection across the genome and overlap with introgression tracts

We next reasoned that some regions under selection might be favored in introgressed tracts of C_{wIB2} . To address this, we focused on the detection of selection signatures across the genome, by comparing cultivated varieties and Iberian wild genotypes, against the wild ancestral (W_{EAST}) (Fig. 3E). A catalog of potential positive selection signals was identified through four complementary statistics that use different properties of the data: genetic differentiation (F_{ST}), genetic diversity [reduction of diversity (ROD)], and the allele frequency spectrum of mutations (ΔTD and Fay and Wu's H). We then implemented a summarization strategy using decorrelated composite of multiple signals (DCMS) (table S5) (29). Multiple comparisons (Fig. 4B and data file S2) revealed high and differentiated signals of positive selection across the genome. We observed the differentiation that underpinned domestication of wine and table grapes, with shared selection targets (e.g., chromosome 17) contrasting with a series of genomic regions specific for each cultivated study group (Fig. 4B; W_{EAST} versus $C_{wTABLE}/C_{wWCE}/C_{wIB1}/C_{wIB2}$). The data also provided an opportunity to look at the genomic fingerprint of adaptation of *sylvestris* plants as they expanded westward from their speciation center (Fig. 4B; W_{EAST} versus W_{IBERIA}). Strongly selected regions (95th percentile) included an extensive set of genes associated with biotic and abiotic stress responses, including homologs of the ABA sensing and signaling pathway, and multiple pathogen resistance genes with importance for grapevine biology (data file S3), indicating that biogeographical expansion was most likely driven by the capacity to adapt to newly found external challenges.

We then investigated whether introgressed tracts in C_{wIB2} might match regions under positive selection. A partial overlap could be observed between regions under selection in C_{wIB2} and W_{IBERIA} (Fig. 4B). We cross-referenced genes in introgressed tracts and genes under positive selection in Iberian wild genotypes against multiple signals of positive selection identified for the various wine and table study groups. In this comparison, C_{wIB2} consistently displayed two to three times as many shared genes when compared to the remaining cultivated groups (Fig. 4C). This result suggests that introgression and selection were not independent events. Furthermore, the introgressed regions contained 76 genes with signatures of positive selection in both W_{IBERIA} and C_{wIB2} (table S6). The gene

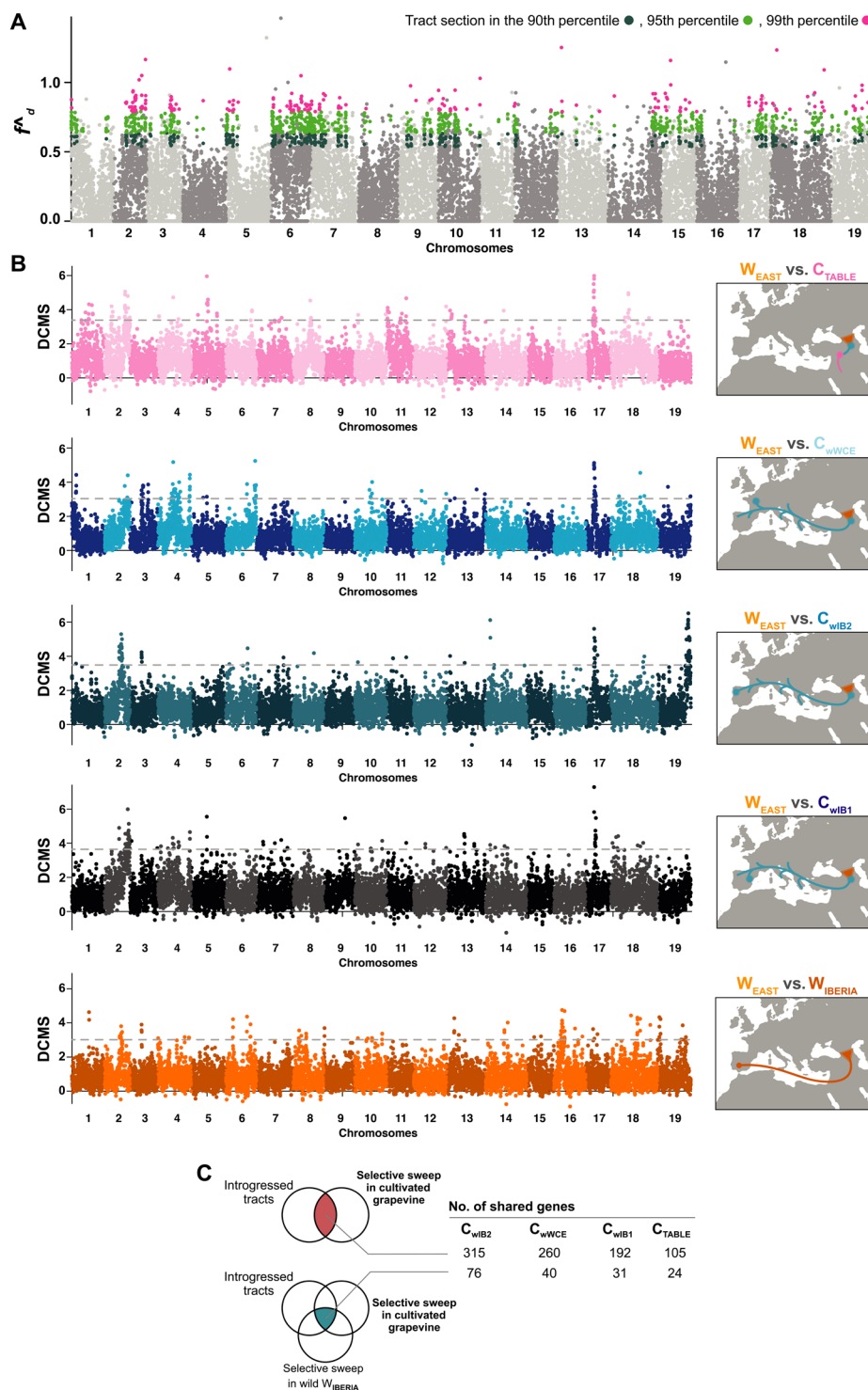


Fig. 4. Introgression regions and signatures of positive selection in Iberian genotypes. (A) Manhattan plot of f^{Λ}_d scores for detection of introgressed tracts in C_{WIB2} , using 20-Kb nonoverlapping windows across the genome, assuming the configuration f^{Λ}_d ($P_1 = C_{WIB1}$, $P_2 = C_{WIB2}$, $P_3 = W_{IBERIA}$, $O = V. rotundifolia$). Singleton windows with elevated f^{Λ}_d scores were not considered as tracts (see Materials and Methods for details). The x axis shows chromosome positions. (B) Manhattan plots of DCMS scores for C_{TABLE} versus W_{EAST} , C_{WWCE} versus W_{EAST} , C_{WIB2} versus W_{EAST} , C_{WIB1} versus W_{EAST} , and W_{IBERIA} versus W_{EAST} estimated across the genome in 100-Kbp windows with 50-Kbp steps. Dashed line represents 95th percentile cutoff. The x axis shows chromosome positions. (C) Venn summarization of shared genes between introgressed tracts in C_{WIB2} , signatures of positive selection in wild groups (W_{EAST} versus C_{WIB2}), and signatures of positive selection in cultivated grapevine groups against W_{EAST} .

set comprised highly relevant homologs of genes associated with flowering and light perception (*CONSTANS-Like*, VIT_00s0194g00070; *FAR1-Related*, VIT_00s0194g00200), pathogen perception and hormonal signaling (*RPP2A*, VIT_18s0072g01230; *ICS2*, VIT_17s0000g05750), abiotic stress responses to cold (*ADA2B*, VIT_00s0194g00130) and drought (*ERD4/OSCA1.8*, VIT_02s0109g00230), and sugar content regulation (*PKR*, VIT_02s0109g00080). The latter two genes, *ERD4* and *PKR*, integrate one of the largest and most robust signals of introgression observed in our analysis, positioned in chr2, and consisting of five consecutive introgression tracts (Fig. 5). Their contiguity suggests that they may be part of a large introgression tract, containing additional positively important homologs of known abiotic and biotic stress determinants (e.g., *MED25*, VIT_02s0012g02620; *ABC-transporter Homolog*; VIT_02s0012g02770; *Disease resistance protein RPM1*, VIT_02s0012g02720; *Putative disease resistance protein RGA1*, VIT_02s0109g00420; and multiple Geraniol 8-hydroxylase-coding genes) (Fig. 5E). This genomic section exemplifies our hypothesis in which robust f^{\wedge}_d signals of introgression often equaled a peak in selection signatures in the C_{wIB2} , including elevated levels of Tajima's D and ROD . They also matched a peak in selection signatures

in W_{IBERIA} , but not in C_{wIB1} (Fig. 5, C and D). *PRK* is particularly meaningful since this sugar-associated regulator is positioned within the largest introgression tract and both C_{wIB2} and W_{IBERIA} sweeps (Fig. 5E), targeting it as a key functional candidate for future characterization studies. Collectively, these findings highlight the functional pathways that most likely drove introgression from local wild populations into a range of Western European grapevine varieties.

DISCUSSION

Implementation of whole-genome resequencing is currently driving an onset of population genomic approaches that target the genetic basis of domestication, selection, and adaptation events. Here, we resequenced dozens of grapevine genotypes and provided new evidence that Western European cultivated grapes hosted a major postdomestication hybridization event with local wild genotypes, rather than independent domestication. In grapevine, such an event likely took place in the Iberian Peninsula. However, a molecular signature of introgression was also found across multiple grape varieties of Western Europe outside the Iberia. Whether a single or multiple

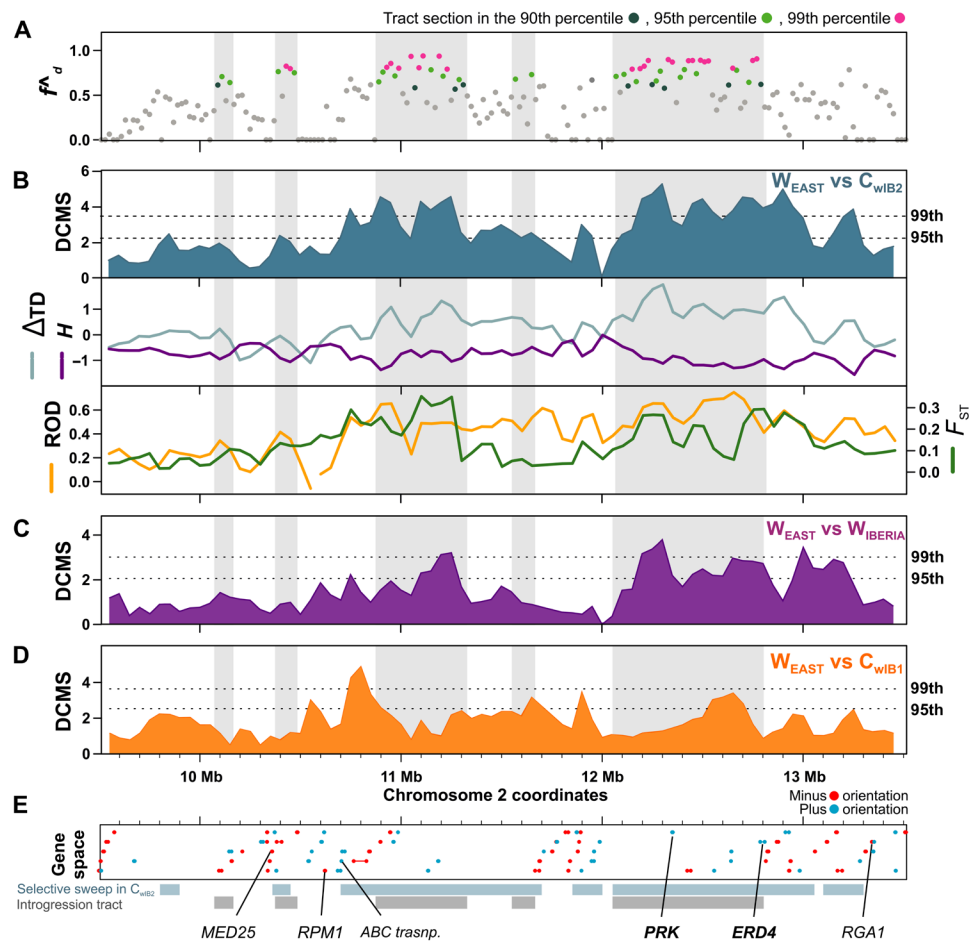


Fig. 5. Signals of introgression and positive selection in one of the strongest introgression tracts for the C_{wIB2} study group, positioned in chromosome 2. (A) Zoom-in on chromosome 2 (9.5- to 13.5-Mb coordinates) details five neighboring introgression tracts determined by top f^{\wedge}_d scores in a 20-Kb sliding window analysis of configuration f^{\wedge}_d ($P_1 = C_{wIB1}$, $P_2 = C_{wIB2}$, $P_3 = W_{IBERIA}$, $O = V. rotundifolia$). (B) DCMS scores for the W_{EAST} versus C_{wIB2} comparison (top) and scores for the selection signature statistics composited in the DCMS analysis (ΔT_j 's D and Fay and Wu's H in the middle; F_{ST} and ROD in the bottom). (C) DCMS scores for the W_{EAST} versus W_{IBERIA} comparison. (D) DCMS scores for the W_{EAST} versus C_{wIB1} comparison. (E) Gene space and annotation of highlighted genes in this genomic interval.

postdomestication hybridization events occurred across the Mediterranean basin is yet to be determined. Our data support a growing body of literature showing that hybridization events leading to postdomestication gene flow are mainstream occurrences during crop geographical expansion (30). In few crops, this phenomenon has been associated with adaptive introgression (30, 31). Similarly, our genome-level approach allowed us to (i) recognize introgression tracts, (ii) detect selective sweeps underpinning adaptation of wild populations, and (iii) identify genes of interest mutually involved in adaptation and introgression.

Western European varieties reflect postdomestication hybridization rather than independent domestication

In the present work, we tested whether postdomestication hybridization or an independent domestication event underpinned the development of Western European wine varieties [reviewed in (11)]. The likelihood of an independent domestication event should not be minimized, since recent WGS hints at the possibility of an independent history for a specific set of grapevine cultivars from the Levant (32). However, our results provide genome-level evidence that Western European wine varieties did not originate from independent domestication but rather from a postdomestication hybridization event. Compared to insights generated from markers with ascertainment bias, our data contradict previous claims for an independent domestication (4, 13, 33–36) and help clarify ambivalent hypothesis (6, 37–40), in favor of a postdomestication hybridization model (14, 41). Furthermore, our results suggest a common domestication framework that contemplates both wine and table grapes deriving from the historically and genetically accepted domestication center in the Transcaucasus, followed by expansion of grapevine across the Mediterranean basin, where it hybridized at least once with local *sylvestris* populations (Fig. 3E).

Even though feralized domesticate individuals can be found in the Iberian Peninsula, their abundance proportions seem to be fairly small (37, 39). Here, introgression directionality testing using f^{\wedge}_d statistics indicated unidirectional gene flow between *sylvestris* and *vinifera* populations, supporting previous 3-population tests on SNP chip data (14). Another key finding was the multiple evidence that all three wine study groups seem to display, to varying degrees, a *sylvestris* introgression signature (summarized as $C_{wIB2} > C_{wWCE} > C_{wIB1}$) (Fig. 2). This suggests that introgression historically permeated most of the modern grapevine wine varieties found in Western Europe. Future studies should now address the origin and whether these introgression signatures are derived from a single or multiple hybridization events (Fig. 3E). Our varietal dataset was structured into groups that broadly reflect previous population structuring using SNP chip data (15, 34), in which C_{wIB1} can be seen as a core group of typical Iberian varieties, while C_{wIB2} are Iberian varieties with an affinity to Western and Central Europe genotypes (15). In this context, the possibility that the hybridization responsible for C_{wIB2} took place outside the Iberian Peninsula needs to be considered. However, the likeliest scenario is that this hybridization occurred in the Iberian Peninsula. C_{wIB2} showed the highest and C_{wIB1} showed the lowest introgression signatures, yet both groups presented the closest genetic proximity, indicating recent differentiation. Ample studies using low-resolution molecular markers support the genetic proximity between local *sylvestris* populations and modern cultivated varieties in Portugal (33, 36, 39, 42) and Spain (4, 6, 37). Last, the chlorotype that characterizes wild populations

in Western Europe is more prevalent in cultivated varieties from the Iberian Peninsula, when compared to the remaining geographies (4).

In a single-introgression model, C_{wIB2} -related genotypes may have acted as donors of *sylvestris* genetic material, further diluted in Western European cultivated varieties by backcrossing with *vinifera* as a result of purposeful breeding. The long track record of historical flow of varieties across Europe, particularly since Roman times (43, 44), offers a framework for interchange between Iberian and Western and Central Europe varieties. Recent ancient DNA analysis suggests a transition in French grapevine diversity from Roman to Medieval times, in which early Roman period seeds clustered closer to Iberian and Eastern European grape varieties, whereas Late Roman and Early Medieval seeds were more similar to modern Western Europe varieties (41). In agreement, pip morphometric studies documented a shift from abundant morphologically wild pips in earlier chronologies to domestic types in the Late Roman and Medieval times, suggesting greater selection efforts in these later periods (44). Meanwhile, one should also consider a multiple-introgression model, in which hybridization events occurred independently in multiple geographic locations (Fig. 3E). Non-genome-level studies have suggested a genetic relatedness with local wild genotypes in cultivated varieties from Italy, France, and the Balkans (6, 13, 38, 40, 45, 46), but whether these signatures reflect a single or multiple hybridization events remains to be established. Future whole-genome resequencing efforts across the Mediterranean distribution range will be vital to expand our knowledge on postdomestication hybridization, particularly in the wine-producing varieties of Western Europe.

Selection signatures corroborate a case of adaptive introgression in grapevine

Screening for wild introgression signatures that may be present in the cultivated gene pool can be an effective strategy to uncover wild diversity relevant for crop adaptation to current environmental changes (30). Our evidence suggests that adaptive introgression is common in cultivated grapes, since many wild genes under natural selection seem to have been favored and retained in introgressed cultivated varieties (Figs. 4 and 5). The size of estimated introgression in the strongest admixed study group, C_{wIB2} , suggests the replacement of a massive number of alleles for new functional variants. Such an event is likely to lead to important phenotypic differences (30). We used a WGS genomics strategy that is powerful for population-scale studies, as it facilitates sample comparison against a common reference genome (47), but recognize as a caveat of the approach the failure to account for *sylvestris* genomic regions that are absent from the *vinifera* reference genome. Genome alignment between our reference genome and the recent high-quality assembly of the *V. vinifera* ssp. *sylvestris* genome (48) highlights the absence of major structural variations between both genomes (fig. S6), which should minimize this bias. Moreover, we combined detection of introgression with detection of selection, to refine our capacity to identify impactful genes. We subsequently singled out a set of 76 genes that belong to selective sweeps in C_{wIB2} and W_{IBERIA} and are part of introgression tracts between both groups (table S6). They offer high confidence candidates for trait architecture determination in C_{wIB2} . Using small SNP panels, Cunha and co-workers (39) recently genotyped the Portuguese national variety catalog plus local *sylvestris* genotypes, showing that a subset of varieties with strong overlap with C_{wIB2} clustered with local wild relatives. Several

varieties belonged to the Vinhos Verdes demarcated region typical of Northwestern Iberia. In our studies, the provenance of C_{wIB2} members is associated with the north of Portugal, and 7 of 11 members are canonical Vinhos Verdes varieties, firmly establishing how a major introgression event characterizes this Iberian wine type. Remarkably, Vinhos Verdes are naturally sparkling wines with lower sugar and higher acidity, suggesting that there may be a genetic component in addition to the viticultural and environmental factors that help shape their typicity. Among the 76 genes of interest (table S6), we singled out *PKR* (VIT_02s0109g00080) because of its overlap with an interval showing strong signatures of both positive selection and introgression (Fig. 5). *PKR* encodes for a phosphoribulokinase that can be accounted for sugar content regulation, and its Arabidopsis best ortholog (*AtPRK*, AT1G32060) is involved in redox regulation of the Calvin-Benson cycle (49).

In this report, we show an east-to-west genetic gradient in both wild and cultivated genotypes (PC1; Fig. 1B), which supports earlier studies (6, 14, 22, 34) and corroborates the presence of introgression. The latter is likely to have favored a reduction in the genetic load (i.e., the “cost of domestication”) previously reported in grapevine (9), evidenced here by the increase in nucleotide diversity in C_{wIB2} . In the W_{IBERIA} population, selective sweeps were likely associated with resistance and adaptation mechanisms, detected by the presence of a large number of genes involved in transcriptional control, pathogen resistance, and hormonal modulation (data file S3). In other crops, adaptive introgression has been associated with adaptation to altitude and geographical expansion (50, 51). Similarly, we highlight how Vinhos Verdes varieties are typical of the Northwestern Iberian Peninsula, characterized by a wet temperate Atlantic climate that contrasts severely with the dry Mediterranean climate toward the Iberia Southeast (52). Considering that *sylvestris* plants are lianas that favor high-humidity conditions (37), introgression may have enabled cultivated grapes to quickly rewire water usage signaling and response pathways. In support, many of our 76 genes of interest are involved in ABA/drought responses. The trehalose 6-phosphate phosphatase (TPP) family member VIT_15s0046g01000 links sugar and abiotic stress adaptation by being involved in the control of sugar utilization and in the tolerance response to drought, as seen in other plants (53). VIT_18s0072g01220 is a putative grapevine ABA transporter (54) that may interfere with ABA distribution and ultimately control the ABA-regulated stress responses (55). VIT_00s0194g00210 is an ortholog of the Arabidopsis *TPK1* vacuolar K^+ channel involved in the ABA- and CO_2 -mediated stomatal closure (56). Other genes with orthologs implicated in drought/ABA responses include the transcriptional adapter *ADA2B* (VIT_00s0194g00130) (57) and Early-Responsive to Dehydration stress protein *ERD4* (VIT_02s0109g00230) that belongs to the OSCA family of mechanically activated ion channels involved in osmosensing (58). The latter OSCA proteins were recently associated with regulation of plant stomatal immunity (59). Last, our 76 genes of interest also incorporate the homologs of *ISOCHORISMATE SYNTHASE 2* (VIT_17s0000g05750), which is involved in the biosynthesis of salicylic acid (SA), the central hormone in local and systemic acquired resistance against pathogens (60), as well as *DISEASE RESISTANCE PROTEIN RPP2A* (VIT_18s0072g01230), an ortholog of genes linked to downy mildew resistance (61). Thus, it seems that introgression affected on upstream hormonal control of environmental responses, especially those involving ABA and SA. These results emphasize the potential of these wild populations as sources of previously unknown

allelic diversity for breeding, as suggested for grapevine and other major crops (62, 63).

The timing of postdomestication hybridization

An important question now remains as to the historical timing of postdomestication hybridization. Genome resequencing data suggest a protracted domestication history in which *sylvestris* and *vinifera* diverged anytime between 200–400 and 22 ka ago. Models show an important genetic bottleneck ca. 8 ka ago that matches the earliest archaeological evidence of Eurasian grapevine use in the Transcaucasus and marks the beginning of purposeful cultivation in grapevine (7–9, 11). It is generally accepted that the Transcaucasus region approximates the primary domestication center, after which grapevine use (and possibly a wine culture) spread to Anatolia and across the Mediterranean following the main civilizations (10, 64). This assumption provides an extensive time frame for a subsequent hybridization event. There is multiple support for the use of wild grape across Europe and the Mediterranean civilizations before the widespread use of domesticated grape [reviewed by (10)]. In the Iberian Peninsula, there is evidence for gathering of wild grapes by hunter gatherers in the Early Holocene (65) and by the first prehistoric farmers 8 to 4 ka ago (43), and its multipurpose use seems to have extended until the late 20th century (66). This means that locals have been familiar with native *sylvestris* populations and therefore amenable to take advantage of crosses with domesticated *vinifera*. In our report, *D* statistics (Fig. 2) corroborates previous chlorotype data (4) to support an original cross with maternal *sylvestris* provenance. Given the differentiated flower morphology of subspecies *vinifera* (hermaphrodite) and *sylvestris* (unisexual), and in the absence of reproductive barriers, it looks like a plausible scenario that wild plants were the receptors of domesticated pollen as suggested by molecular data. This might show up as “wild” plants (possibly adjacent to domesticated vineyards), displaying superior berry/bunch characteristics. As to the timing of this event, the earliest evidence of grapevine cultivation in the Iberian Peninsula dates back to 2900 years ago and is based on Phoenician influence (43, 67), making it the earliest tentative moment for an introgression event in this region. In stark contrast, we show how varieties from the C_{wIB2} population can display up to 25 to 50% of introgression tracts (Figs. 1 and 2), placing them as potential F1s or second-generation backcrosses. In grapevine, this is not necessarily recent because of the extensive use of clonal lineaging since Roman times (10). In support, ancient DNA analysis of French medieval grape pips recently provided evidence for 900 years of uninterrupted vegetative propagation (41). The study also suggests the presence of gene flow between local wild grapevines and cultivated varieties, timing it to the early stages of viticulture in France (ca. 2500 years ago). Within the context of the Iberian Peninsula, we find additional support that hybridization was not a fairly recent event. A morphometrics study of grape pips from Northwestern Iberia archaeological sites grouped medieval and Roman pips close to the modern variety *Alvarinho*(PT)/*Albariño*(SP) (68). This C_{wIB2} member is a hallmark variety for Vinhos Verdes wines and was suggested to be a first-generation migrant from *sylvestris* based on simple sequence repeat (SSR) data (33). Another C_{wIB2} variety, Amarel, is mentioned in 1532 writings addressing the North of Portugal (69). Collectively, results frame a postdomestication hybridization event in the Iberian Peninsula between 2900 and 500 years ago. Definitive clues are likely to be hidden in the DNA of archaeobotanical samples. Future approaches should

concentrate on using genomic approaches to confront ancient DNA samples with modern genomic sequences as a means to understand the timing, strength, and interdependence of hybridization events that seem to permeate a subset of Iberian varieties and Western European varieties in general.

MATERIALS AND METHODS

Extended Materials and Methods are available in the Supplementary Materials and Methods.

Sampling, sequencing, and mapping

Vinifera varieties were sampled from two separate Portuguese germplasm collections (PORVID and UTAD), and *sylvestris* samples were collected in the southwestern region of the Iberian Peninsula. High-quality genomic DNA was used to produce polymerase chain reaction-free sequencing libraries followed by Illumina sequencing. Sequencing data from 37 additional genotypes from previous studies were also used. Information on genotypes and sequencing effort is summarized in table S1. Read quality filtering and trimming was performed with *FastQC* (www.bioinformatics.babraham.ac.uk/projects/fastqc/) and *Trimmomatic* (70). Reads were mapped to the *V. vinifera* PN40024 reference genome using *BWA-MEM* (71).

Population structure analysis

For PCA, we estimated genotype posterior probabilities using the ANGSD software package (16). The *ngsCovar* feature (*ngsPopGen* package) was used to compute the expected correlation matrix between individuals from genotype posterior probabilities. For the phylogenetic tree, the same genotype posterior probabilities were used to calculate pairwise genetic distances in *ngsDist* from *ngsTools*. We computed a distance-based minimal evolution tree by inputting the genetic distance matrix into *FastME* (www.atgc-montpellier.fr/fastme/) with 100 bootstraps for branch support. For ancestry analysis, we used *NgsAdmix* (www.popgen.dk/software/index.php). *NgsAdmix* was run assuming two to eight ancestral populations with the default minor allele frequency of 0.05.

Nucleotide diversity and genetic differentiation

Population genetics summary statistics (F_{ST} ; Watterson's Θ , θ_w ; π ; Tajima's D ; Fay and Wu's H) were also inferred under a probabilistic framework using ANGSD. *V. rotundifolia* (9) was used as the outgroup to polarize the ancestral state of alleles at each polymorphic site. All statistics were summarized across the genome using a sliding-window approach.

IBD estimation and SNP calling

To look at the relationship between different grape cultivars, we performed IBD analysis using the probabilistic methods implemented in ANGSD (16). We applied stringent criteria for the SNP call, with post-cutoff of 0.95 and an SNP P value of 1×10^{-9} , to include only highly supported SNPs. Subsequently, the SNPs were used to calculate IBD for all pairwise comparisons among the 100 samples using PLINK (72) and applying the following filters: maf 0.05 and qno 0.05.

Admixture test using Patterson's D statistic

Patterson's D statistics (or ABBA-BABA test) assumes three populations (P_1 , P_2 , and P_3) and one outgroup (O), which are

phylogenetically related as $((P_1, P_2), P_3), O$. Here, we estimated all permutations of the six groups of interest (W_{EAST} , W_{IBERIA} , C_{TABLE} , C_{WCE} , C_{WIB1} , and C_{WIB2}) as P_1 , P_2 , and P_3 . *V. rotundifolia* served as an outgroup (O). We computed Patterson's D statistic using allele frequencies instead of binary counts of fixed ABBA-BABA sites, as implemented in the *ABBABABA2* (*Multipopulation*) function in ANGSD (16), using nonoverlapping 20-Kbp windows. We calculated f^*_d to assess the fraction of the genome shared through introgression (25) in the comparison $P_1 = C_{WIB1}$, $P_2 = C_{WIB2}$, $P_3 = W_{IBERIA}$, and $O = V. rotundifolia$. We estimated $D(P_1, P_2, P_3, O)$ and $D(P_1, P_3, P_2, O)$ in ANGSD as previously described, which allowed us to obtain, for each genomic window, a donor population P_D (population with the higher frequency of the derived allele).

DCMS analysis of positive selection signatures

We calculated four separate statistics that differ in their approach to detect selection events based on the type of selection signals that are targeted: genetic differentiation (F_{ST}), shifts in the allele frequency spectrum of mutations [Delta Tajima's D (ΔTD) and Fay and Wu's H], and reduction in genetic diversity from pairwise nucleotide diversity measures (ROD). Statistics were based on F_{ST} , Tajima's D , Fay and Wu's H , and nucleotide diversity (π), calculated across the genome (100-Kbp windows, 50-kbp steps) as previously reported. DCMS was then used to summarize the four different statistics, taking the covariance of the statistics into account (29). Comparisons of interest were defined as those that confronted the W_{EAST} group with the remaining five groups. Genes of interest were considered for genomic windows above the 95th percentile of the distribution.

Analysis of genes of interest

Gene annotation was retrieved from PANTHER (www.pantherdb.org) and UniProtKB (www.uniprot.org/uniprot/). Also, for the 76 cross-referenced genes of interest, protein Fasta sequences were retrieved from UniProtKB and used to perform a BlastP search in NCBI (<https://blast.ncbi.nlm.nih.gov/Blast.cgi>), against the nonredundant protein sequences (nr) database, and the *Arabidopsis thaliana* RefSeq database. GO terms (GO biological process complete) were subjected to statistical overrepresentation testing in PANTHER.

SUPPLEMENTARY MATERIALS

Supplementary material for this article is available at <https://science.org/doi/10.1126/sciadv.abi8584>

[View/request a protocol for this paper from Bio-protocol.](#)

REFERENCES AND NOTES

1. P. This, T. Lacombe, M. R. Thomas, Historical origins and genetic diversity of wine grapes. *Trends Genet.* **22**, 511–519 (2006).
2. Z.-Y. Ma, J. Wen, S. M. Ickert-Bond, Z.-L. Nie, L.-Q. Chen, X.-Q. Liu, Phylogenomics, biogeography, and adaptive radiation of grapes. *Mol. Phylogenet. Evol.* **129**, 258–267 (2018).
3. D. Zohary, M. Hopf, E. Weiss, *Domestication of Plants in the Old World: The Origin and Spread of Domesticated Plants in Southwest Asia, Europe, and the Mediterranean Basin* (Oxford Univ. Press on Demand, 2012).
4. R. Arroyo-García, L. Ruiz-García, L. Bolling, R. Ocete, M. A. López, C. Arnold, A. Ergul, G. Söylemezoğlu, H. I. Uzun, F. Cabello, J. Ibáñez, M. K. Aradhya, A. Atanassov, I. Atanassov, S. Balint, J. L. Cenis, L. Costantini, S. Goris-Lavets, M. S. Grando, B. Y. Klein, P. E. McGovern, D. Merdinoglu, I. Pejic, F. Pelsy, N. Primikiriros, V. Risovannaya, K. A. Roubelakis-Angelakis, H. Snoussi, P. Sotiri, S. Tamhankar, P. This, L. Troshin, J. M. Malpica, F. Lefort, J. M. Martínez-Zapater, Multiple origins of cultivated grapevine (*Vitis vinifera* L. ssp. *sativa*) based on chloroplast DNA polymorphisms. *Mol. Ecol.* **15**, 3707–3714 (2006).
5. F. Grassi, M. Labra, S. Imazio, R. Ocete Rubio, O. Failla, A. Scienza, F. Sala, Phylogeographical structure and conservation genetics of wild grapevine. *Conserv. Genet.* **7**, 837–845 (2006).

6. S. Riaz, G. De Lorenzis, D. Velasco, A. Koehmstedt, D. Maghradze, Z. Bobokashvili, M. Musayev, G. Zdunic, V. Laucou, M. Andrew Walker, O. Failla, J. E. Preece, M. Aradhya, R. Arroyo-García, Genetic diversity analysis of cultivated and wild grapevine (*Vitis vinifera* L.) accessions around the Mediterranean basin and Central Asia. *BMC Plant Biol.* **18**, 137 (2018).
7. P. McGovern, M. Jalabadze, S. Batiuk, M. P. Callahan, K. E. Smith, G. R. Hall, E. Kavadze, D. Maghradze, N. Rusishvili, L. Bouby, O. Failla, G. Cola, L. Mariani, E. Boaretto, R. Bacilieri, P. This, N. Wales, D. Lordkipanidze, Early Neolithic wine of Georgia in the South Caucasus. *Proc. Natl. Acad. Sci. U.S.A.* **114**, E10309–E10318 (2017).
8. Z. Liang, S. Duan, J. Sheng, S. Zhu, X. Ni, J. Shao, C. Liu, P. Nick, F. Du, P. Fan, R. Mao, Y. Zhu, W. Deng, M. Yang, H. Huang, Y. Liu, Y. Ding, X. Liu, J. Jiang, Y. Zhu, S. Li, X. He, W. Chen, Y. Dong, Whole-genome resequencing of 472 *Vitis* accessions for grapevine diversity and demographic history analyses. *Nat. Commun.* **10**, 1190 (2019).
9. Y. Zhou, M. Massonnet, J. S. Sanjak, D. Cantu, B. S. Gaut, Evolutionary genomics of grape (*Vitis vinifera* ssp. *vinifera*) domestication. *Proc. Natl. Acad. Sci. U.S.A.* **114**, 11715–11720 (2017).
10. A. G. Reynolds, The grapevine, viticulture, and winemaking: A brief introduction, in *Grapevine Viruses: Molecular Biology, Diagnostics and Management* (Springer, 2017), pp. 3–29.
11. Y. Zhou, A. Muyle, B. S. Gaut, Evolutionary genomics and the domestication of grapes, in *The Grape Genome* (Springer, 2019), pp. 39–55.
12. H. P. Olmo, Origin and distribution of grapes, in *Evolution of Crop Plants*, N. W. Simmonds, Ed. (Longman, London and New York, 1976), pp. 294–298.
13. F. Grassi, M. Labra, S. Imazio, A. Spada, S. Sgorbati, A. Scienza, F. Sala, Evidence of a secondary grapevine domestication centre detected by SSR analysis. *Theor. Appl. Genet.* **107**, 1315–1320 (2003).
14. S. Myles, A. R. Boyko, C. L. Owens, P. J. Brown, F. Grassi, M. K. Aradhya, B. Prins, A. Reynolds, J.-M. Chia, D. Ware, C. D. Bustamante, E. S. Buckler, Genetic structure and domestication history of the grape. *Proc. Natl. Acad. Sci. U.S.A.* **108**, 3530–3535 (2011).
15. V. Laucou, A. Launay, R. Bacilieri, T. Lacombe, A.-F. Adam-Blondon, A. Bérard, A. Chauveau, M. T. de Andrés, L. Hausmann, J. Ibáñez, M.-C. Le Paslier, D. Maghradze, J. M. Martínez-Zapater, E. Maul, M. Ponnaiah, R. Töpfer, J.-P. Pérois, J.-M. Boursiquot, Extended diversity analysis of cultivated grapevine *Vitis vinifera* with 10K genome-wide SNPs. *PLOS ONE* **13**, e0192540 (2018).
16. T. S. Korneliussen, A. Albrechtsen, R. Nielsen, ANGSD: Analysis of next generation sequencing data. *BMC Bioinformatics* **15**, 356 (2014).
17. S. Y. Kim, K. E. Lohmueller, A. Albrechtsen, Y. Li, T. Korneliussen, G. Tian, N. Grarup, T. Jiang, G. Andersen, D. Witte, T. Jorgensen, T. Hansen, O. Pedersen, J. Wang, R. Nielsen, Estimation of allele frequency and association mapping using next-generation sequencing data. *BMC Bioinformatics* **12**, 231 (2011).
18. H. Li, A statistical framework for SNP calling, mutation discovery, association mapping and population genetical parameter estimation from sequencing data. *Bioinformatics* **27**, 2987–2993 (2011).
19. Y. Zhou, A. Minio, M. Massonnet, E. Solares, Y. Lv, T. Beridze, D. Cantu, B. S. Gaut, The population genetics of structural variants in grapevine domestication. *Nat. Plants* **5**, 965–979 (2019).
20. M. A. Gazda, P. Andrade, S. Afonso, J. Dilyte, J. P. Archer, R. J. Lopes, R. Faria, M. Carneiro, Signatures of selection on standing genetic variation underlie athletic and navigational performance in racing pigeons. *Mol. Biol. Evol.* **35**, 1176–1189 (2018).
21. K. P. Oh, C. L. Aldridge, J. S. Forbey, C. Y. Dadabay, S. J. Oyler-McCance, Conservation genomics in the Sagebrush Sea: Population divergence, demographic history, and local adaptation in sage-grouse (*Centrocercus* spp.). *Genome Biol. Evol.* **11**, 2023–2034 (2019).
22. Z. Migicovsky, J. Sawler, K. M. Gardner, M. K. Aradhya, B. H. Prins, H. R. Schwaninger, C. D. Bustamante, E. S. Buckler, G.-Y. Zhong, P. J. Brown, S. Myles, Patterns of genomic and phenomic diversity in wine and table grapes. *Hortic. Res.* **4**, 17035 (2017).
23. R. E. Green, J. Krause, A. W. Briggs, T. Maricic, U. Stenzel, M. Kircher, N. Patterson, H. Li, W. Zhai, M. H.-Y. Fritz, N. F. Hansen, E. Y. Durand, A.-S. Malaspina, J. D. Jensen, T. Marques-Bonet, C. Alkan, K. Prüfer, M. Meyer, H. A. Burbano, J. M. Good, R. Schultz, A. Aximu-Petri, A. Butthof, B. Höber, B. Höffner, M. Siegemund, A. Weihmann, C. Nusbaum, E. S. Lander, C. Russ, N. Novod, J. Affourtit, M. Egholm, C. Verna, P. Rudan, D. Brajkovic, Ž. Kucan, I. Gušić, V. B. Doronichev, L. V. Golovanova, C. Lalueza-Fox, M. de la Rasilla, J. Fortea, A. Rosas, R. W. Schmitz, P. L. F. Johnson, E. E. Eichler, D. Falush, E. Birney, J. C. Mullikin, M. Slatkin, R. Nielsen, J. Kelso, M. Lachmann, D. Reich, S. Pääbo, A draft sequence of the Neanderthal genome. *Science* **328**, 710–722 (2010).
24. S. Wright, The genetical structure of populations. *Ann. Eugen.* **15**, 323–354 (1951).
25. S. H. Martin, J. W. Davey, C. D. Jiggins, Evaluating the use of ABBA–BABA statistics to locate introgressed loci. *Mol. Biol. Evol.* **32**, 244–257 (2015).
26. T. Kuromori, M. Seo, K. Shinozaki, ABA transport and plant water stress responses. *Trends Plant Sci.* **23**, 513–522 (2018).
27. J. Santiago, F. Dupeux, A. Round, R. Antoni, S.-Y. Park, M. Jamin, S. R. Cutler, P. L. Rodriguez, J. A. Márquez, The abscisic acid receptor PYR1 in complex with abscisic acid. *Nature* **462**, 665–668 (2009).
28. H. Fernandes, K. Michalska, M. Sikorski, M. Jaskolski, Structural and functional aspects of PR-10 proteins. *FEBS J.* **280**, 1169–1199 (2013).
29. Y. Ma, X. Ding, S. Qanbari, S. Weigend, Q. Zhang, H. Simianer, Properties of different selection signature statistics and a new strategy for combining them. *Heredity* **115**, 426–436 (2015).
30. C. Burgarella, A. Barnaud, N. A. Kane, F. Jankowski, N. Scarcelli, C. Billot, Y. Vigouroux, C. Berthouly-Salazar, Adaptive introgression: An untapped evolutionary mechanism for crop adaptation. *Front. Plant Sci.* **10**, 4 (2019).
31. G. M. Janzen, L. Wang, M. B. Hufford, The extent of adaptive wild introgression in crops. *New Phytol.* **221**, 1279–1288 (2019).
32. A. Sivan, O. Rahimi, B. Lavi, M. Salmon-Divon, E. Weiss, E. Drori, S. Hübner, Genomic evidence supports an independent history of Levantine and Eurasian grapevines. *Plants People Planet* **3**, 414–427 (2021).
33. M. S. Lopes, D. Mendonça, M. Rodrigues dos Santos, J. E. Eiras-Dias, A. da Câmara Machado, New insights on the genetic basis of Portuguese grapevine and on grapevine domestication. *Genome* **52**, 790–800 (2009).
34. G. De Lorenzis, F. Mercati, C. Bergamini, M. F. Cardone, A. Lupini, A. Mauceri, A. R. Caputo, L. Abbate, M. G. Barbagallo, D. Antonacci, F. Sunseri, L. Brancadoro, SNP genotyping elucidates the genetic diversity of *Magna Graecia* grapevine germplasm and its historical origin and dissemination. *BMC Plant Biol.* **19**, 7 (2019).
35. G. Zdunic, J. E. Preece, M. Aradhya, D. Velasco, A. Koehmstedt, G. S. Dangl, Genetic diversity and differentiation within and between cultivated (*Vitis vinifera* L. ssp. *sativa*) and wild (*Vitis vinifera* L. ssp. *sylvestris*) grapes. *Vitis* **52**, 29–32 (2013).
36. J. Cunha, M. Teixeira Santos, L. Carneiro, P. Feveiro, J. E. Eiras-Dias, Portuguese traditional grapevine cultivars and wild vines (*Vitis vinifera* L.) share morphological and genetic traits. *Genet. Resour. Crop Evol.* **56**, 975–989 (2009).
37. M. T. De Andrés, A. Benito, G. Pérez-Rivera, R. Ocete, M. A. Lopez, L. Gaforio, G. Muñoz, F. Cabello, J. M. Martínez-Zapater, R. Arroyo-García, Genetic diversity of wild grapevine populations in Spain and their genetic relationships with cultivated grapevines. *Mol. Ecol.* **21**, 800–816 (2012).
38. R. De Michele, F. La Bella, A. S. Gristina, I. Fontana, D. Pacifico, G. Garfi, A. Motisi, D. Crucitti, L. Abbate, F. Carimi, Phylogenetic relationship among wild and cultivated grapevine in Sicily: A hotspot in the middle of the Mediterranean Basin. *Front. Plant Sci.* **10**, 1506 (2019).
39. J. Cunha, J. Ibáñez, M. Teixeira-Santos, J. Brazão, P. Feveiro, J. M. Martínez-Zapater, J. E. Eiras-Dias, Genetic relationships among Portuguese cultivated and wild *Vitis vinifera* L. Germplasm. *Front. Plant Sci.* **11**, 127 (2020).
40. V. Maraš, J. Tello, A. Gazivoda, M. Mugoša, M. Perišić, J. Raičević, N. Štajner, R. Ocete, V. Božović, T. Popović, E. García-Escudero, M. Grbić, J. M. Martínez-Zapater, J. Ibáñez, Population genetic analysis in old Montenegrin vineyards reveals ancient ways currently active to generate diversity in *Vitis vinifera*. *Sci. Rep.* **10**, 15000 (2020).
41. J. Ramos-Madrigal, A. K. W. Runge, L. Bouby, T. Lacombe, J. A. S. Castruita, A.-F. Adam-Blondon, I. Figueiral, C. Hallavant, J. M. Martínez-Zapater, C. Schaal, R. Töpfer, B. Petersen, T. Sicheritz-Pontén, P. This, R. Bacilieri, M. T. P. Gilbert, N. Wales, Palaeogenomic insights into the origins of French grapevine diversity. *Nat. Plants* **5**, 595–603 (2019).
42. J. Cunha, J. Ibáñez, M. Teixeira-Santos, J. Brazão, P. Feveiro, J. M. Martínez-Zapater, J. E. Eiras-Dias, Characterisation of the Portuguese grapevine germplasm with 48 single-nucleotide polymorphisms. *Aust. J. Grape Wine Res.* **22**, 504–516 (2016).
43. M. J. Iriarte-Chiapusso, C. A. Ocete-Pérez, B. Hernández-Beloqui, R. Ocete-Rubio, *Vitis vinifera* in the Iberian Peninsula: A review. *Plant Biosyst.* **151**, 245–257 (2017).
44. L. Bouby, I. Figueiral, A. Bouchette, N. Rovira, S. Ivorra, T. Lacombe, T. Pastor, S. Picq, P. Marinval, J.-F. Terral, Bioarchaeological insights into the process of domestication of grapevine (*Vitis vinifera* L.) during Roman times in Southern France. *PLOS ONE* **8**, e63195 (2013).
45. M. K. Aradhya, G. S. Dangl, B. H. Prins, J.-M. Boursiquot, M. A. Walker, C. P. Meredith, C. J. Simon, Genetic structure and differentiation in cultivated grape *Vitis vinifera* L. *Genet. Res.* **81**, 179–192 (2003).
46. C. D'Onofrio, Introgression among cultivated and wild grapevine in Tuscany. *Front. Plant Sci.* **11**, 202 (2020).
47. W. De Coster, M. H. Weissensteiner, F. J. Sedlazeck, Towards population-scale long-read sequencing. *Nat. Rev. Genet.* **9**, 572–587 (2011).
48. H. Badouin, A. Velt, F. Gindraud, T. Flutre, V. Dumas, S. Vautrin, W. Marande, J. Corbi, E. Sallet, J. Ganofsky, S. Santoni, D. Guyot, E. Ricciardelli, K. Jepsen, J. Kafer, H. Berges, E. Duchene, F. Picard, P. Huguency, R. Tavares, R. Bacilieri, C. Rustenholz, G. A. B. Marais, The wild grape genome sequence provides insights into the transition from dioecy to hermaphroditism during grape domestication. *Genome Biol.* **21**, 223 (2020).
49. A. Yu, Y. Xie, X. Pan, H. Zhang, P. Cao, X. Su, W. Chang, M. Li, Photosynthetic phosphoribulokinase structures: Enzymatic mechanisms and the redox regulation of the Calvin-Benson-Bassham cycle. *Plant Cell* **32**, 1556–1573 (2020).
50. M. B. Hufford, P. Lubinsky, T. Pyhajarvi, M. T. Devengeno, N. C. Ellstrand, J. Ross-Ibarra, The genomic signature of crop-wild introgression in maize. *PLOS Genet.* **9**, e1003477 (2013).
51. M. A. Hardigan, F. P. E. Laimbeer, L. Newton, E. Crisovan, J. P. Hamilton, B. Vaillancourt, K. Wiegert-Rininger, J. C. Wood, D. S. Douches, E. M. Farré, R. E. Veilleux, C. R. Buell, Genome diversity of tuber-bearing *Solanum* uncovers complex evolutionary history

- and targets of domestication in the cultivated potato. *Proc. Natl. Acad. Sci. U.S.A.* **114**, E9999–E10008 (2017).
52. S. Rivas-Martínez, Á. Penas, S. del Río, T. E. D. González, S. Rivas-Sáenz, Bioclimatology of the Iberian Peninsula and the Balearic Islands, in *The Vegetation of the Iberian Peninsula* (Springer, 2017), pp. 29–80.
 53. Q. Lin, J. Yang, Q. Wang, H. Zhu, Z. Chen, Y. Dao, K. Wang, Overexpression of the trehalose-6-phosphate phosphatase family gene *AtTPPF* improves the drought tolerance of *Arabidopsis thaliana*. *BMC Plant Biol.* **19**, 381 (2019).
 54. S. Rattanakon, R. Ghan, G. A. Gambetta, L. G. Deluc, K. A. Schlauch, G. R. Cramer, Abscisic acid transcriptomic signaling varies with grapevine organ. *BMC Plant Biol.* **16**, 72 (2016).
 55. T. Kuromori, T. Miyaji, H. Yabuuchi, H. Shimizu, E. Sugimoto, A. Kamiya, Y. Moriyama, K. Shinozaki, ABC transporter AtABC25 is involved in abscisic acid transport and responses. *Proc. Natl. Acad. Sci. U.S.A.* **107**, 2361–2366 (2010).
 56. J. C. Isner, A. Begum, T. Nuehse, A. M. Hetherington, F. J. Maathuis, KIN7 kinase regulates the vacuolar TPK1 K⁺ channel during stomatal closure. *Curr. Biol.* **28**, 466–472.e4 (2018).
 57. C. D. M. Castroverde, The AREB1-ADA2b-GCN5 complex regulates gene expression during drought stress. *Plant Cell* **31**, 559–560 (2019).
 58. S. E. Murthy, A. E. Dubin, T. Whitwam, S. Jojoa-Cruz, S. M. Cahalan, S. A. R. Mousavi, A. B. Ward, A. Patapoutian, OSCA/TMEM63 are an evolutionarily conserved family of mechanically activated ion channels. *eLife* **7**, e41844 (2018).
 59. K. Thor, S. Jiang, E. Michard, J. George, S. Scherzer, S. Huang, J. Dindas, P. Derbyshire, N. Leitão, T. A. DeFalco, P. Köster, K. Hunter, S. Kimura, J. Gronnier, L. Stransfeld, Y. Kadota, C. A. Bücherl, M. Charpentier, M. Wrzacek, D. MacLean, G. E. D. Oldroyd, F. L. H. Menke, M. R. G. Roelfsema, R. Hedrich, J. Feijó, C. Zipfel, The calcium-permeable channel OSCA1.3 regulates plant stomatal immunity. *Nature* **585**, 569–573 (2020).
 60. A. C. Vlot, J. H. Sales, M. Lenk, K. Bauer, A. Brambilla, A. Sommer, Y. Chen, M. Wenig, S. Nayem, Systemic propagation of immunity in plants. *New Phytol.* **229**, 1234–1250 (2021).
 61. E. Sinapidou, K. Williams, L. Nott, S. Bahkt, M. Tör, I. Crute, P. Bittner-Eddy, J. Beynon, Two TIR-NB-LRR genes are required to specify resistance to *Peronospora parasitica* isolate Cala2 in *Arabidopsis*. *Plant J.* **88**, 989–909 (2004).
 62. R. Ocete, P. Feveireiro, O. Failla, Proposal for the wild grapevine (*Vitis vinifera* L. subsp. *sylvestris* (Gmelin) Hegi) conservation in the European countries. *Vitis* **54**, 281–282 (2015).
 63. E. Warschewsky, R. V. Penmetsa, D. R. Cook, E. J. B. von Wettberg, Back to the wilds: Tapping evolutionary adaptations for resilient crops through systematic hybridization with crop wild relatives. *Am. J. Bot.* **101**, 1791–1800 (2014).
 64. P. E. McGovern, *Ancient Wine: The Search for the Origins of Viticulture* (Princeton Univ. Press, Princeton, NJ, 2003).
 65. J. E. Aura, Y. Carrión, E. Estrelles, G. P. Jordá, Plant economy of hunter-gatherer groups at the end of the last Ice Age: Plant macroremains from the cave of Santa Maira (Alacant, Spain) ca. 12000–9000 BP. *Veget. Hist. Archaeobot.* **14**, 542–550 (2005).
 66. M. Lara, M. J. Iriarte-Chiapuso, M. Cantos, J. L. García Jiménez, R. Morales, C. A. Ocete, M. Á. López, J. A. Salinas, I. Rubio, J. Hidalgo, M. Iñiguez, A. Rodríguez, J. M. Valle, R. Arroyo-García, M. C. Ayala, I. Armendáriz, D. Maghradze, C. Arnold, R. Ocete, La vid silvestre. Un importante recurso fitogenético sin protección legal en España. *Rev. Iberoam. Vitic. Agroind. Y Rural.* **4**, 46–68 (2017).
 67. G. Pérez-Jordá, L. Peña-Chocarro, S. Pardo-Gordó, Fruits arriving to the west. Introduction of cultivated fruits in the Iberian Peninsula. *J. Archaeol. Sci. Rep.* **35**, 102683 (2021).
 68. S. Boso, P. Gago, J. L. Santiago, A. Teira-Brión, M. Martín-Seijo, J. Rey-Castañeira, R. Ocete, C. Ocete, M. C. Martínez, Morphometric comparison of current, Roman-era and medieval *Vitis* seeds from the north-west of Spain. *Aust. J. Grape Wine Res.* **26**, 300–309 (2020).
 69. R. Fernandes, A. J. M. Barros, *Descrição do terreno ao redor de Lamego duas léguas: 1531–1532* (Caleidoscópio — Edição e Artes Gráficas, Casal de Cambra, 2012).
 70. A. M. Bolger, M. Lohse, B. Usadel, Trimmomatic: A flexible trimmer for Illumina sequence data. *Bioinformatics* **30**, 2114–2120 (2014).
 71. H. Li, R. Durbin, Fast and accurate short read alignment with Burrows-Wheeler transform. *Bioinformatics* **25**, 1754–1760 (2009).
 72. S. Purcell, B. Neale, K. Todd-Brown, L. Thomas, M. A. R. Ferreira, D. Bender, J. Maller, P. Sklar, P. I. W. de Bakker, M. J. Daly, P. C. Sham, PLINK: A tool set for whole-genome association and population-based linkage analyses. *Am. J. Hum. Genet.* **81**, 559–575 (2007).
 73. F. G. Vieira, F. Lassalle, T. S. Korneliusen, M. Fumagalli, Improving the estimation of genetic distances from next-generation sequencing data. *Biol. J. Linn. Soc.* **117**, 139–149 (2016).
 74. M. Fumagalli, F. G. Vieira, T. S. Korneliusen, T. Linderroth, E. Huerta-Sanchez, A. Albrechtsen, R. Nielsen, Quantifying population genetic differentiation from next-generation sequencing data. *Genetics* **195**, 979–992 (2013).
 75. M. Fumagalli, F. G. Vieira, T. Linderroth, R. Nielsen, ngsTools: Methods for population genetics analyses from next-generation sequencing data. *Bioinformatics* **30**, 1486–1487 (2014).
 76. V. Lefort, R. Desper, O. Gascuel, FastME 2.0: A comprehensive, accurate, and fast distance-based phylogeny inference program. *Mol. Biol. Evol.* **32**, 2798–2800 (2015).
 77. L. Skotte, T. S. Korneliusen, A. Albrechtsen, Estimating individual admixture proportions from next generation sequencing data. *Genetics* **195**, 693–702 (2013).
 78. R. Nielsen, T. Korneliusen, A. Albrechtsen, Y. Li, J. Wang, SNP calling, genotype calling, and sample allele frequency estimation from new-generation sequencing data. *PLOS ONE* **7**, e37558 (2012).
 79. T. S. Korneliusen, I. Moltke, A. Albrechtsen, R. Nielsen, Calculation of Tajima's D and other neutrality test statistics from low depth next-generation sequencing data. *BMC Bioinformatics* **14**, 289 (2013).
 80. G. A. Watterson, On the number of segregating sites in genetical models without recombination. *Theor. Popul. Biol.* **7**, 256–276 (1975).
 81. M. Nei, W. H. Li, Mathematical model for studying genetic variation in terms of restriction endonucleases. *Proc. Natl. Acad. Sci. U.S.A.* **76**, 5269–5273 (1979).
 82. F. Tajima, Statistical method for testing the neutral mutation hypothesis by DNA polymorphism. *Genetics* **123**, 585–595 (1989).
 83. J. C. Fay, C. I. Wu, Hitchhiking under positive Darwinian selection. *Genetics* **155**, 1405–1413 (2000).
 84. J. M. Flowers, K. M. Hazzouri, M. Gros-Balthazard, Z. Mo, K. Koutroumpa, A. Perrakis, S. Ferrand, H. S. M. Khierallah, D. Q. Fuller, F. Aberlenc, C. Fournarakis, M. D. Purugganan, Cross-species hybridization and the origin of North African date palms. *Proc. Natl. Acad. Sci. U.S.A.* **116**, 1651–1658 (2019).
 85. S. R. Grossman, I. Shlyakhter, E. K. Karlsson, E. H. Byrne, S. Morales, G. Frieden, E. Hostetter, E. Angelino, M. Garber, O. Zuk, E. S. Lander, S. F. Schaffner, P. C. Sabeti, A composite of multiple signals distinguishes causal variants in regions of positive selection. *Science* **327**, 883–886 (2010).
 86. H. Innan, Y. Kim, Detecting local adaptation using the joint sampling of polymorphism data in the parental and derived populations. *Genetics* **179**, 1713–1720 (2008).
 87. G. F. Templeton, A two-step approach for transforming continuous variables to normal: Implications and recommendations for IS research. *Comm Assoc Info Syst* **28**, 41–58 (2011).
 88. H. Mi, A. Muruganujan, X. Huang, D. Ebert, C. Mills, X. Guo, P. D. Thomas, Protocol Update for large-scale genome and gene function analysis with the PANTHER classification system (v. 14.0). *Nat. Protoc.* **14**, 703–721 (2019).
 89. F. Cabanettes, C. Klopp, D-GENIES: Dot plot large genomes in an interactive, efficient and simple way. *PeerJ* **6**, e4958 (2018).
 90. M. F. Cardone, P. D'Addabbo, C. Alkan, C. Bergamini, C. R. Catacchio, F. Anaclerio, G. Chiantate, A. Marra, G. Giannuzzi, R. Perniola, M. Ventura, D. Antonacci, Inter-varietal structural variation in grapevine genomes. *Plant J.* **88**, 648–661 (2016).
 91. A. Di Genova, A. M. Almeida, C. Muñoz-Espinoza, P. Vizoso, D. Travisany, C. Moraga, M. Pinto, P. Hinrichsen, A. Orellana, A. Maass, Whole genome comparison between table and wine grapes reveals a comprehensive catalog of structural variants. *BMC Plant Biol.* **14**, 7 (2014).

Acknowledgments

Funding: This work was funded by national funds through Fundação para a Ciência e a Tecnologia (FCT), I.P., within the scope of project GrapeVision grant ref. PTDC/BIA-FBT/2389/2020, as well as Programa Operacional Regional do Norte (NORTE2020) through Fundo Europeu de Desenvolvimento Regional (FEDER) for grant ref. NORTE-01-0145-FEDER-000007. We also acknowledge FCT and Portuguese MCTES, as well as Programa Operacional Capital Humano (POCH) and NORTE 2020 through Fundo Social Europeu (FSE), for support to S.F. (SFRH/BD/120020/2016) and M.A.G. (PD/BD/114042/2015) within the scope of the Biodiversity, Genetics, and Evolution (BIODIV) PhD program; FCT/MCTES and POCH/FSE for support to A.J.M.-P. (SFRH/BPD/111015/2015); FCT/MCTES for support to C.V.-V. (PD/BD/52607/2014) within the scope of the Biodiversity, Genetics, and Evolution (BIODIV) PhD program; FCT/MCTES, FEDER, and COMPETE—POCI—Programa Operacional Competitividade e Internacionalização for support to P.H.C. (PTDC/BAA-AGR/31122/2017 and POCI-01-0145-FEDER-031122); FCT/MCTES through POPH-QREN funds from FSE for support to M.C. (CEECINST/00014/2018/CP1512/CT0002); and FCT/MCTES for support to I.C. (UIDB/04033/2020) and H.A. (CEECIND/00399/2017/CP1423/CT0004). **Author contributions:** H.A. and M.C. conceived the study with input from M.S., A.B.-P., N.F., E.G., and A.M. H.A. coordinated the study. S.F., M.A.G., M.Á.R., L.M.G., D.A.-S., and S.A. performed the research. S.F., M.A.G., M.Á.R., A.J.M.-P., A.M.-M., L.M.G., D.A.-S., P.H.C., M.S., and J.T. analyzed and/or interpreted the data. S.F., M.A.G., M.Á.R., and H.A. performed data visualization. E.G., A.M., I.C., and C.V.-V. provided resources. H.A., M.C., and S.F. wrote the paper with input from all the other authors. All authors approved the manuscript before submission. **Competing interests:** The authors declare that they have no competing interests. **Data and materials availability:** All data needed to evaluate the conclusions in the paper are present in the paper and/or the Supplementary Materials.

Submitted 19 April 2021

Accepted 1 October 2021

Published 19 November 2021

10.1126/sciadv.abi8584

Pervasive hybridization with local wild relatives in Western European grapevine varieties

Sara Freitas, Ma#gorzata A. Gazda, Miguel Â. Rebelo, Antonio J. Muñoz-Pajares, Carlos Vila-Viçosa, Antonio Muñoz-Mérida, Luís M. Gonçalves, David Azevedo-Silva, Sandra Afonso, Isaura Castro, Pedro H. Castro, Mariana Sottomayor, Albano Beja-Pereira, João Tereso, Nuno Ferrand, Elsa Gonçalves, Antero Martins, Miguel Carneiro, and Herlander Azevedo

Sci. Adv. 7 (47), eabi8584. DOI: 10.1126/sciadv.abi8584

View the article online

<https://www.science.org/doi/10.1126/sciadv.abi8584>

Permissions

<https://www.science.org/help/reprints-and-permissions>

Use of this article is subject to the [Terms of service](#)

Science Advances (ISSN 2375-2548) is published by the American Association for the Advancement of Science. 1200 New York Avenue NW, Washington, DC 20005. The title *Science Advances* is a registered trademark of AAAS.

Copyright © 2021 The Authors, some rights reserved; exclusive licensee American Association for the Advancement of Science. No claim to original U.S. Government Works. Distributed under a Creative Commons Attribution NonCommercial License 4.0 (CC BY-NC).