

The impact of geometric and land use elements on the perceived pleasantness of urban layouts

EPB: Urban Analytics and City Science
2023, Vol. 50(3) 740–756
© The Author(s) 2022



Article reuse guidelines:
sagepub.com/journals-permissions
DOI: 10.1177/23998083221129879
journals.sagepub.com/home/epb



Nuno Sousa

Institute for Systems Engineering and Computers of Coimbra (INESCC), Coimbra, Portugal
Department of Sciences and Technology, Universidade Aberta, Lisbon, Portugal

João Monteiro

Research Centre for Territory, Transports and Environment (CITTA), Porto, Portugal

Eduardo Natividade-Jesus

Institute for Systems Engineering and Computers of Coimbra (INESCC), Coimbra, Portugal
Department of Civil Engineering, Polytechnic Institute of Coimbra, Coimbra, Portugal

João Coutinho-Rodrigues

Institute for Systems Engineering and Computers of Coimbra (INESCC), Coimbra, Portugal
Department of Civil Engineering, University of Coimbra, Coimbra, Portugal

Abstract

This article presents a model to estimate the impact of geometric and land use elements on citizens' perception of urban layout pleasantness. An ordinal regression cumulative link mixed model with those elements as regressors is proposed and calibrated using data from an online survey. Results show that landscape building height and density of green areas are the factors that most impact the perception of pleasantness. Based on the model, a methodology to derive pleasantness mean scores for a city is also proposed and applied to a case study. The methodology allows for benchmarking the pleasantness of different cities or comparing neighborhoods within a city. It can be used both as an urban evaluation tool and a decision-aid for city expansion programs.

Keywords

Urban pleasantness, urban environment, logistic regression, city planning

Corresponding author:

João Coutinho-Rodrigues, Department of Civil Engineering, University of Coimbra, Polo II Univ Coimbra, Coimbra 3030-790, Portugal.

Email: coutinho@dec.uc.pt

Introduction

Over the course of history, social movements have led people to cities, making these the prime human habitat they are today. There are many reasons why these movements occur, such as economic factors (e.g. job opportunities), social factors (e.g. urban vibrancy), or accessibility (to have interaction opportunities nearby) (Bruinsma and Rietveld, 1998; Cullen and Levitt, 1999; Handy, 2002; Jacobs, 1961; Maher, 1994; Marantz, 2019; Meng and Xing, 2019; Riffat et al., 2016; Tallen, 1999). Living in an urban environment provides citizens with all these benefits, but the urban landscape may not coincide with what people consider a pleasant physical environment. Therefore, the question arises of knowing which factors affect a person's perceived pleasantness of the urban layout, in particular, how landscape elements impact that perception. The aim of this research is to try and respond to the latter question in a quantitative manner, based on objective aspects of geometric and land use elements. Note that the term "urban layout" is understood as a synonym for what Lynch (1960) defines as "settlement form" or "physical environment", that is, the spatial pattern of permanent physical objects in a city.

Research about human perception of the built environment has been the focus of studies in the areas of spatial planning, architecture, and environmental psychology (Alexander et al., 1977; Cullen, 1961; Jacobs, 1995). More recently, research was done focusing on more specific, but subjective aspects, such as the aesthetic of tall buildings on the urban landscape (Yaran, 2016), the aesthetical cognitive perception of urban street form (D'Acci, 2019), the beauty of urban settings considering four different domains: walkability, historical character, size and order, and greenness (Calafiore, 2020), perceptions of the rural–urban fringe (Sullivan, 1994), the relation between perceived environmental aesthetics and walking for exercise (Ball et al., 2001; Humpel et al., 2003), the perception of parks and urban dereliction (Hofmann et al., 2012), and the effect of urban landscape on urban vitality (Zhang et al., 2021). Empirical studies on pleasantness perception in response to geometric and land use elements were presented by Lynch (1960) and Stamps (1998), but only at a qualitative level. Recent quantitative work exists, but at the street level. Examples are Li et al. (2021), who studied the quality of street space using logit models, street views, and expert validation, and Ye et al. (2019), who used machine learning techniques to evaluate the visual quality of streets. Of the quantitative studies, only Calafiore (2020) and Li et al. (2021) used field data to obtain a pleasantness indicator, respectively, a beauty index and a street quality index. Quantitative work exists on the impact of isolated geometric elements on pleasantness (Asgarzadeh et al., 2012; D'Acci, 2014; Lee, 2021; Wang et al., 2021), but none of these works have evaluated the combined landscape at the neighborhood scale. Thus, the literature on quantitative evaluation of layout pleasantness is very much in its infancy.

This article contributes to the state-of-the-art on evaluation of citizen perception of urban layout pleasantness by proposing a quantitative methodology to estimate that perception, based on a statistical model with geometric and land use elements as explanatory variables. The model was calibrated from the results of a worldwide online survey, in which participants looked at images of city neighborhoods from around the globe and were asked to score, on a 1–5 Likert scale, how pleasant it would be for them to live in each neighborhood. To the best of the authors' knowledge, this is the first time a model is proposed to provide quantitative insights on the impact of landscape elements on the perceived pleasantness of the urban environment. It also fits the research framework of Mouratidis (2021), who advocated for a better understanding of the links between the built environment and subjective well-being.

The model was applied to the mid-size city of Coimbra, Portugal, for which neighborhood pleasantness scores were obtained and used to estimate the global layout pleasantness of the city. This case study demonstrates the usability of the methodology on a large scale and shows that it can

be used by local authorities to better plan their urban environment with an aim at citizen pleasantness and overall quality of life. This is especially useful for city expansion programs, as it can help predict the attractiveness of the various urban architectural layouts which may be under consideration.

Methodology

The methodology is based on the premise that different geometric and land use characteristics lead to different perceptions of pleasantness. People may, on average, enjoy, for example, open spaces with lots of green areas more than compact layouts with tall buildings. These perception differences have both objective and subjective aspects and are subject to random fluctuations, coming mostly from the latter aspects. Statistical modeling approaches are designed to deal with this randomness and capture the underlying trends that relate the explanatory and response variables. Such an approach is therefore necessary to relate the landscape elements (explanatory variables) to human perception (response variable), disentangling as much as possible the objective aspects of this relation from the subjective ones. A model of statistical quality can then form the basis for predictive analyses of new contexts.

Geometric and land use elements evaluated

To act as explanatory variables, landscape elements must be objective and measurable. This requires putting aside more subjective aspects, such as architectural beauty or building conservation status. The set of explanatory variables was thus restricted to geometric and land use elements and is presented in [Table 1](#). These variables are to be evaluated on a neighborhood basis. The survey contained an open question whose answers were used to verify that the elements of [Table 1](#) adequately reflected items looked at in rater judgment. See the survey section for details.

Table 1. Geometric and land use elements evaluated.

Variable	Definition	Measurement unit	Scale	Level
Green area	Publicly available green area in the study neighborhood	Percentage (%)	0 – 5 6 – 25 26 – 60 > 61	None Small Medium High
Street width	Average street width, including cycle lanes, parking space and sidewalks	Meters (m)	0 – 8 9 – 18 > 19	Narrow Wide Very wide
Nr. of floors	Average floor number of all buildings in the study neighborhood	Integer	1 – 2 3 – 5 6 – 11 12 – 37 > 38	House Short Medium Tall Skyscraper
Building distance	Average building side setbacks	Meters (m)	0 1 – 14 > 15	Compact Spaced Sprawled
Green private area	Average private green area	Square meters (m ²)	0 – 10 > 11	Not relevant Backyard

Evaluation of the elements in a neighborhood is made on the measurement unit indicated. When added to the dataset, measured values are transformed into a categorical value using the scale of [Table 1](#). This transformation allows for identification of push-pull effects, such as people preferring, for example, wide streets to narrow or very wide ones, an effect that would not be detectable using the raw measured values. It is also more intuitive and improves the calculational convergence of the statistical models. In defining the scale levels, street width and building distance guidelines of municipal and national authorities were considered ([Dft, 2007](#); [GovDC, 2019](#); [IDoTTS, 2013](#); [SDT, 2000](#)). Similar standards for number of floors differ according to city and country ([The BIM, 2018](#)). The chosen scale was based on a combination of those standards. For green area and green private area, no standards were found, so the scale was based on the authors' judgment.

Other landscape elements were considered besides those in [Table 1](#). However, a principal component analysis run on survey image data revealed those extra elements were highly correlated to existing ones and were therefore discarded to avoid perturbations in the statistical models.

Survey design

The survey was carried out on the Lime Survey online platform and consisted of 25 urban landscape images which the subjects rated, a demographic questionnaire and an open question. The survey's online character allowed for fast dissemination and wide reach over social media, and ease of access. The opportunity to show images from cities all around the world and the diversified participant pool, with people of different backgrounds and cultures, reduces biases and strengthens the universality of the study. The use of images for surveys related to urban planning is well documented in the literature ([Candeia et al., 2017](#); [D'Acci, 2019](#); [Hofmann et al., 2012](#); [Li et al., 2021](#); [Rijswijk et al., 2016](#); [Sussman et al., 2021](#); [Weinberger et al., 2021](#); [Wergles and Muhar, 2009](#)). The decision to show only 25 pictures was made to keep completion time to a maximum of 10 min, a time frame recommended by [Galesic and Bosnjak \(2009\)](#) and [Revilla and Ochoa \(2017\)](#).

Demographics. The demographic questionnaire gathered subject age, gender, the type of area where the subject grew up in, and the type of area they currently live in. Possible area types were rural, urban, and rural-urban mix, that is, the fringe between rural and urban zones. Discrimination by area type allows for separate analyses based on subject past and present life experience.

Images. Images from 25 urban neighborhoods from around the world were taken from Google Earth. In the selection, variety was sought-after, from dense skyscraper landscapes to quiet-looking neighborhoods of one-story homes, to have enough representatives of all scale levels of [Table 1](#) variables and a full spectrum of characteristics that would be possible, for most subjects, to find in their own cities and neighborhoods. Images were presented to the subject in a bird's-eye view, as street views cannot capture full pictures of a neighborhood and its surroundings. All images showed well-cared for neighborhoods, so that subjective factors such as, for example, building or street degradation would not bias the subject towards lower scores. The study area of each settlement represented in the images is circa 80,000 m², a land plot size chosen having in mind the traditional neighborhood walkability range of a quarter mile (400 m) ([Yang and Diez-Roux, 2012](#)). The set of images used and statistics on their geometric and land use elements can be found in the [Supplementary Material](#).

Subjects were asked whether they would like to live in the urban settlements presented on each image and gave their answers on a Likert scale of 1–5, with 1 as “definitely would not like to live here” and 5 “definitely would like to live here.” They were also asked to try and abstain as much as possible from considering building aesthetics or proximity to shops and services (accessibility) from their evaluation. Before the start of the survey, subjects were given the opportunity to view all the

pictures at the same time, to both create a sense of comparison and reduce sequence biases from showing similar images in blocks. The geometric and land use elements under scrutiny were not disclosed to the participants.

Open question. The open question was optional and asked each subject to disclose any particular aspects that they took into consideration in their evaluation of the images. This last question was meant to validate whether the geometric and land use elements of [Table 1](#) were actually being looked at by the subjects. The answers were analyzed by a natural language processing machine learning algorithm, translating to English where needed, and in general confirmed the variables' adequacy (see also section CLMM for geometric and land use elements). Some participants mentioned elements other than those of [Table 1](#), but they were not general enough (e.g. proximity to water fronts) or not suitable for the methodology (e.g. not quantifiable), so none were added.

Statistical model

The choice of a statistical model is dictated by the nature of the explanatory and response variables and the aim of the study. The perception of urban layout pleasantness (response) is assumed to be formed by a combination of the five geometric and land use elements (explanatory variables) modulo a statistical error. The statistical link between a response variable of discrete ordinal nature and explanatory variables of categorical nature can be expressed by a logistic regression model. In addition, the subject introduces a random factor that represents an overall more optimistic or pessimistic view by the person rating the images. A cumulative link mixed model (CLMM) was selected for the approach, with logit link function and unstructured thresholds. This model is defined by [Tutz and Hennevogl \(1996\)](#) with the notation adapted for clarity as

$$\text{logit}[P(Y_i \leq j)] = \theta_j - \sum_k \beta_k X_{ki} - u_i, \text{logit } p = \ln\left(\frac{p}{1-p}\right), \quad (1)$$

$$i = 1, \dots, N, j = 1, \dots, J - 1, k = 1, \dots, K$$

which represents the cumulative probability of the i -th rating falling in the j -th level of the response variable or below. The θ_j are threshold coefficients for the response variable, β_{ki} are regression coefficients for the k explanatory variables, X_{ki} is the value of k in observation i , and u_i the random effect of the person rating observation i , whose distribution is assumed $u \sim N(0, \sigma)$. CLMM allow for both quantitative and categorical explanatory variables and have been used in other research on urban analytics ([Li et al., 2021](#); [Rayaprolu et al., 2020](#)). Calculations were carried out using the R software ordinal package ([Christensen, 2019](#)).

Results and discussion

The survey was broadcast worldwide on social media for a period of 4 months, having obtained 1327 validated replies. [Table 2](#) summarizes the sample demographics.

[Table 2](#) shows that older age groups and females may be under-represented in the sample. However, a CLMM with age and gender as explanatory variables reveals that only age is statistically relevant (p -value = 0.02%). Removing gender from the model yields a negative regression coefficient for age of -0.01258 (p -value $\approx 0\%$). Positive (negative) regression coefficients indicate a tendency towards higher (lower) scores of the response variable. So, per each year of age, the log-odds of equation (1) decrease by 0.01258, hinting that people become more critical of their urban

Table 2. Demographics statistics.

Variable	Age (years)	Gender (%)
	0–19: 102	
	20–29: 676	
	30–39: 311	Male: 64.3
	40–59: 198	Female: 32.1
	60+: 40	N/A: 3.6
	Average: 30.8	
Living experience (%)	Grew up	Currently living in
Urban	45.9	68.8
Rural–urban mix	18.2	7.7
Rural	35.9	23.5

environment as they grow older. However, the explicative power of the age CLMM compared to a threshold-only CLMM is low, having a Nagelkerke pseudo- R^2 of just 0.13%.

CLMM for geometric and land use elements

The CLMM with the five geometric and land use regressors yields [Table 3](#), the main result of this article. Due to the low explicative power of age, that variable was left out of the analysis.

In logistic regression models with categorical explanatory variables, there exists a base, or reference scenario for regressor levels, in relation to which the other levels compare. The choice of base scenario levels is arbitrary and is usually done lexicographically by the software. For the CLMM of [Table 3](#), this is of a neighborhood of high green area, narrow streets, house-like nr. of floors, compact distances, and with backyard. The high absolute value of the log-likelihood indicates a good model fit and the Nagelkerke pseudo- R^2 suggests a moderate-to-good explicative power, as logistic regressions usually have low pseudo- R^2 values ([Hughes et al., 2019](#); [Hemmert et al., 2016](#)). The random effects standard deviation of 0.8122 indicates ratings disperse almost one Likert scale point due to subject judgment. The slightly below-average mean scores of the images (2.665 for a scale mid-point of 3) evidence some displeasure with the urban environments under scrutiny.

The zero p -values for threshold coefficients indicate participants clearly distinguished between all the five Likert levels of scoring. The near-zero p -values for all category levels show that the levels are highly significant in changing the subjects' ratings with respect to the base scenario. Negative (positive) regression coefficients indicate changes towards lower (higher) neighborhood scores. A closer look at the coefficients' values reveals the direction and intensity of this change.

Green area. As compared to a neighborhood with a high percentage of green area, the negative regression coefficients show that lower percentages cause a decrease in the subjects' perception of pleasantness. The coefficient for “medium” percentage (-0.3790) is less negative than that for “small” or “none” (<-0.9000), meaning people penalize the latter more. The coefficient for “none” is slightly higher than that for “small,” so a slight preference for no green area is perceived as better than a few scattered patches of green. However, the effect is small and could perhaps be due to the small image sample size.

Table 3. R summary of the CLMM with geometric and land use elements as explanatory variables.

Element	Coefficient	Error	Z-value	p-value (%)
GreenArea medium	-0.3790	0.0421	-8.9984	0
GreenArea none	-0.9157	0.0537	-17.0580	0
GreenArea small	-0.9644	0.0321	-30.0439	0
StreetWidth wide	0.1737	0.0344	5.0474	0.000045
StreetWidth very_wide	0.8216	0.0382	21.4957	0
NrFloors medium	-0.8435	0.0453	-18.6243	0
NrFloors short	-0.7367	0.0479	-15.3636	0
NrFloors skyscraper	-1.3469	0.0527	-25.5505	0
NrFloors tall	-0.9499	0.0467	-20.3517	0
BuildingDist spaced	-0.2226	0.0340	-6.5505	0
BuildingDist sprawled	-0.2695	0.0542	-4.9758	0.000065
GreenPrivArea none	-0.6741	0.0458	-14.7135	0
Threshold coefficients	Estimate	Error	Z-values	p-value (%)
1 2	-3.0603	0.0479	-63.9435	0
2 3	-1.6770	0.0457	-36.6975	0
3 4	-0.3823	0.0447	-8.5470	0
4 5	1.1441	0.0463	24.7112	0
Random effects std. dev.	0.8122		(subject)	
Mean score	2.6649			
Log-likelihood	-48,005.94			
Nagelkerke pseudo-R ²	14.3%			

Street width. The positive coefficients show that, as compared to narrow streets, the wider the streets are, the more pleasant neighborhoods are perceived to be.

Nr. of floors. The base scenario of a neighborhood made of short houses is highly preferred, as coefficients for other levels are highly negative. Also, coefficients decrease with building height, indicating pleasantness tends to decrease accordingly, with skyscraper neighborhoods being highly disfavored.

Building distance. This element shows slightly negative coefficients for spaced and sprawled neighborhoods, indicating people tend to favor closeness of dwellings. Albeit being the element with the smallest overall impact in the ratings, that impact is nonetheless significant. A possible explanation for this might reside in a feeling of uneasiness due to crime when buildings are far apart.

Green private area. With the base scenario of having a backyard, the negative coefficient for “none” shows that having a private open space is clearly preferred to not having one.

Answers from the survey open question add considerations that help to understand the results. Public and private green areas were the most mentioned element of the five, with participants reporting an overall positive impact of having public gardens and green areas near their homes, as well as having a private backyard. In the opposite direction, building height gathered strong opinions about how it would be unbearable for some to live in buildings with a lot of floors, especially skyscrapers. Even participants who disclosed living in cities where skyscrapers are part of

the skyline felt that, given the option, they would choose not to live in such neighborhoods. With respect to street width, some participants (mostly women) found narrow streets to be unsafe, in association with lower traffic, less people, and back alleys. As to building setbacks, some expressed that a compact building is too claustrophobic, but admitted that if buildings were too far away, there would be less socialization and a sense of isolation. This last comment suggests a push-pull effect might occur, with medium-sized distances being preferred. However, that is not what the regression coefficients show.

Summarizing the results, participants declared a preference for urban environments with sizable green areas, wide streets, short but compact buildings, with private green spaces. Some of these tendencies are statistically strong enough to be expected to be general; others may become more precisely defined if more images were considered, such as, for example, the difference between the “small” and “none” green area levels or the possible push-pull effect of building setbacks. Some of the more pronounced tendencies have been identified in the literature, albeit at a qualitative level. The preference for larger urban parks has been identified in relation to various aspects by Giles-Corti et al. (2005), Gozalo et al. (2019), Kaczynski et al. (2008), and Nordh et al. (2009). Aversion to tall buildings has been recognized by Ali and Al-Kodmany (2012) and Sundrani (2012), while Mohsenin and Sevtusk (2013) found wider streets are better remembered. Day (2000) concluded that the lack of a backyard was a factor of discontent. This research adds statistical power to these findings, enabling the possibility to evaluate and predict pleasantness levels beyond qualitative considerations.

Influence of present and past experiences

Present and past experiences shape the human mind, and the perception of urban layout pleasantness should be no exception. To better understand the effect of present and past experiences, the CLMM was rerun on two subsets of the data, namely, urbanite and ruralite subjects. Urbanites are defined as people who grew up or currently live in an urban environment and never lived in a rural environment. Similarly, ruralites are people who grew up or currently live in a rural environment and never lived in an urban one. People outside these definitions were deemed mixed subjects. Table 3 summarizes sample statistical data on those subsets.

It is worth pointing out that Table 4 gives insights as to the participants’ social movements in-between the three landscape types (urban/rural/mixed), the largest one being the urban-to-mix movement, suggesting growing outskirts of the participants’ cities, and the smallest the urban-to-rural movement, which might indicate very few job opportunities created in the rural areas.

Urbanites. Table 5 displays CLMM outputs for the urbanite subset. All coefficients remain statistically very significant (p -values ≈ 0). Unsurprisingly, urbanites have a slightly more positive perception of the urban environment, with a better mean score of the images and less-penalizing

Table 4. Data subsets statistics.

Urbanite		Mixed		Ruralite	
GrewUp/LivesIn	Sample %	GrewUp/LivesIn	Sample %	GrewUp/LivesIn	Sample %
Urban/Urban	41.3	Mixed/Mixed	15.2	Rural/Rural	4.9
Urban/Mixed	18.9	Rural/Urban	8.7	Rural/Mixed	1.7
Mixed/Urban	3.5	Urban/Rural	1.1	Mixed/Rural	4.7
Total	63.7	Total	25	Total	11.3

Table 5. R summary of the CLMM for urbanites.

Urbanites				
Element	Coefficient	Error	Z-value	p-value (%)
GreenArea medium	-0.3901	0.0527	-7.4072	0
GreenArea none	-0.7443	0.0668	-11.1383	0
GreenArea small	-0.9042	0.0400	-22.6241	0
StreetWidth wide	0.1501	0.0429	3.4971	0.047
StreetWidth very_wide	0.8346	0.0476	17.5267	0
NrFloors medium	-0.7104	0.0564	-12.5896	0
NrFloors short	-0.5664	0.0599	-9.591	0
NrFloors skyscraper	-1.2184	0.0656	-18.5736	0
NrFloors tall	-0.7448	0.0580	-12.8319	0
BuildingDist spaced	-0.2552	0.0424	-6.0227	0
BuildingDist sprawled	-0.2429	0.0675	-3.5969	0.032
GreenPrivArea none	-0.7052	0.0572	-12.3224	0
Threshold coefficients	Estimate	Error	Z-value	p-value (%)
1 2	-3.0048	0.0587	-51.1556	0
2 3	-1.6414	0.0561	-29.2847	0
3 4	-0.3651	0.0548	-6.6568	0
4 5	1.1450	0.0567	20.1897	0
Random effects std. dev.	0.7561	(subject)		
Mean score	2.7201			
Log-likelihood	-31,088.73			
Nagelkerke pseudo-R ²	12,0%			

regression coefficients. The largest differences to the general case lay in the taller building types, which are not as heavily penalized, despite the clear tendency to still prefer shorter buildings. This tolerance of urbanites to taller buildings was also found by [Ali and Al-Kodmany \(2012\)](#). Similarly, for public green areas, the “none” or “small” percentages are now slightly better accepted.

Ruralites. The CLMM ruralite subset results are given in [Table 6](#). Again, almost all the coefficients are statistically significant. While some *p*-values move away from zero, they are still close enough to be considered significant at 5%, except for the “medium” level of green area percentage, which ruralites see (statistically) as equivalent to “high,” and for the 3|4 threshold. The Nagelkerke pseudo-*R*² also improved, indicating the CLMM fit is better for this subset. Ruralites rate the images with an overall lower mean score than the general case, but the interpretation of results is richer. The most striking difference lies in the regression coefficients for nr. of floors, which exhibit an increase in the aversion toward tall buildings, with considerably lower regression coefficients. The dislike for lack of public green areas also shows a steep increase. Interestingly, backyards do not seem as important to ruralites. Considering that most (if not all) rural inhabitants own lands near their houses, it is plausible that they do not feel such a strong need to have a backyard as their urbanite counterparts. Another interesting difference is on building distances, where the aforementioned push-pull effect is now evident: ruralites prefer spaced home setbacks to compact layouts, while still disliking living isolated and far away from their neighbors. The higher *p*-value for 3|4 threshold coefficient signifies ruralites find it slightly difficult to distinguish between these two levels of rating.

Table 6. R summary of the CLMM for ruralites.

Ruralites				
Element	Coefficient	Error	Z-value	p-value (%)
GreenArea medium	-0.1543	0.1265	-1.2202	22.4
GreenArea none	-1.7641	0.1668	-10.5781	0
GreenArea small	-1.2712	0.0999	-12.7245	0
StreetWidth wide	0.3540	0.1054	3.3593	0.078
StreetWidth very_wide	0.8370	0.1176	7.1199	0
NrFloors medium	-1.3689	0.1401	-9.7699	0
NrFloors short	-1.4571	0.1458	-9.9949	0
NrFloors skyscraper	-2.0460	0.1648	-12.4159	0
NrFloors tall	-1.9365	0.1472	-13.1532	0
BuildingDist spaced	0.2181	0.1023	2.1315	3.31
BuildingDist sprawled	-0.5113	0.1669	-3.0627	0.22
GreenPrivArea none	-0.4481	0.1390	-3.2238	0.13
Threshold coefficients	Estimate	Error	Z-value	p-value (%)
1 2	-3.3184	0.1603	-20.6960	0
2 3	-1.7385	0.1536	-11.3190	0
3 4	-0.2622	0.1506	-1.7408	8.17
4 5	1.4591	0.1567	9.3128	0
Random effects std. dev.	1.1520	(subject)		
Mean score	2.4763			
Log-likelihood	-4884.36			
Nagelkerke pseudo-R ²	30.4%			

In short, people used to living in urban areas are more receptive to typical urban elements, such as higher buildings, compact real estate development or less green areas, while ruralite people apparently find it hard to accept those urban characteristics. While these analyses are in line with what might be expected given the subjects' experiences and sociological characteristics, it is nevertheless interesting to see how pronounced the effects are and their direction.

Case study: application to the city of Coimbra

The CLMM makes it possible to analyze pleasantness on a city scale, giving urban planners and municipal authorities a better understanding of how their citizens may be perceiving the city's layout pleasantness. The case study focuses on Coimbra, Portugal, a mid-size city with circa 100,000 inhabitants located in the center region of Portugal. Founded in the Roman age, Coimbra has over a millennium of history of occupation by different cultures who left their mark on the city's layout. Currently, Coimbra is a typical European city, with an historical center of narrow cobblestone streets with low-rise commercial and residential buildings, modern compact neighborhoods with wide streets and tall residential and services buildings, and suburban neighborhoods consisting mainly of houses with gardens. It exhibits a variety of urban landscapes.

To apply the CLMM to Coimbra, the following methodology was used. On a digital map of Coimbra, a square mesh of 400 m diagonal (282 × 282 m sides) was created using a geographic information system (GIS), forming the neighborhoods. For each neighborhood, information

concerning the five geometric and land use elements was collected from Google Earth imagery, and its number of inhabitants was obtained from census information. In a general case, if Google Earth imagery is not available, municipal planning documents and/or on-site visits can be used alternatively. Based on the values obtained for the five geometric and land use elements of the neighborhoods of Coimbra, 1–5 rating predictions for the CLMM of Tables 3, 5, and 6 were derived in R for each neighborhood i following equation (1) with $u_i = 0$, and an average rating was calculated using $\bar{r}_i = \sum_{j=1}^5 (p_{ij} \cdot j)$, with \bar{r}_i the average rating of neighborhood i and p_{ij} the probability of neighborhood i having score j . Averaging \bar{r}_i over i , with and without weighting to the respective population, led to the summarized results of Table 7 and the map of Figure 1. The map refers to the general model of Table 3.

The non-weighted general average of 3.19 sits slightly above the Likert scale mid-point. However, the population-weighted average is more meaningful, and this is 2.69, below the mid-point. This is due to the less desirable neighborhoods (orange) having more people living in them, which is natural since zones of taller buildings and lower green area percentages are associated with denser urbanization and more inhabitants. Interestingly, there is close to no difference between the general, urbanite, and ruralite results, suggesting that Coimbra is viewed the same way despite the different backgrounds.

Application to planning

The CLMM methodology was constructed to estimate pleasantness in an abstract way, based on objective landscape elements that are quick to collect. It can be used to evaluate existing neighborhoods, but it can also be applied when new settlements are built, or existing ones regenerated. A city pleasantness score can be used as a standard for improvement. Municipal authorities can use it, for example, to evaluate new neighborhoods or urban regeneration projects, subsequently selecting the ones that have pleasantness scores higher than the city average or attain a certain threshold. This planning strategy provides a clear path to improving city pleasantness, with each new neighborhood or regeneration action raising the standard or guaranteeing a minimum one. A pleasantness score can also provide information to compare different cities. This can be done, for example, by applying the methodology used in Coimbra to other cities and deriving information such as that of Table 7 for the cities under scrutiny. For the private sector, real estate companies can use a pleasantness score to their advantage, by providing extra information about the surrounding areas of dwellings.

Neighborhood pleasantness is, however, far from the only criterium in urban planning. Other aspects are often taken into consideration as well, and in this respect, unpleasant elements such as, for example, tall buildings, have compensating plus-values such as better energy efficiency, accessibility, and housing availability. What this research adds is a tool to quantify the urban layout pleasantness aspects and put them on an equal footing with other aspects, such as those mentioned above, which are frequently treated by decision-makers in terms of numerical figures. The existence of quantitative scales for all evaluation criteria is the first step towards the application of multicriteria decision-making methods, which thus becomes feasible. Quality of life remains nonetheless an

Table 7. Average pleasantness scores for Coimbra.

Pleasantness scores (1–5)	General	Urbanites	Ruralites
Avg. per neighborhood	3.19	3.20	3.10
Weighted to inhabitants	2.69	2.74	2.64

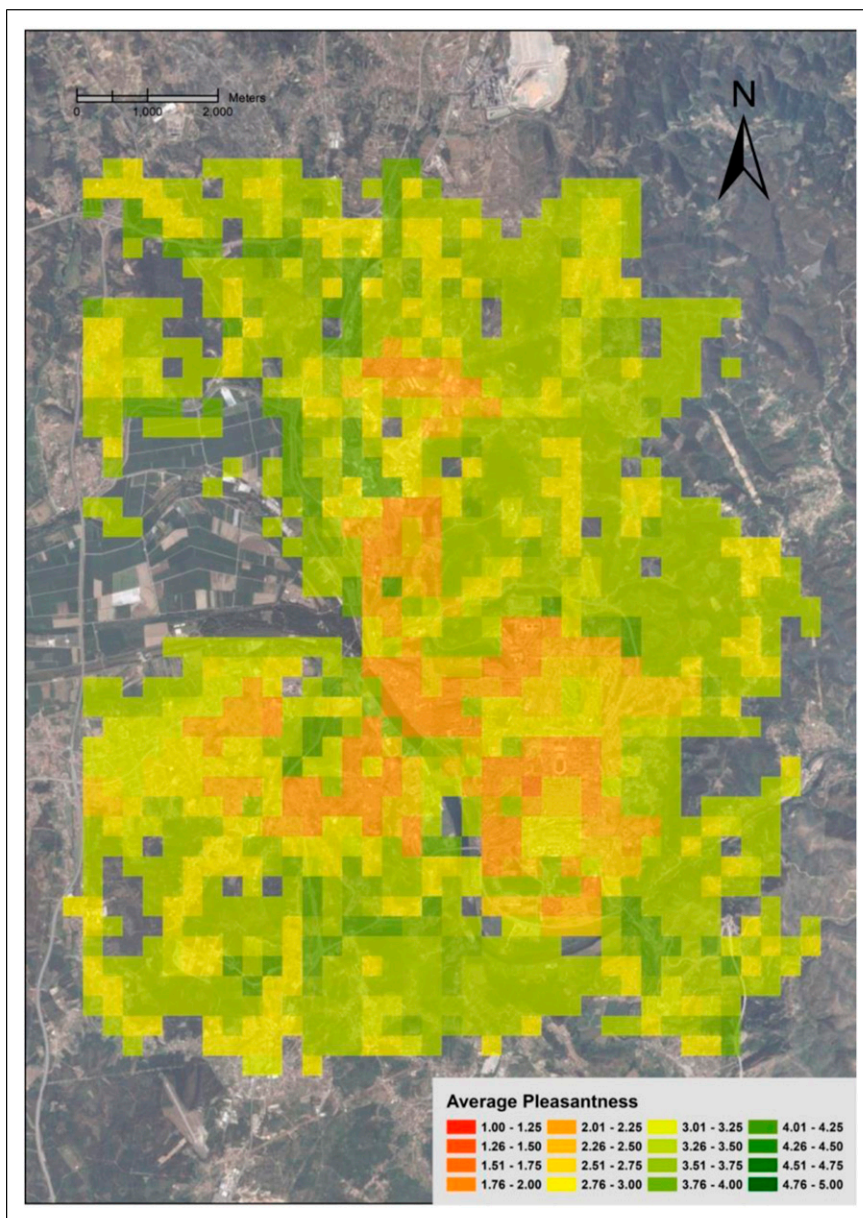


Figure 1. Coimbra pleasantness scores per neighborhood.

important benchmarking indicator to evaluate neighborhoods and cities, and in this respect, this research provides a means to quantify that benchmark.

Discussion and conclusions

This article presented a logistic regression model for estimating citizen perception of urban layout pleasantness, based on geometric and land use elements, and calibrated with data from a worldwide

online survey. Results showed that it was possible to find common ground among participants, who declared statistically significant preferences for smaller buildings, plentiful green areas, wider streets, and dwellings with private backyards and close to each other. The preference for these features was also shown to be stronger for people with experience of living in rural areas, whereas people with experience of living in urban areas were more tolerant towards the lack of those features.

Most of the statistical tendencies identified in this study are in line with other findings in the literature and strengthen these by providing quantitative support. Those findings, mentioned in section CLMM for geometric and land use elements, were mostly qualitative. Recently, quantitative research surfaced which added further support for three of the tendencies found by the present article. Tall buildings and skylines can be statistically traced back to oppressive sensations for the viewer (Asgarzadeh et al., 2012) and smaller scenic beauty (Wang et al., 2021). Those authors also found that higher proportions of vegetation and the presence of trees mitigate the aforementioned negative effects. Trees were also seen by Basu et al. (2022) to contribute to a more pleasant walking experience, while Lee (2021) argued, via a structural equation model, that large urban parks contribute to urban satisfaction. D'Acci (2014) approached pleasantness from a financial perspective, having found that more green areas and wider open spaces lead to higher real estate values. The present research brings together all the above isolated evidence under a unifying statistical model and adds further explanatory variables. This model is, to the best of the authors' knowledge, one of the first contributions to the literature on perception of urban layout pleasantness based on quantitative methods. Furthermore, it provides municipal decision-makers with an evaluation tool that can be used for planning purposes alongside other aspects of urban planning. The case study of Coimbra proved its applicability at the city scale, helping municipal authorities to better understand the impact of urbanization projects on the quality of life.

Some of the tendencies found in this research are worth exploring deeper, such as the push-pull effect of building distance, that is, people preferring homes that are not too close to each other nor too far apart, an effect that is only seen for the subset of people with life experience in rural areas. This could require rerunning the survey with more images. Another interesting line of research would be to include subjective elements in the analysis, such as, for example, building aesthetics or landscape-architectural beauty, weigh the impact of these factors on overall scores when compared to the objective geometric and land use elements, and confront the results with the recent findings on urban aesthetics mentioned in the introduction. We hope to address some of these issues in the near future.

Acknowledgments

Authors would like to thank Prof. M.a do Rosário Ramos (Universidade Aberta) for discussions on the statistical modeling, Prof. Vítor Rocio (Universidade Aberta) for helping with the natural language analysis, and Prof. Sandra Xavier (Universidade de Coimbra) for discussions on anthropological and sociological aspects of urban pleasantness.

Declaration of conflicting interests

The author(s) declared no potential conflicts of interest with respect to the research, authorship, and/or publication of this article.

Funding

The author(s) disclosed receipt of the following financial support for the research, authorship, and/or publication of this article: This work was supported by the Portuguese Foundation for Science and Technology under project grants UIDB/00308/2020 and PD/BD/150589/2020.

Supplemental Material

Supplemental material for this article is available online.

References

- Alexander C, Ishikawa S and Silverstein M (1977) *A Pattern Language: Towns, Buildings, Construction*. Oxford University Press, 1–1171.
- Ali MM and Al-Kodmany K (2012) Tall buildings and urban habitat of the 21st Century: a global perspective. *Buildings* 2(4): 384–423. DOI: [10.3390/buildings2040384](https://doi.org/10.3390/buildings2040384).
- Asgarzadeh M, Lusk A, Koga T, et al. (2012) Measuring oppressiveness of streetscapes. *Landscape and Urban Planning* 107: 1–11. DOI: [10.1016/j.landurbplan.2012.04.001](https://doi.org/10.1016/j.landurbplan.2012.04.001).
- Ball K, Bauman A, Leslie E, et al. (2001) Perceived environmental aesthetics and convenience and company are associated with walking for exercise among Australian adults. *Preventive Medicine* 33(5): 434–440. DOI: [10.1006/pmed.2001.0912](https://doi.org/10.1006/pmed.2001.0912).
- Basu N, Oviedo-Trespalacios O, King M, et al. (2022) The influence of the built environment on pedestrians' perceptions of attractiveness, safety and security. *Transportation Research Part F: Psychology and Behaviour* 87: 203–218. DOI: [10.1016/j.trf.2022.03.006](https://doi.org/10.1016/j.trf.2022.03.006).
- Bruinsma F and Rietveld P (1998) The accessibility of European cities: theoretical framework and comparison of approaches. *Environment and Planning A* 30(3): 499–521. DOI: [10.1068/a300499](https://doi.org/10.1068/a300499).
- Calafiore A (2020) Measuring beauty in urban settings. In: GISRUK 2020 Proceedings, pp. 1–9. Available at: http://london.gisruk.org/gisruk2020_proceedings/GISRUK2020_paper_70.pdf
- Candeia D, Figueiredo F, Andrade N, et al. (2017) Multiple images of the city: Unveiling group-specific urban perceptions through a crowdsourcing game. In: HT '17: Proceedings of the 28th ACM Conference on Hypertext and Social Media, Prague, pp. 1–10. DOI: [10.1145/3078714.3078728](https://doi.org/10.1145/3078714.3078728).
- Christensen R (2019) *Package 'ordinal'*. R software package manual. Available at: <https://cran.r-project.org/web/packages/ordinal/ordinal.pdf> (retrieved 12 November 2021).
- Cullen G (1961) *Concise townscape*. Routledge, 1–200.
- Cullen J and Levitt S (1999) Crime, urban fight, and the consequences for cities. *The Review of Economics and Statistics* 81(2): 159–169. DOI: [10.1162/003465399558030](https://doi.org/10.1162/003465399558030).
- D'Acci L (2014) Monetary, subjective and quantitative approaches to assess urban quality of life and pleasantness in cities (Hedonic Price, Willingness-to-pay, positional value, life satisfaction, Isobenefit Lines). *Social Indicators Research* 115: 531–559. DOI: [10.1007/s11205-012-0221-7](https://doi.org/10.1007/s11205-012-0221-7).
- D'Acci L (2019) Aesthetic cognitive perceptions of urban street form: pedestrians preferences towards straight or curvy routes shapes. *Journal of Urban Design* 24: 1–19. DOI: [10.1080/13574809.2018.1554994](https://doi.org/10.1080/13574809.2018.1554994).
- Day L (2000) Choosing a house: the relationship between dwelling type, perception of privacy and residential satisfaction. *Journal of Planning Education and Research* 19: 265–275. DOI: [10.1177/0739456X0001900305](https://doi.org/10.1177/0739456X0001900305).
- DfT – UK Department for Transport (2007) *Manual for Streets*. Thomas Telford Publishing, 1–346.
- Galesic M and Bosnjak M (2009) Effects of questionnaire length on participation and indicators of response quality in a web survey. *Public Opinion Quarterly* 73(2): 349–360. DOI: [10.1093/poq/nfp031](https://doi.org/10.1093/poq/nfp031).
- Giles-Corti B, Broomhall MH, Knuiaman M, et al. (2005) Increasing walking: How important is distance to, attractiveness, and size of public open space? *American Journal of Preventive Medicine* 28(2 Supplement 2): 169–176. DOI: [10.1016/j.amepre.2004.10.018](https://doi.org/10.1016/j.amepre.2004.10.018).
- GovDC – Government of the District of Columbia (2019) *Public Realm Design Manual*. Government of the District of Columbia, 1–81.
- Gozalo GR, Morillas JMB and González DM (2019) Perceptions and use of urban green spaces on the basis of size. *Urban Forestry & Urban Greening* 46: 126470. DOI: [10.1016/j.ufug.2019.126470](https://doi.org/10.1016/j.ufug.2019.126470).

- Handy S (2002) *Accessibility vs. Mobility: Enhancing Strategies for Addressing Automobile Dependence in the U.S.* Report for the 2002 European Conference of Ministers of Transport. Available at: <https://escholarship.org/uc/item/5kn4s4pb> (retrieved 16 November 2021).
- Hemmert AJG, Schons LM, Wieseke J, et al. (2016) Log-likelihood-based Pseudo-R2 in logistic regression: deriving sample-sensitive benchmarks. *Sociological Methods & Research* 47(3): 507–531. DOI: [10.1177/0049124116638107](https://doi.org/10.1177/0049124116638107).
- Hofmann M, Westermann J, Kowarik I, et al. (2012) Perceptions of parks and urban derelict land by landscape planners and residents. *Urban Forestry & Urban Greening* 11: 303–312. DOI: [10.1016/j.ufug.2012.04.001](https://doi.org/10.1016/j.ufug.2012.04.001).
- Hughes G, Choudhury RA and McRoberts N (2019) Summary measures of predictive power associated with logistic regression models of disease risk. *Phytopathology* 109(5): 712–715. DOI: [10.1094/PHYTO-09-18-0356-LE](https://doi.org/10.1094/PHYTO-09-18-0356-LE).
- Humpel N, Owen N, Iverson D, et al. (2003) Perceived environment attributes, residential location, and walking for particular purposes. *American Journal of Preventive Medicine* 26(2): 119–125. DOI: [10.1016/j.amepre.2003.10.005](https://doi.org/10.1016/j.amepre.2003.10.005).
- IDoTTS – Irish Department of Transport, Tourism and Sport (2013) *Design Manual for Urban Roads and Streets*, 1–165.
- Jacobs A (1995) *Great streets*. The MIT Press, 1–334.
- Jacobs J (1961) The death and life of great American cities. *Yale Law Journal* 6: 94–109.
- Kaczynski AT, Potwarka LR and Saelens BE (2008) Association of park size, distance, and features with physical activity in neighborhood parks. *American Journal of Public Health* 98(8): 1451–1456. DOI: [10.2105/AJPH.2007.129064](https://doi.org/10.2105/AJPH.2007.129064).
- Lee K-Y (2021) Factors Influencing urban livability in Seoul, Korea: urban environmental satisfaction and neighborhood relations. *Social Sciences* 10: 138. DOI: [10.3390/socsci10040138](https://doi.org/10.3390/socsci10040138).
- Li S, Ma S, Tong D, et al. (2021) Associations between the quality of street space and the attributes of the built environment using large volumes of street view pictures. *Environment and Planning B: Urban Analytics and City Science*. (in press) DOI: [10.1177/23998083211056341](https://doi.org/10.1177/23998083211056341).
- Lynch K (1960) *The Image of the City*. The MIT Press, 1–208.
- Maher C (1994) Residential mobility, locational disadvantage and spatial inequality in Australian cities. *Urban Policy and Research* 12(3): 185–191. DOI: [10.1080/08111149408551629](https://doi.org/10.1080/08111149408551629).
- Marantz N and Zheng H (2019) State affordable housing appeals systems and access to opportunity: evidence from the Northeastern United States. *House Policy Debate* 30(3): 370–395. DOI: [10.1080/10511482.2020.1712612](https://doi.org/10.1080/10511482.2020.1712612).
- Meng Y and Xing H (2019) Exploring the relationship between landscape characteristics and urban vibrancy: a case study using morphology and review data. *Cities* 95: 1–13. DOI: [10.1016/j.cities.2019.102389](https://doi.org/10.1016/j.cities.2019.102389).
- Mohsenin M and Sevtusk A (2013) The impact of street properties on cognitive maps. *Journal of Architecture and Urbanism* 37(4): 301–309. DOI: [10.3846/20297955.2013.866864](https://doi.org/10.3846/20297955.2013.866864).
- Mouratidis K (2021) Urban planning and quality of life: a review of pathways linking the built environment to subjective well-being. *Cities* 115: 103229. DOI: [10.1016/j.cities.2021.103229](https://doi.org/10.1016/j.cities.2021.103229).
- Nordh H, Hartig CM, Hagerhall CM, et al. (2009) Components of small urban parks that predict the possibility for restoration. *Urban Forestry & Urban Greening* 8(4): 225–235. DOI: [10.1016/j.ufug.2009.06.003](https://doi.org/10.1016/j.ufug.2009.06.003).
- Rayaprolu HS, Llorca C and Moeckel R (2020) Impact of bicycle highways on commuter mode choice: a scenario analysis. *Environment and Planning B: Urban Analytics and City Science* 47(4): 662–677. DOI: [10.1177/2399808318797334](https://doi.org/10.1177/2399808318797334).
- Revilla M and Ochoa C (2017) Ideal and maximum length for a web survey. *International Journal of Market Research* 59(5): 557–565. DOI: [10.2501/IJMR-2017-039](https://doi.org/10.2501/IJMR-2017-039).
- Riffat S, Powell R and Aydin D (2016) Future cities and environmental sustainability. *Future Cities and Environment* 2: 1–23. DOI: [10.1186/s40984-016-0014-2](https://doi.org/10.1186/s40984-016-0014-2).
- Rijswijk L, Rooks G and Haans A (2016) Safety in the eye of the beholder: individual susceptibility to safety-related characteristics of nocturnal urban scenes. *Journal of Environmental Psychology* 45: 103–115. DOI: [10.1016/j.jenvp.2015.11.006](https://doi.org/10.1016/j.jenvp.2015.11.006).

- SDT – Stakeholder Design Team (2000) *Neighborhood Street Design Guidelines*. Transportation and Growth Management of Oregon, 1–30.
- Stamps A (1998) Complexity of architecture silhouettes: from vague impressions to definite design features. *Perceptual and Motor Skills* 87: 1407–1417. DOI: [10.2466/pms.1998.87.3f.1407](https://doi.org/10.2466/pms.1998.87.3f.1407).
- Sullivan W (1994) Perceptions of the rural-urban fringe: citizen preferences for natural and developed settings. *Landscape and Urban Planning* 29: 85–101. DOI: [10.1016/0169-2046\(94\)90020-5](https://doi.org/10.1016/0169-2046(94)90020-5).
- Sundrani DM (2012) Consumer perception towards tall buildings. *Journal of Business and Management* 4(4): 16–19. DOI: [10.9790/487X-0441619](https://doi.org/10.9790/487X-0441619).
- Sussman R, Conrad S, Kormos C, et al. (2021) Context and meaningfulness in energy efficiency labeling: real estate listings. *Journal of Environmental Psychology* 78: 101681. DOI: [10.1016/j.jenvp.2021.101681](https://doi.org/10.1016/j.jenvp.2021.101681).
- Tallen E (1999) Sense of community and neighborhood form: an assessment of the social doctrine of New Urbanism. *Urban Studies* 36(8): 1361–1379. DOI: [10.1080/0042098993033](https://doi.org/10.1080/0042098993033).
- The BIM (2018) *What is a Skyscraper?* Available at: <https://www.thebim.com/video/what-is-a-skyscraper> (retrieved 04 October 2021).
- Tutz G and Hennevoogl W (1996) Random effects in ordinal regression models. *Computational Statistics & Data Analysis* 22: 537–557. DOI: [10.1016/0167-9473\(96\)00004-7](https://doi.org/10.1016/0167-9473(96)00004-7).
- Wang Y, Zlatanova S, Yan J, et al. (2021) Exploring the relationship between spatial morphology characteristics and scenic beauty preference of landscape open space unit by using point cloud data. *Environment and Planning B: Urban Analytics and City Science* 48(7): 1822–1840. DOI: [10.1177/2399808320949885](https://doi.org/10.1177/2399808320949885).
- Weinberger A, Christensen A, Coburn A, et al. (2021) Psychological responses to buildings and natural landscapes. *Journal of Environmental Psychology* 77: 1–10. DOI: [10.1016/j.jenvp.2021.101676](https://doi.org/10.1016/j.jenvp.2021.101676).
- Wergles N and Muhar A (2009) The role of computer visualization in the communication of urban design – a comparison of viewers responses to visualization versus on-site visits. *Landscape and Urban Planning* 91(4): 171–182. DOI: [10.1016/j.landurbplan.2008.12.010](https://doi.org/10.1016/j.landurbplan.2008.12.010).
- Yang Y and Diez-Roux A (2012) Walking distance by trip purpose and population subgroups. *American Journal of Preventive Medicine* 43(1): 11–19. DOI: [10.1016/j.amepre.2012.03.015](https://doi.org/10.1016/j.amepre.2012.03.015).
- Yaran A (2016) Investigating the aesthetic impact of tall buildings on urban landscape. *Journal of Building Performance* 7(1): 1–8. <http://spaj.ukm.my/jsb/index.php/jbp/index>
- Ye Y, Zeng W, Shen Q, et al. (2019) The visual quality of streets: a human-centred continuous measurement based on machine learning algorithms and street view images. *Environment and Planning B: Urban Analytics and City Science* 46(8): 1439–1457. DOI: [10.1177/2399808319828734](https://doi.org/10.1177/2399808319828734).
- Zhang A, Li W, Wu J, et al. (2021) How can the urban landscape affect urban vitality at the street block level? A case study of 15 metropolises in China. *Environment and Planning B: Urban Analytics and City Science* 48(5): 1245–1262. DOI: [10.1177/2399808320924425](https://doi.org/10.1177/2399808320924425).

Author Biographies

João Coutinho-Rodrigues has been the Director (2019–2021) and a Full Professor at the Department of Civil Engineering, Faculty of Sciences and Technology, University of Coimbra (where he has been since 1980), and senior researcher in the Decision Support in Systems Engineering group at INESC-Coimbra. He received his 5-year first-degree in Civil Eng., his MSc in Computer Science and PhD in Civil Eng. from the University of Coimbra. Research interests include: decision support systems, multicriteria analysis, networks, GIS, and applications in urban/environmental/transportation engineering. He has published, among other journals, in: *Computer-Aided Civil and Infrastructure Engineering*, *Computers & Operations Research*, *Decision Support Systems*, *Engineering Optimization*, *Engineering Sustainability - Institution of Civil Engineers*, *Environment and Planning B: Urban Analytics and City Science*, *European Journal of Operational Research*, *Foundations of Computing and Decision Sciences*, *Geographical Analysis*, *International Journal of Computer Applications in Technology*, *Journal of Business Logistics*, *Journal of*

Infrastructure Systems - American Society of Civil Engineers, Journal of Transport Geography, Municipal Engineer - Institution of Civil Engineers (best paper award 2017), Socio-Economic Planning Sciences, Sustainability, Transport Policy, Transportation Research - Part A: Policy and Practice, Transportation Research - Part B: Methodological, Transportation Research Record, Waste Management, Water Power & Dam Construction.

Nuno Sousa holds a 4-year first-degree in physics (1995) and an MSc in theoretical physics (1998) at the University of Coimbra, and a PhD in high-energy physics (string theory) at the Nijmegen University, currently Radboud Universiteit (2003). He is an Assistant Professor at the Department of Science and Technology of the Open University of Portugal. In addition, he has held post-doc positions at the University of Oporto and Technical University of Lisbon (Instituto Superior Técnico) and several teaching positions at other higher education institutions in Portugal. He is a researcher at the Institute for Systems Engineering and Computers (INESC). His current research interests include operations research topics such as multi-objective modeling, location, routing, accessibility analysis, GIS, meta-heuristics and application of physics-based methods to optimization. He has published in scientific journals such as *Physics Letters, Nuclear Physics, International Journal of Modern Physics, Computer-Aided Civil and Infrastructure Engineering, Engineering Optimization, Journal of Infrastructure Systems - American Society of Civil Engineers, Municipal Engineer - Institution of Civil Engineers (best paper award 2017), Sustainability, and Transport Policy.*

Eduardo Natividade-Jesus is currently Professor at the Department of Civil Engineering, Polytechnic Institute of Coimbra – School of Engineering (where he has been since 1996), and researcher in the Decision Support Systems group at INESC-Coimbra. Research interests include: urban regeneration, housing evaluation, project management and evaluation, decision support systems, multicriteria analysis, GIS. He received his 5-year first-degree in Civil Engineering, MSc in Civil Engineering (Construction Sciences) and PhD in Civil Engineering from the University of Coimbra. He has published, among other journals and conference proceedings, in: *Decision Support Systems, Municipal Engineer - Institution of Civil Engineers, and Sustainability.*

João Monteiro, MSc in Civil Engineering by the University of Coimbra (2018), is currently a Spatial Planning PhD student at the University of Coimbra. His research addresses urban form benchmarking analysis and is supervised by senior researchers of INESC Coimbra R&D Unit. He received a PhD grant of FCT – Fundação para a Ciência e a Tecnologia (the Portuguese public agency that supports science, technology and innovation, in all scientific domains, under responsibility of the Ministry for Science, Technology and Higher Education).