



**Faculdade de Economia  
da Universidade de Coimbra**

Grupo de Estudos Monetários e Financeiros  
(GEMF)  
Av. Dias da Silva, 165 – 3004-512 COIMBRA,  
PORTUGAL

gemf@fe.uc.pt  
<http://gemf.fe.uc.pt>

FERNANDO ALEXANDRE, PEDRO BAÇÃO & VASCO  
GABRIEL

**Taylor-type rules versus optimal policy in  
a Markov-switching economy<sup>α</sup>**

---

ESTUDOS DO GEMF

N.º 2

2008

**PUBLICAÇÃO CO-FINANCIADA PELA  
FUNDAÇÃO PARA A CIÊNCIA E TECNOLOGIA**

Impresso na Secção de Textos da FEUC  
COIMBRA 2008

# Taylor-type rules versus optimal policy in a Markov-switching economy\*

Fernando Alexandre<sup>†</sup>, Pedro Bação<sup>‡</sup> and Vasco Gabriel<sup>§</sup>

April 28, 2008

## Abstract

We analyse the effect of uncertainty concerning the state and the nature of asset price movements on the optimal monetary policy response. Uncertainty is modelled by adding Markov-switching shocks to a DSGE model with capital accumulation. In our analysis we consider both Taylor-type rules and optimal policy. Taylor rules have been shown to provide a good description of US monetary policy. Deviations from its implied interest rates have been associated with risks of financial disruptions. Whereas interest rates in Taylor-type rules respond to a small subset of information, optimal policy considers all state variables and shocks. Our results suggest that, when a bubble bursts, the Taylor rule fails to achieve a soft landing, contrary to the optimal policy.

*JEL Classification:* E52, E58.

*Keywords:* Asset Prices, Monetary Policy, Markov Switching.

---

\*The authors are grateful to participants in seminars at the Portuguese Catholic University (Porto) and at the University of Minho, in particular to Francisco Veiga, Luis Aguiar-Conraria and Ricardo Sousa.

<sup>†</sup>NIPE and University of Minho. Address: Department of Economics, University of Minho, 4710-057 Braga, Portugal.

<sup>‡</sup>GEMF and Faculty of Economics of the University of Coimbra. Address: Faculdade de Economia da Universidade de Coimbra, Av. Dias da Silva 165, 3004-512 Coimbra, Portugal.

<sup>§</sup>NIPE and University of Surrey. Address: Department of Economics, University of Surrey, Guildford, Surrey, GU2 7XH, UK.

# 1 Introduction

Several authors have identified a break in output growth volatility, in the US, around the mid-1980s — see, for example, (Kim and Nelson 1999) and (McConnell and Perez-Quiros 2000). According to (Stock and Watson 2002) the standard deviation of the growth rate of GDP was one-third less during 1984 to 2002 than it was during 1960 to 1983. The decline in the volatility of inflation and real GDP, in the last two decades, in the US and in other industrialised countries, has been dubbed the Great Moderation or the Long Boom. According to (Taylor 2007), this may have been the most important macroeconomic event in the last half century. Lower volatility of output in the post-1984 period is associated with less frequent and less severe recessions: since 1984, the National Bureau of Economic Research identified only two recessions — one in 1990 and the other in 2001 — which were among the mildest and shortest recessions since the Second World War, with duration from peak to trough of eight months each.

These changes in the business cycle have raised the question of what has been the role of the Federal Reserve in this new regime of the US economy. Although structural changes in the economy and good luck concerning the shocks that hit the economy during that period had certainly a role — see, for example, (Stock and Watson 2002) and (McConnell and Perez-Quiros 2000) —, it has been argued that improvements in monetary policy were crucial in generating a lower inflation and a more stable output — see, for example, (Bernanke 2004) and (Clarida, Galí, and Gertler 2000). Among the changes in monetary policymaking is the apparent adoption of the so-called Taylor principle, which implies a response of the interest rate policy instrument to changes in inflation with a coefficient greater than one. In fact, a more aggressive reaction of the interest rate to inflation and to the output gap is an important difference between the period of the Great Moderation and the previous period

— see, for example, (Clarida, Galí, and Gertler 2000).

An extensive literature on monetary-policy rules suggests that to follow a specific simple rule may be the best prescription to a good monetary policy — see, for example, (Taylor 1999). The Taylor rule was proposed as a guideline for assessing interest rate decisions (Taylor 1993). Additionally, financial market analysts, scholars and central banks’ staff have been using monetary policy rules increasingly to forecast interest rates and to evaluate and describe central bank policy actions — see, for example, (Judd and Trehan 1995) and (Blinder and Reis 2006). The Taylor rule has provided a good description of monetary policy under Alan Greenspan’s mandate — see (Rudebusch 2006) and Figure 1. However, Taylor rule’s inflation and unemployment coefficients are better seen as “historically average responses”<sup>1</sup> rather than as a literal description of the actual monetary policy of the Federal Reserve (Blinder and Reis 2006). Actually, the Federal Reserve has deviated from interest rate movements implied by the Taylor rule on several occasions. Those deviations of the US monetary policy have been associated with high risks of financial markets disruptions (Greenspan 2004). The stock market collapse in 1987 and the 1998 Russian debt default, followed by the demise of the Long-Term Capital Management hedge fund were two such episodes of monetary policy easing relative to the Taylor rule prescription. The terrorist attack of September 11 was another instance involving a high risk of financial instability and an aggressive monetary easing. More recently, following the sub-prime crisis, the Federal Reserve has cut the Fed’s Fund rate in 300 basis points, between August 2007 and March 2008.

(Taylor 2007), although recognising that the Taylor rule is not supposed to be followed mechanically, argues that monetary policy might deliver better results, in terms of low inflation and output variability, by staying closer to the

---

<sup>1</sup>This was the expression used by (Greenspan 2004).

rule. (Taylor 2007) sees more disadvantages than advantages in deviations of interest rates from the movements implied by the Taylor rule. On the other hand, (Greenspan 2004) argues that in events of the type described above simple policy rules would be inadequate as they are unable to take into consideration every contingency. In the same vein, (Svensson 2003) argues that a commitment to a simple instrument rule may be far from optimal in some circumstances. In fact, (Greenspan 2004) advocates instead a risk-management approach, which “emphasises understanding as much as possible the many sources of risk and uncertainty that policymakers face” (Greenspan 2004, p. 37). (Svensson and Williams 2005) develop a procedure to solve optimal monetary policy problems under model uncertainty which, in their words, is consistent with Greenspan’s risk-management approach. (Svensson and Williams 2005) approach to optimal policy under model uncertainty considers the whole probability distribution of future variables.

In this paper, we apply (Svensson and Williams 2005) solution methods to a DSGE model with investment and uncertainty concerning the nature of asset price movements. In (Dupor 2005) model, agents cannot distinguish between fundamental and non-fundamental shocks in asset prices. In this paper, we add an additional source of uncertainty to Dupor’s setting. The additional uncertainty affects the behaviour of asset prices via a Markov-switching autoregressive coefficient in both fundamental and non-fundamental shocks. The assumption of Markov-switching non-fundamental shocks adds realism to the model, judging by the empirical evidence reported in, among others, (Cecchetti, Lam, and Mark 1990), (Bonomo and Garcia 1994) and (Driffill and Sola 1998).

We use this setting, where fads and bubbles in asset prices are modelled as non-linear processes, to compare the performance of Taylor-type rules with the optimal policy in stabilising the economy. In the Taylor-type rules that we consider in this paper, the interest rate reacts with fixed coefficients to a

small subset of information available to the central bank, namely, inflation, the output gap and, possibly, asset prices. On the other hand, optimal rules take into account all state variables, shocks and the uncertainty in the economy, namely, in our economy it takes into account the switching nature of asset prices and therefore the probability of a crash. To obtain the results reported below, we employed the methods proposed by (Svensson and Williams 2005), assuming full information under commitment.<sup>2</sup>

We focus our analysis on output and real interest rate adjustment when the asset price bubble bursts, namely, we compare the performance of Taylor-type rules and optimal policy during and after a bubble episode. Simulations seem to suggest that the optimal policy is more effective in containing the bubble-induced expansion, producing a soft landing. Additionally, our results suggest that real interest rates are less volatile under Taylor-type rules.

Our exposition is organised as follows. Section 2 presents the model and discusses the monetary policy framework. Section 3 evaluates the performance of the economy under Taylor-type rules and optimal policy. Section 4 concludes.

## **2 A model with Markov-switching asset prices**

In a world where asset price movements simply reflect fundamentals, their only role in monetary policy making is as a conveyer of information about the state of the economy. However, there is evidence that asset prices are partly driven by non-fundamental movements, that is, there are fads or bubbles — e.g., (Shiller 2000). In these periods, asset prices may induce inefficient decisions by firms and consumers, and therefore destabilise the economy. This has been the main argument for monetary policy to respond directly to asset prices — see, for

---

<sup>2</sup>(Alexandre, Bação, and Driffill 2007) use those methods in the context of an open-economy model.

example, (Cecchetti, Genberg, Lipsky, and Wadhvani 2000) and (Dupor 2005). However, there is disagreement on whether policymakers should target asset prices because of the uncertainty concerning the nature of the forces driving asset prices. Some authors argue that uncertainty concerning the magnitude of misalignments in asset prices is not trivial and that it might imply that the welfare benefits from including them in the policy reaction function may vanish very easily — see, among others, (Gilchrist and Saito 2006), (Alexandre and Bação 2005) and (Tetlow 2004).

In this paper, we use (Dupor 2005)’s DSGE model with capital accumulation and adjustment costs to evaluate the performance monetary policy rules in stabilising the economy. This model, described in the next section, was developed to study the optimal response of monetary policy to asset prices when agents cannot discern the nature of the shocks that move asset prices. In Dupor’s model, expectations of future returns to investment may be affected by unwarranted views about future productivity, resulting in “irrational exuberance” and overinvestment. In this paper, we add an additional source of uncertainty to Dupor’s setting. The additional uncertainty affects the behaviour of asset prices via a Markov-switching autoregressive coefficient in both fundamental and non-fundamental shocks. We therefore assume a Markov-switching process, with booming periods of continuous growth in asset prices being interrupted by sudden corrections, aiming to capture the complex behaviour of financial markets.

This setting allows us to compare the performance of Taylor-type rules with the optimal policy, when firms and policymakers face uncertainty concerning the driving forces of asset prices and the moment when bubbles in asset prices will collapse.

In the next sections we provide a more detailed analysis of the model and of the monetary policy framework we use in our analysis.

## 2.1 Uncertainty in a model with investment

In this paper, we use (Dupor 2005)’s DSGE model with capital accumulation to evaluate the performance of monetary policy rules when a bubble bursts. In Dupor’s model, expectations of future returns to investment may be affected by unwarranted views about future productivity, resulting in “irrational exuberance” and overinvestment. Below we briefly sketch the model, referring the reader to (Dupor 2005) for further details.

The model’s “household-firms” are simultaneously consumers (utility maximizers subject to a budget constraint) and producers (under monopolistic competition). They sell labour, and hire the labour used in production, in a competitive labour market, while the capital stock is rented from “investment-firms”.

Investment-firms are responsible for capital accumulation decisions. Dupor assumes there are costs of adjusting capital, represented by a function  $\Phi$ . The investment-firms’ period profit is given by receipts from renting capital ( $r_t k_t$ ), minus investment expenditure ( $k_{t+1} - (1 - \delta) k_t$ , where  $\delta$  is the depreciation rate), minus capital adjustment costs:

$$z_t = r_t k_t + (1 - \delta) k_t - k_{t+1} - \Phi \left( \frac{k_{t+1}}{k_t} \right) k_t \quad (1)$$

Investment-firms maximise discounted expected profits:

$$z_t + E_t \sum_{j=1}^{\infty} [\beta_{t+j} \tilde{z}_{t+j}] \quad (2)$$

where  $\beta_{t+j}$  is the discount factor and  $\tilde{z}_{t+j}$  is the process investment-firms expect profits to follow in the future. The following assumption is used:

$$\tilde{z}_{t+j} = \theta_{t+j} r_{t+j} k_{t+j} + (1 - \delta) k_{t+j} - k_{t+j+1} - \Phi \left( \frac{k_{t+j+1}}{k_{t+j}} \right) k_{t+j} \quad (3)$$

The factor  $\theta_{t+j}$  is the crucial element: it represents non-fundamental shocks (when  $\theta_{t+j} \neq 1$ ) that distort investment decisions. Dupor uses a (log-)linear



specification for the non-fundamental shock, chosen to produce a hump-shaped effect:

$$\hat{\theta}_t = \omega \hat{\theta}_{1,t} + (\omega - 1) \hat{\theta}_{2,t} \quad (4)$$

$$\hat{\theta}_{j,t} = \rho_j \hat{\theta}_{j,t-1} + \hat{\varepsilon}_t^\theta \quad (j = 1, 2) \quad (5)$$

where  $\hat{\varepsilon}_t^\theta$  is white noise.

Instead we use a Markov-switching specification, to replicate the impact of a sudden burst in asset prices, characteristic of financial crises. We assume there are two states. The two states aim at capturing the complex behaviour of financial markets, which have quiescent periods, when they seem to be driven by fundamentals, interspersed with periods of “irrational exuberance”. Therefore, we assume that in the first state the shocks have no persistence:

$$\hat{\theta}_{j,t} = \hat{\varepsilon}_t^\theta \quad (j = 1, 2) \quad (6)$$

In the second, exuberant regime, shocks are mildly explosive. This is achieved by multiplying Dupor’s autoregressive coefficients by 1.6, which yields autoregressive coefficients close to 1.09:

$$\hat{\theta}_{j,t} = 1.6 \rho_j \hat{\theta}_{j,t-1} + \hat{\varepsilon}_t^\theta \quad (j = 1, 2) \quad (7)$$

When the economy moves from state 1 to state 2, investment-firms expect profits to increase exponentially and a bubble develops. The bubble bursts when the economy moves from state 2 back to state 1. The state of the economy is assumed to evolve as a Markov chain with the following probability transition matrix:

$$P = \begin{bmatrix} p_{11} & p_{12} \\ p_{21} & p_{22} \end{bmatrix} \quad (8)$$

where  $p_{ij} = 1 - p_{ii}$  (when  $i \neq j$ ) and  $p_{ij}$  is the probability of moving from state  $i$  in the current period to state  $j$  in the next period. In this model, the policymaker is uncertain about the state of the economy in the next

period. However, the transition probabilities are known and exogenous. In our computations we used the values 0.25, 0.50 and 0.75 for  $p_{ii}$ , though here we only report results obtained with  $p_{11} = p_{22} = 0.5$ , which were found to be representative. The other parameters in the model take the same values as in (Dupor 2005, Table 1, page 738).

We focus our analysis on the comparison of the behaviour of the optimal policy and of the Taylor rule. In the case of the Taylor rule, the interest rate reacts to output and inflation with coefficients of 0.5 and 1.5, respectively (Taylor 1993).

The solution of the model is obtained using the method proposed by (Svensson and Williams 2005) for solving Markov-switching rational expectations models. Appropriately for our purposes, these authors argue that their approach to model uncertainty is consistent with Greenspan's risk-management approach, mentioned in the Introduction.

## 2.2 Taylor-type rules

Simple, or Taylor-type, rules have been widely discussed among academics in monetary policy analysis. Several arguments have been used in its defense. On one hand, it has been argued that simple rules perform nearly as well as optimal rules (see, for example, (Rudebusch and Svensson 1999)). On the other hand, it has been argued that simple rules are very robust to several types of uncertainty (see, for example, (Levin, Wieland, and Williams 1999)). We therefore consider a set of simple rules to see how they compare to the optimal policy rule and how good they are in dealing with uncertainty concerning movements in asset prices. The set of rules used in our computations are summarised in Table 2.

We consider the original Taylor rule (Taylor 1993), where the interest rate reacts to output and inflation with coefficients of 0.5 and 1.5, respectively. As

mentioned in the Introduction, this rule has been shown to provide a good description of the US monetary policy since 1987. Following the now extensive literature on asset prices and monetary policy (see, for example, (Cecchetti, Genberg, Lipsky, and Wadhvani 2000)), we also look at the results for a Taylor rule that includes a reaction to asset prices (TR+q). The coefficient on asset prices is 0.1, as in (Bernanke and Gertler 1999).

Several authors have concluded that monetary policy responds to the expected value of inflation rather than to current or past inflation (see, for example, (Clarida, Galí, and Gertler 2000)). (Levin, Wieland, and Williams 2003) provide a discussion of the rationale and robustness of inflation-forecast based rules. We consider a simple inflation-forecast based policy rule (IFB) where the interest rate responds to deviations of expected inflation from the target. We also experiment an inflation-forecast based rule with an expected output term (IFB+y) and with an expected output term and an asset price term (IFB+y+q). The coefficients in the inflation-forecast based policy rules are as in the Taylor rule, that is, 1.5 coefficient in the expected inflation and 0.5 in the expected output. The coefficient on asset prices is 0.1, again as in (Bernanke and Gertler 1999). We also tried a stronger reaction to expected inflation, with coefficient 2.0 in the case of rule IFB+y+q aggressive. The coefficients on  $E_t\pi_{t+1}$  and  $E_t y_{t+1}$  for forecast-based rules were chosen so as to be close to 1.5, among values for which the algorithm of (Svensson and Williams 2005) could find a solution to the model.

### 3 Soft landing in a Markov-switching economy

In this paper we investigate the limits of simple Taylor-type rules at moderating the disruptive effects of asset market disturbances and whether central banks may have incentives to deviate from the prescriptions of Taylor-type rules. We

do that using the optimal policy, described above, as a benchmark. We only present the results for  $p_{11} = 0.5$  and  $p_{22} = 0.5$ , as we did not find significant differences in our computations for the other combinations of transition probabilities.

We start by computing the unconditional standard deviations of the variables of the model, for the optimal policy and for Taylor-type rules. The results are presented in Table 3. Except for the simple inflation-forecast based rule (IFB), output and its components (consumption and investment) are much more stable under Taylor-type rules than under the optimal policy. From the results in Table 3, we would conclude that the Taylor rule is significantly more effective at stabilising output, but not employment. In fact, output is much more stable (around ten times) under a Taylor rule than under the optimal policy. The performance of the simple inflation-forecast based rule, which, in general, delivers the worst results in terms of volatility, improves significantly when the interest rate reacts to expected output and to asset prices. These results may be related with the findings of (Levin, Wieland, and Williams 2003) that including an output gap term makes inflation-forecast based rules more robust. The real interest rate is always much more stable when policymakers follow Taylor-type rules than when they follow the optimal policy, which may be a sign that the Taylor rules are not aggressive enough.

To analyse the adjustment process of output following the collapse of asset prices, under Taylor-type rules and optimal policy, we investigate the dynamics of the economy when a persistent non-fundamental shock hits the economy. We do this evaluation by means of impulse-response functions, Figure 2 to 8, and by analysing t-steps ahead standard deviations of output following a persistent non-fundamental shock in asset prices, reported in Tables 4 and 5.

Concerning the impulse-response functions, except for the simple inflation-based forecast rule, which seems to produce very unstable patterns, the results are very similar for the whole set of simple Taylor-type rules considered in this

analysis. Therefore, we focus our comparison on Figures 2 and 3.

A non-fundamental shock causes an increase in asset prices, which induces a jump in gross investment and output. As long as the bubble inflates, asset prices, investment and output continue to grow. This overinvestment implies a reduction of the resources available for consumption as found in (Blanchard 2000). When the bubble bursts, investment and asset prices collapse and so does output. However, there are important differences in the magnitude and volatility patterns for the optimal policy (Figure 2 and for the Taylor rule (Figure 3).

The optimal policy motivates a more aggressive monetary policy reaction than the Taylor rule when the economy is hit by a persistent non-fundamental shock — see the lower-left panel. The stronger reaction of the optimal policy guarantees that asset prices stay closer to its equilibrium value under the optimal policy than under the Taylor rule. That behaviour of asset prices implies that investment and output, under the optimal policy, do not deviate as much from their equilibrium values as they do for the Taylor rule. Actually, from the observation of the output impulse-response function (see the lower-right panel of Figure 2) the optimal policy seems to be more effective in smoothing the output path to the steady-state, resulting in a soft landing of the economy after a crash in asset prices. The optimal policy achieves a soft landing by stimulating consumption.

Turning now to the  $t$ -steps ahead standard deviations of output and real interest rate, the results reflect the uncertainty of the agents concerning the future evolution of output and the real interest rate, given that a persistent non-fundamental shock has hit the economy. Table 4 portrays the difference between the hard landing brought about by a Taylor rule and the soft landing under the optimal policy. While the hard landing makes output volatile in the near future, the soft landing increases dispersion in the not so near future.

Longer-term output forecasts will be more accurate under a Taylor rule than under the optimal policy. The lack of aggressiveness of the Taylor rule in the event of an asset price boom-bust episode is also evident on Table 5: the conditional volatility of the real interest rate is always lower under the Taylor rule, i.e., the real interest rate will be harder to forecast under the optimal policy.

## 4 Conclusion

In this paper we tried to give an answer to the following question: Given the possibility of an asset price bubble burst and a subsequent hard landing, what is the optimal monetary policy reaction? When asset prices are driven by non-fundamental shocks, both the optimal policy and the Taylor rule seem to suggest that central banks should keep increasing the real interest rate, and to decrease it sharply when the bubble bursts. However, the Taylor rule suggests a lower increase in the real interest rate. The sharper movements in the real interest rate induced by the optimal policy suggest that the standard Taylor rule may be not aggressive enough in the event of an asset price boom-bust episode.

Our results suggest that overall Taylor-type rules may be very effective at stabilizing output and the real interest rate. However, they also indicate that if central banks do care about output future's path and aim at a softlanding — which according to (Meyer 2004), (Greenspan 2007) and (Woodford 2007) seems to be the case — following a bubble burst they increase liquidity more than the Taylor rule prescribes. These conclusions seem to be in accordance with previous findings in the literature on monetary policy and asset prices (Mishkin 2007) and suggest that further research on the relation between deviations from the Taylor rule and volatility in financial markets may be

justified.

## References

- Alexandre, F. and P. Bação (2005). Monetary policy, asset prices and uncertainty. *Economics Letters* 86(1), 37–42.
- Alexandre, F., P. Bação, and J. Driffill (2007). Optimal monetary policy with a regime-switching exchange rate in a forward-looking model. *Estudos do GEMF*, n.9.
- Bernanke, B. and M. Gertler (1999). Monetary policy and asset price volatility. *Federal Reserve Bank of Kansas City Economic Review* 84(4), 17–51.
- Bernanke, B. S. (2004). The Great Moderation. Board of Governors of the Federal Reserve System.
- Blanchard, O. (2000). Bubbles, liquidity traps, and monetary policy. In A. S. Posen and R. Mikitani (Eds.), *Japan's Financial Crisis and Its Parallels to US Experience*, pp. 185–193. Institute for International Economics.
- Blinder, A. and R. Reis (2006). Understanding the Greenspan Standard. Jackson Hole Conference, Federal Reserve Bank of Kansas City.
- Bonomo, M. and R. Garcia (1994). Can a well-fitted equilibrium asset-pricing model produce mean reversion? *Journal of Applied Econometrics* 9(4), 19–29.
- Cecchetti, S. G., H. Genberg, J. Lipsky, and S. Wadhvani (2000). *Asset Prices and Central Bank Policy*. London: International Center for Monetary and Banking Studies and CEPR.
- Cecchetti, S. G., P.-S. Lam, and N. C. Mark (1990, June). Mean reversion in equilibrium asset prices. *American Economic Review* 80(3), 398–418.
- Clarida, R., J. Galí, and M. Gertler (2000). Monetary policy rules and macroeconomic stability: Evidence and some theory. *Quarterly Journal of Economics* 115(1), 147–180.



- Driffill, J. and M. Sola (1998). Intrinsic bubbles and regime-switching. *Journal of Monetary Economics* 42(2), 357–373.
- Dupor, W. (2005). Stabilizing non-fundamental asset price movements under discretion and limited information. *Journal of Monetary Economics* 52(4), 727–747.
- Gilchrist, S. and M. Saito (2006). Expectations, asset prices, and monetary policy: The role of learning. NBER Working Paper No. w12442.
- Greenspan, A. (2004). Risk and uncertainty in monetary policy. *American Economic Review* 94(2), 33–40.
- Greenspan, A. (2007). *The Age of Turbulence*. London: Penguin Books.
- Judd, J. and B. Trehan (1995). Has the Fed gotten tougher on inflation. The Federal Reserve Bank of San Francisco Weekly Letter, March 1, Federal Reserve Bank of San Francisco.
- Kim, C.-J. and C. R. Nelson (1999). Has the US economy become more stable? A Bayesian approach based on a Markov-switching model of the business cycle. *Review of Economics and Statistics* 81(4), 608–616.
- Levin, A., V. Wieland, and J. C. Williams (1999). Robustness of simple monetary policy rules under model uncertainty. In J. B. Taylor (Ed.), *Monetary Policy Rules*, NBER Conference Report Series, pp. 263–299. Cambridge, MA: University of Chicago Press.
- Levin, A., V. Wieland, and J. C. Williams (2003). The performance of forecast-based monetary policy rules under model uncertainty. *American Economic Review* 93(3), 622–645.
- McConnell, M. and G. Perez-Quiros (2000). Output fluctuations in the United States: What has changed since the early 1980’s? *American Economic Review* 90(5), 1464–1476.
- Meyer, L. H. (2004). *A Term at the Fed*. New York: HarperCollins.
- Mishkin, F. S. (2007). Housing and the monetary transmission mechanism.

- Technical report, Cambridge, MA. NBER Working Paper No. w13518.
- Rudebusch, G. (2006). Monetary policy inertia: Fact or fiction? Federal Reserve Bank of San Francisco.
- Rudebusch, G. D. and L. E. O. Svensson (1999). Policy rules for inflation targeting. In J. B. Taylor (Ed.), *Monetary Policy Rules*, pp. 203–246. Chicago: University of Chicago Press.
- Shiller, R. J. (2000). *Irrational Exuberance*. Princeton and Oxford: Princeton University Press.
- Stock, J. H. and M. W. Watson (2002). Has the business cycle changed and why? NBER Macroeconomics Annual 2002, MIT Press.
- Svensson, L. E. O. (2003). What is wrong with Taylor rules? using judgment in monetary policy through targeting rules. *Journal of Economic Literature* 41(2), 426–477.
- Svensson, L. E. O. and N. Williams (2005). Monetary policy with model uncertainty: Distribution forecast targeting. NBER Working Paper No. w11733.
- Taylor, J. B. (1993). Discretion versus policy rules in practice. *Carnegie-Rochester Conference Series on Public Policy* 39, 195–214.
- Taylor, J. B. (Ed.) (1999). *Monetary Policy Rules*, Chicago. University of Chicago Press.
- Taylor, J. B. (2007). The explanatory power of monetary policy rules. NBER Working Paper No. w13685.
- Tetlow, R. J. (2004). Monetary policy, asset prices, and misspecification. Federal Reserve Board.
- Woodford, M. (2007). Forecast targeting as a monetary policy strategy: Policy rules in practice. NBER Working Paper No. w13716.

# Tables

Table 1: Parameters

$\alpha$	$\beta$	$\delta$	$A$	$\sigma_{\epsilon^a}$	$\sigma_{\epsilon^\theta}$	$\sigma_{\underline{a}}$	$\rho_1$	$\rho_2$	$\omega$
0.36	0.95	0.09	1	1.2	0.6	1.5	0.687	0.679	0.5

Table 2: Policy rules and coefficients in the log-linearized model

Rule	$p_{11}$	$p_{22}$	$\pi_t$	$y_t$	$q_t$	$E_t\pi_{t+1}$	$E_t y_{t+1}$
optimal policy	all	all	—	—	—	—	—
TR	all	all	1.5	0.5	—	—	—
TR+q	all	all	1.5	0.5	0.1	—	—
IFB	0.25	0.25	—	—	—	1.5	—
IFB	0.25	0.50	—	—	—	1.5	—
IFB	0.25	0.75	—	—	—	1.7	—
IFB	0.50	0.25	—	—	—	1.9	—
IFB	0.50	0.50	—	—	—	1.6	—
IFB	0.50	0.75	—	—	—	1.8	—
IFB	0.75	all	—	—	—	2.8	—
IFB+y	all	all	—	—	—	1.5	0.5
IFB+y+q	all	all	—	—	0.1	1.5	0.5
IFB+y+q agg.	all	all	—	—	0.1	2.0	0.5

optimal policy: the optimal policy reacts to all state variables and shocks

TR: Taylor rule

IFB: Inflation forecast based rule

all: 0.25, 0.5, 0.75

Table 3: Unconditional standard deviations with  $p_{11} = p_{22} = 0.5$

	optimal	TR	TR+q	IFB	IFB+y	IFB+y+q	IFB+y+q agg.
$c$	0.8483	0.0785	0.0773	0.7578	0.0034	0.0033	0.0054
$n$	1.1605	2.0004	2.0097	2.3162	2.344	2.344	2.3439
$k$	1.2113	0.1107	0.1093	1.4319	0.0122	0.0118	0.0152
$y$	2.4082	0.2449	0.238	1.6335	0.0109	0.01	0.0142
$r.i.r.$	0.8058	0.0866	0.0836	0.2508	0.0018	0.0018	0.0018

Table 4: t-steps ahead standard deviation of output after a persistent non-fundamental shock,  $\sqrt{V(y_t|s_0 = 2)}$ , relative to the optimal policy, with  $p_{11} = p_{22} = 0.5$

$t$	optimal	TR	TR+q	IFB	IFB+y	IFB+y+q	IFB+y+q agg.
1	1	12.7371	11.8506	24.1346	13.894	12.4058	12.8685
2	1	8.4769	7.9536	13.9838	10.1253	9.1209	9.4247
3	1	6.2174	5.8693	9.5364	7.7958	7.0673	7.304
4	1	4.8223	4.5727	7.3275	6.2326	5.6774	5.8748
5	1	3.8854	3.6957	6.0335	5.1253	4.685	4.8542
6	1	3.2189	3.0673	5.107	4.3071	3.9461	4.0925
7	1	2.723	2.5968	4.3845	3.6805	3.3764	3.5032
8	1	2.3404	2.2316	3.9043	3.186	2.9238	3.0336
9	1	2.036	1.9397	3.7901	2.7852	2.5551	2.6498
10	1	1.7874	1.7005	4.1034	2.4531	2.2484	2.3296
11	1	1.5801	1.5004	4.7562	2.1729	1.9888	2.0579
12	1	1.404	1.3304	5.5896	1.9328	1.7658	1.8243
13	1	1.2524	1.1839	6.4637	1.7244	1.5722	1.6212
14	1	1.1203	1.0563	7.2744	1.542	1.4026	1.4431
15	1	1.0041	0.9443	7.9442	1.3808	1.2529	1.286
16	1	0.9012	0.8453	8.4152	1.2378	1.1201	1.1468
17	1	0.8096	0.7573	8.6487	1.1101	1.0019	1.0228
18	1	0.7276	0.6788	8.6288	0.9959	0.8963	0.9123
19	1	0.6541	0.6086	8.3729	0.8934	0.8017	0.8135
20	1	0.588	0.5457	7.9487	0.8014	0.7171	0.7252

Table 5: t-steps ahead standard deviation of the real interest rate after a persistent non-fundamental shock,  $\sqrt{V(y_t|s_0 = 2)}$ , relative to the optimal policy, with  $p_{11} = p_{22} = 0.5$

$t$	optimal	TR	TR+q	IFB	IFB+y	IFB+y+q	IFB+y+q agg.
1	1	0.7954	0.818	0.0869	0.8566	0.8811	0.886
2	1	0.7425	0.7667	0.0958	0.7459	0.7809	0.7866
3	1	0.7109	0.736	0.1335	0.6826	0.7233	0.7293
4	1	0.6901	0.7156	0.1956	0.6416	0.6856	0.6916
5	1	0.6765	0.7022	0.278	0.6147	0.6604	0.6666
6	1	0.6684	0.6941	0.3758	0.5982	0.6446	0.6512
7	1	0.6647	0.6901	0.4836	0.59	0.6361	0.6433
8	1	0.6642	0.6895	0.5942	0.5884	0.6336	0.6418
9	1	0.6663	0.6913	0.6997	0.5918	0.6358	0.6453
10	1	0.6701	0.6949	0.7913	0.599	0.6417	0.6528
11	1	0.675	0.6997	0.8618	0.609	0.6504	0.6635
12	1	0.6805	0.7052	0.9094	0.6208	0.661	0.6765
13	1	0.686	0.7108	0.9462	0.6336	0.6727	0.691
14	1	0.6909	0.716	1.0118	0.6466	0.685	0.7062
15	1	0.6949	0.7203	1.1784	0.659	0.6969	0.7215
16	1	0.6972	0.7232	1.5186	0.6702	0.7078	0.736
17	1	0.6975	0.724	2.0631	0.6794	0.717	0.7489
18	1	0.695	0.7221	2.8038	0.6859	0.7237	0.7593
19	1	0.6892	0.7171	3.7142	0.6889	0.7271	0.7665
20	1	0.6797	0.7082	4.754	0.6877	0.7265	0.7697

Figure 1: Federal funds rate target and the target computed using Taylor's rule

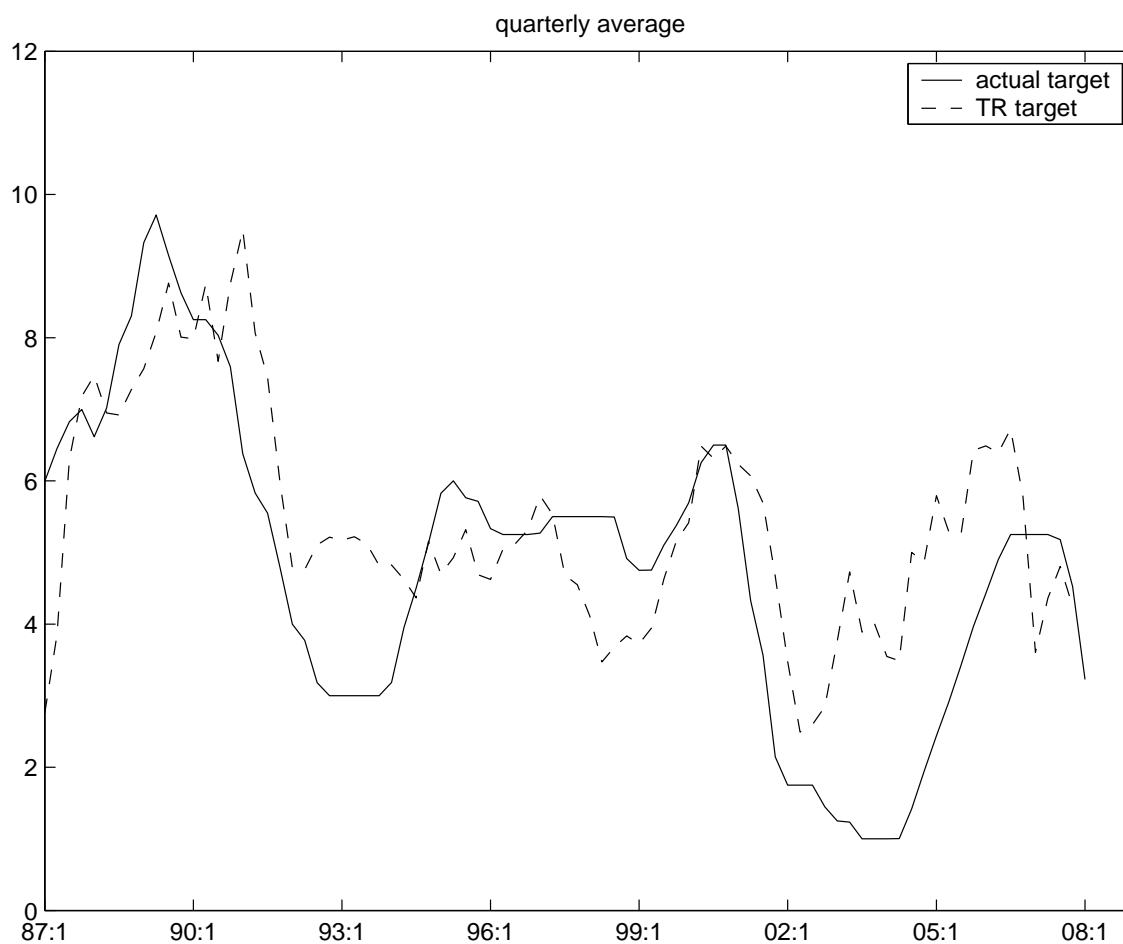




Figure 2: Impulse-response functions when there is a persistent non-fundamental shock in period 1 and the policymaker employs the optimal policy

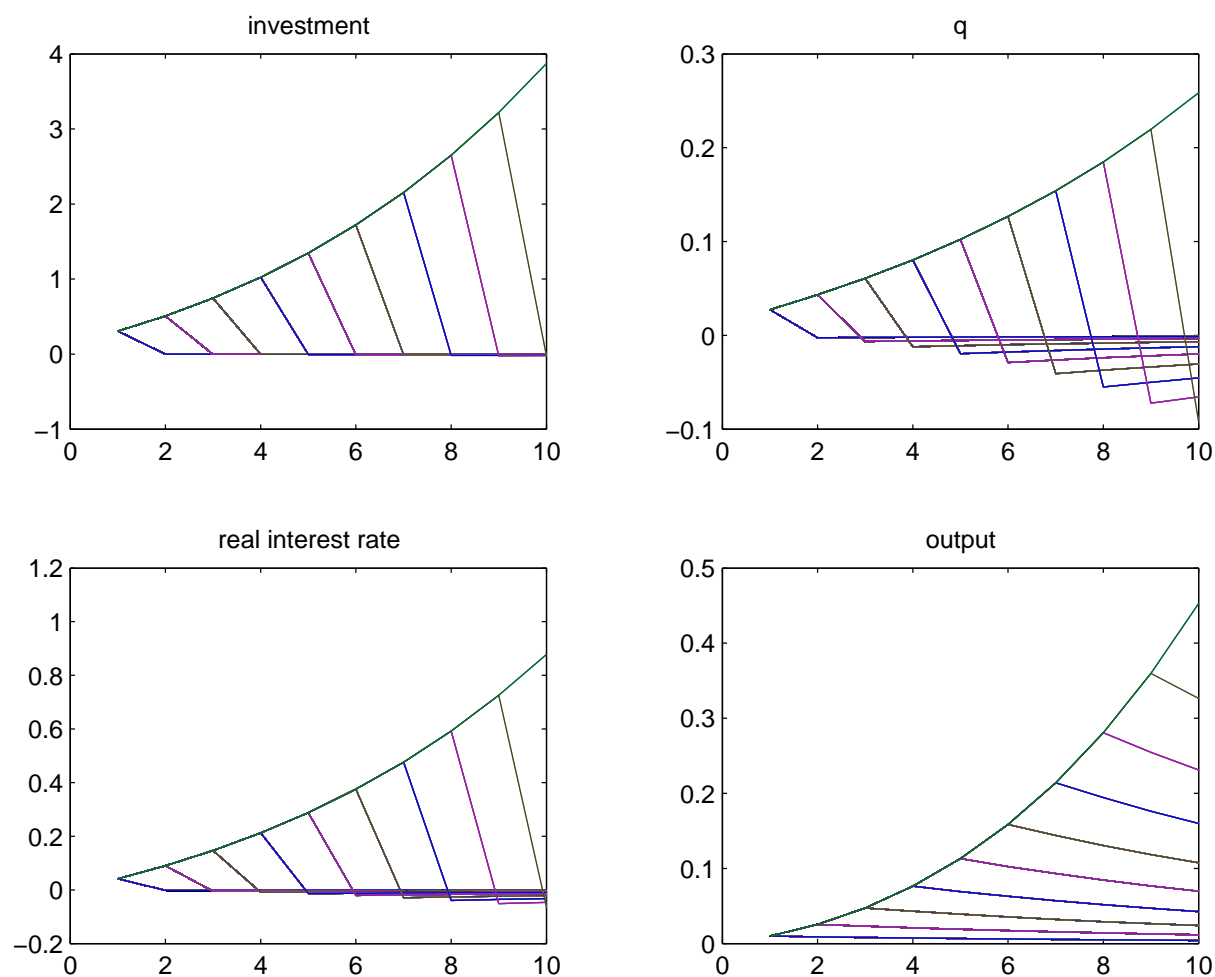


Figure 3: Impulse-response functions when there is a persistent non-fundamental shock in period 1 and the policymaker employs the TR

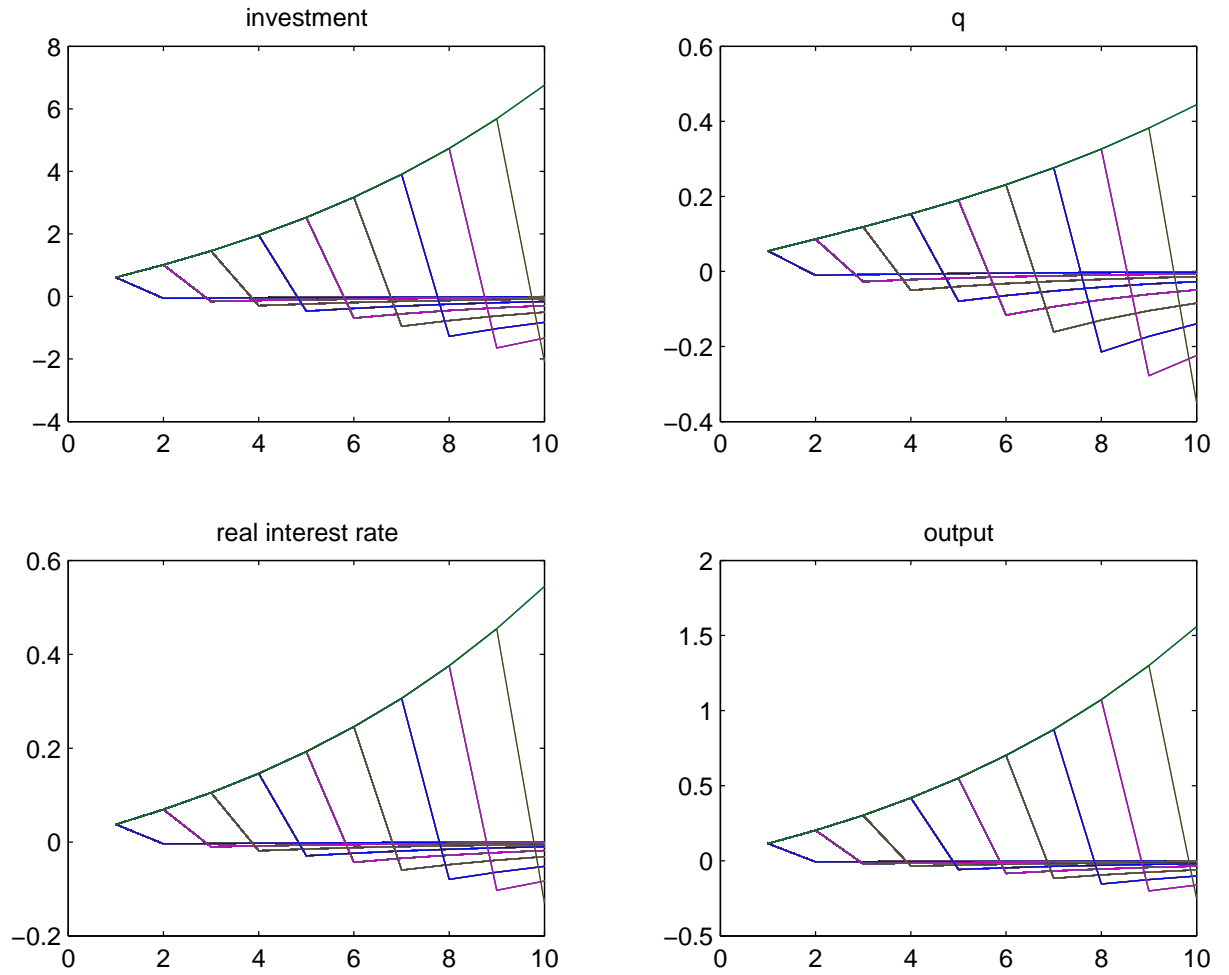


Figure 4: Impulse-response functions when there is a persistent non-fundamental shock in period 1 and the policymaker employs the TR+q

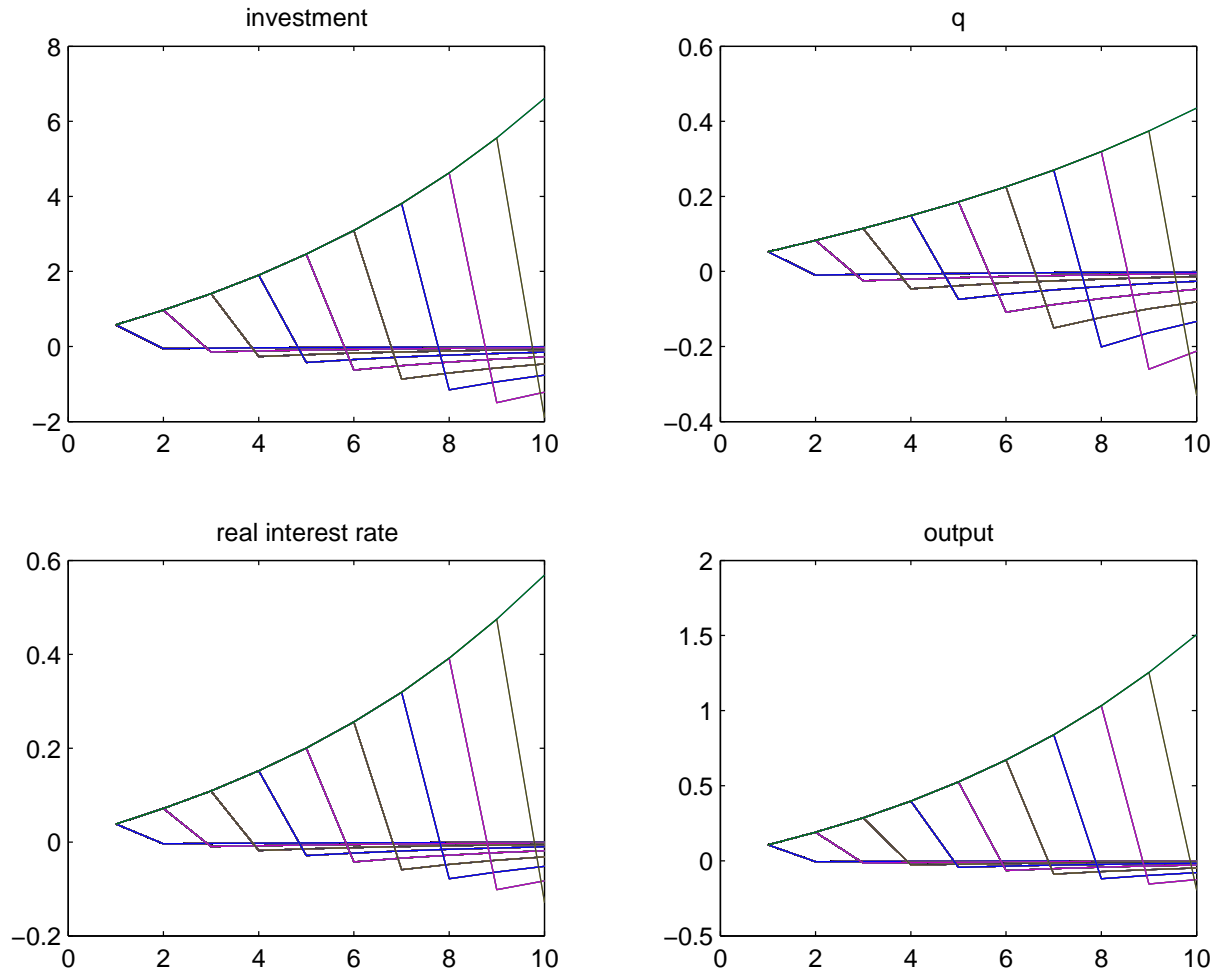


Figure 5: Impulse-response functions when there is a persistent non-fundamental shock in period 1 and the policymaker employs the IFB

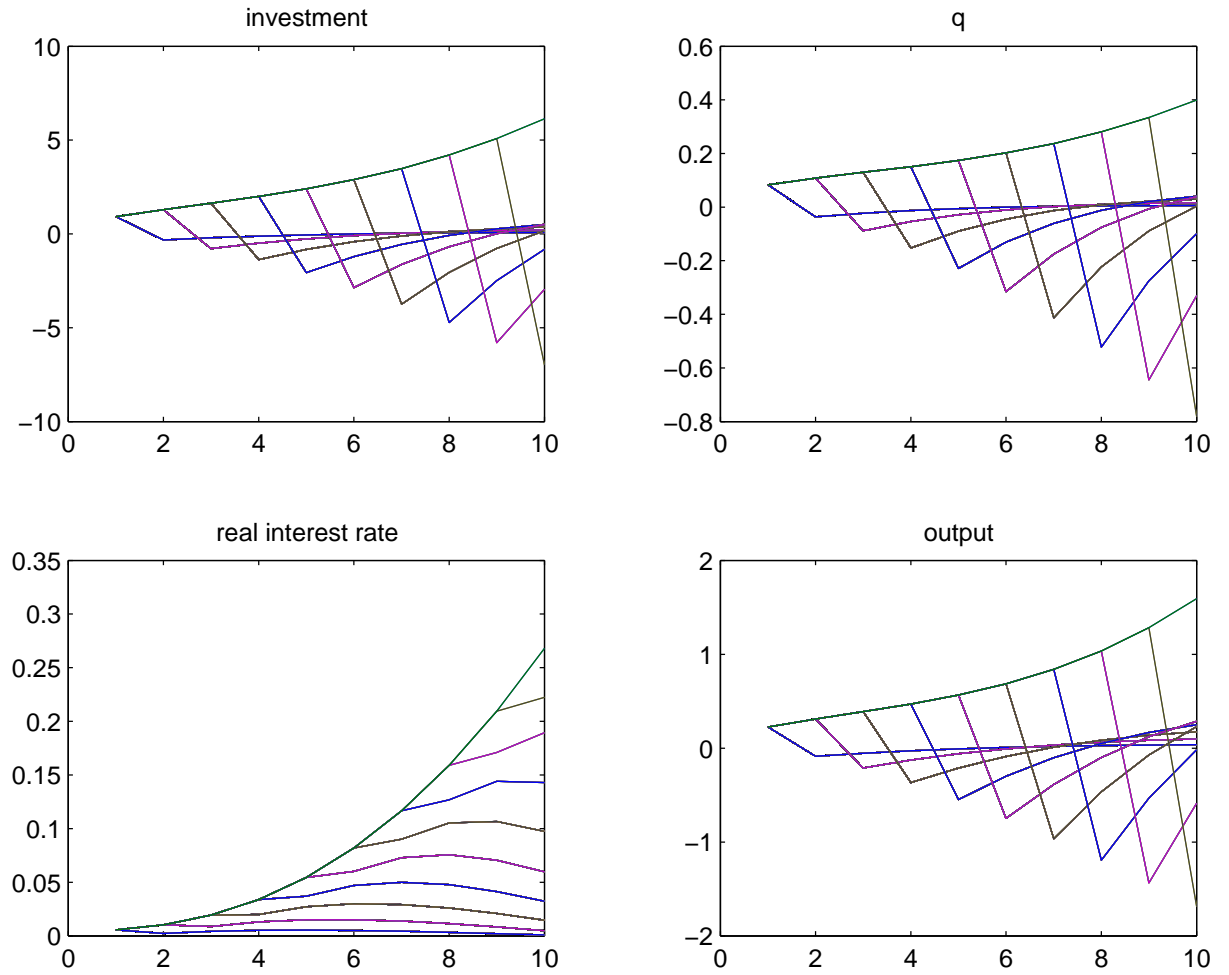


Figure 6: Impulse-response functions when there is a persistent non-fundamental shock in period 1 and the policymaker employs the IFB+y

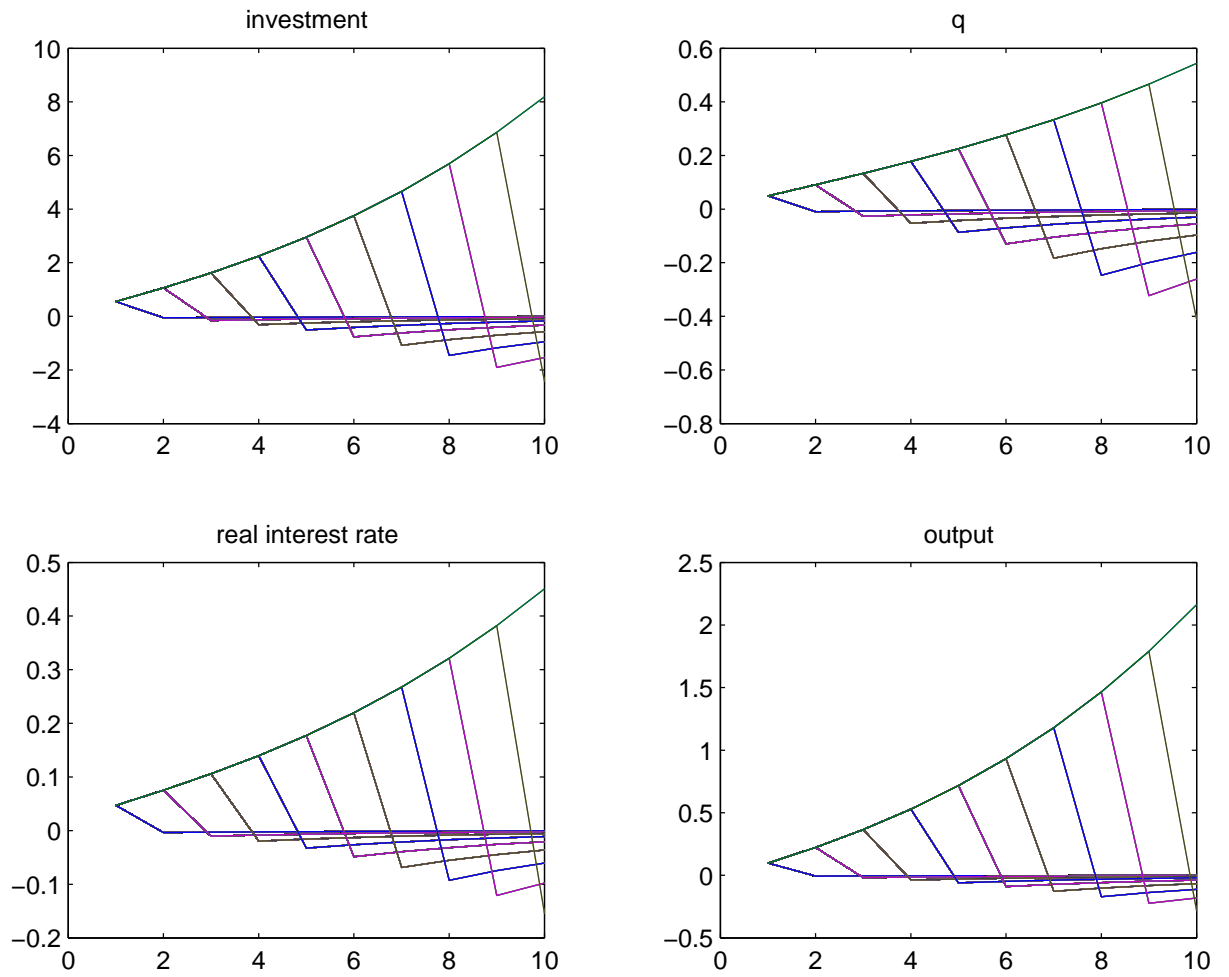


Figure 7: Impulse-response functions when there is a persistent non-fundamental shock in period 1 and the policymaker employs the IFB+y+q

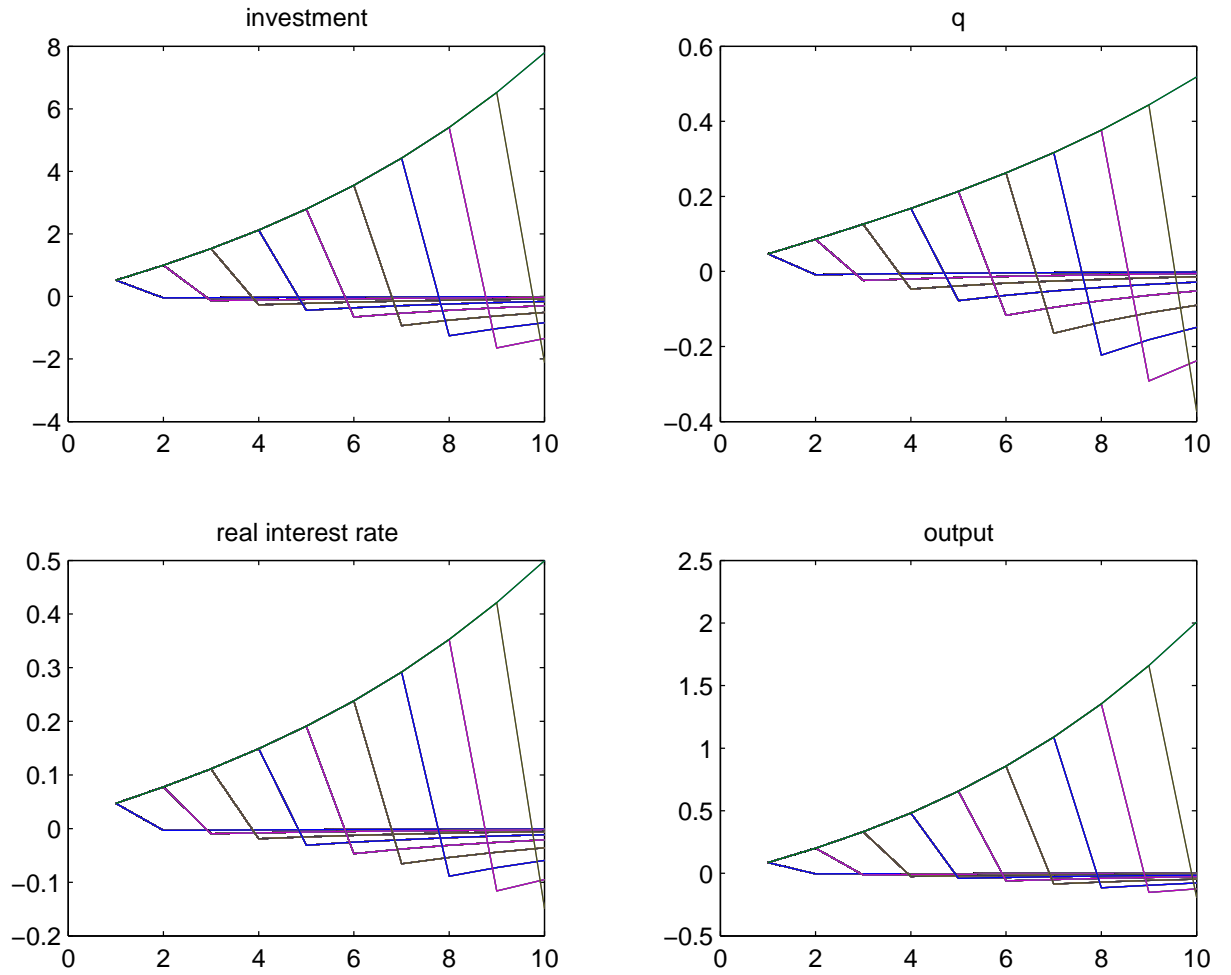
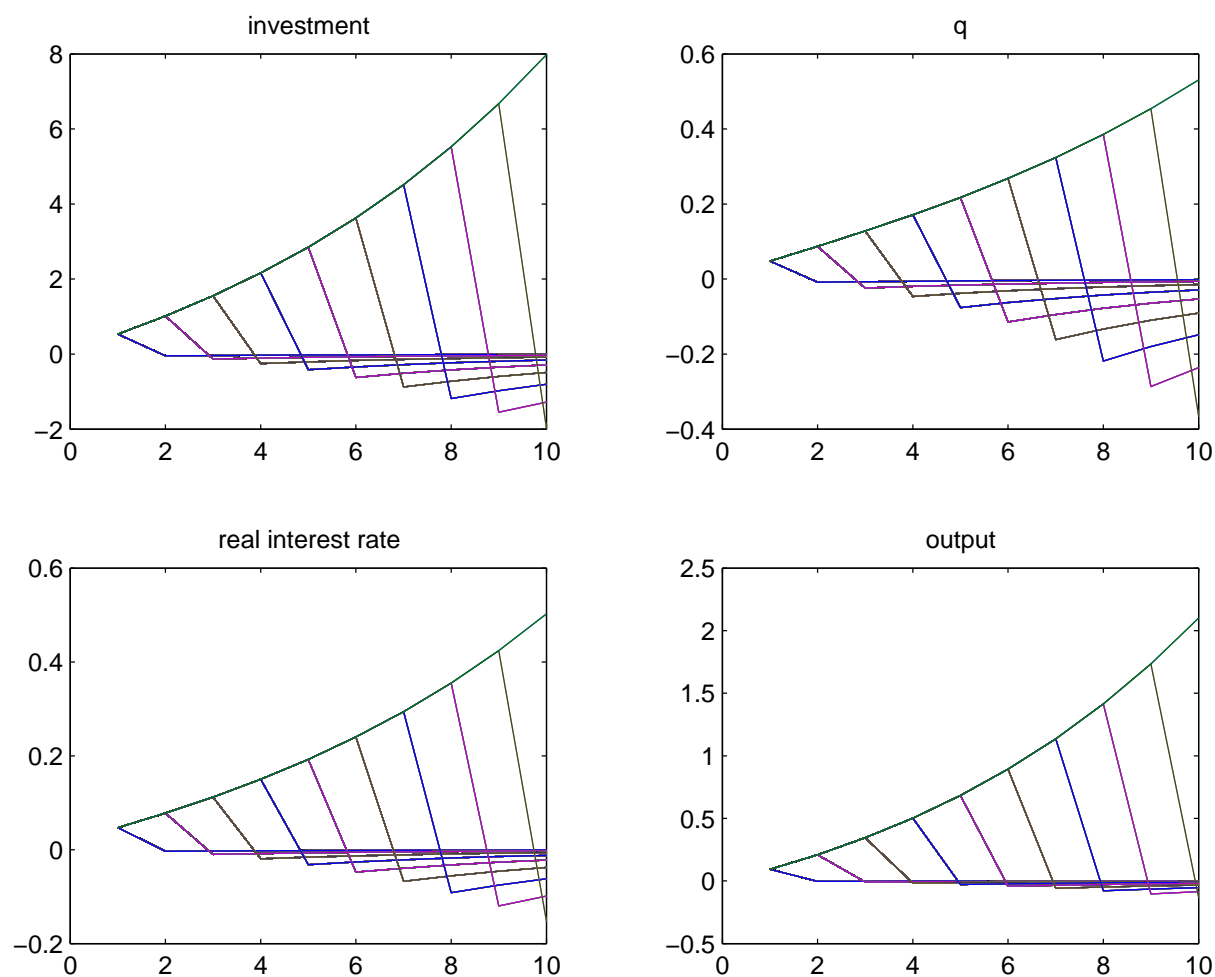


Figure 8: Impulse-response functions when there is a persistent non-fundamental shock in period 1 and the policymaker employs the aggressive IFB+y+q



## ESTUDOS DO G.E.M.F.

(Available on-line at <http://gemf.fe.uc.pt>)

- 
- 2008-02 *Taylor-type rules versus optimal policy in a Markov-switching economy*  
- Fernando Alexandre, Pedro Bação & Vasco Gabriel
- 2008-01 *Entry and exit as a source of aggregate productivity growth in two alternative technological regimes*  
- Carlos Carreira & Paulino Teixeira
- 2007-09 *Optimal monetary policy with a regime-switching exchange rate in a forward-looking model*  
- Fernando Alexandre, Pedro Bação & John Driffill
- 2007-08 *Estrutura económica, intensidade energética e emissões de CO<sub>2</sub>: Uma abordagem Input-Output*  
- Luís Cruz & Eduardo Barata
- 2007-07 *The Stability and Growth Pact, Fiscal Policy Institutions, and Stabilization in Europe*  
- Carlos Fonseca Marinheiro
- 2007-06 *The Consumption-Wealth Ratio Under Asymmetric Adjustment*  
- Vasco J. Gabriel, Fernando Alexandre & Pedro Bação
- 2007-05 *European Integration and External Sustainability of the European Union An application of the thesis of Feldstein-Horioka*  
- João Sousa Andrade
- 2007-04 *Uma Aplicação da Lei de Okun em Portugal*  
- João Sousa Andrade
- 2007-03 *Education and growth: an industry-level analysis of the Portuguese manufacturing sector*  
- Marta Simões & Adelaide Duarte
- 2007-02 *Levels of education, growth and policy complementarities*  
- Marta Simões & Adelaide Duarte
- 2007-01 *Internal and External Restructuring over the Cycle: A Firm-Based Analysis of Gross Flows and Productivity Growth in Portugal*  
- Carlos Carreira & Paulino Teixeira
- 2006-09 *Cost Structure of the Portuguese Water Industry: a Cubic Cost Function Application*  
- Rita Martins, Adelino Fortunato & Fernando Coelho
- 2006-08 *The Impact of Works Councils on Wages*  
- John T. Addison, Paulino Teixeira & Thomas Zwick
- 2006-07 *Ricardian Equivalence, Twin Deficits, and the Feldstein-Horioka puzzle in Egypt*  
- Carlos Fonseca Marinheiro
- 2006-06 *L'intégration des marchés financiers*  
- José Soares da Fonseca
- 2006-05 *The Integration of European Stock Markets and Market Timing*  
- José Soares da Fonseca
- 2006-04 *Mobilidade do Capital e Sustentabilidade Externa – uma aplicação da tese de F-H a Portugal (1910-2004)*  
- João Sousa Andrade
- 2006-03 *Works Councils, Labor Productivity and Plant Heterogeneity: First Evidence from Quantile Regressions*  
- Joachim Wagner, Thorsten Schank, Claus Schnabel & John T. Addison
- 2006-02 *Does the Quality of Industrial Relations Matter for the Macroeconomy? A Cross-Country Analysis Using Strikes Data*  
- John T. Addison & Paulino Teixeira
- 2006-01 *Monte Carlo Estimation of Project Volatility for Real Options Analysis*  
- Pedro Manuel Cortesão Godinho



- 
- 2005-17 *On the Stability of the Wealth Effect*  
- Fernando Alexandre, Pedro Bação & Vasco J. Gabriel
- 2005-16 *Building Blocks in the Economics of Mandates*  
- John T. Addison, C. R. Barrett & W. S. Siebert
- 2005-15 *Horizontal Differentiation and the survival of Train and Coach modes in medium range passenger transport, a welfare analysis comprising economies of scope and scale*  
- Adelino Fortunato & Daniel Murta
- 2005-14 *'Atypical Work' and Compensation*  
- John T. Addison & Christopher J. Surfield
- 2005-13 *The Demand for Labor: An Analysis Using Matched Employer-Employee Data from the German LIAB. Will the High Unskilled Worker Own-Wage Elasticity Please Stand Up?*  
- John T. Addison, Lutz Bellmann, Thorsten Schank & Paulino Teixeira
- 2005-12 *Works Councils in the Production Process*  
- John T. Addison, Thorsten Schank, Claus Schnabel & Joachim Wagner
- 2005-11 *Second Order Filter Distribution Approximations for Financial Time Series with Extreme Outliers*  
- J. Q. Smith & António A. F. Santos
- 2005-10 *Firm Growth and Persistence of Chance: Evidence from Portuguese Microdata*  
- Blandina Oliveira & Adelino Fortunato
- 2005-09 *Residential water demand under block rates – a Portuguese case study*  
- Rita Martins & Adelino Fortunato
- 2005-08 *Politico-Economic Causes of Labor Regulation in the United States: Alliances and Raising Rivals' Costs (and Sometimes Lowering One's Own)*  
- John T. Addison
- 2005-07 *Firm Growth and Liquidity Constraints: A Dynamic Analysis*  
- Blandina Oliveira & Adelino Fortunato
- 2005-06 *The Effect of Works Councils on Employment Change*  
- John T. Addison & Paulino Teixeira
- 2005-05 *Le Rôle de la Consommation Publique dans la Croissance: le cas de l'Union Européenne*  
- João Sousa Andrade, Maria Adelaide Silva Duarte & Claude Berthomieu
- 2005-04 *The Dynamics of the Growth of Firms: Evidence from the Services Sector*  
- Blandina Oliveira & Adelino Fortunato
- 2005-03 *The Determinants of Firm Performance: Unions, Works Councils, and Employee Involvement/High Performance Work Practices*  
- John T. Addison
- 2005-02 *Has the Stability and Growth Pact stabilised? Evidence from a panel of 12 European countries and some implications for the reform of the Pact*  
- Carlos Fonseca Marinheiro
- 2005-01 *Sustainability of Portuguese Fiscal Policy in Historical Perspective*  
- Carlos Fonseca Marinheiro
- 2004-03 *Human capital, mechanisms of technological diffusion and the role of technological shocks in the speed of diffusion. Evidence from a panel of Mediterranean countries*  
- Maria Adelaide Duarte & Marta Simões
- 2004-02 *What Have We Learned About The Employment Effects of Severance Pay? Further Iterations of Lazear et al.*  
- John T. Addison & Paulino Teixeira

- 
- 2004-01 *How the Gold Standard Functioned in Portugal: an analysis of some macroeconomic aspects*  
- António Portugal Duarte & João Sousa Andrade
- 2003-07 *Testing Gibrat's Law: Empirical Evidence from a Panel of Portuguese Manufacturing Firms*  
- Blandina Oliveira & Adelino Fortunato
- 2003-06 *Régimes Monétaires et Théorie Quantitative du Produit Nominal au Portugal (1854-1998)*  
- João Sousa Andrade
- 2003-05 *Causas do Atraso na Estabilização da Inflação: Abordagem Teórica e Empírica*  
- Vítor Castro
- 2003-04 *The Effects of Households' and Firms' Borrowing Constraints on Economic Growth*  
- Maria da Conceição Costa Pereira
- 2003-03 *Second Order Filter Distribution Approximations for Financial Time Series with Extreme Outliers*  
- J. Q. Smith & António A. F. Santos
- 2003-02 *Output Smoothing in EMU and OECD: Can We Forego Government Contribution? A risk sharing approach*  
- Carlos Fonseca Marinheiro
- 2003-01 *Um modelo VAR para uma Avaliação Macroeconómica de Efeitos da Integração Europeia da Economia Portuguesa*  
- João Sousa Andrade
- 2002-08 *Discrimination des facteurs potentiels de croissance et type de convergence de l'économie portugaise dans l'UE à travers la spécification de la fonction de production macro-économique. Une étude appliquée de données de panel et de séries temporelles*  
- Marta Simões & Maria Adelaide Duarte
- 2002-07 *Privatisation in Portugal: employee owners or just happy employees?*  
- Luís Moura Ramos & Rita Martins
- 2002-06 *The Portuguese Money Market: An analysis of the daily session*  
- Fátima Teresa Sol Murta
- 2002-05 *As teorias de ciclo políticos e o caso português*  
- Rodrigo Martins
- 2002-04 *Fundos de acções internacionais: uma avaliação de desempenho*  
- Nuno M. Silva
- 2002-03 *The consistency of optimal policy rules in stochastic rational expectations models*  
- David Backus & John Driffill
- 2002-02 *The term structure of the spreads between Portuguese and German interest rates during stage II of EMU*  
- José Soares da Fonseca
- 2002-01 *O processo desinflationista português: análise de alguns custos e benefícios*  
- António Portugal Duarte
- 2001-14 *Equity prices and monetary policy: an overview with an exploratory model*  
- Fernando Alexandre & Pedro Baçãõ
- 2001-13 *A convergência das taxas de juro portuguesas para os níveis europeus durante a segunda metade da década de noventa*  
- José Soares da Fonseca

- 2001-12 *Le rôle de l'investissement dans l'éducation sur la croissance selon différentes spécifications du capital humain.*  
- Adelaide Duarte & Marta Simões
- 2001-11 *Ricardian Equivalence: An Empirical Application to the Portuguese Economy*  
- Carlos Fonseca Marinheiro
- 2001-10 *A Especificação da Função de Produção Macro-Económica em Estudos de Crescimento Económico.*  
- Maria Adelaide Duarte e Marta Simões
- 2001-09 *Eficácia da Análise Técnica no Mercado Accionista Português*  
- Nuno Silva
- 2001-08 *The Risk Premiums in the Portuguese Treasury Bills Interest Rates: Estimation by a cointegration method*  
- José Soares da Fonseca
- 2001-07 *Principais factores de crescimento da economia portuguesa no espaço europeu*  
- Maria Adelaide Duarte e Marta Simões
- 2001-06 *Inflation Targeting and Exchange Rate Co-ordination*  
- Fernando Alexandre, John Driffill e Fabio Spagnolo
- 2001-05 *Labour Market Transition in Portugal, Spain, and Poland: A Comparative Perspective*  
- Paulino Teixeira
- 2001-04 *Paridade do Poder de Compra e das Taxas de Juro: Um estudo aplicado a três países da UEM*  
- António Portugal Duarte
- 2001-03 *Technology, Employment and Wages*  
- John T. Addison & Paulino Teixeira
- 2001-02 *Human capital investment through education and economic growth. A panel data analysis based on a group of Latin American countries*  
- Maria Adelaide Duarte & Marta Simões
- 2001-01 *Risk Premiums in the Portuguese Treasury Bills Interest Rates from 1990 to 1998. An ARCH-M Approach*  
- José Soares da Fonseca
- 2000-08 *Identificação de Vectores de Cointegração: Análise de Alguns Exemplos*  
- Pedro Miguel Avelino Bação
- 2000-07 *Imunização e M-quadrado: Que relação?*  
- Jorge Cunha
- 2000-06 *Eficiência Informacional nos Futuros Lisbor 3M*  
- Nuno M. Silva
- 2000-05 *Estimation of Default Probabilities Using Incomplete Contracts Data*  
- J. Santos Silva & J. Murteira
- 2000-04 *Un Essai d'Application de la Théorie Quantitative de la Monnaie à l'économie portugaise, 1854-1998*  
- João Sousa Andrade
- 2000-03 *Le Taux de Chômage Naturel comme un Indicateur de Politique Economique? Une application à l'économie portugaise*  
- Adelaide Duarte & João Sousa Andrade

- 
- 2000-02 *La Convergence Réelle Selon la Théorie de la Croissance: Quelles Explications pour l'Union Européenne?*  
- Marta Cristina Nunes Simões
- 2000-01 *Política de Estabilização e Independência dos Bancos Centrais*  
- João Sousa Andrade
- 1999-09 *Nota sobre a Estimação de Vectores de Cointegração com os Programas CATS in RATS, PCFIML e EVIEWS*  
- Pedro Miguel Avelino Bação
- 1999-08 *A Abertura do Mercado de Telecomunicações Celulares ao Terceiro Operador: Uma Decisão Racional?*  
- Carlos Carreira
- 1999-07 *Is Portugal Really so Arteriosclerotic? Results from a Cross-Country Analysis of Labour Adjustment*  
- John T. Addison & Paulino Teixeira
- 1999-06 *The Effect of Dismissals Protection on Employment: More on a Vexed Theme*  
- John T. Addison, Paulino Teixeira e Jean-Luc Grosso
- 1999-05 *A Cobertura Estática e Dinâmica através do Contrato de Futuros PSI-20. Estimação das Rácios e Eficácia Ex Post e Ex Ante*  
- Helder Miguel C. V. Sebastião
- 1999-04 *Mobilização de Poupança, Financiamento e Internacionalização de Carteiras*  
- João Sousa Andrade
- 1999-03 *Natural Resources and Environment*  
- Adelaide Duarte
- 1999-02 *L'Analyse Positive de la Politique Monétaire*  
- Christian Aubin
- 1999-01 *Economias de Escala e de Gama nos Hospitais Públicos Portugueses: Uma Aplicação da Função de Custo Variável Translog*  
- Carlos Carreira
- 1998-11 *Equilíbrio Monetário no Longo e Curto Prazos - Uma Aplicação à Economia Portuguesa*  
- João Sousa Andrade
- 1998-10 *Algumas Observações Sobre o Método da Economia*  
- João Sousa Andrade
- 1998-09 *Mudança Tecnológica na Indústria Transformadora: Que Tipo de Viés Afinal?*  
- Paulino Teixeira
- 1998-08 *Portfolio Insurance and Bond Management in a Vasicek's Term Structure of Interest Rates*  
- José Alberto Soares da Fonseca
- 1998-07 *Financial Innovation and Money Demand in Portugal: A Preliminary Study*  
- Pedro Miguel Avelino Bação
- 1998-06 *The Stability Pact and Portuguese Fiscal Policy: the Application of a VAR Model*  
- Carlos Fonseca Marinheiro
- 1998-05 *A Moeda Única e o Processo de Difusão da Base Monetária*  
- José Alberto Soares da Fonseca
- 1998-04 *La Structure par Termes et la Volatilité des Taux d'intérêt LISBOR*  
- José Alberto Soares da Fonseca

- 1998-03 *Regras de Comportamento e Reformas Monetárias no Novo SMI*  
- João Sousa Andrade
- 1998-02 *Um Estudo da Flexibilidade dos Salários: o Caso Espanhol e Português*  
- Adelaide Duarte e João Sousa Andrade
- 1998-01 *Moeda Única e Internacionalização: Apresentação do Tema*  
- João Sousa Andrade
- 1997-09 *Inovação e Aplicações Financeiras em Portugal*  
- Pedro Miguel Avelino Bação
- 1997-08 *Estudo do Efeito Liquidez Aplicado à Economia Portuguesa*  
- João Sousa Andrade
- 1997-07 *An Introduction to Conditional Expectations and Stationarity*  
- Rui Manuel de Almeida
- 1997-06 *Definição de Moeda e Efeito Berlusconi*  
- João Sousa Andrade
- 1997-05 *A Estimação do Risco na Escolha dos Portafólios: Uma Visão Selectiva*  
- António Alberto Ferreira dos Santos
- 1997-04 *A Previsão Não Paramétrica de Taxas de Rentabilidade*  
- Pedro Manuel Cortesão Godinho
- 1997-03 *Propriedades Assintóticas de Densidades*  
- Rui Manuel de Almeida
- 1997-02 *Co-Integration and VAR Analysis of the Term Structure of Interest Rates: an empirical study of the Portuguese money and bond markets*  
- João Sousa Andrade & José Soares da Fonseca
- 1997-01 *Repartição e Capitalização. Duas Modalidades Complementares de Financiamento das Reformas*  
- Maria Clara Murteira
- 1996-08 *A Crise e o Ressurgimento do Sistema Monetário Europeu*  
- Luis Manuel de Aguiar Dias
- 1996-07 *Housing Shortage and Housing Investment in Portugal a Preliminary View*  
- Vítor Neves
- 1996-06 *Housing, Mortgage Finance and the British Economy*  
- Kenneth Gibb & Nile Istephan
- 1996-05 *The Social Policy of The European Community, Reporting Information to Employees, a U.K. perspective: Historical Analysis and Prognosis*  
- Ken Shackleton
- 1996-04 *O Teorema da Equivalência Ricardiana: aplicação à economia portuguesa*  
- Carlos Fonseca Marinheiro
- 1996-03 *O Teorema da Equivalência Ricardiana: discussão teórica*  
- Carlos Fonseca Marinheiro
- 1996-02 *As taxas de juro no MMI e a Restrição das Reservas Obrigatórias dos Bancos*  
- Fátima Assunção Sol e José Alberto Soares da Fonseca
- 1996-01 *Uma Análise de Curto Prazo do Consumo, do Produto e dos Salários*  
- João Sousa Andrade