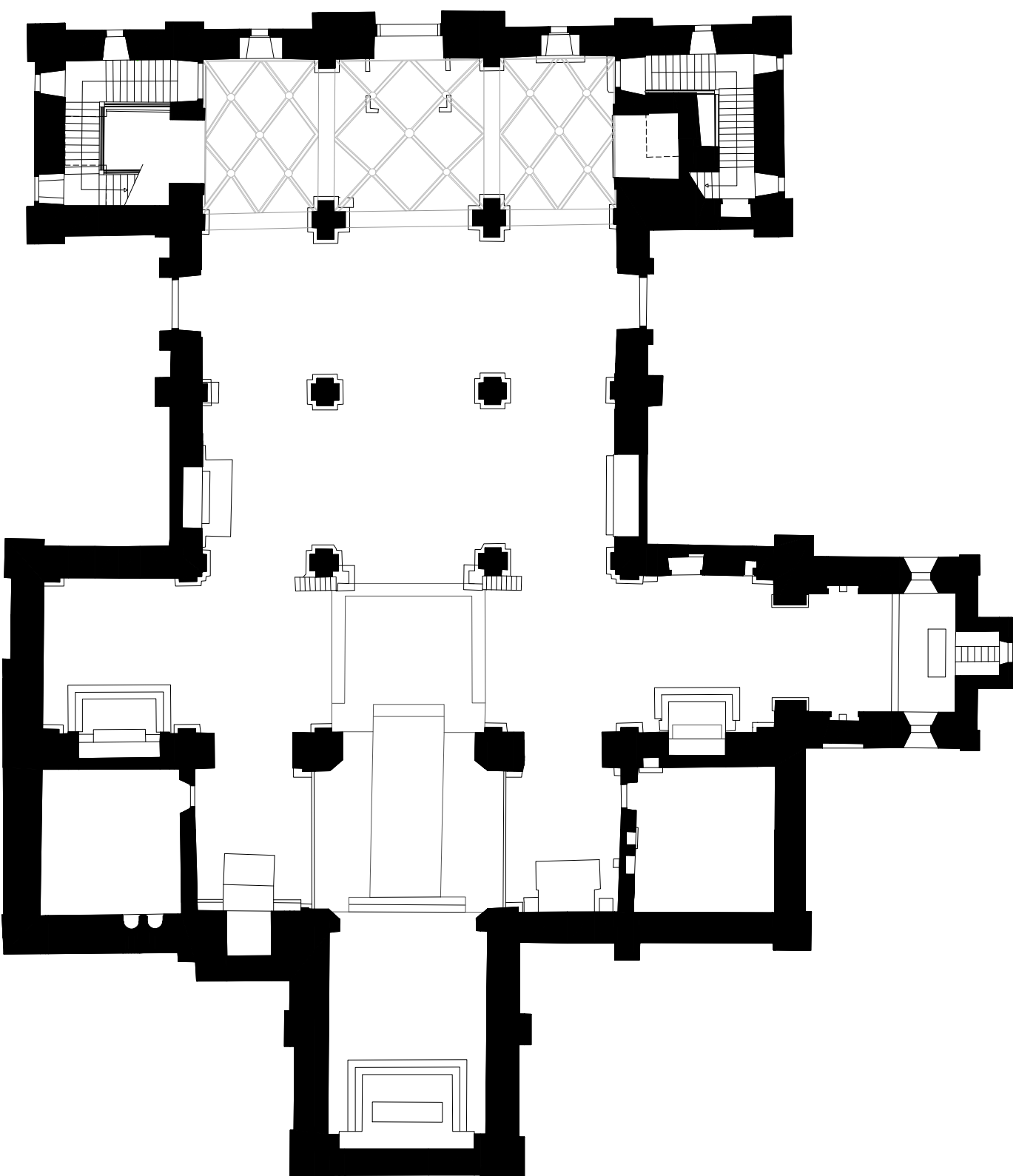
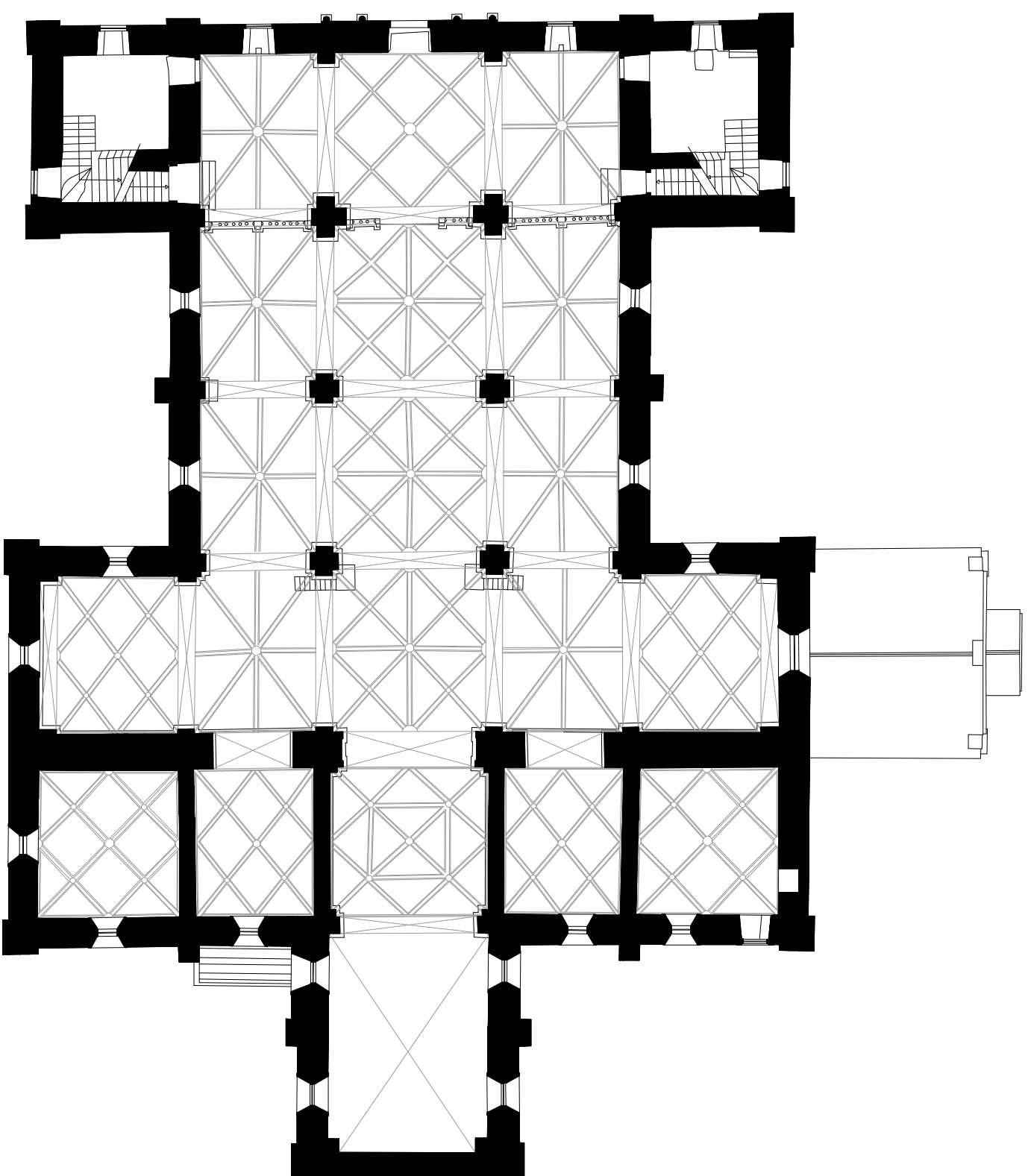


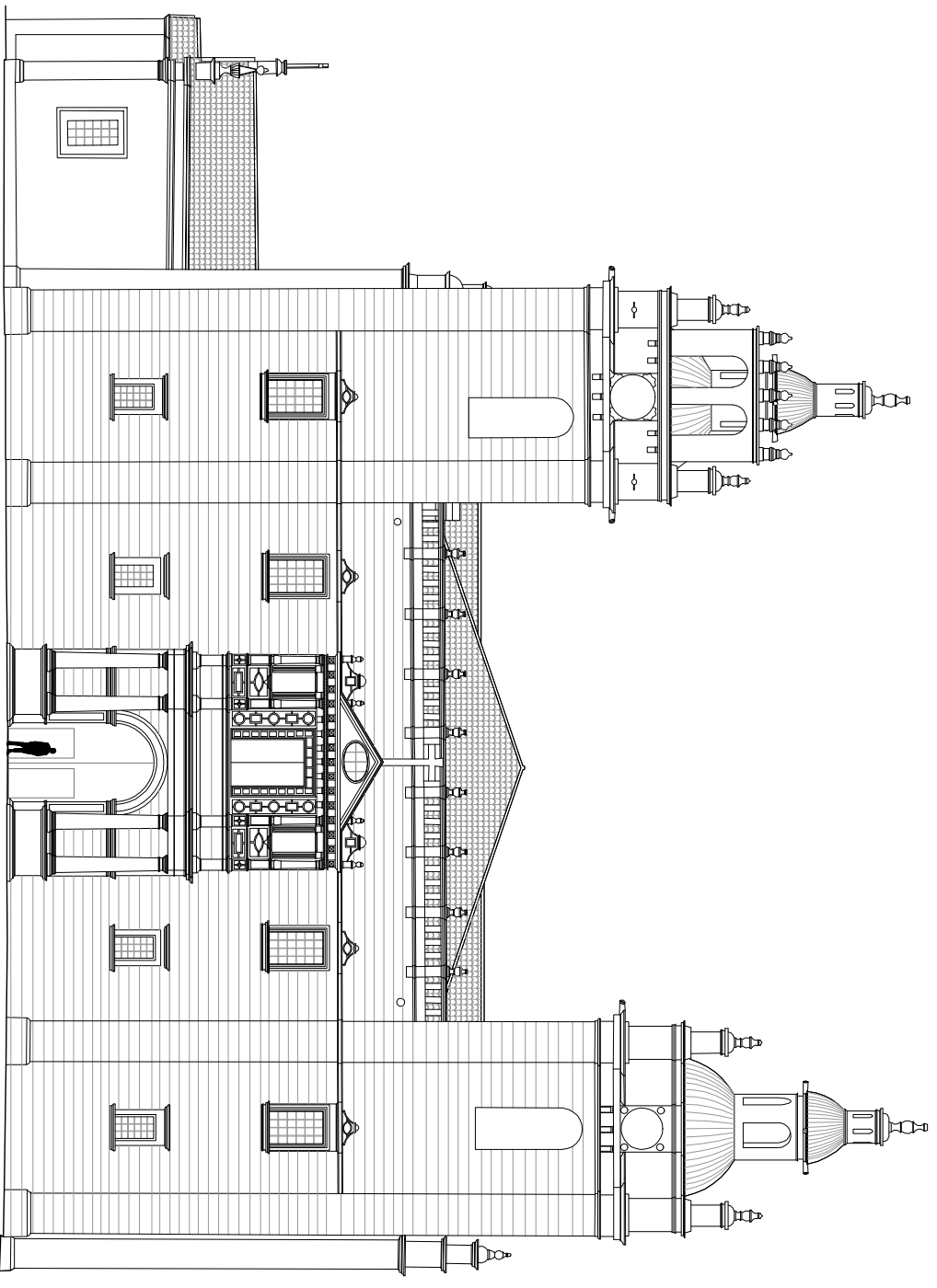
# **Levantamento da SÉ DE MIRANDA DO DOURO**

**Desenhos da DRCH - Direcção de Serviços de Bens Culturais**

**Nota: nos desenhos dos planos arquitectónicos a representação da planta  
de modo a distinguir superfícies planas de abóbadas**







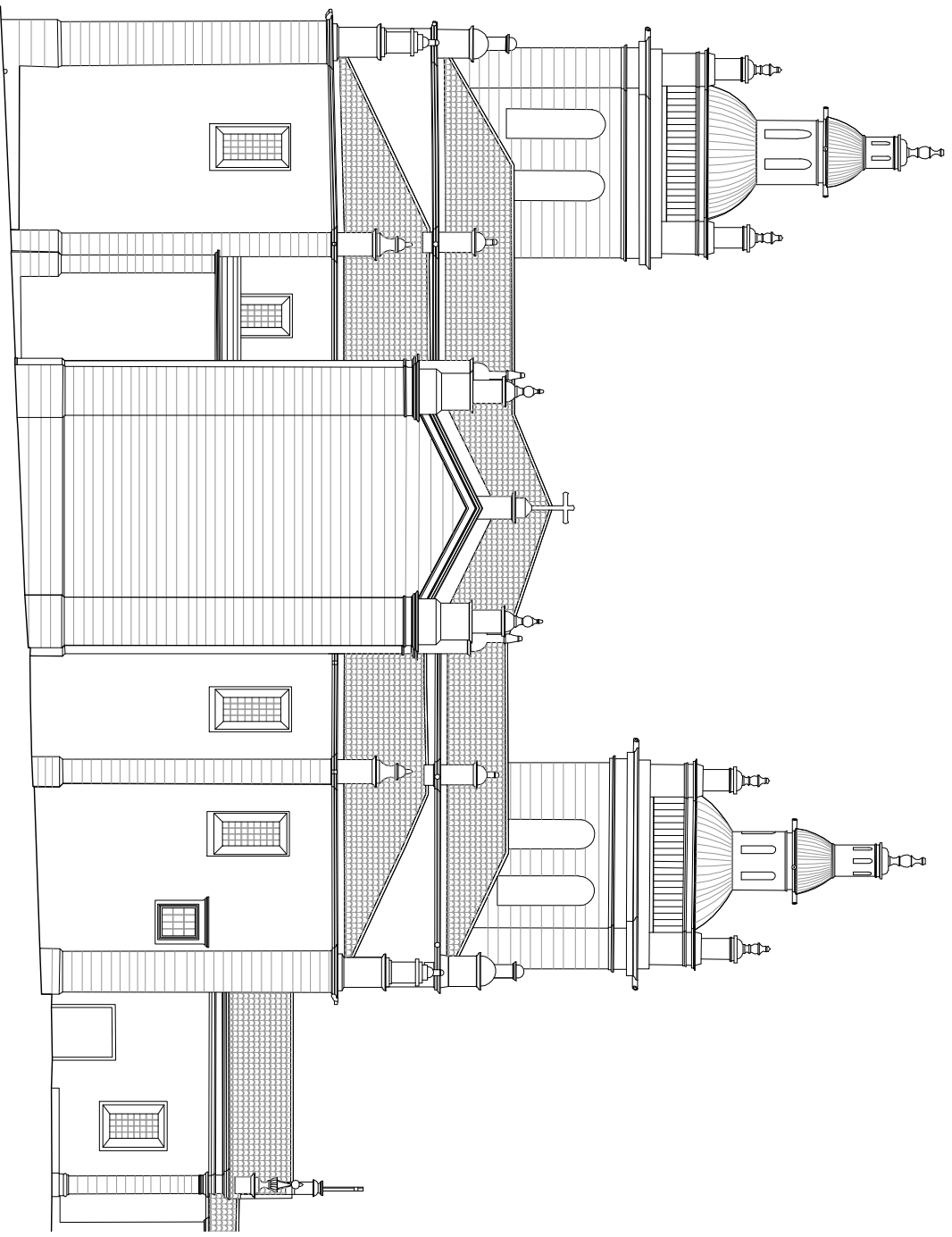
0 1 2 5 10 braças

**As Sés Joaninas \_ Arquitectura episcopal portuguesa na segunda metade do século XVI**

**Sé de Miranda do Douro \_ Fachada principal**

Escala 1:250

Folha 3/8

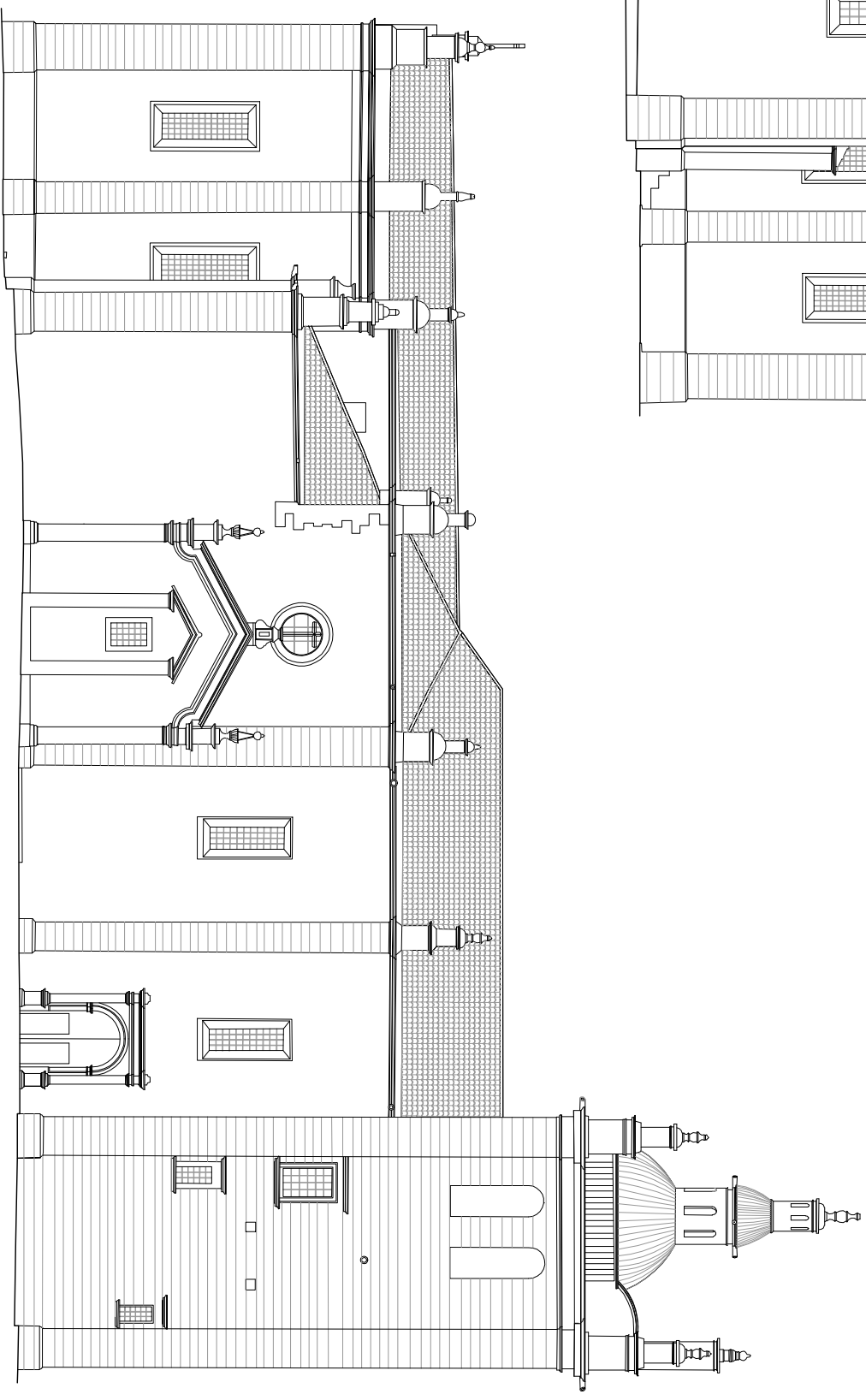
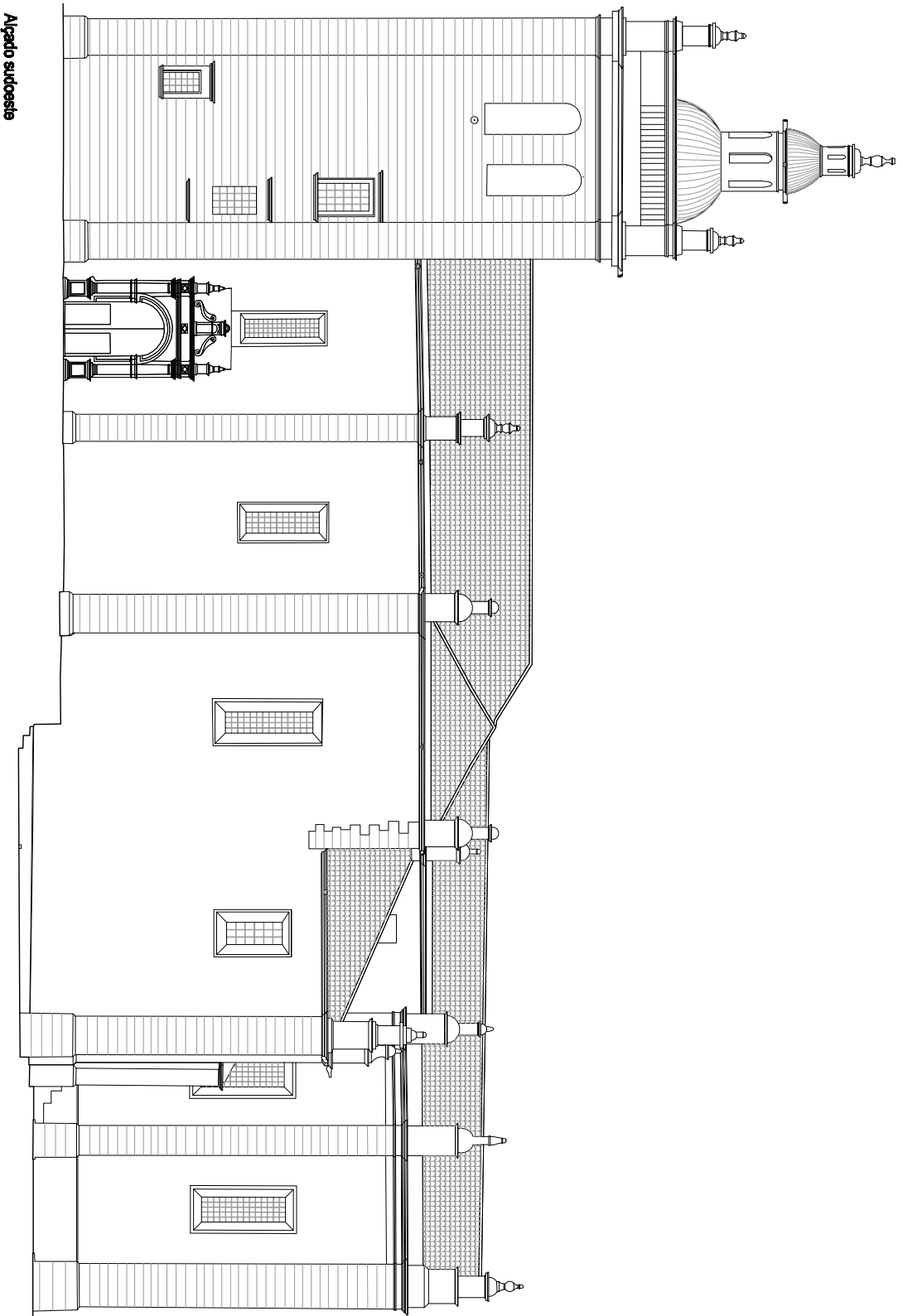


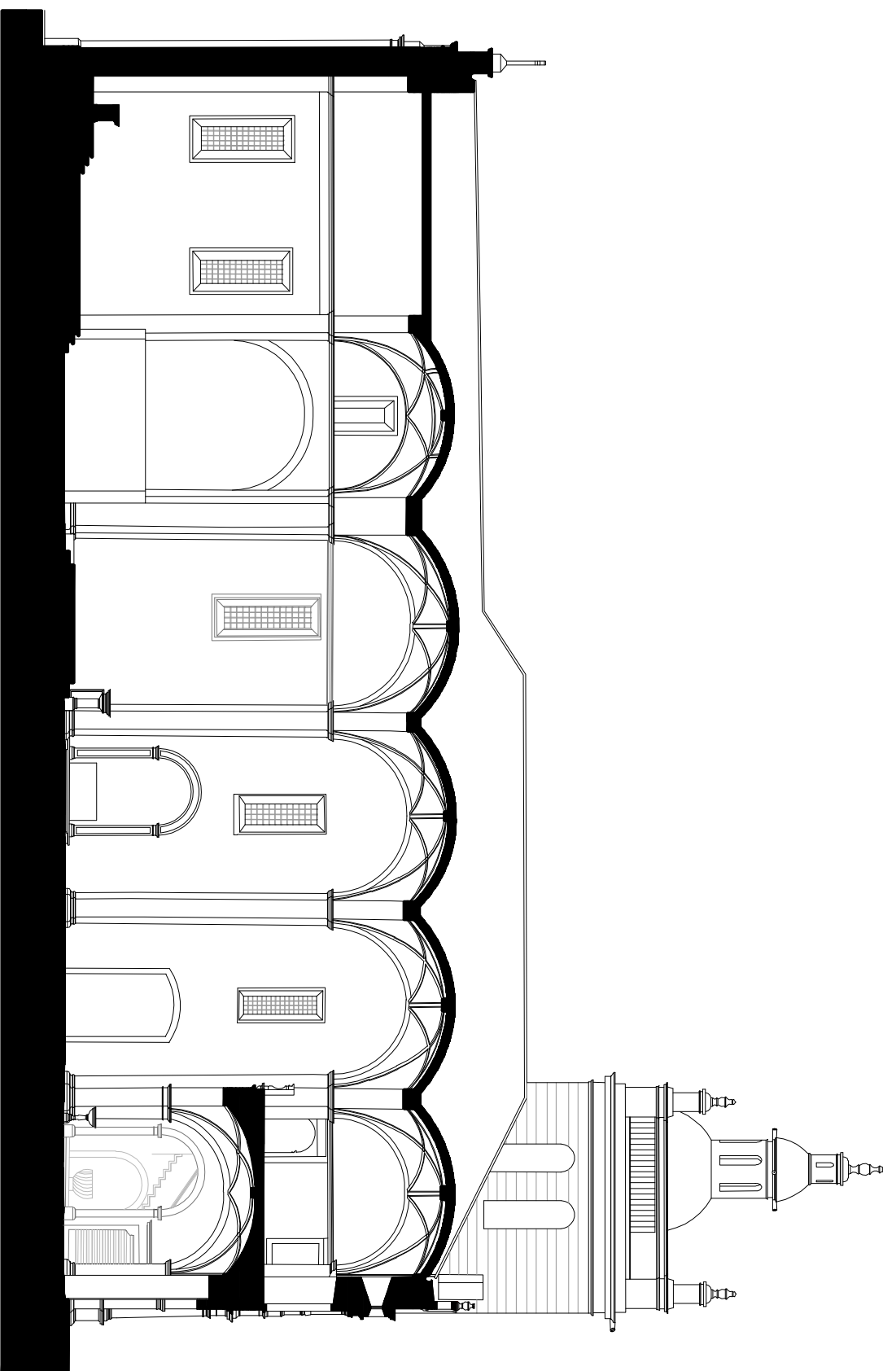
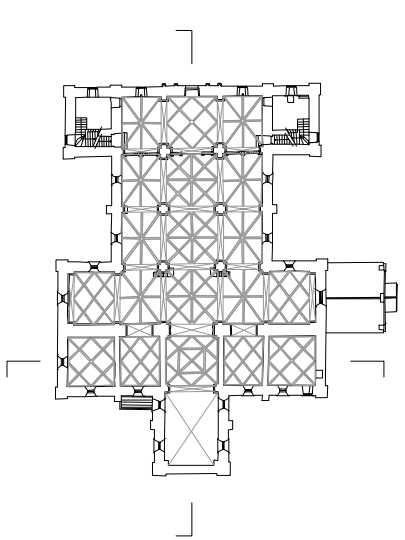
**As Sés Joaninas \_ Arquitectura episcopal portuguesa na segunda metade do século XVI**

**Sé de Miranda do Douro \_ Fachada sudeste**

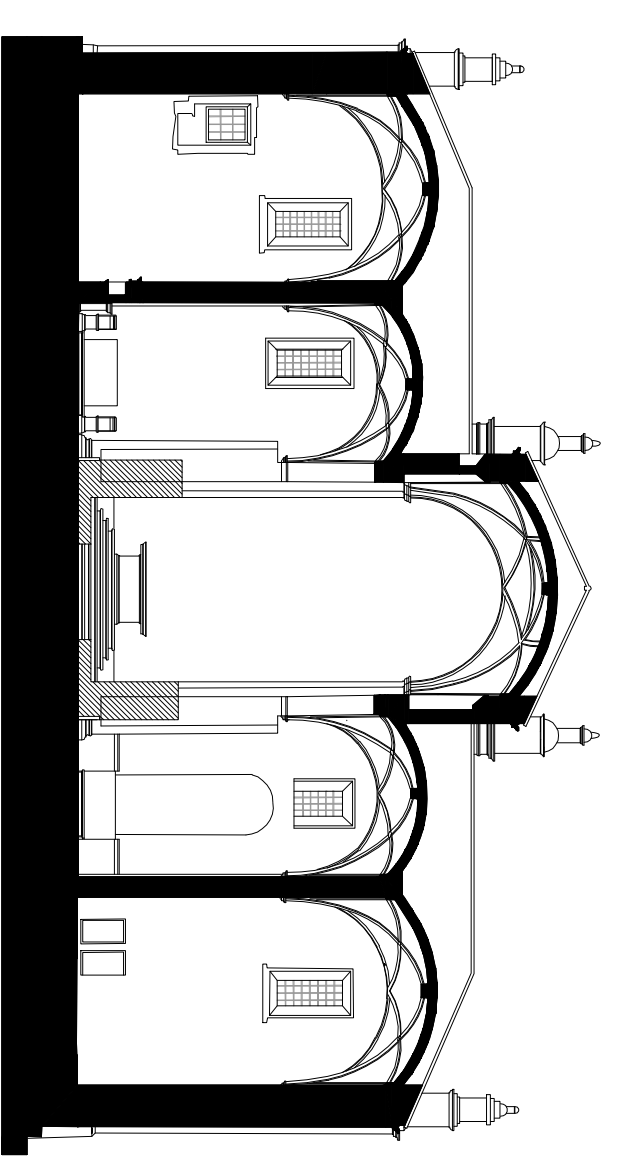
**Escala 1:250**

**Folha 4/8**

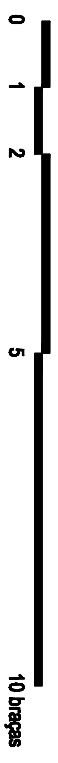


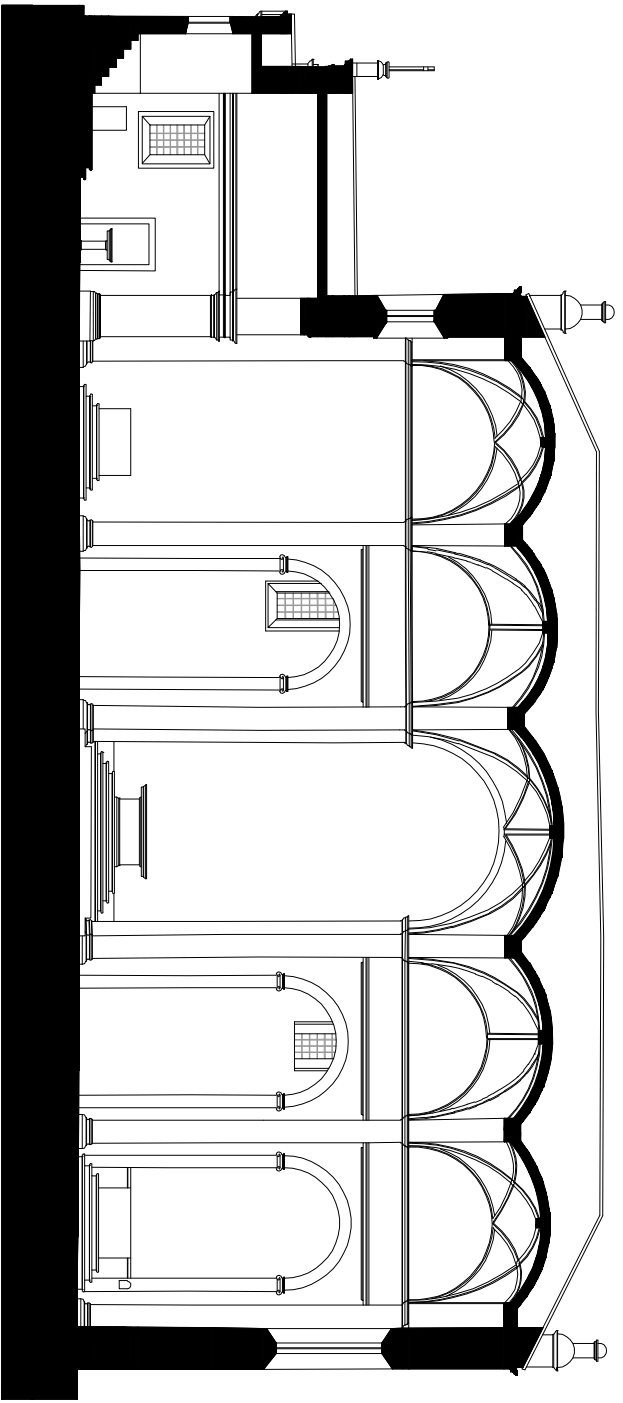
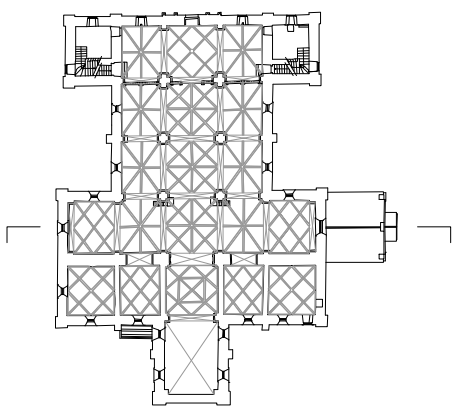


Corte longitudinal pela nave central



Corte transversal pela cabeceira





10 metros

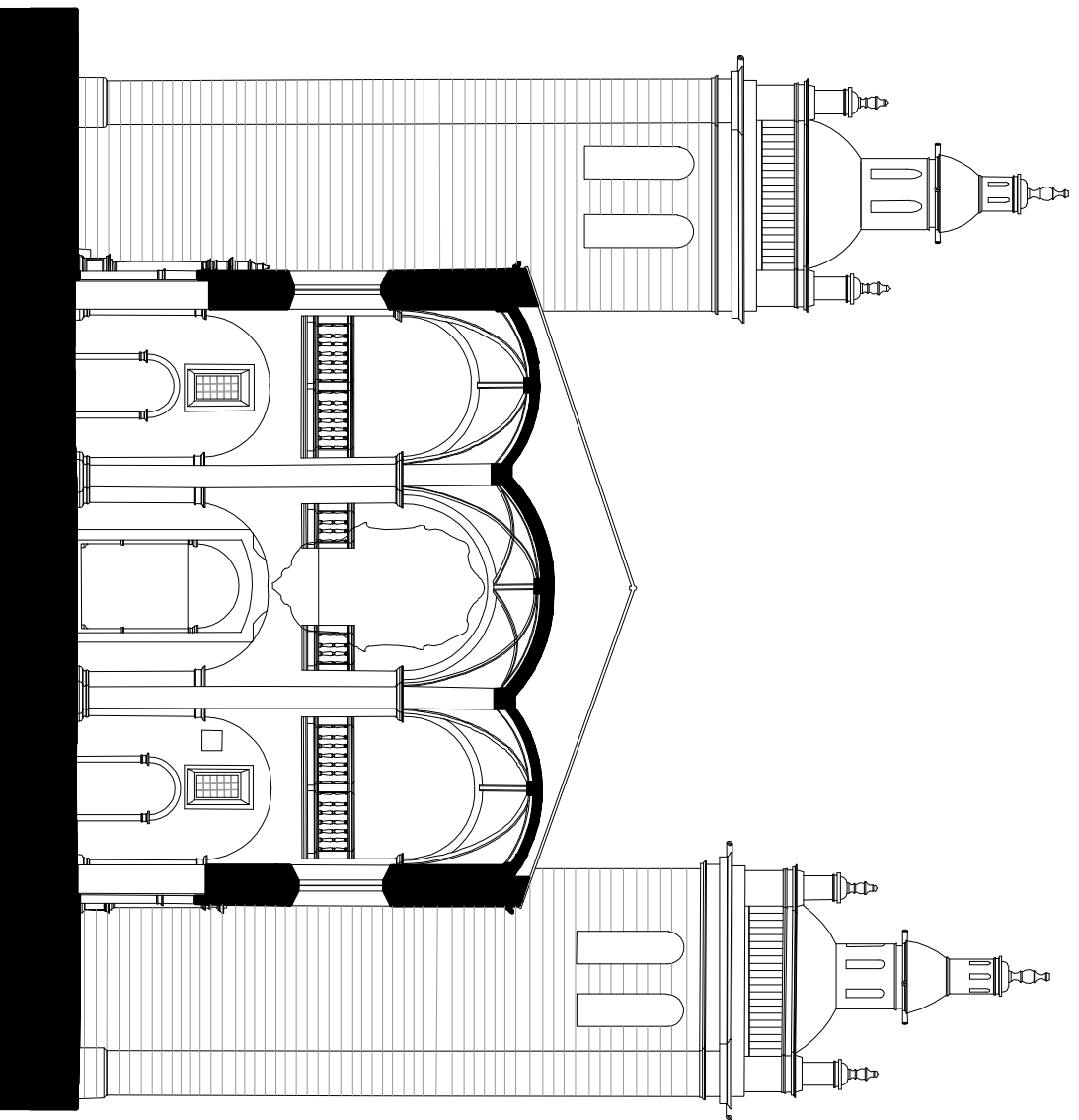
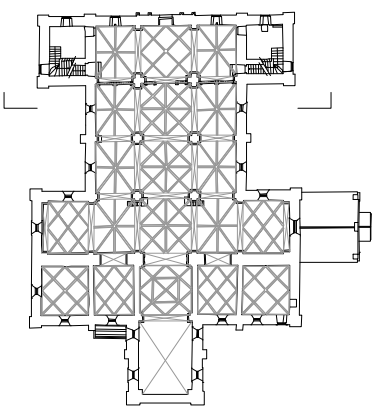
**As Sés Joanninas \_ Arquitectura episcopal portuguesa na segunda metade do século XVI**

**Sé de Miranda do Douro \_ Corte transversal pelo transepto**

Escala 1:250

Folha 7/8





**As Sés Joaninas \_ Arquitectura episcopal portuguesa na segunda metade do século XVI**

**Sé de Miranda do Douro \_ Corte transversal pelo corpo das naves**

Escala 1:250

Folha 8/8