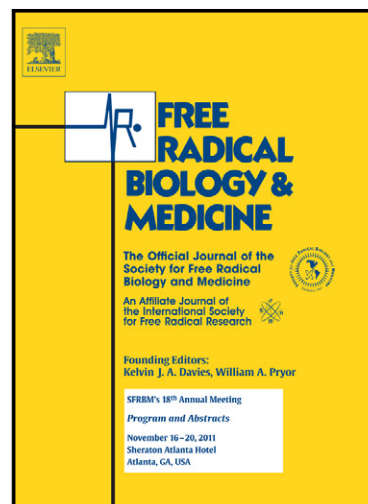


# Author's Accepted Manuscript

Revisiting oxidative stress and mitochondrial dysfunction in the pathogenesis of Parkinson's disease – resemblance to the effect of amphetamine drugs of abuse

Rita Perfeito, Teresa Cunha-Oliveira, Ana Cristina Rego



[www.elsevier.com/locate/freerad-biomed](http://www.elsevier.com/locate/freerad-biomed)

PII: S0891-5849(13)00270-0  
DOI: <http://dx.doi.org/10.1016/j.freeradbiomed.2013.05.042>  
Reference: FRB11588

To appear in: *Free Radical Biology and Medicine*

Cite this article as: Rita Perfeito, Teresa Cunha-Oliveira, Ana Cristina Rego, Revisiting oxidative stress and mitochondrial dysfunction in the pathogenesis of Parkinson's disease – resemblance to the effect of amphetamine drugs of abuse, *Free Radical Biology and Medicine*, <http://dx.doi.org/10.1016/j.freeradbiomed.2013.05.042>

This is a PDF file of an unedited manuscript that has been accepted for publication. As a service to our customers we are providing this early version of the manuscript. The manuscript will undergo copyediting, typesetting, and review of the resulting galley proof before it is published in its final citable form. Please note that during the production process errors may be discovered which could affect the content, and all legal disclaimers that apply to the journal pertain.

**Title:** "Revisiting oxidative stress and mitochondrial dysfunction in the pathogenesis of Parkinson's disease - resemblance to the effect of amphetamine drugs of abuse"

**Authors:** Rita Perfeito<sup>1,\*</sup>; Teresa Cunha-Oliveira<sup>1,\*</sup>; Ana Cristina Rego<sup>1,2</sup>

\* The authors contributed equally to this work.

**Affiliations:** <sup>1</sup>CNC-Center for Neuroscience and Cell Biology, University of Coimbra, Coimbra, Portugal; <sup>2</sup>Faculty of Medicine, University of Coimbra, Coimbra, Portugal

**Corresponding author:**

Prof. Ana Cristina Rego

CNC-Center for Neuroscience and Cell Biology, and Faculty of Medicine, University of Coimbra, polo I, Rua Larga, 3004-504 Coimbra, Portugal.

Tel.: +351 239 820 190; fax: +351 239 822 776

*E-mail:* [acrego@cnc.uc.pt](mailto:acrego@cnc.uc.pt); [a.cristina.rego@gmail.com](mailto:a.cristina.rego@gmail.com), [arego@fmed.uc.pt](mailto:arego@fmed.uc.pt)

**Abbreviated running title:** Oxidative stress in Parkinson's disease

**Keywords:** Parkinson disease; amphetamines; oxidative stress; mitochondrial dysfunction, dopamine.

**Acknowledgments:** This work was supported by project PTDC/SAU-NEU/101928/2008 funded by Fundação para a Ciência e a Tecnologia (FCT), Portugal, and cofinanced by: "COMPETE-Programa Operacional Factores de Competitividade", QREN and European Union (FEDER-Fundo Europeu de Desenvolvimento Regional). R.P. was supported by the FCT PhD fellowship SFRH/BD/25515/2005 and T.C.-O. by the FCT postdoctoral fellowship SFRH/BPD/34711/2007, cofinanced by POPH- Programa Operacional Potencial Humano, QREN and European Union.

## Index

Abbreviations .....	3
Abstract .....	4
Introduction to Parkinson’s disease .....	5
Clinical and Pathological Aspects .....	5
Sporadic and Familial forms of PD .....	6
Pathology spreading and neuronal circuits affected .....	8
Oxidative stress in sporadic PD .....	10
Sources of oxidative damage in PD .....	11
Dopamine and oxidative stress .....	12
Excitotoxicity leading to mitochondrial dysfunction and oxidative stress .....	14
Oxidative stress in familial PD .....	15
Autosomal Dominant Forms of PD .....	15
Alpha-synuclein (SNCA) .....	15
Leucine-rich repeat kinase 2 (LRRK2) .....	18
Autosomal Recessive Forms of PD .....	19
Parkin .....	19
PTEN-induced putative kinase 1 (PINK1) .....	20
PINK1 and Parkin .....	21
DJ-1 .....	22
Psychostimulant drugs of abuse and PD .....	24
Amphetamines, dopamine and PD .....	24
General Conclusions .....	26
References .....	28
Figure Legends .....	48

## Abbreviations

Alpha-syn – alpha-synuclein	NAC- nucleus accumbens
AD - Alzheimer’s disease	NAC – non-amyloid beta-component
ANK - ankyrin	NDUFA4 – NADH dehydrogenase (ubiquinone) 1 $\alpha$ -subcomplex 4
ARM - armadillo	ND1 – mitochondrial encoded NADH dehydrogenase 1
ASK1 – apoptosis signaling-regulating kinase 1	NMDA- <i>N</i> -methyl-D-aspartate
ATP13A2 – ATPase type 13A2	NO- nitric oxide
CMA – chaperone mediated autophagy	Nrf2 – nuclear factor erythroid 2-related factor 2
COR – C-terminal of Roc	3-NT- 3-nitrotyrosine
DAT- dopamine transporter	6-OHDA- 6-hydroxydopamine
DOPAC- 3,4-dihydroxyphenylacetic acid	8OHG- 8-hydroxyguanosine
ETC- electron transport chain	ONOO <sup>-</sup> - peroxynitrite
FBXO7 – F-box protein 7	PD- Parkinson’s Disease
GIGYF2 – Grb10-interacting GYF protein 2	PLA2G6 – phospholipase A2 group VI
GPx – glutathione peroxidase	PINK1 – PTEN-induced putative kinase 1
GSH- glutathione	RCR – respiratory control ratio
H <sub>2</sub> O <sub>2</sub> - hydrogen peroxide	RNS – reactive nitrosative species
HNE- 4-hydroxynonenal	Roc – Ras of complex protein
IBR – in-between-ring	ROS- reactive oxygen species
iPS – induced pluripotent stem	SERT- serotonin transporter
LAMP-2A – lysosome-associated membrane protein 2A	siRNA – short-interfering RNA
LBs – Lewy bodies	SN- substantia nigra pars compacta
L-DOPA- Levo-3,4-dihydroxyphenylalanine	SNCA – alpha-synuclein
LNs – Lewy neurites	SOD- superoxide dismutase
LRR – leucine-rich repeat domain	TH – tyrosine hydroxylase
LRRK2 – leucine-rich repeat kinase 2	TKL – kinase domain of the tyrosine-like
3-MA – 3-methyladenine	Trx1 – thioredoxin 1
MAO – monoamine oxidase	Ub – ubiquitin
MAPKKK – protein kinase kinase kinase	UBL – ubiquitin-like
MBP – myelin basic protein	UCHL1 – ubiquitin C-terminal hydrolase 1
MDA- malondialdehyde	UCP-2-uncoupler protein 2
MDMA- methylenedioxymethamphetamine	UPS- ubiquitin proteasome system
MPTP- 1-methyl-4-phenyl-1,2,3,6-tetrapyridine	VMAT2- vesicular monoamine transporter 2
MPP <sup>+</sup> - 1-methyl-4-phenylpyridinium	VTA- ventral tegmental area
mtDNA- mitochondrial DNA	WT – wild-type
mtHSP70- mitochondrial heat shock protein 70	

**Abstract**

Parkinson's disease (PD) is a chronic and progressive neurological disease associated to a loss of dopaminergic neurons. In most cases the disease is sporadic but genetic inherited cases also exist. One of the major pathological features of PD is the presence of aggregates that localize in neuronal cytoplasm as Lewy bodies, mainly composed of alpha-synuclein (alpha-syn) and ubiquitin. The selective degeneration of dopaminergic neurons suggests that dopamine itself may contribute to the neurodegenerative process in PD. Furthermore, mitochondrial dysfunction and oxidative stress constitute key pathogenic events of this disorder. Thus, in this review we give an actual perspective to classical pathways involving these two mechanisms of neurodegeneration, including the role of dopamine in sporadic and familial PD, as well as in the case of abuse of amphetamine-type drugs. Mutations in genes related to familial PD causing autosomal dominant or recessive forms may also have crucial effects on mitochondrial morphology, function and oxidative stress. Environmental factors, such as MPTP and rotenone, have been described to induce selective degeneration of the nigrostriatal pathways leading to alpha-syn positive inclusions, possibly by inhibiting mitochondrial complex I of the respiratory chain and subsequently increasing oxidative stress. Recently, increased risk for PD was found in amphetamine users. Amphetamine drugs have similar effects to other environmental factors for PD, since long-term exposure to these drugs leads to dopamine depletion. Moreover, amphetamine neurotoxicity involves alpha-syn aggregation, mitochondrial dysfunction and oxidative stress. Therefore, dopamine and related oxidative stress, as well as mitochondrial dysfunction, appear to be common links between PD and amphetamine neurotoxicity.

## Introduction to Parkinson's disease

Parkinson's disease (PD) is a chronic and progressive neurological disease associated to a loss of dopaminergic neurons in the *substantia nigra pars compacta* (SN), as well as with more-widespread neuronal changes that cause complex and variable motor and nonmotor symptoms. PD is the second most prevalent neurodegenerative brain disorder, affecting 1 to 2% of the population above 65 years of age and its prevalence increases to approximately 4% in individuals above 85 years of age [1, 2]. The etiopathogenesis of PD is still not fully understood. In most cases the disease is sporadic: a multifactorial, idiopathic disorder that seems to arise from a combination of environmental exposures and genetic susceptibility. The remaining cases are the result of genetic inheritance. Moreover, 15 to 20% of the patients with PD report a family history of the disease, although monogenic forms of PD are relatively rare [2-4]. Nevertheless, old age continues to be the main risk factor in the development of the disease [5, 6], making clear that during aging, our cells display a greater degree of dysfunction, leading to cell stress (including decreased capacity to cope with oxidative stress) and greater energy demand. Investigations into post-mortem PD brains, particularly, in the SN, have consistently demonstrated abnormalities in mitochondrial function and increased levels of oxidative stress [7-14]. Furthermore, there is evidence of inflammation through microglia activation in the SN, even at the time of death. The finding that alpha-syn is the major component of LBs directed studies on protein metabolism and defects in protein degradation through the ubiquitin (Ub) proteasome system (UPS) and autophagy pathways as contributory factors to PD pathogenesis. These cellular pathways are interconnected, since mitochondrial dysfunction, namely complex I inhibition, leads to increased free radical generation, which further evokes deficits of the respiratory chain. Importantly, the UPS is dependent on oxidative phosphorylation for energy production and oxidatively damaged proteins increase the bulk of substrates to be degraded by the UPS. Moreover, this leads to increased cell dysfunction and a lowered threshold to apoptosis [15], a type of programmed cell death characterized by membrane blebbing, shrinking of organelles, and chromatin condensation and fragmentation [16].

## Clinical and Pathological Aspects

Clinically, PD has often been characterized by the presence of cardinal motor signs, namely resting tremor, rigidity, bradykinesia and postural instability. One of the main features affecting these patients includes a slowness of initiation of voluntary movement with a progressive reduction in speed and amplitude of sequential motor tasks [17, 18]. For a long

time, PD was thought to involve a relatively simple neuropathological process primarily centered on the loss of dopaminergic neurons in the SN. This results in the loss of dopaminergic transmission in the striatum, leading to the majority of the classic motor symptoms of PD. The disease becomes evident when approximately 80% of striatal dopamine and 50% of nigral neurons are lost [2, 19, 20]. However, recent evidence indicates that non-motor characteristics such as autonomic insufficiency, cognitive impairment, olfactory deficits, sleep disturbance, depression and psychosis are very common during the course of the disease. The clinical diagnosis of PD is typically based on the presence of cardinal motor features, absence of atypical findings suggestive of an alternate diagnosis and response to Levo-3,4-dihydroxyphenylalanine (L-DOPA)[2, 21].

In addition to loss of dopaminergic neurons in the SN, PD is neuropathologically characterized by the presence of Lewy bodies (LBs) and Lewy neurites (LNs) in vulnerable populations of neurons. These are intracytoplasmic insoluble protein inclusions located in either the neuronal cell body or neuronal processes, respectively. The principal component of LBs and LNs is alpha-synuclein (alpha-syn), a small protein of 140 amino acids that is predominantly expressed in the neocortex, hippocampus, SN, thalamus and cerebellum [22]. The pathological definition of PD depends upon the presence of LBs in the SN neurons, although it is clear that pathology is also present outside this area [23, 24].

### **Sporadic and Familial forms of PD**

Sporadic and inherited forms of PD share pathological, biochemical and clinical features, with dysfunction of mitochondria, increased oxidative stress levels and associated molecular pathways representing a link between the two forms of PD, as well as the natural ageing process [6]. Environmental factors were long thought to be the principal cause of PD, particularly after the influenza pandemic of 1918, when a significant number of individuals developed postencephalitic parkinsonism. Infectious agents in the environment were then suspected to be the causal factors [25, 26]. This environmental theory was subsequently supported by the identification of *N*-methyl-4-phenyl-1,2,3,6-tetrahydropyridine (MPTP) in the early 1980's, whose metabolite 1-methyl-4-phenylpyridinium (MPP<sup>+</sup>) is responsible for the selective degeneration of the nigrostriatal pathways, by inhibiting mitochondrial complex I of the respiratory chain and subsequently increasing oxidative stress levels in dopaminergic neurons. Moreover, MPP<sup>+</sup> was shown to bind vesicular monoamine transporters (VMAT) and redistribute vesicular dopamine to the cytosol[27]. Within the cytosol, MPP<sup>+</sup> may also interact with different cytosolic enzymes, namely xanthine oxidase, aldehyde dehydrogenase and lipoamide dehydrogenase[28]. MPTP leads to a parkinsonian syndrome in rodents (namely

mice, whereas rats are generally resistant to systemic MPTP), primates and humans [29, 30]. A similar pathogenic mechanism was suggested for rotenone, a common naturally occurring botanical pesticide, which also acts as an inhibitor of the mitochondrial respiratory chain complex I and leads to a failure of the mitochondrial energy supply of the cell. Betarbet and co-workers (2000) showed that chronic treatment with rotenone was sufficient to cause typical features of PD, including loss of dopaminergic neurons and appearance of alpha-syn positive inclusions in rodents [31, 32]. The involvement of oxidative damage caused by mitochondrial dysfunction after rotenone treatment was also demonstrated in *in vitro* models, suggesting specific neuronal death by rotenone [33]. In this regard, a large number of environmental situations and agents have been identified, including farming and rural life, industrial chemicals, metals, pesticide exposure, however, no conclusive relations between individual studies have been found [26, 34, 35]. Factors decreasing the risk of developing PD can also provide valuable clues to understand its etiology. Evidence that cigarette smoking, caffeine and tea intake may reduce the risk for PD development appears clear, but there is still uncertainty over their exact role in the disease [36, 37].

Over the last two decades, the scientific view of PD etiology has dramatically changed. Although most patients with idiopathic or late-onset PD (90% of all cases) do not seem to have inherited the disease, a positive family history is frequently associated with a high risk of developing PD. Studies in families with rare Mendelian inheritance (5-10%), where several causative genes have been identified, show protein aggregation, abnormal handling of misfolded proteins by the UPS, together with oxidative stress, mitochondrial dysfunction, alterations in autophagy-lysosomal pathways and kinase signaling pathways, suggesting that all play a major role in the pathogenesis of PD [26].

Molecular genetic analysis of PD families in the last years, in particular the mapping and the subsequent cloning of genes that cause inheritable forms of this disorder, has provided important insights in the mechanisms underlying PD pathology. Particularly, it has been shown that PD is not a single clinical entity, but rather a heterogeneous group of diseases with different associated pathologies and a variable spectrum of clinical symptoms and signs. Furthermore, some familial forms include atypical clinical features, such as young-onset, onset with dystonia or the early occurrence of dementia and dysautonomia. Alternatively, PD may result from a combination between genetic predisposition and environmental factors, or, moreover, from common genetic variants in genes identified in monogenic forms that have been found to confer a risk of developing the sporadic disease.

Understanding the mechanisms underlying the initiation and progression of PD, came with the identification of mutations in the gene encoding alpha-syn (SNCA, PARK 1 locus) in an Italian



family (the Contursi kindred) and the evidence that alpha-syn is the major component of LBs [26, 38-40]. Since then, a total of 18 loci have been indicated through linkage analysis (PARK1-15) or genomewide association studies (GWASs) (PARK16-18) [41-53]. Mutations within 11 genes of these loci have conclusively been demonstrated to cause familial parkinsonism in either autosomal dominant or recessive forms [2, 54], including PARK1 and PARK4 [SNCA (alpha-syn)], PARK2 (parkin), PARK5 [ubiquitin C-terminal hydrolase L1 (UCHL1)], PARK6 [PTEN-induced putative kinase 1 (PINK1)], PARK7 (DJ-1), PARK8 [Leucine-rich repeat kinase 2 (LRRK2)], PARK9 [ATPase type 13A2 (ATP13A2)], PARK11 [Grb10-interacting GYF protein 2 (GIGYF2)], PARK13 [Omi/Htra2 (HTRA2)], PARK14 [phospholipase A2 group VI (PLA2G6)], and PARK15 [F-box protein 7 (FBXO7)] [26]. Furthermore, common polymorphisms within two of these genes (SNCA and LRRK2) are now well-associated to risk factors for common sporadic PD [2, 55], which suggests that the contribution of genetics to PD may be more relevant than previously thought.

### **Pathology spreading and neuronal circuits affected**

Research in the last 25 years has confirmed that although the lesion in the SN is a key hallmark to the pathological confirmation of PD, the pathological lesions are much more extensive and involve a number of pathways in the brainstem and areas of the neocortex [18, 56, 57]. It is presently recognized that early neuronal loss occurs in other regions involved in motor control [58, 59] and in neurons of the mesocortical system [60]. The involvement of other neuronal populations takes place later in PD or only in certain clinical phenotypes and includes neuronal loss in the cholinergic basal forebrain [61], in the hypothalamic hypocretin system [62, 63] and in the upper brainstem serotonin system [64]. Neuronal loss is very restricted to areas containing LBs, such as the amygdala, the dorsal motor nucleus of the vagus nerve, locus coeruleus and the neocortex [65-68]. Although the pathology of PD affects a sort of neuronal systems, it does not cause substantial brain tissue loss [69, 70], since cell loss is restricted to only certain neuronal populations, including the SN [19].

Various types of studies suggest that PD is slow in progressing through the nervous system, with restricted pathology occurring before the characteristic symptoms. In fact, the onset of PD is so gradual, that it is frequently difficult to check out a patient when the disease first emerges, and by the time the diagnosis is made, pathology is likely to be widespread [18]. Many of the earliest symptoms are commonly misinterpreted, since some are linked to the normal aging process; these include depression, rheumatism, loss of elasticity and other secondary symptoms, namely fatigue, autonomic dysfunction, constipation or sleep

disturbances, leading to insufficient information to make a definitive diagnosis. Indeed, the major symptoms associated to PD seem to appear after a significant neuronal cell loss.

The neuropathological distribution of the insoluble inclusions (LBs) constituted by misfolded alpha-syn throughout the brain, has gained importance over time. This is due to the work developed by Heiko Braak and colleagues, who proposed a theory for the progression of PD [71, 72], based on LB pathology progression through cell-to-cell contact. They examined brains from patients with confirmed diagnoses of neurodegenerative disorder and made several observations, paying special attention to the development of PD neuropathology. In brain sections derived from autopsied PD patients, they detected an apparent correlation between the amount of alpha-syn deposits and the stage of the disease [71]. Moreover, based on these initial observations, Braak's team performed anatomical neuropathological studies in order to characterize the cerebral progression of alpha-syn-positive LBs and LNs, as the disease process continued. This led to the establishment of an association between LB pathology and clinical symptoms [71-73] and to the development of the Braak's staging concept for PD, which includes six stages that represent pre-symptomatic (prior to the motor symptoms) and symptomatic phases [71].

In stage 1, Braak et al. (2004) have suggested that LB pathology appears outside the SN. These initial alpha-syn-immunoreactive inclusions are found within the olfactory system, causing autonomic and olfactory deficits. In stage 2, the LBs and LNs are more widespread within the medulla oblongata, including monoaminergic areas. During these first stages, the individuals do not present any perceptible motor symptoms [73]. Stage 3 is characterized by the progression of Lewy pathology into the brainstem. The alpha-syn-positive deposits are typically found in the midbrain and basal forebrain and later spread into the SN. In stage 4, cell loss into the SN is evident, as well as alpha-syn immunoreactivity in the cerebral cortex. At this time, patients may display the first symptoms consistent with parkinsonism. Finally, in end stages 5 and 6, few cells remain positive for neuromelanin in the SN, while alpha-syn-positive pathology begins to invade the neocortex. At these phases, the motor symptoms are clearly severe and cognitive dysfunction becomes evident [20, 72, 74-76]. In addition, Braak and colleagues (2003) proposed that projection neurons with no or limited myelination were particularly susceptible to the deposition of alpha-syn, suggesting that PD progression described above might evolve via these neuronal pathways, affecting more sensitive neurons before reaching the less vulnerable cells.

Recent studies demonstrating that misfolded aggregated alpha-syn can be transferred across synapses and spread within postsynaptic cells, gives strength to the concept of the cell-to-cell transfer [18, 77]. However, the most controversial aspect of the Braak PD's staging is

identifying where LB pathology begins in the brain, since other studies on similar populations suggest that 7-8% of patients did not present medullary LBs [78, 79]. Furthermore, the lack of correlation between Braak staging and clinical severity has also been seen as problematic as the clinical deficits associated to PD appear to be more related to the degree of dopaminergic cell loss than to the severity of Lewy pathology.

### **Oxidative stress in sporadic PD**

The etiology of sporadic PD is unknown although mitochondrial dysfunction, oxidative and nitrosative stresses have been implicated in the mechanisms associated with PD pathogenesis [80, 81].

Oxidative stress is characterized by a redox imbalance between generation of free radicals or other reactive species and antioxidant defenses, and it may be related to changes in mitochondrial function and protein clearance [82]. There is considerable evidence for involvement of mitochondrial dysfunction in sporadic PD, since multiple genes in which mutations or polymorphisms increase the risk of PD, are linked to mitochondrial function [83]. Moreover, mitochondrial toxins were described to induce a phenotype similar to PD [84].

Analysis of biochemical markers for oxidative damage in tissue samples from patients or in post-mortem brains provided direct evidence of oxidative stress in PD. Increased levels of lipid peroxidation were found in the SN, as suggested by decreased levels of polyunsaturated fatty acids (substrates for lipid peroxidation) and increased levels of malondialdehyde (MDA)[85] and 4-hydroxynonenal (HNE)[86]. Nucleic acid oxidation product 8-hydroxyguanosine (8OHG) is also elevated in the neurons affected in the disease, compared to surrounding brain regions in the PD brain, as well as in comparison to the SN of age-matched controls [87, 88]. Lipid and DNA oxidation were also found to be systemically elevated in PD [82]. Oxidative and nitrate posttranslational modifications have been identified on proteins that may affect the disease progression [81]. This includes increased levels of oxidized protein carbonyls in the SN of PD patients [89, 90] and nitration of tyrosine residues within LBs in the PD brain [91, 92]. Increased 3-nitrotyrosine(3-NT) levels have been also detected following systemic administration of the PD-inducing toxin MPTP in baboons [93] and mice [94]. Along with the increase in oxidative damage, decreased levels of the antioxidant glutathione (GSH) were found in the SN of PD patients [95-97].

### Sources of oxidative damage in PD

The preferential loss of nigral neurons in PD, compared to other nearby catecholaminergic neurons, has been associated with the presence of neuromelanin, since neurons that contain this pigment are the most affected in the disease[98, 99]. Neuromelanin appears to result from the autoxidation of dopamine, in a process that generates reactive oxygen species (ROS)[100]. The presence of high amounts of iron in PD SN[101], which contribute to the production of free radicals via the Fenton-Haber Weiss reaction, has also been pointed out as a cause for selective degeneration of these neurons. In this reaction, hydrogen peroxide ( $H_2O_2$ ) generated during normal metabolism, during electron transport in mitochondria, or by pathogenic mechanisms, can be subsequently converted to the extremely toxic hydroxyl radical ( $\cdot OH$ ), which may elicit cellular damage, lipid peroxidation and eventually apoptosis [102].

Under normal physiological conditions, excess iron can be sequestered in ferritin and neuromelanin, and in this respect neuromelanin has been described to be neuroprotective[103]. Thus, elevated levels of iron observed in the SN of PD patients may reflect a dysfunction of brain iron homeostasis. Alternatively, the excess in iron content may be due to brain iron deposition associated with aging [104].

Oxidative stress in PD has been also suggested to be a consequence of complex I dysfunction [83]. Complex I impairment seems to be important for the pathogenesis of PD since exposure to inhibitors of this complex, such as MPP<sup>+</sup> or rotenone, reproduces the clinical symptoms of PD observed in human subjects [105, 106]. Complex I is the largest of the electron transport chain (ETC) complexes, consisting of 46 subunits, 7 of which are encoded by mitochondrial DNA (mtDNA) [107] and the major site of superoxide production in the ETC [108]. Complex I activity and expression are decreased in the SN[109-112] and cortex [113] of PD patients to a greater extent than would be expected from normal aging [107]. Oxidized, functionally impaired and misassembled complex I subunits, have been reported in PD [114]. Moreover, complex I dysfunction was reported in skeletal muscle and platelets of PD patients [112].

SN is also particularly vulnerable to toxic effects caused by nitric oxide ( $\cdot NO$ ), leading to neurodegeneration of dopaminergic and catecholaminergic cells, probably due to the presence of high concentrations of 6-hydroxydopamine (6-OHDA) in this structure, which readily reacts with  $\cdot NO$  generating dopamine semiquinones (described below in this article) and increasing intramitochondrial and cytosolic peroxynitrite ( $ONOO^-$ ) formation [83]. Indeed,  $\cdot NO$  is known to readily react with superoxide anions ( $O_2^{\cdot -}$ ) to form the highly toxic  $ONOO^-$ , which induces cellular damage through protein nitration, lipid peroxidation and DNA fragmentation [115]. Apart from the recognized  $\cdot NO$  control of complex IV activity and cell respiration, both  $\cdot NO$  and  $ONOO^-$  have been reported as direct inhibitors of complex I, probably due to S-nitrosylation

and Fe-nitrosation of complex I subunits [116]. Tyrosine nitration, protein oxidation and damage to iron sulfur centers with sustained complex I inhibition are associated with increased generation of  $O_2^{\cdot-}$  by complex I [83].

### ***Dopamine and oxidative stress***

Even though neuronal alterations observed in PD are not restricted to dopaminergic neurons, the dopaminergic neurons of the nigrostriatal pathway are the major site of neuronal degeneration in PD [99]. Selective degeneration of the dopamine neurons of the SN suggests the possibility that dopamine itself may be contributing to the neurodegenerative process [117]. Moreover, the loss of dopaminergic neurons in the SN, leading to the degeneration of the nigrostriatal pathway and resulting in the marked reduction in striatal dopamine, appears to be crucial for the development of the clinical features of the disease, as demonstrated by the remarkable response of most of the motor symptoms to the dopamine precursor L-DOPA (dopamine replacement therapy). Thus, dopamine may play a role in the selective degeneration of this brain area in PD. Under normal conditions, dopamine is synthesized from tyrosine by tyrosine hydroxylase (TH), the rate-limiting enzyme in dopamine biosynthesis, and aromatic amino acid decarboxylase. Once formed, dopamine is safely stored in high millimolar concentrations in synaptic vesicles following uptake by VMAT2 [118]. Impairment of vesicular storage of dopamine, which may be due to the presence of alpha-syn protofibrils, oxidative stress or weak base compounds such as methamphetamine (further described below) [119], leads to increased dopamine levels in the cytoplasm. Concordantly, alpha-syn overexpression was shown to increase cytosolic catecholamine concentration [120]. MPP<sup>+</sup> interaction with VMAT and redistribution of vesicular dopamine to the cytosol also causes intracellular dopamine oxidation [27]. Under conditions of oxidative stress, dopamine has the potential to form reactive metabolites by enzymatic and non-enzymatic mechanisms, that may further contribute to mitochondrial dysfunction and oxidative damage, accelerating dopaminergic cell death in PD. Dopamine may be metabolized intracellularly by monoamine oxidase (MAO), a mitochondrial enzyme present in the cytoplasmic side of the outer mitochondrial membrane and aldehyde dehydrogenase, producing 3,4-dihydroxyphenylacetic acid (DOPAC) and  $H_2O_2$ . MAO exists in two isoforms, MAO-A and MAO-B, which have different substrate specificity. Both isoforms oxidize dopamine, but in humans dopamine is preferentially oxidized by MAO-B, whereas in rodents it is predominantly oxidized by MAO-A [121].

In addition, autoxidation of the catechol ring of dopamine produces  $O_2^{\cdot-}$  and  $H_2O_2$ , which may react with transition metal ions, such as iron, via the Haber-Weiss/Fenton reactions,

originating the highly toxic hydroxyl radical  $\cdot\text{OH}$ . This  $\text{O}_2^{\cdot-}$  may also easily react with  $\cdot\text{NO}$ , forming the highly toxic  $\text{ONOO}^-$ .

The autoxidation of dopamine also originates the electron-deficient dopamine quinones or semiquinones, which is facilitated by the presence of transition metal ions [117]. Dopamine quinones readily react with cellular nucleophiles, such as the reduced sulfhydryl group on protein cysteinyl residues, and covalently modify protein structure [117]. These cysteinyl residues are often at the active site of proteins and, thus, covalent modification by dopamine quinones often results in inactivation of protein function, which may result in compromised cell survival. This mechanism may play a role in the degenerative process in PD [122]. Dopamine was found to modify proteins associated with the genetic forms of PD, such as alpha-syn [123], parkin [124], LRRK2 or UCH-L1 [125]. Other proteins that are modified by dopamine oxidation include TH [126], superoxide dismutase 2 (SOD2), mitochondrial creatine kinase, mitofilin and mitochondrial heat-shock protein 70 (mtHSP70) [125]. Alpha-syn was shown to interact with dopamine-quinones stabilizing alpha-syn protofibrils [127] and promoting alpha-syn aggregation; interestingly, this process may also prevent dopamine-quinones from producing greater oxidative damage to dopaminergic neurons [128]. Excess alpha-syn also seems to potentiate the production of ROS by endogenous dopamine and cell death, involving the formation of soluble alpha-syn-14-3-3 protein complexes [129]. Moreover, direct binding and functional coupling of alpha-syn to the dopamine transporter (DAT, responsible for the re-uptake of this neurotransmitter from the synaptic cleft) was reported to accelerate dopamine uptake, increasing dopamine levels in the cytosol and dopamine-induced apoptosis [130].

ROS are physiological activators of adenosine triphosphate-sensitive  $\text{K}^+$  (KATP) channels, causing  $\text{K}^+$  efflux and membrane hyperpolarization, which play a role in the physiological function of dopaminergic neurons, controlling dopamine release in the striatum. Dopaminergic neurons in the ventral tegmental area (VTA) may be less sensitive to KATP channel activation than SN neurons, due to increased levels of uncoupler protein 2 (UCP-2), which provides partial constitutive impairment of their respiratory chain, and an intrinsic capacity to buffer mitochondrial ROS [131].

Oxidative damage is also known to impair ubiquitination and degradation of proteins by the proteasome [132]. Dopamine oxidation contributes to additional factors implicated in PD, such as protein aggregation, endoplasmic reticulum stress and lysosomal dysfunction [117]. Thus, the combination of mitochondrial dysfunction, oxidative stress, and dopamine oxidation likely increases the vulnerability of dopaminergic neurons to degeneration in PD [133].

***Excitotoxicity leading to mitochondrial dysfunction and oxidative stress***

There are several lines of evidence suggesting a toxic effect of glutamate in neurodegeneration of dopaminergic neurons in the SN[107], as evidenced by the protection conferred by NMDA receptor antagonists, such as memantine [134] and MK-801[135-138] against MPP<sup>+</sup> neurotoxicity. Amantadine, another NMDA receptor antagonist, is currently used to treat PD in humans[139, for review]. Glutamate toxicity, or excitotoxicity, has been pointed out as an alternative source of oxidative stress in PD [107, 140]. The firing patterns of cortical glutamatergic projections to the basal ganglia seem to be altered in PD. The glutamatergic projections to the subthalamic nucleus become overactive in PD and pharmacologic blockade of subthalamic neurotransmission (to the SN) has anti-parkinsonian symptomatic effects and may also help to protect the remaining dopamine neurons of the SN from excitotoxic degeneration [140].

Excitotoxicity is caused by a massive influx of extracellular calcium resulting from the overactivation of the *N*-methyl-D-aspartate (NMDA) receptor. Cytoplasmic calcium activates several calcium-dependent enzymes involved in the degradation of proteins, phospholipids, and nucleic acids, many of which can elicit the generation of endogenous ROS or reactive nitrosative species (RNS)[16, for review]. Activation of these pathways may lead to necrotic cell death involving mitochondrial dysfunction, membrane breakdown, cytoskeletal alterations, and <sup>•</sup>NO-derived free radicals, or apoptosis.

Impairment of energy metabolism in PD, resulting from mitochondrial dysfunction, may affect the maintenance of the resting potential, thus increasing glutamate release, which exacerbates NMDA receptor activation. This may in turn induce a rise in cytosolic calcium and mitochondrial uptake of calcium, generating free radicals. Thus, mitochondrial dysfunction associated with the loss of calcium homeostasis and enhanced cellular oxidative stress has long been recognized to play a major role in cell damage associated with excitotoxicity [16]. Under normal conditions, calcium taken up by mitochondria can physiologically increase ATP generation by activating matrix dehydrogenases [141]. However, an increase in mitochondrial calcium can promote ROS and <sup>•</sup>NO generation, and promote the loss of cytochrome c due to the mitochondrial permeability transition, which can result in increased mitochondrial ROS release [142]. Mitochondrial buffering of calcium may be impaired in PD, as suggested by reduced carbonyl cyanide *m*-chlorophenylhydrazone-releasable calcium in PD cybrids[143]. Mitochondrial dysfunction can further induce alpha-syn oligomerization in PD cybrids via ATP depletion-driven microtubule depolymerization and ROS-driven protein oxidation [144].

## Oxidative stress in familial PD

As described before in this review, heritable cases of PD constitute early onset forms of the disorder [145-147]. Previous studies have shown evidence that the products of PD-associated genes have crucial effects on mitochondrial morphology, function and oxidative stress [148].

## Autosomal Dominant Forms of PD

Dominant mutations often act through a gain-of-function mechanism. To date, at least two genes, SNCA and LRRK2, have been shown to cause autosomal dominant PD, with a mutation frequency of 5% [26].

### *Alpha-synuclein (SNCA)*

SNCA (also known as PARK1) was the first gene identified in a large Italian family (Contursi kindred) segregating a pathogenic missense mutation – A53T – causing dominantly inherited PD and LB pathology [38, 39]. Since then, two groups of disease-causing mutations have been described in the alpha-syn gene: 1) three missense point mutations (A53T, A30P and E46K) [39, 54, 149, 150] (**Figure 1**) and 2) whole-locus multiplications, including duplications and triplications, leading to a pathogenic overexpression of the wild-type (WT) protein.

Human alpha-syn was first identified as the precursor protein for the non-amyloid beta-component (NAC) of Alzheimer's disease (AD) amyloid plaques [151]. Structurally, this small protein of 140 amino acids, is characterized by: 1) a highly amyloidogenic domain (NAC), that itself presents high propensity to aggregation and to form oligomeric structures and insoluble fibers [152]; 2) seven imperfect repeats (KTKEGV) at the N-terminal, which form an amphipathic  $\alpha$ -helical domain when the protein interacts with lipid-containing membrane microdomains [153] and 3) an acidic C-terminal region [154] (**Figure 1**).

Predominantly localized to presynaptic nerve terminals, alpha-syn can also be found in other neuronal compartments like the cytosol, mitochondria and nucleus. Although its physiological function is still unknown, it has been proposed to have a role in the integration of presynaptic signaling and neuronal plasticity [155]. Prior findings are consistent with these roles, with alpha-syn appearing to control synaptic vesicle fusion and recycling. Most data indicate that alpha-syn inhibits synaptic transmission in an activity-dependent manner, as observed in alpha-syn deficient mice, exhibiting accelerated recovery of dopamine release when presented to multiple stimuli [156]. In addition, alpha-syn is also predicted to have specific effects in dopaminergic neurons, where it may negatively regulate the activity of TH, as well as the activity of DAT [157]. Products resulting from the interaction between dopamine and alpha-syn have been widely explored to address whether this interaction may produce toxic forms of



alpha-syn [158]. Dopamine is prone to oxidation and its quinone derivatives react with proteins, in general via a covalent modification of a cysteine (as described above). Alpha-syn, however, does not possess a cysteine residue in its structure. Data from Norris et al. (2005) [159] suggest an ionic interaction between dopamine-quinone and residues 125-129 of alpha-syn. Dopamine modification of alpha-syn seems to maintain small alpha-syn oligomers in a reactive protofibril conformation by inhibiting progression to form less reactive aggregates and this effect was more evident for alpha-syn mutant forms [160, 161].

Fibrillization and aggregation of mutant alpha-syn play a central role in neurodegenerative mechanisms, either due to primary alterations in the peptide sequence or due to increased levels of physiological protein, possibly exceeding existing pathways of degradation. An increase in proteins that are determined to be degraded by the UPS or an impairment of the UPS function are contributive factors to proteolytic stress due to accumulation and aggregation of proteins in cytosol. How alpha-syn is degraded is still a matter of debate, but it is likely that both UPS and the lysosomal degradation pathway intervene in regulating the steady-state levels of the protein under normal physiological conditions. Degradation of alpha-syn by the proteasome [162, 163] and the formation of inclusions in neuronal cells treated with proteasome inhibitors have been described [164, 165]. On the other hand, the involvement of autophagy and lysosomes has also been demonstrated [166-169]. Evidence has been shown for mutant, and possibly excessive normal alpha-syn facilitating its pathological accumulation by impairing the function of protein degradation processes [170-173]. Cuervo et al. (2004) [170] identified in the alpha-syn sequence, the pentapeptide motif required to target cytosolic proteins to lysosomal degradation via chaperone-mediated autophagy (CMA). In cellular models and rodents, alpha-syn was shown to interact with lysosome-associated membrane protein 2A (LAMP-2A), a transmembrane receptor of substrates for lysosomal degradation, giving evidence to the theory that CMA is involved in its clearance [170, 174]. Accordingly, LAMP-2A gene silencing slowed the degradation of monomeric and oligomeric species of alpha-syn in primary neurons of the ventral midbrain [174]. CMA, however, was not the only pathway for alpha-syn degradation. Vogiatzi et al. (2008) [174] also reported that clearance of WT alpha-syn was in part mediated by macroautophagy. The study involved the selective macroautophagy inhibitor 3-methyladenine (3-MA), which led to a considerable increase of the steady state levels of alpha-syn in PC12 cells and in primary cortical and ventral midbrain neurons, suggesting that dysfunction of this degradation process could also contribute to the gradual accumulation of endogenous WT alpha-syn in sporadic PD. Furthermore, oxidative stress linked to mitochondrial dysfunction may also increase misfolded proteins and therefore lead to aggregation of alpha-syn and subsequent death of

dopaminergic neurons [175]. Thus, alpha-syn aggregation itself may also contribute to increased oxidative stress levels, leading to a vicious cycle in the cell [176]. Pesticides like paraquat and maneb were found to lead to proteasomal dysfunction and nitrative/oxidative damage causing an upregulation and subsequent fibrillization of recombinant alpha-syn [177, 178]. MPTP, a known selective dopaminergic neurotoxin that inhibits mitochondrial complex I activity (as mentioned above) creates an oxidative stress environment that enhances alpha-syn aggregation and consequent death of dopaminergic neurons [176]. Moreover, Dauer and colleagues [179] investigated the toxic effect of MPTP in mice lacking SNCA gene and concluded that these animals were resistant to MPTP, giving support to alpha-syn critical role in the pathogenesis of toxin-induced dopaminergic neuron death. A recent study performed by Kalivendi et al. [180] demonstrated that oxidant-induced alternative splicing of alpha-syn plays a crucial role in the mechanism of dopaminergic neuron cell death, contributing to PD. The authors provided evidence that the parkinsonian mimetic MPP<sup>+</sup> is able to induce alternative splicing of alpha-syn, leading to the deletion of exon-5, which resulted in the generation of a 112 aa protein, instead of the 140 aa WT alpha-syn. This process was deleterious to dopamine cells, since the expression of the 112 aa form of alpha-syn exhibited a more pronounced effect on proteasomal dysfunction and enhanced cell death, when compared to WT alpha-syn. Although alpha-syn function is not yet defined, there seems to be a reciprocal relationship between the activity of this protein and mitochondrial function. As described before, oxidative damage to alpha-syn affects its aggregation - an effect that partially explains the cellular toxicity of the protein. Alpha-syn contains an N-terminal mitochondrial-targeting sequence [181], and cytosol acidification or alpha-syn overexpression can lead the protein to localize to mitochondria [182, 183], resulting in complex I impairment and increased ROS production [181], increased protein tyrosine nitration and decreased mitochondrial transmembrane potential [184]. In addition, it was shown that human embryonic kidney cells that overexpress alpha-syn, show enhanced susceptibility to cell death and have lower ATP levels compared to control cells [183]. In brainstem neurons of mice that overexpress human A53T mutant alpha-syn, there is evidence of degenerating and dysmorphic mitochondria with DNA damage [185]. Furthermore, in both SH-SY5Y neuroblastoma cells and isolated rat mitochondria, alpha-syn seems to induce mitochondrial release of cytochrome c, increased mitochondrial calcium and NO, and oxidative modification of mitochondrial components. These findings suggest a pivotal role for mitochondria in oxidative stress and apoptosis induced by alpha-syn [186]. In a model of aging yeast, functional mitochondria are required for alpha-syn toxicity [187].

Besides all these facts, it has been recognized that alpha-syn is one of the most abundant components of LBs; alpha-syn can aggregate under a variety of post translational

modifications, namely phosphorylation at Serine-129, ubiquitination, C-terminal truncation and nitration [40, 188-193]. Whether these modifications contribute to progressively conduct the protein into insoluble fibrils and modulate toxicity, are still controversial events.

### ***Leucine-rich repeat kinase 2 (LRRK2)***

Mutations in the LRRK2 represent the most common known cause of familial PD and are inherited in autosomal dominant form, but with a significant variation in penetrance. The resulting disease phenotype is identical to sporadic PD, except for a slightly lower age at diagnosis [194], which has increased the interest in this gene. The LRRK2 gene encodes a large multidomain protein with 2527 amino acids, the physiological function of which is currently unknown. However, there are numerous functional domains associated with this protein, including a leucine-rich repeat (LRR) domain, a Ras of complex protein (Roc) GTPase domain followed by its associated C-terminal of Roc (COR) domain, a kinase domain of the tyrosine kinase-like (TKL) subfamily, homologous to other mitogen-activated protein kinase kinase kinase (MAPKKK), and a C-terminal WD40 domain [195] (**Figure 2**). This combination of motifs is highly conserved in vertebrates [196], however, LRRK2 is unusual, since it encodes two distinct enzymes, kinase and GTPase in the same molecule. Initial biochemical studies on LRRK2 suggested that this protein is able to undergo phosphorylation and to phosphorylate generic substrates such as moesin and myelin basic protein (MBP) [197-200] and that the kinase activity is mildly regulated by the GTPase domain [201-204]. The presence of multiple protein interaction domains, namely armadillo (ARM), ankyrin (ANK), LRR and WD40 (**Figure 2**), suggests that LRRK2, in addition to its predicted protein kinase GTPase activities, might work as a multiprotein signaling complex.

The single most common mutation occurring in LRRK2, G2019S, is present in the kinase domain of the protein and augments the kinase activity [200]. This mutation is responsible for both familial (4% worldwide) and apparently sporadic (1% worldwide) PD cases, and has a very low frequency in healthy populations (<0.1% worldwide) [194, 205-207]. Particularly, most patients with the G2019S mutation exhibited  $\alpha$ -syn-positive LBs as in sporadic PD [206, 208, 209]. Tong et al. (2010) [210], showed that accumulation and aggregation of  $\alpha$ -syn and ubiquitinated proteins occurred in aged LRRK2 germ-line deletion mice with great loss of LRRK2. The autophagy-lysosomal pathway was impaired together with an increase in apoptotic cell death, inflammatory response and oxidative stress.

Although LRRK2 is mainly localized to the cytoplasm, approximately 10% of the protein is associated with the outer mitochondrial membrane [200], raising an important question of whether mutant LRRK2 kinase increased activity might directly affect mitochondrial function.

Furthermore, impaired mitochondrial function and an increased susceptibility to apoptosis were observed in *ex vivo* models of fibroblasts from PD patients carrying the G2019S mutation in the LRRK2 gene or based on induced pluripotent stem (iPS) cells that carry the G2019S mutation [211, 212]. In addition, dopaminergic neurons derived from G2019S-iPS cells showed an increase of key oxidative stress response genes and pathogenomic accumulation of alpha-syn [212].

These studies support an involvement of LRRK2 in mitochondrial dysfunction and impaired protein degradation pathways with alpha-syn accumulation and speculate on the kinase activity of the protein, which seems to be required for cellular toxicity and neuronal death.

### **Autosomal Recessive Forms of PD**

Most recessive alleles result in the absence of the encoded protein or inactive protein, and consequently to a loss of function. Homozygous or heterozygous mutations in the recessive genes parkin (PARK2), PTEN-induced putative kinase 1 (PINK1) (PARK6) and DJ-1 (PARK7) are unequivocally associated with heritable, early age at onset, in most cases before age 40 and no atypical signs [213-215]. Furthermore, autosomal recessive PD is characterized by: 1) slowly progressive disease course; 2) excellent response to L-DOPA, although early L-DOPA-induced dyskinesias; and 3) minimal cognitive decline and dysautonomia.

#### ***Parkin***

Mutations in the parkin gene at PARK2 are the most frequent known cause of early-onset (<40-50 years) PD (10-20% worldwide; 50% of recessive familial forms)[216, 217]. Pathological changes include significant loss of dopaminergic neurons in the SN and milder changes in the locus coeruleus. Initially LBs were thought to be absent in the brain [218], but LB-positive cases have been reported in a reduced number of patients with parkin mutations [219].

The parkin gene encodes a protein of 465 amino acids that contains a N-terminal ubiquitin-like (UBL) domain followed by three RING finger domains (RING 0-2) and separated by an in-between-ring (IBR) domain localized at the C-terminal part. Like other RING finger proteins, parkin acts as an Ub E3 ligase. It has an important role in the function of Ub, which is primarily involved in the targeting of aggregation-prone substrates for degradation by the UPS, by conferring substrate specificity [220]. Many ubiquitination substrates have been proposed for parkin, including the aminoacyl-tRNA synthetase cofactor, p38, and a rare 22-kDa glycosylated form of alpha-syn [221-223]. Parkin is predominantly a cytosolic protein, but also co-localizes to synaptic vesicles, the Golgi complex, endoplasmic reticulum and the mitochondrial outer membrane [223-227]. Many PD-linked point mutations alter WT parkin cellular localization,

solubility or propensity to aggregate [228-230]. Other mutations, including insertions or deletions, lead to parkin loss-of-function, specifically loss of its ligase activity, resulting in accumulation of toxic substrates and degeneration [220]. However, the most possibly relevant activity of parkin is related to its neuroprotective function against a variety of pathogenic factors. Particularly, this neuroprotection is given by delaying mitochondrial swelling and rupture and the subsequent cytochrome c release and caspase 3 activation, as shown in cells overexpressing parkin [227]. As mentioned above, parkin can associate to mitochondrial outer membrane, suggesting a direct and local protective effect [231]. The protein is involved in the regulation of transcription and replication of mtDNA in proliferating cells, stimulating this organelle's biogenesis – an effect blocked by parkin short-interfering RNA (siRNA) knockdown [231]. Furthermore, in a knockout mouse line for parkin, reduced number of mitochondrial oxidative phosphorylation proteins, decreased mitochondrial respiratory capacity, age-dependent increased oxidative damage and increased protein and lipid peroxidation were reported [232], leading to nigrostriatal damage. Changes in mitochondrial morphology have been also observed, but this led only to disruption of complex I function in nigral mitochondria and did not result in cell death [233]. Thus, mitochondrial defects and an increased susceptibility to oxygen radical damage were also reported in a parkin knockout model of *Drosophila*, suggesting that abnormalities in parkin ubiquitination function might be secondary in the course of pathogenic events [234, 235]. *In vitro* studies of PARK2-knockdown SH-SY5Y neuroblastoma cell line showed apoptotic cell death and high levels of autoxidized forms of L-DOPA and dopamine, suggesting that parkin might have important antioxidant properties [236]. Rothfuss and co-workers [237] confirmed that the association between parkin and mtDNA led to protection from oxidative stress and stimulation of mitochondrial genome repair. These functions were damaged in parkin-deleted human fibroblasts [237]. Overall, functional parkin seems to be crucial in the maintenance of mitochondrial antioxidant defenses and protection of mtDNA.

### ***PTEN-induced putative kinase 1 (PINK1)***

PINK1 gene (PARK6) mutations are the second most common cause of autosomal recessive, early-onset parkinsonism [147]. Although age at onset for PINK1-related PD is usually in the fourth to fifth decade, clinical features are similar to late onset PD, with slow progression, excellent response to L-DOPA, and in some cases, dementia [238-241]. Nigrostriatal neuronal loss has been observed in post-mortem brains of PD patients with PINK1 mutations [242].

PINK1 is a putative serine/threonine kinase, constituted by 581 amino acids, which is expressed ubiquitously. Until present, homozygous missense and nonsense mutations

affecting the kinase domain, as well as insertions, deletions and truncation of the protein, were observed, all of them supposedly impairing the kinase activity[243, 244].

Due to its N-terminal mitochondrial targeting sequence, PINK1 is localized to the mitochondrial intermembrane space and bound to mitochondrial membranes. However, as PINK1 was also identified as a component of LBs in patients with sporadic PD [242], its final destination within mitochondria is not entirely defined.

Physiological role of PINK1 in mitochondria is thought to include the phosphorylation of mitochondrial proteins in response to cellular stress and the protection against mitochondrial dysfunction [203]. There is evidence that WT PINK1 in contrast to mutant PINK1 may protect neurons from stress-induced mitochondrial dysfunction and apoptosis[245]. Furthermore, loss of PINK1 function in human cell lines originated morphological changes of mitochondria and impaired energy metabolism, showed by a decreased mitochondrial membrane potential [243]. Cells isolated from individuals with a PINK1 mutation that causes a G309D substitution demonstrate reduced complex I activity and evidence of increased oxidative damage compared with cells from age matched controls [246]. Furthermore, PINK1 deficiency in a *Drosophila* model results in the loss of dopaminergic cells, as well as increased susceptibility to oxidative stress and reduced ATP levels [247]. These mutants also showed reduced mitochondrial mass with disorganized morphology. Moreover, PINK1 seems to exert neuroprotective properties, as shown by Petit et al.(2005)[248]where WT, but not mutant PINK1 attenuated staurosporine-induced apoptosis and reduced mitochondrial cytochrome c release when overexpressed in SH-SY5Y cells. Also, silencing of PINK1 increased susceptibility to MPP+ or rotenone [248]. In this context, decreased expression of PINK1 in human dopaminergic neurons led to reduced long-term survival, along with morphological / structural mitochondrial abnormalities and higher levels of oxidative stress [249].

#### PINK1 and Parkin

PINK1 mutants share many phenotypic features with parkin mutants [250, 251]. Therefore, it was suggested that the two proteins could act in common pathways, with parkin working downstream of PINK1, since transgenic expression of parkin rescued all PINK1 impairments, but not the contrary [243, 250, 251]. Goldman et al.(2010)[252], described that PINK1 and parkin both display a role in the mitochondrial targeting of autophagy, a process by which the cells degrade intracellular material through lysosomes. Mitophagy, which is the mitochondrial-specific form of this process, is important in the control of damaged or stressed cellular organelles. The process appears to be upregulated after alterations in mitochondrial membrane permeability [253]. Parkin is selectively recruited from the cytosol to mitochondria

with low membrane potential, where it mediates the degradation of the impaired organelle [254]. PINK1 works as the biochemical signal which allows parkin to identify dysfunctional mitochondria, whose levels are regulated by voltage-dependent proteolysis [255]. The E3 ligase function of parkin, which is constitutively inhibited, is activated upon PINK1-dependent mitochondrial localization [256]. Therefore, defective mitophagy due to a lack of parkin recruitment to impaired mitochondria by PINK1 causes the accumulation of dysfunctional mitochondria and a subsequent enhanced ROS levels and proapoptotic proteins [257]. In addition, overexpression of PINK1 promotes mitochondrial fission, while inhibition of the protein causes an excessive fusion [258, 259]. Fibroblasts from PD patients carrying homozygous PINK1 mutations had truncated mitochondria networks compared to control fibroblasts, when cultured in medium with low glucose, or in the presence of galactose to favor mitochondrial energy metabolism over glycolysis [243, 260]. Moreover, in fibroblasts from patients with parkin gene mutations or subjected to siRNA-mediated parkin gene silencing, an increase in mitochondria interconnectivity was observed, measured as branching, but no differences in organelle length, when compared to control cells [261]. After treatment with the complex I inhibitor rotenone, these fibroblasts from PD patients revealed significantly shorter mitochondria, which was consistent with the hypothesis that parkin deficient cells are more susceptible to insult-induced fission. These observations suggest that the PINK1/parkin pathway may indeed change the balance of mitochondrial dynamics towards fission under basal conditions, but favor a higher degree of functional connectivity of the organelles under conditions of energy depletion or high energy demand. Interestingly, mitochondrial branching was more evident after mitochondrial complex I inhibition in control fibroblasts, which may indicate that increasing mitochondrial connectivity may represent a protective response of cells to an energy crisis [261].

Piccoli and colleagues [262] also performed studies on fibroblasts from a patient with a PINK1 mutation and observed a low mitochondrial respiratory activity and increased oxygen radical production due to complex I inhibition, demonstrating clinically what has been shown experimentally.

### ***DJ-1***

Mutations in DJ-1 gene, also known as PARK7, are the least common cause of autosomal recessive PD (approximately 1% of early-onset PD). The DJ-1-related phenotype, with early-onset and slow disease progression, closely matches that of patients with parkin or PINK1 mutations, but genotype/phenotype correlations could not be precisely performed, due to the small number of DJ-1 patients [146]. DJ-1 gene encodes a protein of 189 amino acids,

belonging to the peptidase C56 family of proteins [263]. It is a cytoplasmic protein, but under stress conditions can also translocate into the mitochondria and nucleus [146, 264]. WT DJ-1 appears to exert an antioxidant function [265-268], while deletions and point mutations in the DJ-1 gene cause a loss of its physiological function and therefore, lead to neurodegeneration in rare families [146, 269-271]. Knockdown of DJ-1 by siRNA in SH-SY5Y human neuroblastoma cell line, enhanced susceptibility to several oxidative insults, including H<sub>2</sub>O<sub>2</sub>, MPP<sup>+</sup> and 6-OHDA [270]. Reciprocally, DJ-1 overexpression in these cells resulted in increased resistance to these insults and reduced intracellular ROS formation [272]. This protection seems to be selective against environmental oxidative stress *in vivo*, as shown in DJ-1 null *Drosophila* treated with paraquat and rotenone [273]. Thus, DJ-1 $\beta$ -deficient flies displayed a locomotor deficit that was exacerbated by oxidative stress [274]. Furthermore, the levels of DJ-1 modification increase with age, also leading to significant increments in oxidative stress and inactivation of its own function [275]. DJ-1-deficient mice demonstrated hypersensitivity to MPTP and this was observed by increased dopaminergic neuronal loss and striatal denervation [276]. In embryonic cortical neurons, an increased sensitivity to oxidative stress and proteasomal inhibition has been also demonstrated, ending in apoptotic cell death [276, 277]. All impairments were reversed by restitution of DJ-1 expression. DJ-1 is normally activated by an oxidative cytoplasmic environment [278]. Shendelman and colleagues (2004) described a role for DJ-1 as a redox-sensitive molecular chaperone, which was able to inhibit alpha-syn aggregate formation. Another study in DJ-1 deficient mice showed that the complex I inhibitor paraquat decreased proteasome activity concomitantly with decreased ATP and regulatory subunit levels [279]. In addition to these effects, the levels of a transcription factor [nuclear factor erythroid 2-related factor 2 (Nrf2)], which activates cytoprotective genes, were reduced. This provided evidence for a role of DJ-1 as a regulator of transcription. The mechanism by which DJ-1 protects against oxidative stress was described by Im et al. (2010) [280]. In this study, the authors demonstrated that DJ-1 regulates the MAP3 kinase apoptosis signaling-regulating kinase 1 (ASK1)/thioredoxin 1 (Trx1) complex. ASK1 is a major effector of cell death induced by oxidative stress and is physiologically inhibited by Trx1. Oxidative insults disrupt this complex, and DJ-1 null cells are more susceptible to this dissociation, leading to increased activation of downstream cell death mediators.

A mitochondria-DJ-1 association was also established. Lev et al. (2008) [272] described a cellular redistribution of DJ-1 in cells exposed to neurotoxins. This work was extended by Hayashi et al. (2009) [281], who showed DJ-1 binding to NADH dehydrogenase (ubiquinone) 1  $\alpha$ -subcomplex 4 (NDUFA4) and to mitochondrial encoded NADH dehydrogenase 1 (ND1), nuclear and mitochondrial DNA-encoding subunits of complex I, respectively, validating the



importance of DJ-1 in mitochondrial function. Recently, a direct link between loss of DJ-1, impaired mitochondrial stress response and reduced clearance of mitochondria by lysosomal degradation was described [282]. An accumulation of fragmented and dysfunctional mitochondria upon reduced basal autophagy contributed to the loss of function phenotype in cells from DJ-1 knockout mouse and human carriers of the E64D mutation in DJ-1 gene [282].

In summary, PD individuals with autosomal recessive inheritance differ generally from those with idiopathic PD, although cases with clinical evolution similar to that of the typical disease have been reported. A rising body of recent information, provides strong support to the idea that mitochondrial dysfunction may be central to the pathophysiology of familial PD, particularly to that of parkinsonian syndromes with autosomal recessive inheritance that directly associate with mitochondria, such as parkin, PINK1 and DJ-1.

### **Psychostimulant drugs of abuse and PD**

Psychostimulant drugs of abuse are psychoactive drugs which induce temporary improvements in mental and/or physical function, such as enhanced alertness, wakefulness and locomotion. These drugs increase the extracellular concentration of monoamines, such as dopamine, leading to increased dopamine transmission [283]. Dopamine is involved in controlling reward, cognition and movement, explaining why these drugs of abuse affect locomotion [284, 285]. Thus, dopamine and related oxidative stress is a common link between PD and psychostimulant neurotoxicity.

Some common aspects between psychostimulant abuse and PD may be found and exposure to amphetamines was suggested to affect the progression of PD, since increased risk of PD was found in individuals hospitalized with conditions related to the use of methamphetamine or other amphetamine-type drugs [286, 287]. Thus, amphetamines may be environmental factors for PD, accounting for a percentage of sporadic PD cases.

### ***Amphetamines, dopamine and PD***

Similarly to PD, the neurotoxicity observed upon exposure to amphetamines may be due to dopamine-induced oxidative stress. Amphetamines increase extraneuronal dopamine and other monoamine levels, through a non-exocytotic mechanism, by directly interacting with monoaminergic cells [283, 286, 287]. Due to its structural similarity with dopamine, amphetamine is a substrate for the DAT [288] and, when in low concentrations, it is transported by the DAT to the cytosol. This leads to an increase in the intracellular binding sites of DAT for dopamine, resulting in the exchange of extracellular amphetamine by intracellular dopamine, and leading to an increase in extracellular dopamine [289]. When present in higher

extracellular concentrations, amphetamine may diffuse into the cell, due to its lipophilicity [290, 291]. Amphetamine also interferes with VMAT-2 function, impairing the active transport of the monoamines into synaptic vesicles, where they are stored. In addition, amphetamine may enter in the vesicles by diffusion, due to its weak base properties [292, for review]. Since amphetamine is a weak base, at acidic pH it accepts protons leading to alkalinization inside the vesicles. A low pH inside the vesicles is essential to maintain the proton gradient used by VMAT-2 for active transport of monoamines into the vesicles. Therefore, amphetamine induces the release of vesicular dopamine to the cytosol and impairs the storage of dopamine in the vesicles. Cytosolic dopamine is then released to the extracellular space via reverse-transport by the DAT. Amphetamine also interferes with dopamine metabolism by inhibiting MAO[293], and with dopamine synthesis, by inhibiting TH[294]. Thus, long-term exposure to amphetamine leads to dopamine depletion [295], and reduction in dopaminergic markers [296].

Amphetamines have been shown to induce common features of PD. A significant association between variations in a highly polymorphic sequence (T10A7) of the alpha-syn gene and methamphetamine psychosis/dependence was found in female human abusers of methamphetamine [297].

Neurotoxic events occurring in amphetamine consumption and in PD seem to share a number of steps related with the mechanisms of neuronal dysfunction involving the UPS. In particular, amphetamines were previously described to induce neuronal inclusions and affect proteins belonging to the UPS, in the central nervous system [298]; moreover, ultrastructural and molecular changes were similar to those occurring in PD [299]. Amphetamine-induced neuronal inclusions present many features similar to those observed in PD, and the maturation of these inclusions can be reproduced by continuous exposure to parkinsonian neurotoxins such as rotenone [84, 300] or MPTP [301]. In mice, occurrence of neuronal inclusions combined with increased nigral expression of alpha-syn within dopaminergic neurons were found upon treatment with amphetamine derivatives [302], similarly to what occurs following administration of the parkinsonian toxin MPTP [303]. Furthermore, treatment of mice with methamphetamine increased markers of oxidative stress in the striatum and increased the levels of oligomeric alpha-syn in the SN [304]. In this context, increased alpha-syn expression following methamphetamine may be a protective mechanism, since alpha-syn fibrils sequester the toxic species formed upon intracellular dopamine oxidation, preventing further oxidative damage [128].

Exposure to amphetamine or amphetamine derivatives has been shown to induce oxidative stress in the nervous system [305, 306]. Methamphetamine and D-amphetamine have been

shown to increase ROS levels upon *in vitro*[307, 308] or *in vivo*[309, 310] exposure and the toxic effects of these drugs may be prevented by antioxidants. Moreover, in methamphetamine human abusers the activity of antioxidant enzymes was affected in several regions of the brain [311]. In animal models, methamphetamine [312] and D-amphetamine [313, 314] also affected the activity of antioxidant enzymes. In addition, evidences of oxidative damage have been reported in the brains of methamphetamine human abusers [315] and methamphetamine [312] or D-amphetamine [309]exposed animals.

In PC12 catecholaminergic cell cultures, we have previously shown that prolonged exposure to low (non-toxic) concentrations of D-amphetamine induces a partial protection against H<sub>2</sub>O<sub>2</sub>-induced toxicity, which was suggested to be associated with adaptation to oxidative stress [316]. Other authors showed that a short-term exposure to subtoxic concentrations of methamphetamine can protect dopaminergic cells against a larger oxidative stress injury, through upregulation of Bcl-2 [317].

Thus, amphetamines affect the major mechanisms associated with sporadic and genetic PD, including dopamine depletion, alpha-syn oligomerization, UPS and mitochondrial dysfunctions and oxidative stress.

## General Conclusions

Cardinal cellular features of idiopathic PD are classically linked to mitochondrial dysfunction and oxidative stress, which has a strong basis both on mitochondrial complex I inhibition and dopamine autoxidation. Interestingly, alpha-syn, a protein present in LBs and which expression and mutations cause one of the familial autosomal dominant forms of PD, promotes ROS formation and interacts with dopaminequinones. On the other hand, LRRK2 mutations have been linked to late onset cases of PD (resembling sporadic forms), leading to altered mitochondrial function and alpha-syn aggregation. Evidences for mitochondrial dysfunction and oxidative stress are also very clear today in some autosomal recessive familial forms of PD caused by mutations in parkin, PINK1 and DJ-1, which directly associate and regulate mitochondrial function, dynamics and degradation.

Interestingly, abuse of psychostimulants, namely amphetamines, have been largely described to affect dopaminergic transmission and function, and induce dopamine depletion. Although these drugs may not directly evoke PD, they may predispose the central nervous system for PD-like syndromes in the long-term exposure, as evidenced by neurotoxic events linked to dopamine-induced oxidative stress and decreased protein quality control. Taking into account the described commonalities between PD pathogenesis and amphetamine addiction, defining

effective strategies of protection of dopaminergic neurons in PD patients could also benefit drug abusers. **Figure 3** summarizes the sources of oxidative stress in familial and sporadic PD, as well as the mechanisms elicited by amphetamine drugs of abuse.

Accepted manuscript

## References

- [1] de Rijk M.C., Launer L.J., Berger K., Breteler M.M., Dartigues J.F., Baldereschi M. et al. Prevalence of Parkinson's disease in Europe: A collaborative study of population-based cohorts. Neurologic Diseases in the Elderly Research Group. *Neurology* ;**54**:S21-S23;2000
- [2] Bekris L.M., Mata I.F., Zabetian C.P. The genetics of Parkinson disease. *J Geriatr Psychiatry Neurol* ;**23**:228-42;2010
- [3] Sellbach A.N., Boyle R.S., Silburn P.A., Mellick G.D. Parkinson's disease and family history. *Parkinsonism Relat Disord* ;**12**:399-409;2006
- [4] Farrer M.J. Genetics of Parkinson disease: paradigm shifts and future prospects. *Nat Rev Genet* ;**7**:306-18;2006
- [5] de Lau L.M., Breteler M.M. Epidemiology of Parkinson's disease. *Lancet Neurol* ;**5**:525-35;2006
- [6] Mounsey R.B., Teismann P. Mitochondrial dysfunction in Parkinson's disease: pathogenesis and neuroprotection. *Parkinsons Dis* ;**2011**:617472;2010
- [7] Schapira A.H. Etiology and pathogenesis of Parkinson disease. *Neurol Clin* ;**27**:583-603, v;2009
- [8] Schapira A.H., Cooper J.M., Dexter D., Clark J.B., Jenner P., Marsden C.D. Mitochondrial complex I deficiency in Parkinson's disease. *J Neurochem* ;**54**:823-7;1990
- [9] Schapira A.H., Cooper J.M., Dexter D., Jenner P., Clark J.B., Marsden C.D. Mitochondrial complex I deficiency in Parkinson's disease. *Lancet* ;**1**:1269;1989
- [10] Dexter D.T., Jenner P., Schapira A.H., Marsden C.D. Alterations in levels of iron, ferritin, and other trace metals in neurodegenerative diseases affecting the basal ganglia. The Royal Kings and Queens Parkinson's Disease Research Group. *Ann Neurol* ;**32 Suppl**:S94-100;1992
- [11] Owen A.D., Schapira A.H., Jenner P., Marsden C.D. Oxidative stress and Parkinson's disease. *Ann N Y Acad Sci* ;**786**:217-23;1996
- [12] Mann V.M., Cooper J.M., Schapira A.H. Quantitation of a mitochondrial DNA deletion in Parkinson's disease. *FEBS Lett* ;**299**:218-22;1992
- [13] Schapira A.H. Oxidative stress in Parkinson's disease. *Neuropathol Appl Neurobiol* ;**21**:3-9;1995
- [14] Gu M., Owen A.D., Toffa S.E., Cooper J.M., Dexter D.T., Jenner P. et al. Mitochondrial function, GSH and iron in neurodegeneration and Lewy body diseases. *J Neurol Sci* ;**158**:24-9;1998
- [15] Schapira A.H. Challenges to the development of disease-modifying therapies in Parkinson's disease. *Eur J Neurol* ;**18 Suppl 1**:16-21;2011
- [16] Rego A.C., Oliveira C.R. Mitochondrial dysfunction and reactive oxygen species in excitotoxicity and apoptosis: implications for the pathogenesis of neurodegenerative diseases. *Neurochem Res* ;**28**:1563-74;2003

- [17] Dickson D.W., Braak H., Duda J.E., Duyckaerts C., Gasser T., Halliday G.M. et al. Neuropathological assessment of Parkinson's disease: refining the diagnostic criteria. *Lancet Neurol* ;**8**:1150-7;2009
- [18] Halliday G., Lees A., Stern M. Milestones in Parkinson's disease--clinical and pathologic features. *Mov Disord* ;**26**:1015-21;2011
- [19] Fearnley J.M., Lees A.J. Ageing and Parkinson's disease: substantia nigra regional selectivity. *Brain* ;**114 ( Pt 5)**:2283-301;1991
- [20] Dunning C.J., Reyes J.F., Steiner J.A., Brundin P. Can Parkinson's disease pathology be propagated from one neuron to another? *Prog Neurobiol* ;2011
- [21] Samii A., Nutt J.G., Ransom B.R. Parkinson's disease. *Lancet* ;**363**:1783-93;2004
- [22] George J.M. The synucleins. *Genome Biol* ;**3**:REVIEWS3002;2002
- [23] Probst A., Bloch A., Tolnay M. New insights into the pathology of Parkinson's disease: does the peripheral autonomic system become central? *Eur J Neurol* ;**15 Suppl 1**:1-4;2008
- [24] Schapira A.H., Jenner P. Etiology and pathogenesis of Parkinson's disease. *Mov Disord* ;**26**:1049-55;2011
- [25] Poskanzer D.C., Schwab R.S. COHORT ANALYSIS OF PARKINSON'S SYNDROME: EVIDENCE FOR A SINGLE ETIOLOGY RELATED TO SUBCLINICAL INFECTION ABOUT 1920. *J Chronic Dis* ;**16**:961-73;1963
- [26] Corti O., Lesage S., Brice A. What genetics tells us about the causes and mechanisms of Parkinson's disease. *Physiol Rev* ;**91**:1161-218;2011
- [27] Lotharius J., O'Malley K.L. Role of mitochondrial dysfunction and dopamine-dependent oxidative stress in amphetamine-induced toxicity. *Ann Neurol* ;**49**:79-89;2001
- [28] Klaidman L.K., Adams J.D., Jr., Leung A.C., Kim S.S., Cadenas E. Redox cycling of MPP+: evidence for a new mechanism involving hydride transfer with xanthine oxidase, aldehyde dehydrogenase, and lipoamide dehydrogenase. *Free Radic Biol Med* ;**15**:169-79;1993
- [29] Langston J.W., Ballard P., Tetrud J.W., Irwin I. Chronic Parkinsonism in humans due to a product of meperidine-analog synthesis. *Science* ;**219**:979-80;1983
- [30] Ross O.A., Braithwaite A.T., Skipper L.M., Kachergus J., Hulihan M.M., Middleton F.A. et al. Genomic investigation of alpha-synuclein multiplication and parkinsonism. *Ann Neurol* ;**63**:743-50;2008
- [31] Betarbet R., Sherer T.B., MacKenzie G., Garcia-Osuna M., Panov A.V., Greenamyre J.T. Chronic systemic pesticide exposure reproduces features of Parkinson's disease. *Nat Neurosci* ;**3**:1301-6;2000
- [32] Sherer T.B., Kim J.H., Betarbet R., Greenamyre J.T. Subcutaneous rotenone exposure causes highly selective dopaminergic degeneration and alpha-synuclein aggregation. *Exp Neurol* ;**179**:9-16;2003
- [33] Sherer T.B., Betarbet R., Testa C.M., Seo B.B., Richardson J.R., Kim J.H. et al. Mechanism of toxicity in rotenone models of Parkinson's disease. *J Neurosci* ;**23**:10756-64;2003
- [34] Di Monte D.A. The environment and Parkinson's disease: is the nigrostriatal system preferentially targeted by neurotoxins? *Lancet Neurol* ;**2**:531-8;2003

- [35] Elbaz A., Moisan F. Update in the epidemiology of Parkinson's disease. *Curr Opin Neurol* ;**21**:454-60;2008
- [36] Ascherio A., Zhang S.M., Hernan M.A., Kawachi I., Colditz G.A., Speizer F.E. et al. Prospective study of caffeine consumption and risk of Parkinson's disease in men and women. *Ann Neurol* ;**50**:56-63;2001
- [37] Warner T.T., Schapira A.H. Genetic and environmental factors in the cause of Parkinson's disease. *Ann Neurol* ;**53 Suppl 3**:S16-S23;2003
- [38] Polymeropoulos M.H., Higgins J.J., Golbe L.I., Johnson W.G., Ide S.E., Di I.G. et al. Mapping of a gene for Parkinson's disease to chromosome 4q21-q23. *Science* ;**274**:1197-9;1996
- [39] Polymeropoulos M.H., Lavedan C., Leroy E., Ide S.E., Dehejia A., Dutra A. et al. Mutation in the alpha-synuclein gene identified in families with Parkinson's disease. *Science* ;**276**:2045-7;1997
- [40] Spillantini M.G., Schmidt M.L., Lee V.M., Trojanowski J.Q., Jakes R., Goedert M. Alpha-synuclein in Lewy bodies. *Nature* ;**388**:839-40;1997
- [41] Belin A.C., Westerlund M. Parkinson's disease: a genetic perspective. *FEBS J* ;**275**:1377-83;2008
- [42] Satake W., Nakabayashi Y., Mizuta I., Hirota Y., Ito C., Kubo M. et al. Genome-wide association study identifies common variants at four loci as genetic risk factors for Parkinson's disease. *Nat Genet* ;**41**:1303-7;2009
- [43] Simon-Sanchez J., Schulte C., Bras J.M., Sharma M., Gibbs J.R., Berg D. et al. Genome-wide association study reveals genetic risk underlying Parkinson's disease. *Nat Genet* ;**41**:1308-12;2009
- [44] Pankratz N., Wilk J.B., Latourelle J.C., DeStefano A.L., Halter C., Pugh E.W. et al. Genomewide association study for susceptibility genes contributing to familial Parkinson disease. *Hum Genet* ;**124**:593-605;2009
- [45] Hamza T.H., Zabetian C.P., Tenesa A., Laederach A., Montimurro J., Yearout D. et al. Common genetic variation in the HLA region is associated with late-onset sporadic Parkinson's disease. *Nat Genet* ;**42**:781-5;2010
- [46] Paisan-Ruiz C., Bhatia K.P., Li A., Hernandez D., Davis M., Wood N.W. et al. Characterization of PLA2G6 as a locus for dystonia-parkinsonism. *Ann Neurol* ;**65**:19-23;2009
- [47] Di F.A., Dekker M.C., Montagna P., Baruzzi A., Yonova E.H., Correia G.L. et al. FBXO7 mutations cause autosomal recessive, early-onset parkinsonian-pyramidal syndrome. *Neurology* ;**72**:240-5;2009
- [48] Hicks A.A., Petursson H., Jonsson T., Stefansson H., Johannsdottir H.S., Sainz J. et al. A susceptibility gene for late-onset idiopathic Parkinson's disease. *Ann Neurol* ;**52**:549-55;2002
- [49] Lautier C., Goldwurm S., Durr A., Giovannone B., Tsiaras W.G., Pezzoli G. et al. Mutations in the GIGYF2 (TNRC15) gene at the PARK11 locus in familial Parkinson disease. *Am J Hum Genet* ;**82**:822-33;2008
- [50] Leroy E., Boyer R., Auburger G., Leube B., Ulm G., Mezey E. et al. The ubiquitin pathway in Parkinson's disease. *Nature* ;**395**:451-2;1998

- [51] Gasser T., Muller-Myhsok B., Wszolek Z.K., Oehlmann R., Calne D.B., Bonifati V. et al. A susceptibility locus for Parkinson's disease maps to chromosome 2p13. *Nat Genet* ;**18**:262-5;1998
- [52] Strauss K.M., Martins L.M., Plun-Favreau H., Marx F.P., Kautzmann S., Berg D. et al. Loss of function mutations in the gene encoding Omi/HtrA2 in Parkinson's disease. *Hum Mol Genet* ;**14**:2099-111;2005
- [53] Pankratz N., Nichols W.C., Uniacke S.K., Halter C., Murrell J., Rudolph A. et al. Genome-wide linkage analysis and evidence of gene-by-gene interactions in a sample of 362 multiplex Parkinson disease families. *Hum Mol Genet* ;**12**:2599-608;2003
- [54] Lesage S., Brice A. Parkinson's disease: from monogenic forms to genetic susceptibility factors. *Hum Mol Genet* ;**18**:R48-R59;2009
- [55] Paisan-Ruiz C. LRRK2 gene variation and its contribution to Parkinson disease. *Hum Mutat* ;**30**:1153-60;2009
- [56] Kosaka K., Tsuchiya K., Yoshimura M. Lewy body disease with and without dementia: a clinicopathological study of 35 cases. *Clin Neuropathol* ;**7**:299-305;1988
- [57] Braak H., Braak E., Yilmazer D., Schultz C., de Vos R.A., Jansen E.N. Nigral and extranigral pathology in Parkinson's disease. *J Neural Transm Suppl* ;**46**:15-31;1995
- [58] Macdonald V., Halliday G.M. Selective loss of pyramidal neurons in the pre-supplementary motor cortex in Parkinson's disease. *Mov Disord* ;**17**:1166-73;2002
- [59] Henderson J.M., Carpenter K., Cartwright H., Halliday G.M. Degeneration of the centre median-parafascicular complex in Parkinson's disease. *Ann Neurol* ;**47**:345-52;2000
- [60] McRitchie D.A., Cartwright H.R., Halliday G.M. Specific A10 dopaminergic nuclei in the midbrain degenerate in Parkinson's disease. *Exp Neurol* ;**144**:202-13;1997
- [61] Bohnen N.I., Albin R.L. The cholinergic system and Parkinson disease. *Behav Brain Res* ;**221**:564-73;2011
- [62] Fronczek R., Overeem S., Lee S.Y., Hegeman I.M., van P.J., van Duinen S.G. et al. Hypocretin (orexin) loss in Parkinson's disease. *Brain* ;**130**:1577-85;2007
- [63] Thannickal T.C., Lai Y.Y., Siegel J.M. Hypocretin (orexin) cell loss in Parkinson's disease. *Brain* ;**130**:1586-95;2007
- [64] Halliday G.M., Li Y.W., Blumbergs P.C., Joh T.H., Cotton R.G., Howe P.R. et al. Neuropathology of immunohistochemically identified brainstem neurons in Parkinson's disease. *Ann Neurol* ;**27**:373-85;1990
- [65] Harding A.J., Stimson E., Henderson J.M., Halliday G.M. Clinical correlates of selective pathology in the amygdala of patients with Parkinson's disease. *Brain* ;**125**:2431-45;2002
- [66] Kingsbury A.E., Bandopadhyay R., Silveira-Moriyama L., Ayling H., Kallis C., Sterlacci W. et al. Brain stem pathology in Parkinson's disease: an evaluation of the Braak staging model. *Mov Disord* ;**25**:2508-15;2010
- [67] Hoogendijk W.J., Pool C.W., Troost D., van Z.E., Swaab D.F. Image analyser-assisted morphometry of the locus coeruleus in Alzheimer's disease, Parkinson's disease and amyotrophic lateral sclerosis. *Brain* ;**118** ( Pt 1):131-43;1995



- [68] Pedersen K.M., Marner L., Pakkenberg H., Pakkenberg B. No global loss of neocortical neurons in Parkinson's disease: a quantitative stereological study. *Mov Disord* ;**20**:164-71;2005
- [69] Double K.L., Halliday G.M., McRitchie D.A., Reid W.G., Hely M.A., Morris J.G. Regional brain atrophy in idiopathic parkinson's disease and diffuse Lewy body disease. *Dementia* ;**7**:304-13;1996
- [70] Dalaker T.O., Zivadinov R., Larsen J.P., Beyer M.K., Cox J.L., Alves G. et al. Gray matter correlations of cognition in incident Parkinson's disease. *Mov Disord* ;**25**:629-33;2010
- [71] Braak H., Del T.K., Bratzke H., Hamm-Clement J., Sandmann-Keil D., Rub U. Staging of the intracerebral inclusion body pathology associated with idiopathic Parkinson's disease (preclinical and clinical stages). *J Neurol* ;**249 Suppl 3**:III/1-III/5;2002
- [72] Braak H., Del T.K., Rub U., de Vos R.A., Jansen Steur E.N., Braak E. Staging of brain pathology related to sporadic Parkinson's disease. *Neurobiol Aging* ;**24**:197-211;2003
- [73] Braak H., Ghebremedhin E., Rub U., Bratzke H., Del T.K. Stages in the development of Parkinson's disease-related pathology. *Cell Tissue Res* ;**318**:121-34;2004
- [74] Duda J.E., Lee V.M., Trojanowski J.Q. Neuropathology of synuclein aggregates. *J Neurosci Res* ;**61**:121-7;2000
- [75] Halliday G.M., McCann H. The progression of pathology in Parkinson's disease. *Ann N Y Acad Sci* ;**1184**:188-95;2010
- [76] Hawkes C.H., Del T.K., Braak H. A timeline for Parkinson's disease. *Parkinsonism Relat Disord* ;**16**:79-84;2010
- [77] Brundin P., Li J.Y., Holton J.L., Lindvall O., Revesz T. Research in motion: the enigma of Parkinson's disease pathology spread. *Nat Rev Neurosci* ;**9**:741-5;2008
- [78] Kalaitzakis M.E., Graeber M.B., Gentleman S.M., Pearce R.K. The dorsal motor nucleus of the vagus is not an obligatory trigger site of Parkinson's disease: a critical analysis of alpha-synuclein staging. *Neuropathol Appl Neurobiol* ;**34**:284-95;2008
- [79] Attems J., Jellinger K.A. The dorsal motor nucleus of the vagus is not an obligatory trigger site of Parkinson's disease. *Neuropathol Appl Neurobiol* ;**34**:466-7;2008
- [80] Tsang A.H., Chung K.K. Oxidative and nitrosative stress in Parkinson's disease. *Biochim Biophys Acta* ;**1792**:643-50;2009
- [81] Danielson S.R., Andersen J.K. Oxidative and nitrative protein modifications in Parkinson's disease. *Free Radic Biol Med* ;**44**:1787-94;2008
- [82] Seet R.C., Lee C.Y., Lim E.C., Tan J.J., Quek A.M., Chong W.L. et al. Oxidative damage in Parkinson disease: Measurement using accurate biomarkers. *Free Radic Biol Med* ;**48**:560-6;2010
- [83] Navarro A., Boveris A. Brain mitochondrial dysfunction and oxidative damage in Parkinson's disease. *J Bioenerg Biomembr* ;**41**:517-21;2009
- [84] Betarbet R., Sherer T.B., MacKenzie G., Garcia-Osuna M., Panov A.V., Greenamyre J.T. Chronic systemic pesticide exposure reproduces features of Parkinson's disease. *Nat Neurosci* ;**3**:1301-6;2000

- [85] Dexter D.T., Carter C.J., Wells F.R., Javoy-Agid F., Agid Y., Lees A. et al. Basal lipid peroxidation in substantia nigra is increased in Parkinson's disease. *J Neurochem* ;**52**:381-9;1989
- [86] Yoritaka A., Hattori N., Uchida K., Tanaka M., Stadtman E.R., Mizuno Y. Immunohistochemical detection of 4-hydroxynonenal protein adducts in Parkinson disease. *Proc Natl Acad Sci U S A* ;**93**:2696-701;1996
- [87] Alam Z.I., Jenner A., Daniel S.E., Lees A.J., Cairns N., Marsden C.D. et al. Oxidative DNA damage in the parkinsonian brain: an apparent selective increase in 8-hydroxyguanine levels in substantia nigra. *J Neurochem* ;**69**:1196-203;1997
- [88] Zhang J., Perry G., Smith M.A., Robertson D., Olson S.J., Graham D.G. et al. Parkinson's disease is associated with oxidative damage to cytoplasmic DNA and RNA in substantia nigra neurons. *Am J Pathol* ;**154**:1423-9;1999
- [89] Alam Z.I., Daniel S.E., Lees A.J., Marsden D.C., Jenner P., Halliwell B. A generalised increase in protein carbonyls in the brain in Parkinson's but not incidental Lewy body disease. *J Neurochem* ;**69**:1326-9;1997
- [90] Floor E., Wetzel M.G. Increased protein oxidation in human substantia nigra pars compacta in comparison with basal ganglia and prefrontal cortex measured with an improved dinitrophenylhydrazine assay. *J Neurochem* ;**70**:268-75;1998
- [91] Good P.F., Hsu A., Werner P., Perl D.P., Olanow C.W. Protein nitration in Parkinson's disease. *J Neuropathol Exp Neurol* ;**57**:338-42;1998
- [92] Duda J.E., Giasson B.I., Chen Q., Gur T.L., Hurtig H.I., Stern M.B. et al. Widespread nitration of pathological inclusions in neurodegenerative synucleinopathies. *Am J Pathol* ;**157**:1439-45;2000
- [93] Ferrante R.J., Hantraye P., Brouillet E., Beal M.F. Increased nitrotyrosine immunoreactivity in substantia nigra neurons in MPTP treated baboons is blocked by inhibition of neuronal nitric oxide synthase. *Brain Res* ;**823**:177-82;1999
- [94] Pennathur S., Jackson-Lewis V., Przedborski S., Heinecke J.W. Mass spectrometric quantification of 3-nitrotyrosine, ortho-tyrosine, and o,o'-dityrosine in brain tissue of 1-methyl-4-phenyl-1,2,3, 6-tetrahydropyridine-treated mice, a model of oxidative stress in Parkinson's disease. *J Biol Chem* ;**274**:34621-8;1999
- [95] Perry T.L., Godin D.V., Hansen S. Parkinson's disease: a disorder due to nigral glutathione deficiency? *Neurosci Lett* ;**33**:305-10;1982
- [96] Perry T.L., Yong V.W. Idiopathic Parkinson's disease, progressive supranuclear palsy and glutathione metabolism in the substantia nigra of patients. *Neurosci Lett* ;**67**:269-74;1986
- [97] Pearce R.K., Owen A., Daniel S., Jenner P., Marsden C.D. Alterations in the distribution of glutathione in the substantia nigra in Parkinson's disease. *J Neural Transm* ;**104**:661-77;1997
- [98] Hirsch E.C. Why are nigral catecholaminergic neurons more vulnerable than other cells in Parkinson's disease? *Ann Neurol* ;**32 Suppl**:S88-S93;1992
- [99] Sulzer D. Multiple hit hypotheses for dopamine neuron loss in Parkinson's disease. *Trends Neurosci* ;**30**:244-50;2007
- [100] Zecca L., Tampellini D., Gerlach M., Riederer P., Fariello R.G., Sulzer D. Substantia nigra neuromelanin: structure, synthesis, and molecular behaviour. *Mol Pathol* ;**54**:414-8;2001

- [101] Dexter D.T., Wells F.R., Lees A.J., Agid F., Agid Y., Jenner P. et al. Increased nigral iron content and alterations in other metal ions occurring in brain in Parkinson's disease. *J Neurochem* ;**52**:1830-6;1989
- [102] Gutteridge J.M. Hydroxyl radicals, iron, oxidative stress, and neurodegeneration. *Ann N Y Acad Sci* ;**738**:201-13;1994
- [103] Zecca L., Casella L., Albertini A., Bellei C., Zucca F.A., Engelen M. et al. Neuromelanin can protect against iron-mediated oxidative damage in system modeling iron overload of brain aging and Parkinson's disease. *J Neurochem* ;**106**:1866-75;2008
- [104] Sian-Hulsmann J., Mandel S., Youdim M.B., Riederer P. The relevance of iron in the pathogenesis of Parkinson's disease. *J Neurochem* ;2010
- [105] Bougria M., Vitorica J., Cano J., Machado A. Implication of dopamine transporter system on 1-methyl-4-phenylpyridinium and rotenone effect in striatal synaptosomes. *Eur J Pharmacol* ;**291**:407-15;1995
- [106] Gomez C., Bandez M.J., Navarro A. Pesticides and impairment of mitochondrial function in relation with the parkinsonian syndrome. *Front Biosci* ;**12**:1079-93;2007
- [107] Henchcliffe C., Beal M.F. Mitochondrial biology and oxidative stress in Parkinson disease pathogenesis. *Nat Clin Pract Neurol* ;**4**:600-9;2008
- [108] Kudin A.P., Bimpong-Buta N.Y., Vielhaber S., Elger C.E., Kunz W.S. Characterization of superoxide-producing sites in isolated brain mitochondria. *J Biol Chem* ;**279**:4127-35;2004
- [109] Janetzky B., Hauck S., Youdim M.B., Riederer P., Jellinger K., Pantucek F. et al. Unaltered aconitase activity, but decreased complex I activity in substantia nigra pars compacta of patients with Parkinson's disease. *Neurosci Lett* ;**169**:126-8;1994
- [110] Schapira A.H., Cooper J.M., Dexter D., Clark J.B., Jenner P., Marsden C.D. Mitochondrial complex I deficiency in Parkinson's disease. *J Neurochem* ;**54**:823-7;1990
- [111] Schapira A.H., Cooper J.M., Dexter D., Jenner P., Clark J.B., Marsden C.D. Mitochondrial complex I deficiency in Parkinson's disease. *Lancet* ;**1**:1269;1989
- [112] Mann V.M., Cooper J.M., Krige D., Daniel S.E., Schapira A.H., Marsden C.D. Brain, skeletal muscle and platelet homogenate mitochondrial function in Parkinson's disease. *Brain* ;**115 (Pt 2)**:333-42;1992
- [113] Navarro A., Boveris A., Bandez M.J., Sanchez-Pino M.J., Gomez C., Muntane G. et al. Human brain cortex: mitochondrial oxidative damage and adaptive response in Parkinson disease and in dementia with Lewy bodies. *Free Radic Biol Med* ;**46**:1574-80;2009
- [114] Keeney P.M., Xie J., Capaldi R.A., Bennett J.P., Jr. Parkinson's disease brain mitochondrial complex I has oxidatively damaged subunits and is functionally impaired and misassembled. *J Neurosci* ;**26**:5256-64;2006
- [115] Szabo C., Ischiropoulos H., Radi R. Peroxynitrite: biochemistry, pathophysiology and development of therapeutics. *Nat Rev Drug Discov* ;**6**:662-80;2007
- [116] Brown G.C., Borutaite V. Inhibition of mitochondrial respiratory complex I by nitric oxide, peroxynitrite and S-nitrosothiols. *Biochim Biophys Acta* ;**1658**:44-9;2004
- [117] Hastings T.G. The role of dopamine oxidation in mitochondrial dysfunction: implications for Parkinson's disease. *J Bioenerg Biomembr* ;**41**:469-72;2009

- [118] Staal R.G., Mosharov E.V., Sulzer D. Dopamine neurons release transmitter via a flickering fusion pore. *Nat Neurosci* ;**7**:341-6;2004
- [119] Caudle W.M., Colebrooke R.E., Emson P.C., Miller G.W. Altered vesicular dopamine storage in Parkinson's disease: a premature demise. *Trends Neurosci* ;**31**:303-8;2008
- [120] Mosharov E.V., Staal R.G., Bove J., Prou D., Hananiya A., Markov D. et al. Alpha-synuclein overexpression increases cytosolic catecholamine concentration. *J Neurosci* ;**26**:9304-11;2006
- [121] Shih J.C., Chen K., Ridd M.J. Monoamine oxidase: from genes to behavior. *Annu Rev Neurosci* ;**22**:197-217;1999
- [122] Stokes A.H., Hastings T.G., Vrana K.E. Cytotoxic and genotoxic potential of dopamine. *J Neurosci Res* ;**55**:659-65;1999
- [123] Mazzulli J.R., Mishizen A.J., Giasson B.I., Lynch D.R., Thomas S.A., Nakashima A. et al. Cytosolic catechols inhibit alpha-synuclein aggregation and facilitate the formation of intracellular soluble oligomeric intermediates. *J Neurosci* ;**26**:10068-78;2006
- [124] LaVoie M.J., Ostaszewski B.L., Weihofen A., Schlossmacher M.G., Selkoe D.J. Dopamine covalently modifies and functionally inactivates parkin. *Nat Med* ;**11**:1214-21;2005
- [125] Van Laar V.S., Mishizen A.J., Cascio M., Hastings T.G. Proteomic identification of dopamine-conjugated proteins from isolated rat brain mitochondria and SH-SY5Y cells. *Neurobiol Dis* ;**34**:487-500;2009
- [126] Kuhn D.M., Arthur R.E., Jr., Thomas D.M., Elferink L.A. Tyrosine hydroxylase is inactivated by catechol-quinones and converted to a redox-cycling quinoprotein: possible relevance to Parkinson's disease. *J Neurochem* ;**73**:1309-17;1999
- [127] Conway K.A., Rochet J.C., Bieganski R.M., Lansbury P.T., Jr. Kinetic stabilization of the alpha-synuclein protofibril by a dopamine-alpha-synuclein adduct. *Science* ;**294**:1346-9;2001
- [128] Mauceli G., Busceti C.I., Pellegrini A., Soldani P., Lenzi P., Paparelli A. et al. Overexpression of alpha-synuclein following methamphetamine: is it good or bad? *Ann N Y Acad Sci* ;**1074**:191-7;2006
- [129] Xu J., Kao S.Y., Lee F.J., Song W., Jin L.W., Yankner B.A. Dopamine-dependent neurotoxicity of alpha-synuclein: a mechanism for selective neurodegeneration in Parkinson disease. *Nat Med* ;**8**:600-6;2002
- [130] Lee F.J., Liu F., Pristupa Z.B., Niznik H.B. Direct binding and functional coupling of alpha-synuclein to the dopamine transporters accelerate dopamine-induced apoptosis. *FASEB J* ;**15**:916-26;2001
- [131] Michel P.P., Ruberg M., Hirsch E. Dopaminergic neurons reduced to silence by oxidative stress: an early step in the death cascade in Parkinson's disease? *Sci STKE* ;**2006**:e19;2006
- [132] Jenner P. Oxidative stress in Parkinson's disease. *Ann Neurol* ;**53 Suppl 3**:S26-S36;2003
- [133] Greenamyre J.T., Hastings T.G. Biomedicine. Parkinson's--divergent causes, convergent mechanisms. *Science* ;**304**:1120-2;2004
- [134] Volbracht C., van B.J., Zhu C., Blomgren K., Leist M. Neuroprotective properties of memantine in different in vitro and in vivo models of excitotoxicity. *Eur J Neurosci* ;**23**:2611-22;2006

- [135] Turski L., Bressler K., Rettig K.J., Loschmann P.A., Wachtel H. Protection of substantia nigra from MPP+ neurotoxicity by N-methyl-D-aspartate antagonists. *Nature* ;**349**:414-8;1991
- [136] Zuddas A., Oberto G., Vaglini F., Fascetti F., Fornai F., Corsini G.U. MK-801 prevents 1-methyl-4-phenyl-1,2,3,6-tetrahydropyridine-induced parkinsonism in primates. *J Neurochem* ;**59**:733-9;1992
- [137] Tabatabaei A., Perry T.L., Hansen S., Krieger C. Partial protective effect of MK-801 on MPTP-induced reduction of striatal dopamine in mice. *Neurosci Lett* ;**141**:192-4;1992
- [138] Brouillet E., Beal M.F. NMDA antagonists partially protect against MPTP induced neurotoxicity in mice. *Neuroreport* ;**4**:387-90;1993
- [139] Johnson K.A., Conn P.J., Niswender C.M. Glutamate receptors as therapeutic targets for Parkinson's disease. *CNS Neurol Disord Drug Targets* ;**8**:475-91;2009
- [140] Greenamyre J.T. Glutamatergic influences on the basal ganglia. *Clin Neuropharmacol* ;**24**:65-70;2001
- [141] McCormack J.G., Halestrap A.P., Denton R.M. Role of calcium ions in regulation of mammalian intramitochondrial metabolism. *Physiol Rev* ;**70**:391-425;1990
- [142] Kowaltowski A.J., de Souza-Pinto N.C., Castilho R.F., Vercesi A.E. Mitochondria and reactive oxygen species. *Free Radic Biol Med* ;**47**:333-43;2009
- [143] Sheehan J.P., Swerdlow R.H., Parker W.D., Miller S.W., Davis R.E., Tuttle J.B. Altered calcium homeostasis in cells transformed by mitochondria from individuals with Parkinson's disease. *J Neurochem* ;**68**:1221-33;1997
- [144] Esteves A.R., Arduino D.M., Swerdlow R.H., Oliveira C.R., Cardoso S.M. Oxidative stress involvement in alpha-synuclein oligomerization in Parkinson's disease cybrids. *Antioxid Redox Signal* ;**11**:439-48;2009
- [145] Lucking C.B., Durr A., Bonifati V., Vaughan J., De M.G., Gasser T. et al. Association between early-onset Parkinson's disease and mutations in the parkin gene. *N Engl J Med* ;**342**:1560-7;2000
- [146] Bonifati V., Rizzu P., van Baren M.J., Schaap O., Breedveld G.J., Krieger E. et al. Mutations in the DJ-1 gene associated with autosomal recessive early-onset parkinsonism. *Science* ;**299**:256-9;2003
- [147] Valente E.M., Abou-Sleiman P.M., Caputo V., Muqit M.M., Harvey K., Gispert S. et al. Hereditary early-onset Parkinson's disease caused by mutations in PINK1. *Science* ;**304**:1158-60;2004
- [148] Henchcliffe C., Beal M.F. Mitochondrial biology and oxidative stress in Parkinson disease pathogenesis. *Nat Clin Pract Neurol* ;**4**:600-9;2008
- [149] Kruger R., Kuhn W., Muller T., Woitalla D., Graeber M., Kosel S. et al. Ala30Pro mutation in the gene encoding alpha-synuclein in Parkinson's disease. *Nat Genet* ;**18**:106-8;1998
- [150] Zarranz J.J., Alegre J., Gomez-Esteban J.C., Lezcano E., Ros R., Ampuero I. et al. The new mutation, E46K, of alpha-synuclein causes Parkinson and Lewy body dementia. *Ann Neurol* ;**55**:164-73;2004

- [151] Ueda K., Fukushima H., Masliah E., Xia Y., Iwai A., Yoshimoto M. et al. Molecular cloning of cDNA encoding an unrecognized component of amyloid in Alzheimer disease. *Proc Natl Acad Sci U S A* ;**90**:11282-6;1993
- [152] Giasson B.I., Murray I.V., Trojanowski J.Q., Lee V.M. A hydrophobic stretch of 12 amino acid residues in the middle of alpha-synuclein is essential for filament assembly. *J Biol Chem* ;**276**:2380-6;2001
- [153] Fortin D.L., Troyer M.D., Nakamura K., Kubo S., Anthony M.D., Edwards R.H. Lipid rafts mediate the synaptic localization of alpha-synuclein. *J Neurosci* ;**24**:6715-23;2004
- [154] Eliezer D., Kutluay E., Bussell R., Jr., Browne G. Conformational properties of alpha-synuclein in its free and lipid-associated states. *J Mol Biol* ;**307**:1061-73;2001
- [155] George J.M., Jin H., Woods W.S., Clayton D.F. Characterization of a novel protein regulated during the critical period for song learning in the zebra finch. *Neuron* ;**15**:361-72;1995
- [156] Abeliovich A., Schmitz Y., Farinas I., Choi-Lundberg D., Ho W.H., Castillo P.E. et al. Mice lacking alpha-synuclein display functional deficits in the nigrostriatal dopamine system. *Neuron* ;**25**:239-52;2000
- [157] Sidhu A., Wersinger C., Vernier P. Does alpha-synuclein modulate dopaminergic synaptic content and tone at the synapse? *FASEB J* ;**18**:637-47;2004
- [158] Sulzer D. Clues to how alpha-synuclein damages neurons in Parkinson's disease. *Mov Disord* ;**25 Suppl 1**:S27-S31;2010
- [159] Norris E.H., Giasson B.I., Hodara R., Xu S., Trojanowski J.Q., Ischiropoulos H. et al. Reversible inhibition of alpha-synuclein fibrillization by dopaminochrome-mediated conformational alterations. *J Biol Chem* ;**280**:21212-9;2005
- [160] Volles M.J., Lee S.J., Rochet J.C., Shtilerman M.D., Ding T.T., Kessler J.C. et al. Vesicle permeabilization by protofibrillar alpha-synuclein: implications for the pathogenesis and treatment of Parkinson's disease. *Biochemistry* ;**40**:7812-9;2001
- [161] Sulzer D. Multiple hit hypotheses for dopamine neuron loss in Parkinson's disease. *Trends Neurosci* ;**30**:244-50;2007
- [162] Bennett M.C., Bishop J.F., Leng Y., Chock P.B., Chase T.N., Mouradian M.M. Degradation of alpha-synuclein by proteasome. *J Biol Chem* ;**274**:33855-8;1999
- [163] Tofaris G.K., Layfield R., Spillantini M.G. alpha-synuclein metabolism and aggregation is linked to ubiquitin-independent degradation by the proteasome. *FEBS Lett* ;**509**:22-6;2001
- [164] Rideout H.J., Larsen K.E., Sulzer D., Stefanis L. Proteasomal inhibition leads to formation of ubiquitin/alpha-synuclein-immunoreactive inclusions in PC12 cells. *J Neurochem* ;**78**:899-908;2001
- [165] Rideout H.J., Stefanis L. Proteasomal inhibition-induced inclusion formation and death in cortical neurons require transcription and ubiquitination. *Mol Cell Neurosci* ;**21**:223-38;2002
- [166] Paxinou E., Chen Q., Weisse M., Giasson B.I., Norris E.H., Rueter S.M. et al. Induction of alpha-synuclein aggregation by intracellular nitrative insult. *J Neurosci* ;**21**:8053-61;2001
- [167] Webb J.L., Ravikumar B., Atkins J., Skepper J.N., Rubinsztein D.C. Alpha-Synuclein is degraded by both autophagy and the proteasome. *J Biol Chem* ;**278**:25009-13;2003

- [168] Lee H.J., Khoshaghideh F., Patel S., Lee S.J. Clearance of alpha-synuclein oligomeric intermediates via the lysosomal degradation pathway. *J Neurosci* ;**24**:1888-96;2004
- [169] Cheung Z.H., Ip N.Y. The emerging role of autophagy in Parkinson's disease. *Mol Brain* ;**2**:29;2009
- [170] Cuervo A.M., Stefanis L., Fredenburg R., Lansbury P.T., Sulzer D. Impaired degradation of mutant alpha-synuclein by chaperone-mediated autophagy. *Science* ;**305**:1292-5;2004
- [171] Petrucelli L., O'Farrell C., Lockhart P.J., Baptista M., Kehoe K., Vink L. et al. Parkin protects against the toxicity associated with mutant alpha-synuclein: proteasome dysfunction selectively affects catecholaminergic neurons. *Neuron* ;**36**:1007-19;2002
- [172] Snyder H., Mensah K., Theisler C., Lee J., Matouschek A., Wolozin B. Aggregated and monomeric alpha-synuclein bind to the S6' proteasomal protein and inhibit proteasomal function. *J Biol Chem* ;**278**:11753-9;2003
- [173] Tanaka Y., Engelender S., Igarashi S., Rao R.K., Wanner T., Tanzi R.E. et al. Inducible expression of mutant alpha-synuclein decreases proteasome activity and increases sensitivity to mitochondria-dependent apoptosis. *Hum Mol Genet* ;**10**:919-26;2001
- [174] Vogiatzi T., Xilouri M., Vekrellis K., Stefanis L. Wild type alpha-synuclein is degraded by chaperone-mediated autophagy and macroautophagy in neuronal cells. *J Biol Chem* ;**283**:23542-56;2008
- [175] Zhang Y., Dawson V.L., Dawson T.M. Oxidative stress and genetics in the pathogenesis of Parkinson's disease. *Neurobiol Dis* ;**7**:240-50;2000
- [176] Hashimoto M., Takeda A., Hsu L.J., Takenouchi T., Masliah E. Role of cytochrome c as a stimulator of alpha-synuclein aggregation in Lewy body disease. *J Biol Chem* ;**274**:28849-52;1999
- [177] Norris E.H., Uryu K., Leight S., Giasson B.I., Trojanowski J.Q., Lee V.M. Pesticide exposure exacerbates alpha-synucleinopathy in an A53T transgenic mouse model. *Am J Pathol* ;**170**:658-66;2007
- [178] Manning-Bog A.B., McCormack A.L., Li J., Uversky V.N., Fink A.L., Di Monte D.A. The herbicide paraquat causes up-regulation and aggregation of alpha-synuclein in mice: paraquat and alpha-synuclein. *J Biol Chem* ;**277**:1641-4;2002
- [179] Dauer W., Kholodilov N., Vila M., Trillat A.C., Goodchild R., Larsen K.E. et al. Resistance of alpha-synuclein null mice to the parkinsonian neurotoxin MPTP. *Proc Natl Acad Sci U S A* ;**99**:14524-9;2002
- [180] Kalivendi S.V., Yedlapudi D., Hillard C.J., Kalyanaraman B. Oxidants induce alternative splicing of alpha-synuclein: Implications for Parkinson's disease. *Free Radic Biol Med* ;**48**:377-83;2010
- [181] Devi L., Raghavendran V., Prabhu B.M., Avadhani N.G., Anandatheerthavarada H.K. Mitochondrial import and accumulation of alpha-synuclein impair complex I in human dopaminergic neuronal cultures and Parkinson disease brain. *J Biol Chem* ;**283**:9089-100;2008
- [182] Cole N.B., Dieuliis D., Leo P., Mitchell D.C., Nussbaum R.L. Mitochondrial translocation of alpha-synuclein is promoted by intracellular acidification. *Exp Cell Res* ;**314**:2076-89;2008
- [183] Shavali S., Brown-Borg H.M., Ebadi M., Porter J. Mitochondrial localization of alpha-synuclein protein in alpha-synuclein overexpressing cells. *Neurosci Lett* ;**439**:125-8;2008

- [184] Parihar M.S., Parihar A., Fujita M., Hashimoto M., Ghafourifar P. Alpha-synuclein overexpression and aggregation exacerbates impairment of mitochondrial functions by augmenting oxidative stress in human neuroblastoma cells. *Int J Biochem Cell Biol* ;**41**:2015-24;2009
- [185] Martin L.J., Pan Y., Price A.C., Sterling W., Copeland N.G., Jenkins N.A. et al. Parkinson's disease alpha-synuclein transgenic mice develop neuronal mitochondrial degeneration and cell death. *J Neurosci* ;**26**:41-50;2006
- [186] Parihar M.S., Parihar A., Fujita M., Hashimoto M., Ghafourifar P. Mitochondrial association of alpha-synuclein causes oxidative stress. *Cell Mol Life Sci* ;**65**:1272-84;2008
- [187] Buttner S., Bitto A., Ring J., Augsten M., Zabrocki P., Eisenberg T. et al. Functional mitochondria are required for alpha-synuclein toxicity in aging yeast. *J Biol Chem* ;**283**:7554-60;2008
- [188] Anderson J.P., Walker D.E., Goldstein J.M., de L.R., Banducci K., Caccavello R.J. et al. Phosphorylation of Ser-129 is the dominant pathological modification of alpha-synuclein in familial and sporadic Lewy body disease. *J Biol Chem* ;**281**:29739-52;2006
- [189] Baba M., Nakajo S., Tu P.H., Tomita T., Nakaya K., Lee V.M. et al. Aggregation of alpha-synuclein in Lewy bodies of sporadic Parkinson's disease and dementia with Lewy bodies. *Am J Pathol* ;**152**:879-84;1998
- [190] Fujiwara H., Hasegawa M., Dohmae N., Kawashima A., Masliah E., Goldberg M.S. et al. alpha-Synuclein is phosphorylated in synucleinopathy lesions. *Nat Cell Biol* ;**4**:160-4;2002
- [191] Giasson B.I., Duda J.E., Murray I.V., Chen Q., Souza J.M., Hurtig H.I. et al. Oxidative damage linked to neurodegeneration by selective alpha-synuclein nitration in synucleinopathy lesions. *Science* ;**290**:985-9;2000
- [192] Hasegawa M., Fujiwara H., Nonaka T., Wakabayashi K., Takahashi H., Lee V.M. et al. Phosphorylated alpha-synuclein is ubiquitinated in alpha-synucleinopathy lesions. *J Biol Chem* ;**277**:49071-6;2002
- [193] Tofaris G.K., Razaq A., Ghetti B., Lilley K.S., Spillantini M.G. Ubiquitination of alpha-synuclein in Lewy bodies is a pathological event not associated with impairment of proteasome function. *J Biol Chem* ;**278**:44405-11;2003
- [194] Healy D.G., Falchi M., O'Sullivan S.S., Bonifati V., Durr A., Bressman S. et al. Phenotype, genotype, and worldwide genetic penetrance of LRRK2-associated Parkinson's disease: a case-control study. *Lancet Neurol* ;**7**:583-90;2008
- [195] Mata I.F., Wedemeyer W.J., Farrer M.J., Taylor J.P., Gallo K.A. LRRK2 in Parkinson's disease: protein domains and functional insights. *Trends Neurosci* ;**29**:286-93;2006
- [196] Bosgraaf L., Van Haastert P.J. Roc, a Ras/GTPase domain in complex proteins. *Biochim Biophys Acta* ;**1643**:5-10;2003
- [197] Greggio E., Zambrano I., Kaganovich A., Beilina A., Taymans J.M., Daniels V. et al. The Parkinson disease-associated leucine-rich repeat kinase 2 (LRRK2) is a dimer that undergoes intramolecular autophosphorylation. *J Biol Chem* ;**283**:16906-14;2008
- [198] Imai Y., Gehrke S., Wang H.Q., Takahashi R., Hasegawa K., Oota E. et al. Phosphorylation of 4E-BP by LRRK2 affects the maintenance of dopaminergic neurons in Drosophila. *EMBO J* ;**27**:2432-43;2008



- [199] Jaleel M., Nichols R.J., Deak M., Campbell D.G., Gillardon F., Knebel A. et al. LRRK2 phosphorylates moesin at threonine-558: characterization of how Parkinson's disease mutants affect kinase activity. *Biochem J* ;**405**:307-17;2007
- [200] West A.B., Moore D.J., Biskup S., Bugayenko A., Smith W.W., Ross C.A. et al. Parkinson's disease-associated mutations in leucine-rich repeat kinase 2 augment kinase activity. *Proc Natl Acad Sci U S A* ;**102**:16842-7;2005
- [201] Guo L., Gandhi P.N., Wang W., Petersen R.B., Wilson-Delfosse A.L., Chen S.G. The Parkinson's disease-associated protein, leucine-rich repeat kinase 2 (LRRK2), is an authentic GTPase that stimulates kinase activity. *Exp Cell Res* ;**313**:3658-70;2007
- [202] Ito G., Okai T., Fujino G., Takeda K., Ichijo H., Katada T. et al. GTP binding is essential to the protein kinase activity of LRRK2, a causative gene product for familial Parkinson's disease. *Biochemistry* ;**46**:1380-8;2007
- [203] Burbulla L.F., Kruger R. Converging environmental and genetic pathways in the pathogenesis of Parkinson's disease. *J Neurol Sci* ;**306**:1-8;2011
- [204] Smith W.W., Pei Z., Jiang H., Dawson V.L., Dawson T.M., Ross C.A. Kinase activity of mutant LRRK2 mediates neuronal toxicity. *Nat Neurosci* ;**9**:1231-3;2006
- [205] Di F.A., Rohe C.F., Ferreira J., Chien H.F., Vacca L., Stocchi F. et al. A frequent LRRK2 gene mutation associated with autosomal dominant Parkinson's disease. *Lancet* ;**365**:412-5;2005
- [206] Gilks W.P., Abou-Sleiman P.M., Gandhi S., Jain S., Singleton A., Lees A.J. et al. A common LRRK2 mutation in idiopathic Parkinson's disease. *Lancet* ;**365**:415-6;2005
- [207] Nichols W.C., Pankratz N., Hernandez D., Paisan-Ruiz C., Jain S., Halter C.A. et al. Genetic screening for a single common LRRK2 mutation in familial Parkinson's disease. *Lancet* ;**365**:410-2;2005
- [208] Giasson B.I., Covy J.P., Bonini N.M., Hurtig H.I., Farrer M.J., Trojanowski J.Q. et al. Biochemical and pathological characterization of Lrrk2. *Ann Neurol* ;**59**:315-22;2006
- [209] Ross O.A., Toft M., Whittle A.J., Johnson J.L., Papapetropoulos S., Mash D.C. et al. Lrrk2 and Lewy body disease. *Ann Neurol* ;**59**:388-93;2006
- [210] Tong Y., Yamaguchi H., Giaime E., Boyle S., Kopan R., Kelleher R.J., III et al. Loss of leucine-rich repeat kinase 2 causes impairment of protein degradation pathways, accumulation of alpha-synuclein, and apoptotic cell death in aged mice. *Proc Natl Acad Sci U S A* ;**107**:9879-84;2010
- [211] Mortiboys H., Johansen K.K., Aasly J.O., Bandmann O. Mitochondrial impairment in patients with Parkinson disease with the G2019S mutation in LRRK2. *Neurology* ;**75**:2017-20;2010
- [212] Nguyen H.N., Byers B., Cord B., Shcheglovitov A., Byrne J., Gujar P. et al. LRRK2 mutant iPSC-derived DA neurons demonstrate increased susceptibility to oxidative stress. *Cell Stem Cell* ;**8**:267-80;2011
- [213] Criscuolo C., Volpe G., De R.A., Varrone A., Marongiu R., Mancini P. et al. PINK1 homozygous W437X mutation in a patient with apparent dominant transmission of parkinsonism. *Mov Disord* ;**21**:1265-7;2006
- [214] Lucking C.B., Bonifati V., Periquet M., Vanacore N., Brice A., Meco G. Pseudo-dominant inheritance and exon 2 triplication in a family with parkin gene mutations. *Neurology* ;**57**:924-7;2001

- [215] Maruyama M., Ikeuchi T., Saito M., Ishikawa A., Yuasa T., Tanaka H. et al. Novel mutations, pseudo-dominant inheritance, and possible familial affects in patients with autosomal recessive juvenile parkinsonism. *Ann Neurol* ;**48**:245-50;2000
- [216] Lucking C.B., Chesneau V., Lohmann E., Verpillat P., Dulac C., Bonnet A.M. et al. Coding polymorphisms in the parkin gene and susceptibility to Parkinson disease. *Arch Neurol* ;**60**:1253-6;2003
- [217] Periquet M., Latouche M., Lohmann E., Rawal N., De M.G., Ricard S. et al. Parkin mutations are frequent in patients with isolated early-onset parkinsonism. *Brain* ;**126**:1271-8;2003
- [218] Takahashi H., Ohama E., Suzuki S., Horikawa Y., Ishikawa A., Morita T. et al. Familial juvenile parkinsonism: clinical and pathologic study in a family. *Neurology* ;**44**:437-41;1994
- [219] Farrer M., Chan P., Chen R., Tan L., Lincoln S., Hernandez D. et al. Lewy bodies and parkinsonism in families with parkin mutations. *Ann Neurol* ;**50**:293-300;2001
- [220] Moore D.J. Parkin: a multifaceted ubiquitin ligase. *Biochem Soc Trans* ;**34**:749-53;2006
- [221] Shimura H., Schlossmacher M.G., Hattori N., Frosch M.P., Trockenbacher A., Schneider R. et al. Ubiquitination of a new form of alpha-synuclein by parkin from human brain: implications for Parkinson's disease. *Science* ;**293**:263-9;2001
- [222] Corti O., Hampe C., Koutnikova H., Darios F., Jacquier S., Prigent A. et al. The p38 subunit of the aminoacyl-tRNA synthetase complex is a Parkin substrate: linking protein biosynthesis and neurodegeneration. *Hum Mol Genet* ;**12**:1427-37;2003
- [223] von C.R., Dawson V.L., Dawson T.M. Parkin-associated Parkinson's disease. *Cell Tissue Res* ;**318**:175-84;2004
- [224] Shimura H., Hattori N., Kubo S., Mizuno Y., Asakawa S., Minoshima S. et al. Familial Parkinson disease gene product, parkin, is a ubiquitin-protein ligase. *Nat Genet* ;**25**:302-5;2000
- [225] Kubo S.I., Kitami T., Noda S., Shimura H., Uchiyama Y., Asakawa S. et al. Parkin is associated with cellular vesicles. *J Neurochem* ;**78**:42-54;2001
- [226] Mouatt-Prigent A., Muriel M.P., Gu W.J., El Hachimi K.H., Lucking C.B., Brice A. et al. Ultrastructural localization of parkin in the rat brainstem, thalamus and basal ganglia. *J Neural Transm* ;**111**:1209-18;2004
- [227] Darios F., Corti O., Lucking C.B., Hampe C., Muriel M.P., Abbas N. et al. Parkin prevents mitochondrial swelling and cytochrome c release in mitochondria-dependent cell death. *Hum Mol Genet* ;**12**:517-26;2003
- [228] Cookson M.R., Lockhart P.J., McLendon C., O'Farrell C., Schlossmacher M., Farrer M.J. RING finger 1 mutations in Parkin produce altered localization of the protein. *Hum Mol Genet* ;**12**:2957-65;2003
- [229] Gu W.J., Corti O., Araujo F., Hampe C., Jacquier S., Lucking C.B. et al. The C289G and C418R missense mutations cause rapid sequestration of human Parkin into insoluble aggregates. *Neurobiol Dis* ;**14**:357-64;2003
- [230] Wang C., Tan J.M., Ho M.W., Zaiden N., Wong S.H., Chew C.L. et al. Alterations in the solubility and intracellular localization of parkin by several familial Parkinson's disease-linked point mutations. *J Neurochem* ;**93**:422-31;2005

- [231] Kuroda Y., Mitsui T., Kunishige M., Shono M., Akaike M., Azuma H. et al. Parkin enhances mitochondrial biogenesis in proliferating cells. *Hum Mol Genet* ;**15**:883-95;2006
- [232] Palacino J.J., Sagi D., Goldberg M.S., Krauss S., Motz C., Wacker M. et al. Mitochondrial dysfunction and oxidative damage in parkin-deficient mice. *J Biol Chem* ;**279**:18614-22;2004
- [233] Stichel C.C., Zhu X.R., Bader V., Linnartz B., Schmidt S., Lubbert H. Mono- and double-mutant mouse models of Parkinson's disease display severe mitochondrial damage. *Hum Mol Genet* ;**16**:2377-93;2007
- [234] Greene J.C., Whitworth A.J., Kuo I., Andrews L.A., Feany M.B., Pallanck L.J. Mitochondrial pathology and apoptotic muscle degeneration in *Drosophila* parkin mutants. *Proc Natl Acad Sci U S A* ;**100**:4078-83;2003
- [235] Pesah Y., Pham T., Burgess H., Middlebrooks B., Verstreken P., Zhou Y. et al. *Drosophila* parkin mutants have decreased mass and cell size and increased sensitivity to oxygen radical stress. *Development* ;**131**:2183-94;2004
- [236] Machida Y., Chiba T., Takayanagi A., Tanaka Y., Asanuma M., Ogawa N. et al. Common anti-apoptotic roles of parkin and alpha-synuclein in human dopaminergic cells. *Biochem Biophys Res Commun* ;**332**:233-40;2005
- [237] Rothfuss O., Fischer H., Hasegawa T., Maisel M., Leitner P., Miesel F. et al. Parkin protects mitochondrial genome integrity and supports mitochondrial DNA repair. *Hum Mol Genet* ;**18**:3832-50;2009
- [238] Valente E.M., Bentivoglio A.R., Dixon P.H., Ferraris A., Ialongo T., Frontali M. et al. Localization of a novel locus for autosomal recessive early-onset parkinsonism, PARK6, on human chromosome 1p35-p36. *Am J Hum Genet* ;**68**:895-900;2001
- [239] Bonifati V., Rohe C.F., Breedveld G.J., Fabrizio E., De M.M., Tassorelli C. et al. Early-onset parkinsonism associated with PINK1 mutations: frequency, genotypes, and phenotypes. *Neurology* ;**65**:87-95;2005
- [240] Tan E.K., Yew K., Chua E., Puvan K., Shen H., Lee E. et al. PINK1 mutations in sporadic early-onset Parkinson's disease. *Mov Disord* ;**21**:789-93;2006
- [241] Hatano Y., Sato K., Elibol B., Yoshino H., Yamamura Y., Bonifati V. et al. PARK6-linked autosomal recessive early-onset parkinsonism in Asian populations. *Neurology* ;**63**:1482-5;2004
- [242] Gandhi S., Muqit M.M., Stanyer L., Healy D.G., Abou-Sleiman P.M., Hargreaves I. et al. PINK1 protein in normal human brain and Parkinson's disease. *Brain* ;**129**:1720-31;2006
- [243] Exner N., Treske B., Paquet D., Holmstrom K., Schiesling C., Gispert S. et al. Loss-of-function of human PINK1 results in mitochondrial pathology and can be rescued by parkin. *J Neurosci* ;**27**:12413-8;2007
- [244] Atsumi M., Li Y., Tomiyama H., Sato K., Hattori N. [A 62-year-old woman with early-onset Parkinson's disease associated with the PINK1 gene deletion]. *Rinsho Shinkeigaku* ;**46**:199-202;2006
- [245] Valente E.M., Salvi S., Ialongo T., Marongiu R., Elia A.E., Caputo V. et al. PINK1 mutations are associated with sporadic early-onset parkinsonism. *Ann Neurol* ;**56**:336-41;2004

- [246] Hoepken H.H., Gispert S., Morales B., Wingerter O., Del T.D., Mulsch A. et al. Mitochondrial dysfunction, peroxidation damage and changes in glutathione metabolism in PARK6. *Neurobiol Dis* ;**25**:401-11;2007
- [247] Clark I.E., Dodson M.W., Jiang C., Cao J.H., Huh J.R., Seol J.H. et al. Drosophila pink1 is required for mitochondrial function and interacts genetically with parkin. *Nature* ;**441**:1162-6;2006
- [248] Petit A., Kawarai T., Paitel E., Sanjo N., Maj M., Scheid M. et al. Wild-type PINK1 prevents basal and induced neuronal apoptosis, a protective effect abrogated by Parkinson disease-related mutations. *J Biol Chem* ;**280**:34025-32;2005
- [249] Wood-Kaczmar A., Gandhi S., Yao Z., Abramov A.Y., Miljan E.A., Keen G. et al. PINK1 is necessary for long term survival and mitochondrial function in human dopaminergic neurons. *PLoS One* ;**3**:e2455;2008
- [250] Park J., Lee S.B., Lee S., Kim Y., Song S., Kim S. et al. Mitochondrial dysfunction in Drosophila PINK1 mutants is complemented by parkin. *Nature* ;**441**:1157-61;2006
- [251] Yang Y., Gehrke S., Imai Y., Huang Z., Ouyang Y., Wang J.W. et al. Mitochondrial pathology and muscle and dopaminergic neuron degeneration caused by inactivation of Drosophila Pink1 is rescued by Parkin. *Proc Natl Acad Sci U S A* ;**103**:10793-8;2006
- [252] Goldman S.J., Taylor R., Zhang Y., Jin S. Autophagy and the degradation of mitochondria. *Mitochondrion* ;**10**:309-15;2010
- [253] Kim I., Rodriguez-Enriquez S., Lemasters J.J. Selective degradation of mitochondria by mitophagy. *Arch Biochem Biophys* ;**462**:245-53;2007
- [254] Narendra D., Tanaka A., Suen D.F., Youle R.J. Parkin is recruited selectively to impaired mitochondria and promotes their autophagy. *J Cell Biol* ;**183**:795-803;2008
- [255] Narendra D.P., Jin S.M., Tanaka A., Suen D.F., Gautier C.A., Shen J. et al. PINK1 is selectively stabilized on impaired mitochondria to activate Parkin. *PLoS Biol* ;**8**:e1000298;2010
- [256] Matsuda N., Sato S., Shiba K., Okatsu K., Saisho K., Gautier C.A. et al. PINK1 stabilized by mitochondrial depolarization recruits Parkin to damaged mitochondria and activates latent Parkin for mitophagy. *J Cell Biol* ;**189**:211-21;2010
- [257] Ruan Q., Harrington A.J., Caldwell K.A., Caldwell G.A., Standaert D.G. VPS41, a protein involved in lysosomal trafficking, is protective in *Caenorhabditis elegans* and mammalian cellular models of Parkinson's disease. *Neurobiol Dis* ;**37**:330-8;2010
- [258] Deng H., Dodson M.W., Huang H., Guo M. The Parkinson's disease genes pink1 and parkin promote mitochondrial fission and/or inhibit fusion in Drosophila. *Proc Natl Acad Sci U S A* ;**105**:14503-8;2008
- [259] Poole A.C., Thomas R.E., Andrews L.A., McBride H.M., Whitworth A.J., Pallanck L.J. The PINK1/Parkin pathway regulates mitochondrial morphology. *Proc Natl Acad Sci U S A* ;**105**:1638-43;2008
- [260] Grunewald A., Gegg M.E., Taanman J.W., King R.H., Kock N., Klein C. et al. Differential effects of PINK1 nonsense and missense mutations on mitochondrial function and morphology. *Exp Neurol* ;**219**:266-73;2009

- [261] Mortiboys H., Thomas K.J., Koopman W.J., Klaffke S., Abou-Sleiman P., Olpin S. et al. Mitochondrial function and morphology are impaired in parkin-mutant fibroblasts. *Ann Neurol* ;**64**:555-65;2008
- [262] Piccoli C., Sardanelli A., Scrima R., Ripoli M., Quarato G., D'Aprile A. et al. Mitochondrial respiratory dysfunction in familial parkinsonism associated with PINK1 mutation. *Neurochem Res* ;**33**:2565-74;2008
- [263] Moore D.J., Zhang L., Dawson T.M., Dawson V.L. A missense mutation (L166P) in DJ-1, linked to familial Parkinson's disease, confers reduced protein stability and impairs homo-oligomerization. *J Neurochem* ;**87**:1558-67;2003
- [264] Zhang L., Shimoji M., Thomas B., Moore D.J., Yu S.W., Marupudi N.I. et al. Mitochondrial localization of the Parkinson's disease related protein DJ-1: implications for pathogenesis. *Hum Mol Genet* ;**14**:2063-73;2005
- [265] Nagakubo D., Taira T., Kitaura H., Ikeda M., Tamai K., Iguchi-Arigo S.M. et al. DJ-1, a novel oncogene which transforms mouse NIH3T3 cells in cooperation with ras. *Biochem Biophys Res Commun* ;**231**:509-13;1997
- [266] Abou-Sleiman P.M., Healy D.G., Quinn N., Lees A.J., Wood N.W. The role of pathogenic DJ-1 mutations in Parkinson's disease. *Ann Neurol* ;**54**:283-6;2003
- [267] Canet-Aviles R.M., Wilson M.A., Miller D.W., Ahmad R., McLendon C., Bandyopadhyay S. et al. The Parkinson's disease protein DJ-1 is neuroprotective due to cysteine-sulfenic acid-driven mitochondrial localization. *Proc Natl Acad Sci U S A* ;**101**:9103-8;2004
- [268] Moore D.J., Zhang L., Troncoso J., Lee M.K., Hattori N., Mizuno Y. et al. Association of DJ-1 and parkin mediated by pathogenic DJ-1 mutations and oxidative stress. *Hum Mol Genet* ;**14**:71-84;2005
- [269] Bonifati V., Rizzu P., Squitieri F., Krieger E., Vanacore N., van Swieten J.C. et al. DJ-1( PARK7), a novel gene for autosomal recessive, early onset parkinsonism. *Neurol Sci* ;**24**:159-60;2003
- [270] Taira T., Saito Y., Niki T., Iguchi-Arigo S.M., Takahashi K., Ariga H. DJ-1 has a role in antioxidative stress to prevent cell death. *EMBO Rep* ;**5**:213-8;2004
- [271] Hering R., Strauss K.M., Tao X., Bauer A., Voitalla D., Mietz E.M. et al. Novel homozygous p.E64D mutation in DJ1 in early onset Parkinson disease (PARK7). *Hum Mutat* ;**24**:321-9;2004
- [272] Lev N., Ickowicz D., Melamed E., Offen D. Oxidative insults induce DJ-1 upregulation and redistribution: implications for neuroprotection. *Neurotoxicology* ;**29**:397-405;2008
- [273] Meulener M., Whitworth A.J., Armstrong-Gold C.E., Rizzu P., Heutink P., Wes P.D. et al. Drosophila DJ-1 mutants are selectively sensitive to environmental toxins associated with Parkinson's disease. *Curr Biol* ;**15**:1572-7;2005
- [274] Park J., Kim S.Y., Cha G.H., Lee S.B., Kim S., Chung J. Drosophila DJ-1 mutants show oxidative stress-sensitive locomotive dysfunction. *Gene* ;**361**:133-9;2005
- [275] Meulener M.C., Xu K., Thomson L., Ischiropoulos H., Bonini N.M. Mutational analysis of DJ-1 in Drosophila implicates functional inactivation by oxidative damage and aging. *Proc Natl Acad Sci U S A* ;**103**:12517-22;2006
- [276] Kim R.H., Smith P.D., Aleyasin H., Hayley S., Mount M.P., Pownall S. et al. Hypersensitivity of DJ-1-deficient mice to 1-methyl-4-phenyl-1,2,3,6-tetrahydropyridine (MPTP) and oxidative stress. *Proc Natl Acad Sci U S A* ;**102**:5215-20;2005

- [277] Martinat C., Shendelman S., Jonason A., Leete T., Beal M.F., Yang L. et al. Sensitivity to oxidative stress in DJ-1-deficient dopamine neurons: an ES- derived cell model of primary Parkinsonism. *PLoS Biol* ;**2**:e327;2004
- [278] Shendelman S., Jonason A., Martinat C., Leete T., Abeliovich A. DJ-1 is a redox-dependent molecular chaperone that inhibits alpha-synuclein aggregate formation. *PLoS Biol* ;**2**:e362;2004
- [279] Yang W., Chen L., Ding Y., Zhuang X., Kang U.J. Paraquat induces dopaminergic dysfunction and proteasome impairment in DJ-1-deficient mice. *Hum Mol Genet* ;**16**:2900-10;2007
- [280] Im J.Y., Lee K.W., Junn E., Mouradian M.M. DJ-1 protects against oxidative damage by regulating the thioredoxin/ASK1 complex. *Neurosci Res* ;**67**:203-8;2010
- [281] Hayashi T., Ishimori C., Takahashi-Niki K., Taira T., Kim Y.C., Maita H. et al. DJ-1 binds to mitochondrial complex I and maintains its activity. *Biochem Biophys Res Commun* ;**390**:667-72;2009
- [282] Kriebiel G., Ruckerbauer S., Burbulla L.F., Kieper N., Maurer B., Waak J. et al. Reduced basal autophagy and impaired mitochondrial dynamics due to loss of Parkinson's disease-associated protein DJ-1. *PLoS One* ;**5**:e9367;2010
- [283] Cunha-Oliveira T., Rego A.C., Oliveira C.R. Cellular and molecular mechanisms involved in the neurotoxicity of opioid and psychostimulant drugs. *Brain Res Rev* ;**58**:192-208;2008
- [284] San Luciano M., Saunders-Pullman R. Substance abuse and movement disorders. *Curr Drug Abuse Rev* ;**2**:273-8;2009
- [285] Brust J.C. Substance abuse and movement disorders. *Mov Disord* ;**25**:2010-20;2010
- [286] Sulzer D. How addictive drugs disrupt presynaptic dopamine neurotransmission. *Neuron* ;**69**:628-49;2011
- [287] Carvalho M., Carmo H., Costa V.M., Capela J.P., Pontes H., Remiao F. et al. Toxicity of amphetamines: an update. *Arch Toxicol* ;2012
- [288] Sitte H.H., Huck S., Reither H., Boehm S., Singer E.A., Pifl C. Carrier-mediated release, transport rates, and charge transfer induced by amphetamine, tyramine, and dopamine in mammalian cells transfected with the human dopamine transporter. *J Neurochem* ;**71**:1289-97;1998
- [289] Jones S.R., Joseph J.D., Barak L.S., Caron M.G., Wightman R.M. Dopamine neuronal transport kinetics and effects of amphetamine. *J Neurochem* ;**73**:2406-14;1999
- [290] Sulzer D., Chen T.K., Lau Y.Y., Kristensen H., Rayport S., Ewing A. Amphetamine redistributes dopamine from synaptic vesicles to the cytosol and promotes reverse transport. *J Neurosci* ;**15**:4102-8;1995
- [291] Kahlig K.M., Binda F., Khoshbouei H., Blakely R.D., McMahon D.G., Javitch J.A. et al. Amphetamine induces dopamine efflux through a dopamine transporter channel. *Proc Natl Acad Sci U S A* ;**102**:3495-500;2005
- [292] Sulzer D., Sonders M.S., Poulsen N.W., Galli A. Mechanisms of neurotransmitter release by amphetamines: a review. *Prog Neurobiol* ;**75**:406-33;2005
- [293] Ramsay R.R., Hunter D.J. Inhibitors alter the spectrum and redox properties of monoamine oxidase A. *Biochim Biophys Acta* ;**1601**:178-84;2002

- [294] Ellison G., Eison M.S., Huberman H.S., Daniel F. Long-term changes in dopaminergic innervation of caudate nucleus after continuous amphetamine administration. *Science* ;**201**:276-8;1978
- [295] Cunha-Oliveira T., Rego A.C., Morgadinho M.T., Macedo T., Oliveira C.R. Differential cytotoxic responses of PC12 cells chronically exposed to psychostimulants or to hydrogen peroxide. *Toxicology* ;**217**:54-62;2006
- [296] Guilarte T.R. Is methamphetamine abuse a risk factor in parkinsonism? *Neurotoxicology* ;**22**:725-31;2001
- [297] Kobayashi H., Ide S., Hasegawa J., Ujike H., Sekine Y., Ozaki N. et al. Study of association between alpha-synuclein gene polymorphism and methamphetamine psychosis/dependence. *Ann N Y Acad Sci* ;**1025**:325-34;2004
- [298] Fornai F., Lenzi P., Gesi M., Ferrucci M., Lazzeri G., Capobianco L. et al. Similarities between methamphetamine toxicity and proteasome inhibition. *Ann N Y Acad Sci* ;**1025**:162-70;2004
- [299] Iacovelli L., Fulceri F., De B.A., Nicoletti F., Ruggieri S., Fornai F. The neurotoxicity of amphetamines: bridging drugs of abuse and neurodegenerative disorders. *Exp Neurol* ;**201**:24-31;2006
- [300] Sherer T.B., Kim J.H., Betarbet R., Greenamyre J.T. Subcutaneous rotenone exposure causes highly selective dopaminergic degeneration and alpha-synuclein aggregation. *Exp Neurol* ;**179**:9-16;2003
- [301] Fornai F., Schluter O.M., Lenzi P., Gesi M., Ruffoli R., Ferrucci M. et al. Parkinson-like syndrome induced by continuous MPTP infusion: convergent roles of the ubiquitin-proteasome system and alpha-synuclein. *Proc Natl Acad Sci U S A* ;**102**:3413-8;2005
- [302] Fornai F., Lenzi P., Ferrucci M., Lazzeri G., di Poggio A.B., Natale G. et al. Occurrence of neuronal inclusions combined with increased nigral expression of alpha-synuclein within dopaminergic neurons following treatment with amphetamine derivatives in mice. *Brain Res Bull* ;**65**:405-13;2005
- [303] Vila M., Vukosavic S., Jackson-Lewis V., Neystat M., Jakowec M., Przedborski S. Alpha-synuclein up-regulation in substantia nigra dopaminergic neurons following administration of the parkinsonian toxin MPTP. *J Neurochem* ;**74**:721-9;2000
- [304] Jung B.D., Shin E.J., Nguyen X.K., Jin C.H., Bach J.H., Park S.J. et al. Potentiation of methamphetamine neurotoxicity by intrastriatal lipopolysaccharide administration. *Neurochem Int* ;**56**:229-44;2010
- [305] Yamamoto B.K., Bankson M.G. Amphetamine neurotoxicity: cause and consequence of oxidative stress. *Crit Rev Neurobiol* ;**17**:87-117;2005
- [306] Cadet J.L., Krasnova I.N., Jayanthi S., Lyles J. Neurotoxicity of substituted amphetamines: molecular and cellular mechanisms. *Neurotox Res* ;**11**:183-202;2007
- [307] Wu C.W., Ping Y.H., Yen J.C., Chang C.Y., Wang S.F., Yeh C.L. et al. Enhanced oxidative stress and aberrant mitochondrial biogenesis in human neuroblastoma SH-SY5Y cells during methamphetamine induced apoptosis. *Toxicol Appl Pharmacol* ;**220**:243-51;2007
- [308] Pubill D., Chipana C., Camins A., Pallas M., Camarasa J., Escubedo E. Free radical production induced by methamphetamine in rat striatal synaptosomes. *Toxicol Appl Pharmacol* ;**204**:57-68;2005

- [309] Frey B.N., Valvassori S.S., Gomes K.M., Martins M.R., Dal-Pizzol F., Kapczinski F. et al. Increased oxidative stress in submitochondrial particles after chronic amphetamine exposure. *Brain Res* ;**1097**:224-9;2006
- [310] Jimenez A., Jorda E.G., Verdaguer E., Pubill D., Sureda F.X., Canudas A.M. et al. Neurotoxicity of amphetamine derivatives is mediated by caspase pathway activation in rat cerebellar granule cells. *Toxicol Appl Pharmacol* ;**196**:223-34;2004
- [311] Mirecki A., Fitzmaurice P., Ang L., Kalasinsky K.S., Peretti F.J., Aiken S.S. et al. Brain antioxidant systems in human methamphetamine users. *J Neurochem* ;**89**:1396-408;2004
- [312] Acikgoz O., Gonenc S., Kayatekin B.M., Pekcetin C., Uysal N., Dayi A. et al. The effects of single dose of methamphetamine on lipid peroxidation levels in the rat striatum and prefrontal cortex. *Eur Neuropsychopharmacol* ;**10**:415-8;2000
- [313] Frey B.N., Valvassori S.S., Reus G.Z., Martins M.R., Petronilho F.C., Bardini K. et al. Changes in Antioxidant Defense Enzymes after D-: amphetamine Exposure: Implications as an Animal Model of Mania. *Neurochem Res* ;**31**:699-703;2006
- [314] Carvalho F., Fernandes E., Remiao F., Gomes-Da-Silva J., Tavares M.A., Bastos M.D. Adaptative response of antioxidant enzymes in different areas of rat brain after repeated d-amphetamine administration. *Addict Biol* ;**6**:213-21;2001
- [315] Fitzmaurice P.S., Tong J., Yazdanpanah M., Liu P.P., Kalasinsky K.S., Kish S.J. Levels of 4-hydroxynonenal and malondialdehyde are increased in brain of human chronic users of methamphetamine. *J Pharmacol Exp Ther* ;**319**:703-9;2006
- [316] Cunha-Oliveira T., Rego A.C., Morgadinho M.T., Macedo T., Oliveira C.R. Differential cytotoxic responses of PC12 cells chronically exposed to psychostimulants or to hydrogen peroxide. *Toxicology* ;**217**:54-62;2006
- [317] El A.A., Zigmond M.J. Low concentrations of methamphetamine can protect dopaminergic cells against a larger oxidative stress injury: mechanistic study. *PLoS One* ;**6**:e24722;2011



## Figure Legends

**Figure 1 – Schematic representation of the alpha-syn protein.** Alpha-syn is a 140 amino acid protein with seven imperfect repeats (KTKEGV) localized in the N-terminal. It has three distinct regions: the amphipathic region in the N-terminal, a central hydrophobic NAC (non amyloid component) domain and an acidic C-terminal region. The three pathogenic missense mutations are represented in red. Numbers above the protein line indicate the limits of each region.

**Figure 2 – Schematic representation of the LRRK2 protein.** LRRK2 is a 2527 amino acid protein, constituted by several conserved domains: ARM (Armadillo), ANK (ankyrin repeat), LRR (leucine-rich repeat), Roc (Ras of complex proteins: GTPase), COR (C-terminal of Roc), kinase domain and WD40. Numbers under and above the protein line indicate the limits of each domain. The single most common mutation occurring in LRRK2, G2019S, is present in the kinase domain of the protein and is represented in red.

### **Figure 3: Mechanisms involved in oxidative stress in familial and sporadic Parkinson's disease (PD).**

**A.** 1) Dopaminergic neurons in the substantia nigra are selectively affected in PD. These neurons contain  $Fe^{2+}$  and neuromelanin, which results from dopamine (DA) oxidation, in a process that generates dopamine quinone (DAQ) and reactive oxygen species (ROS). Neuromelanin may also be protective, since it binds  $Fe^{2+}$ , known to promote the formation of the highly toxic hydroxyl ( $\cdot OH$ ) radical by the Fenton reaction. 2) Familial PD may be caused by duplication/triplication of alpha-synuclein ( $\alpha$ -syn) or by mutations in this and other proteins, such as LRRK2, DJ-1, Parkin and PINK1, which may induce oxidative stress by gain or loss of function. Wild type DJ-1 and Parkin have antioxidant effects that are lost with the pathogenic mutations. 3) A common characteristic of different forms of PD is the occurrence of  $\alpha$ -syn aggregation and the presence of  $\alpha$ -syn-containing Lewy bodies (LB) and Lewy neurites (LN). 4) Impairment of energy metabolism in PD, resulting from mitochondrial dysfunction, may increase glutamate release, exacerbating *N*-methyl-D-aspartate (NMDA) receptor activation. This leads to an increase in intracellular  $Ca^{2+}$ , which activates neuronal nitric oxide ( $\cdot NO$ ) synthase (nNOS), leading to the formation of  $NO\cdot$ , which readily reacts with the superoxide anion ( $O_2^{\cdot -}$ ), forming the highly toxic peroxynitrite ( $ONOO\cdot$ ). **B.** 5) PD phenotype may be recreated by a number of mitochondrial toxins. MPTP is converted into  $MPP^+$  by glial monoamine oxidases (MAO-B) and this metabolite may be transported by the dopamine transporter (DAT) into the DA nerve terminals, where it inhibits mitochondrial electron transport chain (ETC) complex I; 6-hydroxydopamine (6-OHDA) is also taken up by DAT and

may be oxidized in the cytosol leading to DAQ and ROS formation; rotenone is a pesticide that induces PD-similar phenotype by inhibiting mitochondrial complex I. 6) Amphetamine drugs directly affect DAergic nerve terminals, reproducing most of PD molecular hallmarks. Amphetamine (AMPH) is taken up by the DAT and impairs the active transport of DA into synaptic vesicles, leading to an increase in cytosolic DA, which is metabolized by MAO, leading to H<sub>2</sub>O<sub>2</sub> formation, or by autoxidation, with the generation of DAQ, O<sub>2</sub><sup>-</sup> and H<sub>2</sub>O<sub>2</sub>. DAQ may react with  $\alpha$ -syn, stabilizing  $\alpha$ -syn protofibrils and promoting  $\alpha$ -syn aggregation. This may prevent DAQ from producing greater oxidative damage in DAergic neurons. Cytosolic DA may also be released to the extracellular space via reverse-transport by the DAT. AMPH also interferes with DA metabolism, by inhibiting MAO, and with DA synthesis, by inhibiting tyrosine hydroxylase (TH), which can lead to dopamine depletion after prolonged exposure to this drug. AMPH also induces mitochondrial dysfunction involving a loss of mitochondrial potential. 7) Mutant Pink1 may also inhibit mitochondrial complex I.

Manuscript No.: FRBM-D-12-00478

Title: "Revisiting oxidative stress and mitochondrial dysfunction in the pathogenesis of Parkinson's disease - resemblance to the effect of amphetamine drugs of abuse"

Article Type: Special Issue: Neurodegeneration

Corresponding Author: Dr. A. Cristina Rego

All Authors: Rita Perfeito; Teresa Cunha-Oliveira, PhD; A. Cristina Rego, PhD

### Highlights

- Parkinson's disease involves dopamine- and mitochondria-mediated oxidative stress.
- Oxidative stress induced by environmental toxins is linked to sporadic parkinsonism
- Amphetamine neurotoxicity has similarities with Parkinson's disease pathophysiology.

Acc

E46K

A30P

A53T

1

61

96

140

NH<sub>2</sub>

COOH

Amphipatic region

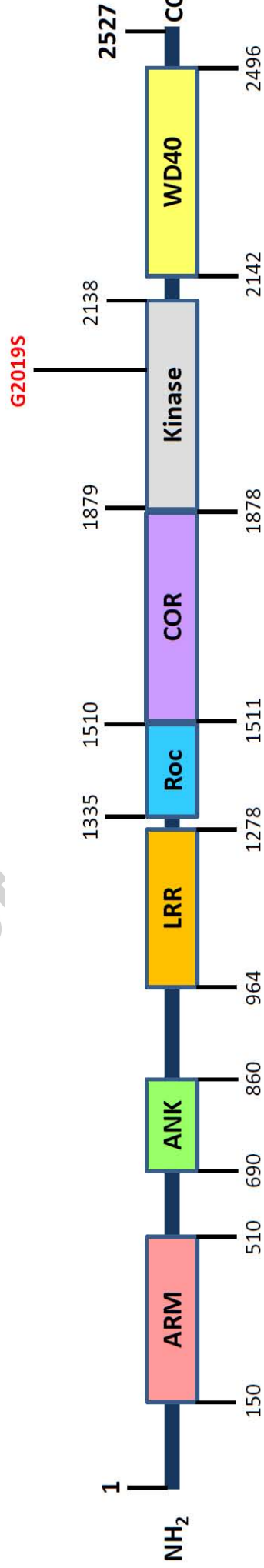
NAC domain

Acidic region

KTKEGV repeats



ript



Accept

Script

